

# USB Station 2

## Quick Installation Guide

## Set up your USB Station 2

1. Connect the power cord.



## Set up your USB Station 2

2. Connect the LAN cable to USB Station 2 and your router.



## Set up your USB Station 2

3. Connect your USB printer or USB storage devices.



## Set up your USB Station 2

4. Insert the Utility CD into your computer.



Note : Synology Assistant will help you locate USB Station 2 in your local area network.

## Find USB Station 2 on Windows

A. Click “Start” then follow the instructions.



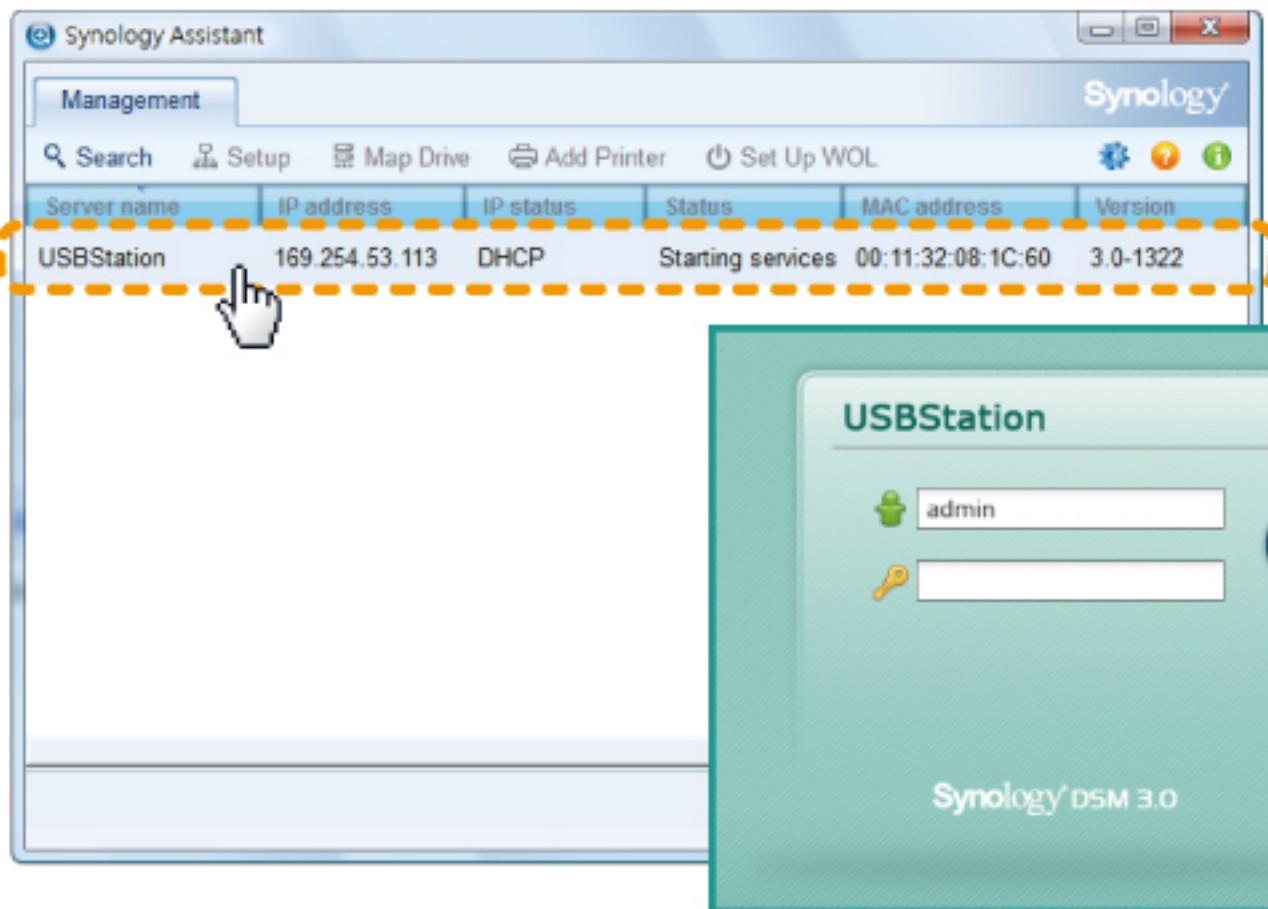


## Find USB Station 2 on Windows

B. Double-click on the entry to log in USB Station 2.

User name : admin

Password : leave blank for this field



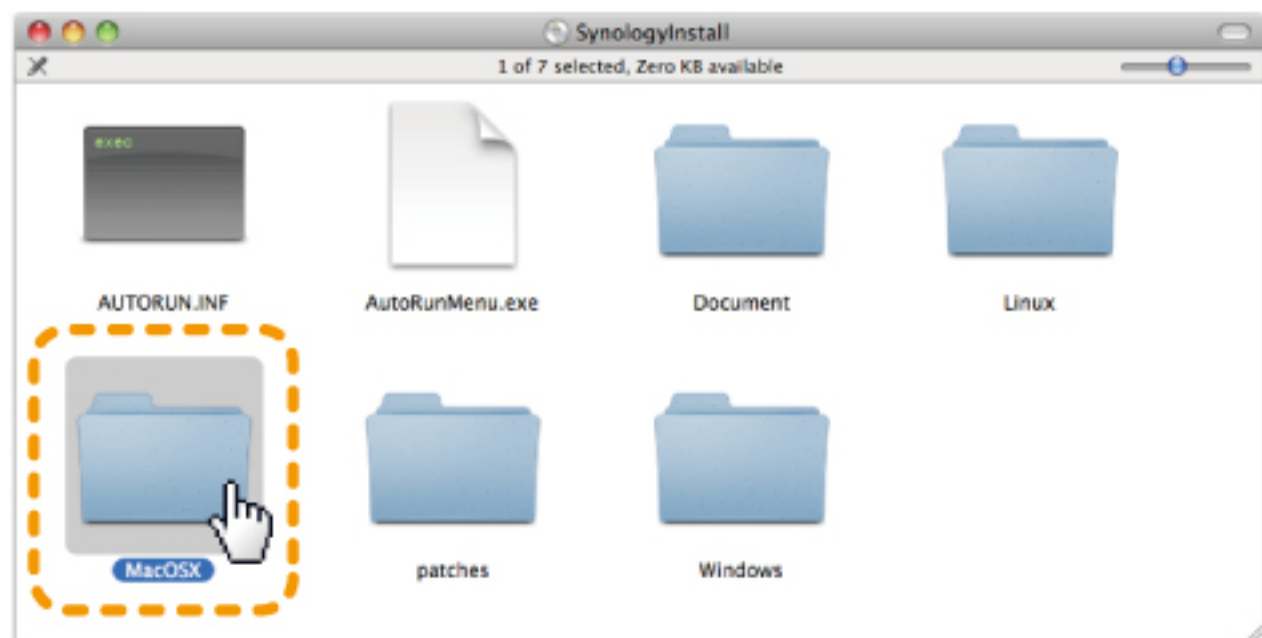
Note : To get more tips on using your USB Station 2, please find the User's Guide on CD.

## Find USB Station 2 on Mac OS X

A. Double-click the SynologyInstall icon on the desktop.



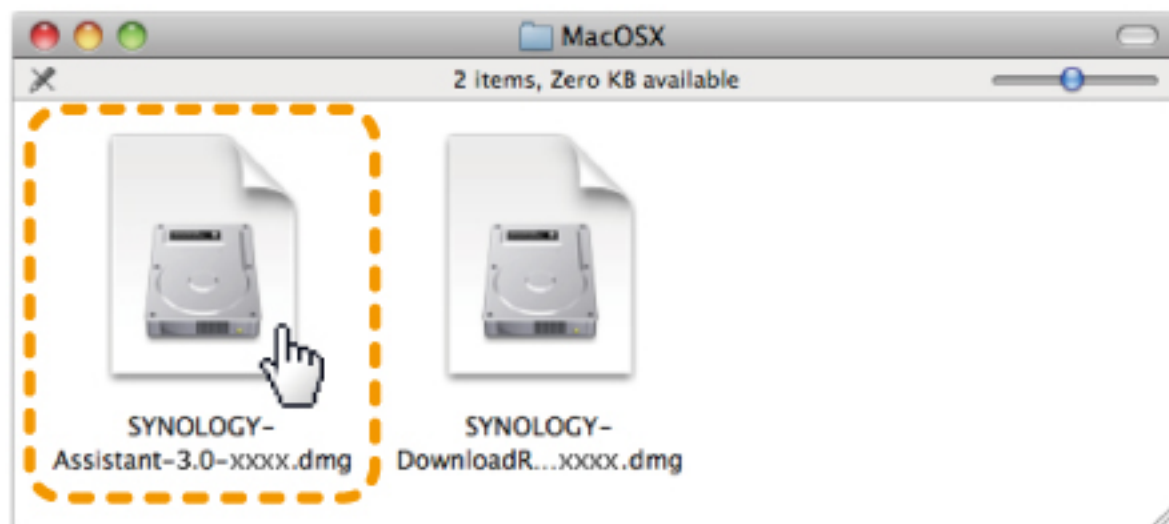
B. Double-click the MacOSX folder.



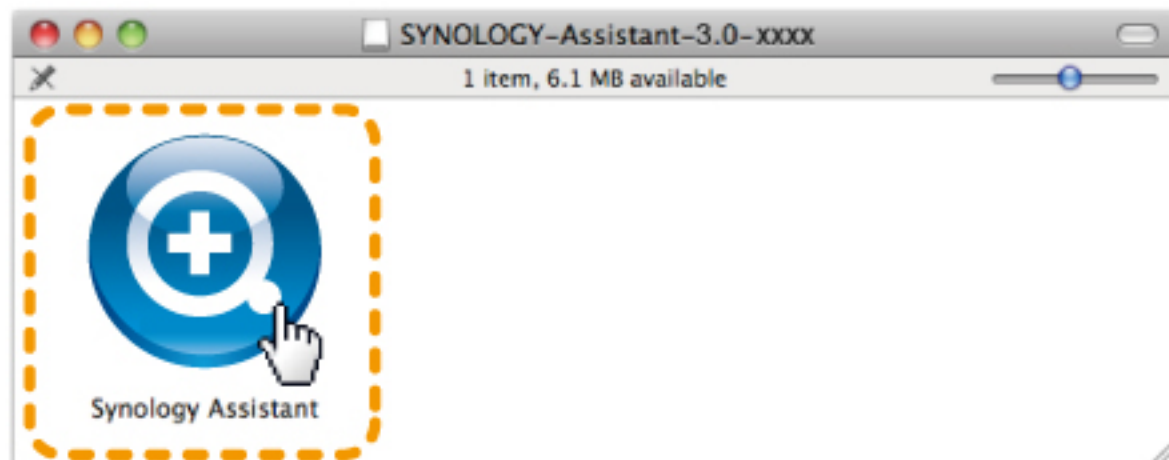


## Find USB Station 2 on Mac OS X

C. Double-click Synology Assistant-3.0-xxxx.dmg.



D. Double-click the Synology Assistant.app.

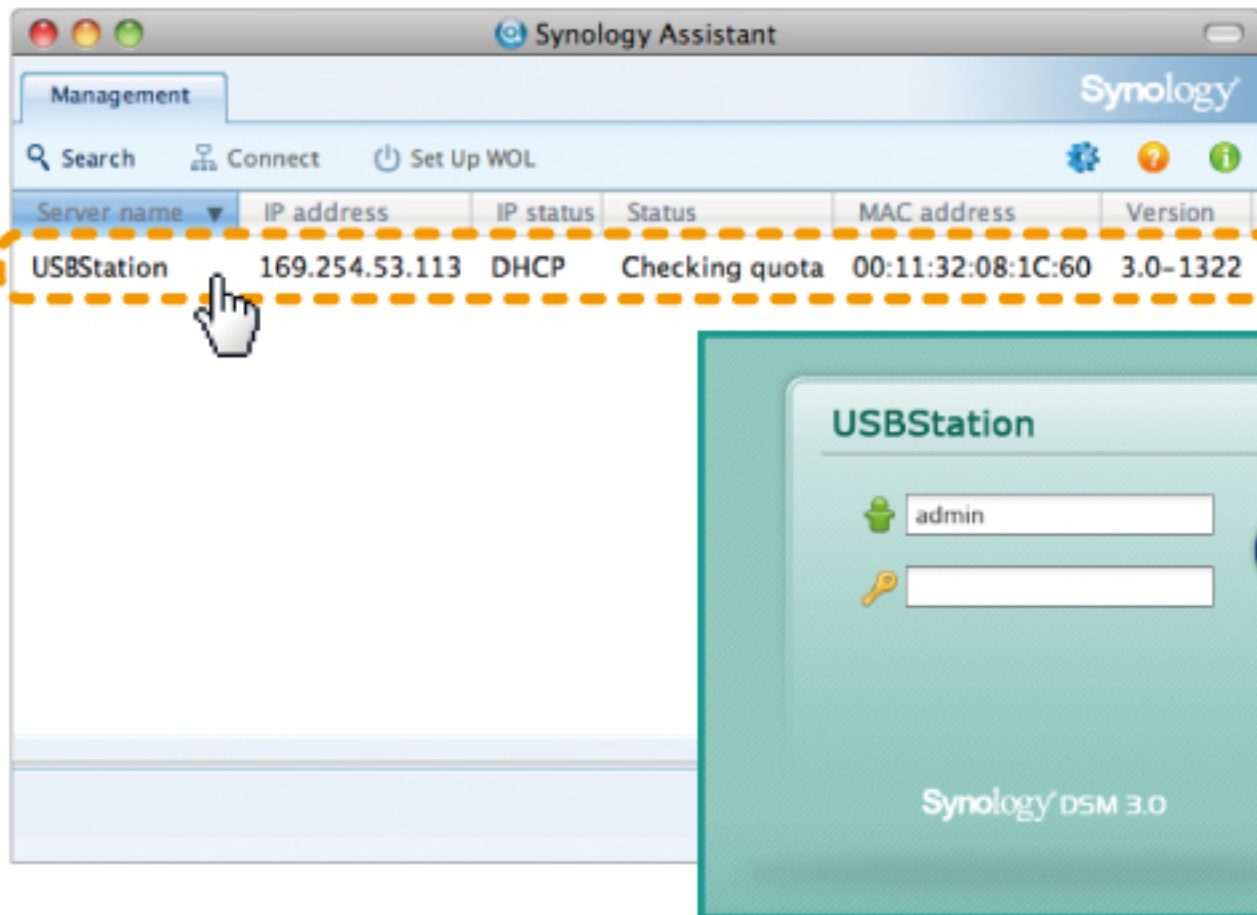


## Find USB Station 2 on Mac OS X

E. Double-click on the entry to log in USB Station 2.

User name: admin

Password: leave blank for this field



The screenshot shows the Synology Assistant application window. The 'Management' tab is active, displaying a table of servers. The table has columns for Server name, IP address, IP status, Status, MAC address, and Version. The entry for 'USBStation' is highlighted with a dashed orange box and a mouse cursor pointing to it. An inset window shows the login screen for 'USBStation' with the username 'admin' and a blank password field.

Server name	IP address	IP status	Status	MAC address	Version
USBStation	169.254.53.113	DHCP	Checking quota	00:11:32:08:1C:60	3.0-1322

USBStation

admin

Synology DSM 3.0

Note : To get more tips on using your USB Station 2, please find the User's Guide on CD.

# Safety Instructions



Keep it away from direct sun light or chemicals.



Clean it with damp paper towels only.



Keep it away from any liquid.



Place it on a stable location.



The power cord must plug into the right supply voltage. Make sure that supplied AC voltage is correct and stable.

[Learn More](#)

---

Congratulations! Your USB Station 2 is ready to use.  
For more information or online resources, please visit [www.synology.com](http://www.synology.com).

---

Synology®  
NEW NAS Experience