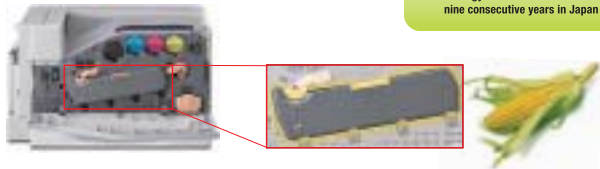


Environmentally-Friendly

The DocuPrint C2255 is manufactured using the Fuji Xerox trend-setting "Biomass-Plastic". The Biomass-Plastic contains a specified minimum quantity of organic resources like plants. And in this case, the organic resource is corn. In addition, these features and practices can be found in the DocuPrint C2255:

- Energy-saving sleep mode of 3W or less
- Lead-free and halogen-free construction
- International Energy Star certified
- Reduced CO₂ emissions of up to 35% in the manufacturing of EA-HG Toner
- Reduced CO₂ emissions of up to 16% in the manufacturing of Biomass-Plastic



4th Eco-Product Awards

DocuPrint C2250
(the Japanese version of DocuPrint C2255)
won the 4th Eco-Products Awards in 2007

The Minister of Economy, Trade and Industry (METI) Prize in the Eco-Products Category

Energy Conservation Prize

Fuji Xerox wins the Energy Conservation Prize for nine consecutive years in Japan

Configurations To Suit You



660 sheets

DocuPrint C2255
Standard Configuration
(560-sheet cassette and 100-sheet bypass tray)*

1,220 sheets

Standard Configuration
+
Single Tray Module
(560-sheet cassette and 100-sheet bypass tray + 560-sheet tray)*

1,220 sheets

Standard Configuration
+
Single Tray Module
+
Cabinet
(560-sheet cassette and 100-sheet bypass tray + 560-sheet tray + Cabinet)*

2,340 sheets

Standard Configuration
+
3 Tray Module
(560-sheet cassette and 100-sheet bypass tray + 560-sheet tray x 3)*

* 64gsm Fuji Xerox paper

THE DOCUMENT COMPANY FUJI XEROX



DocuPrint C2255 A3 Colour Page Printer

THE DOCUMENT COMPANY FUJI XEROX



DocuPrint C2255 A3 Colour Page Printer

| | |
|---|----------|
| Consumables | |
| Black Ink (up to 18,000 pages) ¹ | CT201100 |
| Cyan Ink (up to 12,000 pages) ¹ | CT201101 |
| Magenta Ink (up to 12,000 pages) ¹ | CT201102 |
| Yellow Ink (up to 12,000 pages) ¹ | CT201103 |
| Additional Supplies | |
| Drum Cartridge ² (up to 45,000 pages) | CT350654 |
| Waste Toner Bin ³ | OWA0742 |
| Periodic Replacement Bin | |
| Paper Bin 2255 ⁴ | EL300708 |
| Accessories / Options | |
| Single Tray Module ⁵ | EL300697 |
| 600-sheet x 3 Feeder Unit ⁶ | EL300696 |
| 3 Tray Module ⁷ | EL300698 |
| 900-sheet x 3 Feeder Unit ⁸ | EL300699 |
| Duplex Unit ⁹ | EL300700 |
| Cabinet ¹⁰ | EL300701 |
| Castor Wheel ¹¹ | EL300702 |
| Parallel Port Mini Connector ¹² | EL300703 |
| Hard Disk Unit (HDD or Large) ¹³ | EL300704 |
| Feature Expansion Kit ¹⁴ | EL300710 |
| TC / SD Host ROM ¹⁵ | EL300711 |
| Key Set ROM ¹⁶ | EL300711 |
| Additional Memory | |
| 256MB Memory ¹⁷ | EL300705 |
| 512MB Memory ¹⁸ | EL300706 |
| 1,024MB Memory ¹⁹ | EL300707 |

* A set of 4 drums is required to print CMYK colour
¹ Ink capacity according to ISO 19752. Actual ink capacity may vary depending on print coverage and other factors.
² Drums will be used on the average 100 size of 3 pages (A4, A5, A6, B4, B5, Letter, Legal) per full length, media size, media type and orientation.
³ Cannot be installed simultaneously with Feature Expansion Kit.
⁴ Requires additional 256MB RAM or more.
⁵ Requires hard disk and additional 256MB RAM or more.
For more information or for your nearest authorized Fuji Xerox Printers reseller, visit our website or call:

- Australia**
1300 782 789
- China**
001 10 524 1000
- Hong Kong**
002 2 313 2868
- Indonesia**
021 251 9112
- Korea**
002 2 538 0907
- Malaysia**
003 3 782 2868
- New Zealand**
004 945 755
- Philippines**
020 2 852 2260
- Singapore (ASEAN Headquarters)**
05 6331 0118
- Taiwan**
080 2 078 1758
- Thailand**
002 2 692 0000
- Vietnam**
04 8 422 0000

www.fujixerox.com

| | | |
|---|---------------------------------------|--|
| CONFIGURATIONS | | |
| Performance | Print Speed | A4 Colour and Mono Up to 25ppm Duplex Up to 20ppm |
| | First-page-out Time | Colour: <6.3 seconds; Black & White: <6.3 seconds |
| Warm-up Time | | <30 seconds |
| | Memory (std / max) | 256MB / 1,5GB (512MB + 1GB) |
| PCL | Processor | 667MHz |
| | Duty Cycle (max) | 150,000 pages / month |
| (Printer Description Languages) | Connectivity | PCL XL, PCL5c, FX-PDF, XPS, HPGL, HPGL2 and PostScript® 3™, 11f, ESC / P-K |
| | Internal Hard Drive (optional) | 40GB |
| Output Resolution | Connectivity | 10 / 100BaseTX Ethernet, USB 2.0 x 2 ports (Type B), Parallel Port (optional), EP-A ¹ |
| | Paper Handling | Tray 1: 560 sheets, Custom sizes: 140 x 182mm – 297 x 432mm; Single Tray Module: 560 sheets x 1 Feeder Unit 3 Tray Module: 560 sheets x 3 Feeder Unit Optional: Duplex Bypass Tray: 100 sheets |
| Paper Input² Capability | | 400 sheets (A4) / 200 sheets (A3), Face down |
| | Warranty | Please check with your Fuji Xerox Printers reseller for more information |

¹ PostScript® version 3/1.04 ² Front back ³ Based on Japan Paper

SPECIFICATIONS

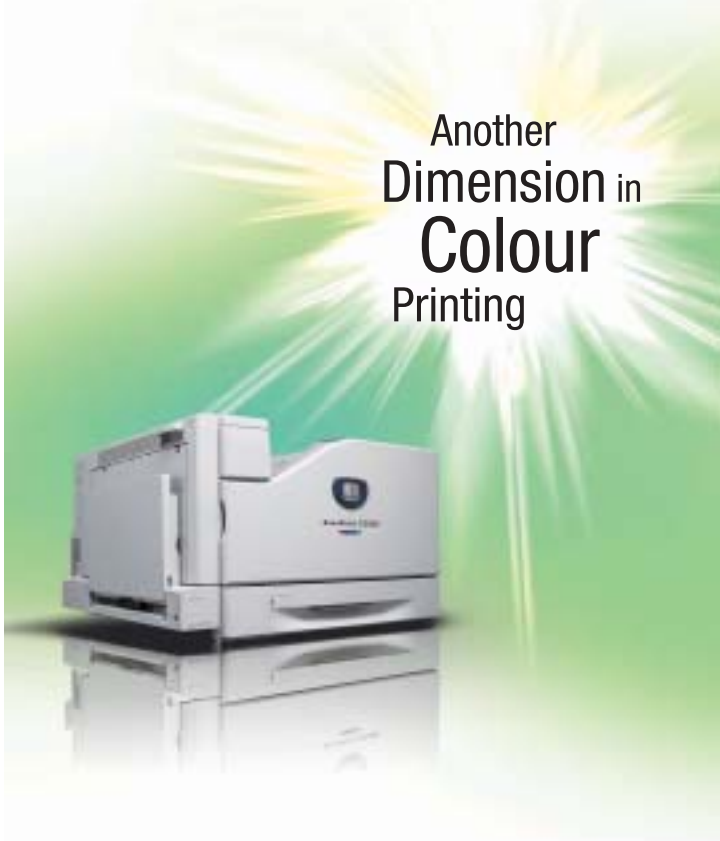
Network / Software
Printer Management CentreWare® Internet Services, ApesWare Easy Admin 1.0.6 or later (optional)
Printer Drivers Windows® 2000 / XP (32 / 64-bit) / Vista (32 / 64-bit) / Server® 2003 (32 / 64-bit) / Mac OS 9.0-9.2.2 / OS X (10.3.9-10.4.1), Linux® Red Hat® 8.0-9.0, NetWare® 3.X, 4.X, 5.X, 6, 6.5*, SUSE® 9.0, Citrix® Presentation Server™, SAP® R / 3®

Media Support
Standard Tray A3, A4, A5, B4, B5, Letter, Legal 13 / 14, 140 x 182mm – 297 x 432mm
Light Weight: 60gsm, Heavy Weight: 250gsm
Single Tray Module A3, A4, A5, 140 x 182mm – 320 x 457mm
Light Weight: 60gsm, Heavy Weight: 250gsm
3 Tray Module A3, A4, A5, 140 x 182mm – 297 x 432mm
Light Weight: 60gsm, Heavy Weight: 250gsm
Bypass Tray SR43, A4, A5, A6, B4, B5, Letter, Legal 13 / 14, Postcard, C4 / C5 Envelope, Envelope, 89 x 96mm – 320 x 485mm, Banner size: 320 x 1,200mm
Light Weight: 55gsm, Heavy Weight: 250gsm
Duplex Unit SR43, A3, A4, A5, B4, B5, Letter, Legal 13 / 14, C4 / C5 Envelope, 128 x 140mm – 320 x 457mm
Light Weight: 55gsm, Heavy Weight: 160gsm

Operating
Dimensions 640 x 665 x 399mm (W x D x H)
Weight 63kg
Environment Temperature: Running: 5°C – 32°C, Standby: -20°C – 40°C; Humidity: Running: 15% – 85% RH*, Standby: 5% – 85% RH*, Altitude: 0 – 2,500m
Noise Levels Running: 54.5dB (A), Standby: 25.5dB (A)
Electrical Power: 220VAC – 240VAC, 50 / 60Hz; Power Consumption: Running: 1,450W, Standby: 100W, Power Saver Mode: 3W

* No file compression

Fuji Xerox Printers. Xpect more.



Another Dimension in Colour Printing

Fuji Xerox Printers

Fuji Xerox Printers

THE DOCUMENT COMPANY
FUJI XEROX

Innovative A3 Colour Printer with Cutting-Edge Self-Scanning LED Print Technology

capable of 1,200 x 2,400dpi output!

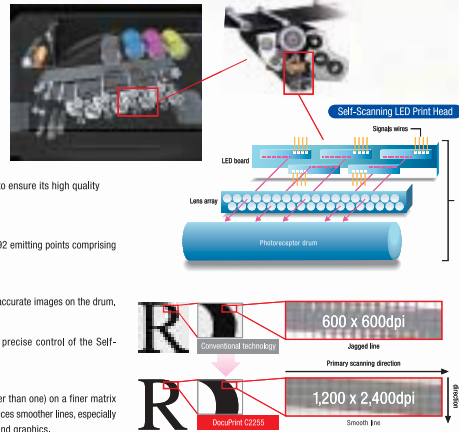


For those who demand exceptional colour reproduction and uncompromising performance, Fuji Xerox has the answer for you – the DocuPrint C2255 Colour Page Printer. It is a scalable colour printer with cutting-edge Self-Scanning LED Print Head technology that is able to print up to SRA3 and banner size. The DocuPrint C2255 is also networkable for various environments and comes with built-in and optional security features for top-notch confidentiality. And being environmentally responsible, the DocuPrint C2255 is safe and ecologically designed. So go beyond laser and let the DocuPrint C2255 dazzle you with its performance.

Fuji Xerox Self-Scanning LED Print Head Technology

Self-Scanning LED Print Head technology utilises a print head that creates an image on the print drum using LEDs (Light Emitting Diodes) as the light source. The light from the LEDs are directed through a lens array which forms the image document on the drum. However, the DocuPrint C2255 has five features, combining Advanced Self-Scanning LED Print Head Technology and Superior Imaging Technology, to ensure its high quality 1,200 x 2,400dpi output consistently:

- (i) **1,200dpi Self-Scanning LED chips**
This assures high quality printing with 14,592 emitting points comprising of 256 dots x 57 chips.
- (ii) **Newly designed lens**
The optically precise lenses produce highly accurate images on the drum.
- (iii) **Full-featured ASIC Driver**
The small, intelligent ASIC driver assures precise control of the Self-Scanning LED chips.
- (iv) **Image enhancement processing**
Images are scanned in two directions (rather than one) on a finer matrix than with conventional technology. This produces smoother lines, especially those at slight angles, for razor-sharp text and graphics.



High On Speed

- 25ppm colour and monochrome output
- Fast warm-up time of less than 30 seconds
- Fast colour first-page-out time $\lt; 8.3$ seconds
- 667MHz high-speed CPU
- 256MB RAM expandable to 1.5GB
- Shortened paper path via tandem + intermediate belt enables high-speed printing
- Optional Duplex printing to save time

High On Resolution

- 1,200 x 2,400dpi super high quality printing
- Accurate highlight coverage improves print stability in different environments
- Improved EA-HG Toner produces beautiful and vivid images

Easy-To-Use

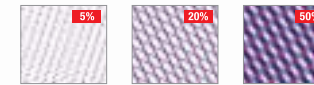
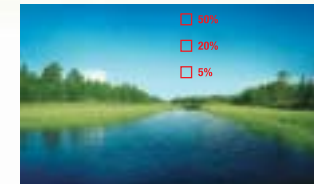
- Bright LCD control panel can display in four languages
- Intuitive easy operation
- Front access for easy consumable replacement
- Automatically switches to monochrome when colour toner runs out

- Light-weight paper tray opens easily



(v) MACS (Micro Accurate Control Screen) digital screening

It uses Fuji Xerox HQ digital screen technology (normally found only in high-end printers) which controls pixel production based on image density. This results in smooth gradation and excellent highlight reproduction.



The screen patterns shown on above photos are simulations only

In addition, other benefits of the DocuPrint C2255 over conventional printers are that there are fewer moving parts for better efficiency. It is compact with shorter optical path and smaller light emitting unit. It is also silent, more reliable and offers lower power consumption.

Cutting Edge Security

The DocuPrint C2255 ensures that your confidential documents remain confidential. Its built-in and optional security features allow you to always print with total peace of mind. These include:

- IPv6+IPSec, IEEE802.1X authentication* and SNMPv3 compatible for TCP/IP
- IPP+SSL security print
- Hard disk overwrite**
- Print user control
- Control panel lock
- Hidden Universally Unique Identifier (UUID) mark to detect copied documents*
- Secure Watermark to protect hard copy*

* Require optional hard disk and additional 256MB RAM or more
** Require optional Feature Enhancer Kit, hard disk, and additional 256MB RAM or more

Out-of-Box Capability for Enterprise Applications

SAP® R / 3®

- Customisable ApeosWare device type for duplex printing and input / output trays**
- PostScript and PCL barcode printing
- Unicode printing**
- Citrix printing via Print Utility for Citrix XenApp* Server**
- Access all printer features (i.e. duplex printing, N-Up, tray select, etc.)

* Available via download from <http://www.fujixerox.com>
** Requires the Multi-Language Font Kit (E101145), optional hard disk and additional 256MB RAM or more

