

Specifications of DocuPrint C2200

Print Functions

Print Speed	Simplex	Up to 25 ppm colour and black & white (A4)
	Duplex*	Up to 17 ipm colour and black & white (A4)
Print Resolution	600 x 600 dpi (multi-level)	
First-Page-Out Time	Less than 17 seconds (colour) / 14 seconds (black & white)	
Warm-up Time	Less than 30 seconds	
Memory (std/max)	256 MB/768 MB (256 MB + 512 MB)	
Processor	400 MHz	
PDL	PCL6, PCL5e, HBPCL (for scanner), FX-PDF, XPS, Adobe® PostScript® 3™	
Hard Disk (optional)	40 GB	
Connectivity	USB 2.0, Ethernet 10/100Base-TX	
Operating System	Windows® 2000/XP (32 / 64-bit) / Vista® (32 / 64-bit) / Server® 2003 (32 / 64-bit) / Server® 2008 (32 / 64-bit), Mac OS X (10.3 - 10.5), Red Hat® Enterprise Linux® WS v.4, SUSE® Linux® 10.0, Citrix XenApp™, SAP® R/3®	
Input Paper Size	Bypass Tray: A4, B5, A5, Legal (8.5 x 14"), Folio (8.5 x 13"), Letter (8.5 x 11"), Executive (7.25 x 10.5"), envelopes (Monarch, Com 10, DL, C5), Custom (width 76.2 to 220.0 mm, length 98.4 to 355.6 mm) Paper Tray: A4, B5, A5, Legal (8.5 x 14"), Folio (8.5 x 13"), Letter (8.5 x 11"), Executive (7.25 x 10.5"), Custom (width 148.5 to 215.9 mm, length 210.0 to 355.6 mm)	
Input Paper Weight	Bypass Tray: Lightweight: 60 gsm; Heavyweight: 216 gsm Paper Tray: Lightweight: 60 gsm; Heavyweight: 216 gsm	
Media Input Capacity ¹⁾	Standard	Paper tray: 250 sheets, Bypass tray: 150 sheets
	Optional	550-sheet feeder: 550 sheets
Media Output Capacity ¹⁾	250 sheets (A4) face down	
Dimensions (W x D x H)	400 x 507 x 473 mm	
Weight	24.4 kg	
Power Supply	220 - 240 VAC, 50/60 Hz, 5 A	
Power Consumption	Maximum: 900 W; Printing: 420 W; Standby: 95 W, Sleep: 9 W or less	
Environment	Temperature: 10 °C - 32 °C (when printing); Humidity: 15% - 85% (when printing);	
Noise Levels	Standby mode: Less than 4.0 B Printing mode: Less than 6.9 B (7.4 B ¹⁾)	
Warranty	Please check with your Fuji Xerox Printers reseller for more information.	

* Requires optional duplex unit.

¹⁾ Based on A4 gsm plain paper.

¹⁾ When using optional memory, hard disk unit, duplex unit and 550 sheet feeder.



Descriptions in this material, product specifications and/or appearances are subject to change without prior notice due to improvements. Please note that the product colour appears differently from the actual colour as a result of properties of paper or printing ink. Windows and Windows NT are registered trademarks of Microsoft Corporation. NetWare is a registered trademark of Novell, Inc. in the United States, Macintosh, Mac OS and iMac are trademarks of Apple Computer, Inc. PostScript is a registered trademark of Adobe Systems Incorporated in each country. HP-GL is a registered trademark of Hewlett-Packard Company. iBLink is a trademark of the Japan Business Machine and Information System Industries Association (JBMA). Other company names or product names are registered trademarks or trademarks of each company.

Consumables

Black print cartridge (up to 9,000 pages*)	CT350674	
Cyan print cartridge (up to 9,000 pages*)	CT350675	
Magenta print cartridge (up to 9,000 pages*)	CT350676	
Yellow print cartridge (up to 9,000 pages*)	CT350677	
Periodic Replacement Items	Fuser Unit ¹⁾ 220 V (up to 100,000 pages ¹⁾)	EL300729
	Belt Unit (up to 100,000 pages ¹⁾)	EL300727

* Average standard pages. Declared yield in accordance with ISO/IEC 19752. Yield will vary depending on image area, coverage and print mode. Printer is shipped with one starter print cartridge with an average yield of 6,000 pages for black and 4,000 pages for cyan, magenta and yellow.
¹⁾ Includes three feed rollers in the standard tray and three feed rollers in the optional tray.
¹⁾ Declared yield based on an average job size of three letter- or A4-size pages. Yield will vary based on job length, media size, media type and orientation.

Accessories (optional)

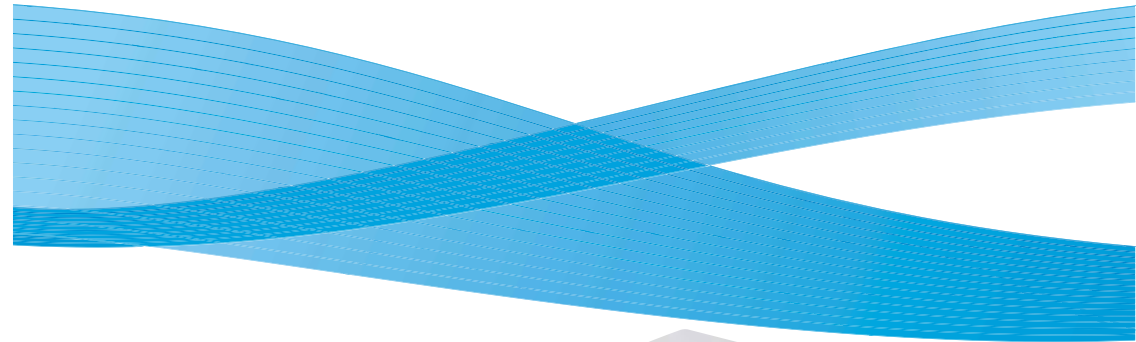
550-sheet Feeder	A4, B5, A5, 148.5 x 210.0 to 215.9 x 355.6 mm Light: 60 gsm; Heavy: 216 gsm	EL300629
Duplex Unit	A4, B5, A5, Legal (8.5 x 14"), Folio (8.5 x 13"), Letter (8.5 x 11"), Executive (7.25 x 10.5"), 148.5 x 210.0 to 215.9 x 355.6 mm Lightweight: 60 gsm; Heavyweight: 163 gsm	EL300630
Hard Disk (40 GB)		EL300730
512 MB Memory		EL300633

DocuPrint C2200



DocuPrint C2200 Colour Printer

Fast, affordable, business-class colour



<Reproduction Prohibitions> Please note that reproduction of the following is prohibited by law: Domestic and overseas bank notes and coins, government-issued securities, national bonds and local bond certificates, Unused postage stamps and post cards, Certificate stamps stipulated by law. The reproduction of works for copyright purposes (literary works, musical works, paintings, engravings, maps, cinematographic works, photographic works, etc.) is prohibited except when they are reproduced personally at home or within limited range according to the above. This product is equipped with an anti-counterfeit feature. This feature is not intended to prevent illegal reproduction. Be extremely careful about the management of equipment used.

⚠ For Your Safe Use
 Before using the product, read the Instruction Manual carefully for proper use.
 Use the product with an appropriate adequate power source and voltage displayed. Be sure to establish a ground.
 In the case of a failure or short circuit, an electric shock may result.



For more information or detailed product specifications, Please call or email or visit our website at:

Fuji Xerox Asia Pacific Pte Ltd
 80 Anson Road #36-00
 Fuji Xerox Tower Singapore 079907
 Tel: +65 6351 0118 Email: sgp.sales@fujiXerox.com

<http://www.fxprinters.com.sg>

A colour laser with all the right features.

Fleet performance, network ready and very affordable. The compact and hardworking DocuPrint C2200 delivers uncompromising quality and a full-range of office-friendly features that are ideal for busy workgroups.



Fits your office and budget

Maximize office productivity with minimum overhead. The DocuPrint C2200 proves that efficiency need not be expensive as it offers a variety of big-printer advantages that are seldom found on other printers in its class.

- **Fast and trouble-free installation** gets you up and running without time-consuming and expensive support calls.
- **Economical high-yield toner cartridges** reduce per page cost and minimize down time for replacement.
- **A low energy consumption rating** makes the DocuPrint C2200 both green and economical.
- **Administration tools** provide intuitive, browser-based configuration of printer and user settings.

Crisp, professional-looking documents

High-resolution and superior colour combine to give your documents a polished look. Photos come to life with breathtaking clarity, while charts and graphs command special attention — a nice touch for the office that wants to look its best.

- **Razor-sharp printing** at 9600 x 600 dpi produces crystal-clear text, photos, and graphics. Even small text and super-fine lines display exceptional sharpness.
- **Rich and vibrant colour** is yours thanks to Fuji Xerox's unique EA-HG toner. The small and uniformly shaped toner particles deliver breathtaking results.
- **Compatibility with Adobe® PostScript® 3™ and PCL6** lets you choose the right driver for the application, thereby giving you increased control over print operations.

Performance-based functionality

Designed to satisfy the demanding needs of busy workgroups, the DocuPrint C2200 has the power for any office. Whatever the task, outstanding speed and responsiveness keep your office humming at peak productivity.

- **Lightning-quick 25 ppm output** and a fast full-colour first-page-out-time of less than 17 seconds reduce waiting time and eliminate bottlenecks at the printer.
- **A 400 MHz processor and 256 MB RAM** (expandable to 768 MB) shorten the processing time of complex and graphics-intensive documents.
- **Optional duplex unit and 550-sheet feeder** vastly expand output capabilities — excellent for printing multiple sets of multiple pages documents and reduce user's intervention to refill the paper.



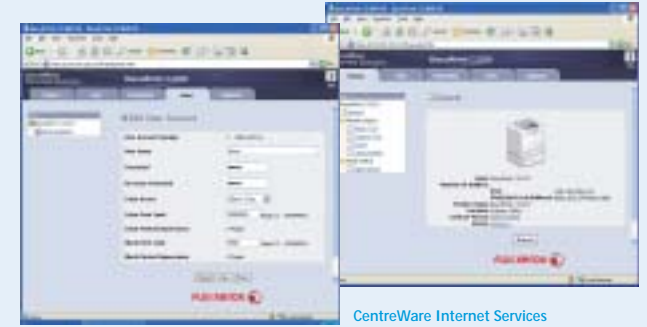
Effortless maintenance and administration

The DocuPrint C2200 is a joy to users and administrators. Replacing consumables is fast and straightforward while printer and user administration is as simple as point-and-click.



Easy front access

Consumables such as toner, fuser and belt unit are conveniently located and easily accessed from the front. This intelligent design reduces the space needed for installation.



CentreWare Internet Services

Simplify installation and configuration. Also, to obtain up-to-the-minute status reports with this browser-based software. Automatic e-mail alerts notify administrators or users of events that require attention such as low toner levels.

Fuji Xerox Auditor

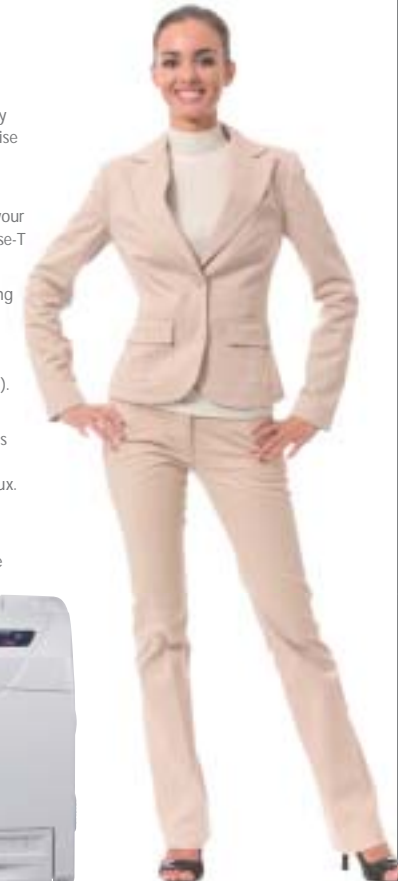
Keep track of printer usage and set print limits to users with this comprehensive set of management tools for network administrators.

Comprehensive networking

Versatile connectivity and a host of privacy features make the DocuPrint C2200 the wise choice for today's complex and security conscious environments.

- **Multiple interfaces** allow connection to your existing office LAN via 100Base-TX/10Base-T or directly to a computer via USB 2.0.
- **Solid security features** provide everything you need to protect confidential data — both over office LANs and the Internet. Tools include IPv6+IPSec, IEEE802.1X authentication* and SNMPv3 (for TCP/IP).
- **Multiple platform compatibility** extends not only to Windows and Macintosh networks but also various versions of Linux.
- **Full-featured Citrix XenApp™ and SAP R/3®** enterprise printing solutions can be easily rolled out using ApeosWare Device Type.

* Requires the optional hard disk.



Environmentally conscious

Fuji Xerox shares your concern for the earth and strives to minimize the environmental impact of all our activities. Our environmental responsibility covers the entire life of the DocuPrint C2200, from manufacturing and operation, to production and recycling of consumables.

Oil-free and reduced CO₂ emissions

EA-HG toner used in the DocuPrint C2200 does not contain oil, thereby helping to conserve this precious resource. In addition, the amount of CO₂ emitted during manufacturing is reduced up to 35%, further reduce environmental burden.

Power saving operation

The DocuPrint C2200 consumes only 9 W of electricity per hour during sleep mode and has a highly efficient TEC (typical electricity consumption) of 2.351 kWh per week.

Forest-friendly

Packaging for high-capacity (9,000-page) toner cartridges consumes 20% less paper than packaging for low-capacity cartridges used by some of our competitors. Likewise for your printing paper, Fuji Xerox forest-friendly packaging utilizes recycled paper.

Certified energy efficient

The DocuPrint C2200 carries International Energy Star certification. Energy Star is a voluntary labelling program designed to identify and promote energy-efficient products to reduce greenhouse gas emissions.

