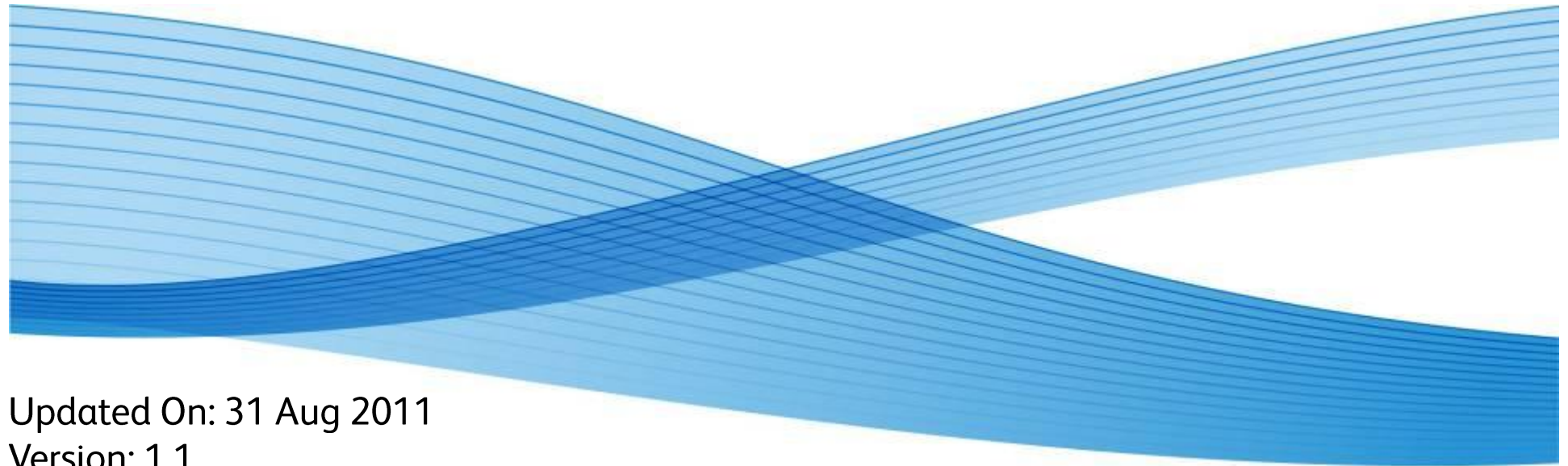


# Welcome To “Fuji Xerox Print&Scan Utility For iOS” Setup Procedure



Updated On: 31 Aug 2011  
Version: 1.1

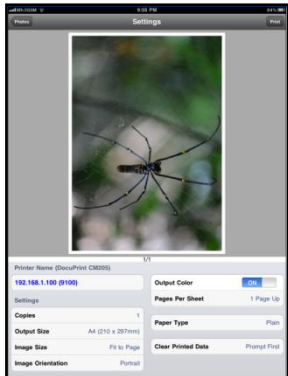
(1) Connect To Wireless Router (Internet connection is required)

(2) Download and Install the “*Fuji Xerox Print&Scan Utility For iOS*”

(3) Print & Scan With “*Fuji Xerox Print&Scan Utility For iOS*”

*Supported models: DocuPrint CP 205, CP205 w, CM205 f, CM205 fw*

**NOTE:** *This following procedure was created based on iPad 2*



iPad



Wireless Router

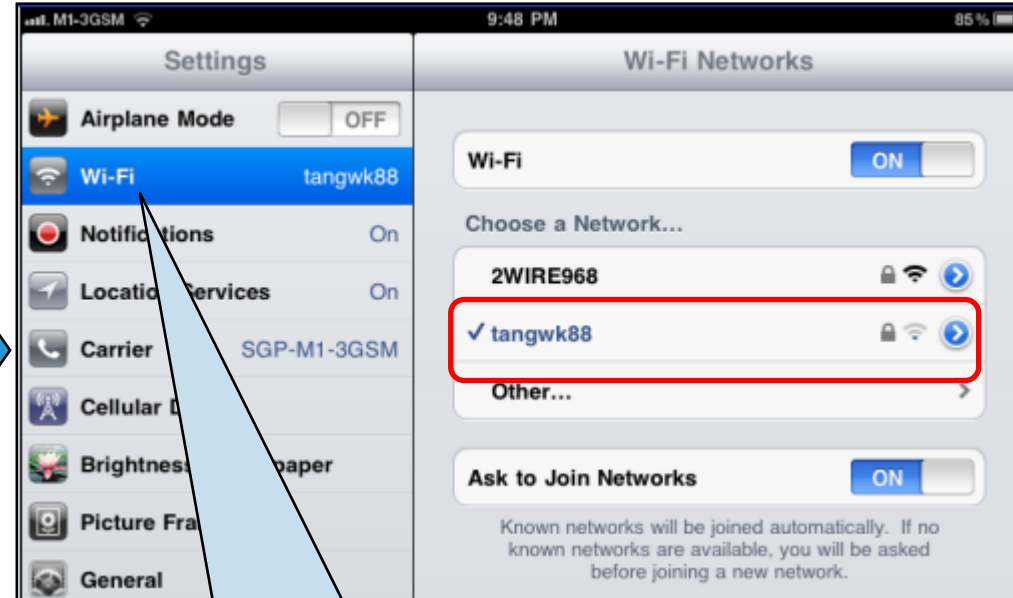


Fuji Xerox network printer  
Eg. DocuPrint CM205 fw

# (1) Connect To Wireless Router



Step 1: On the iPad Home Screen, select [Settings].



Step 2: Select [Wi-Fi] and the available wireless devices will be displayed.  
Step 3: Select the right router and input the password if prompted.

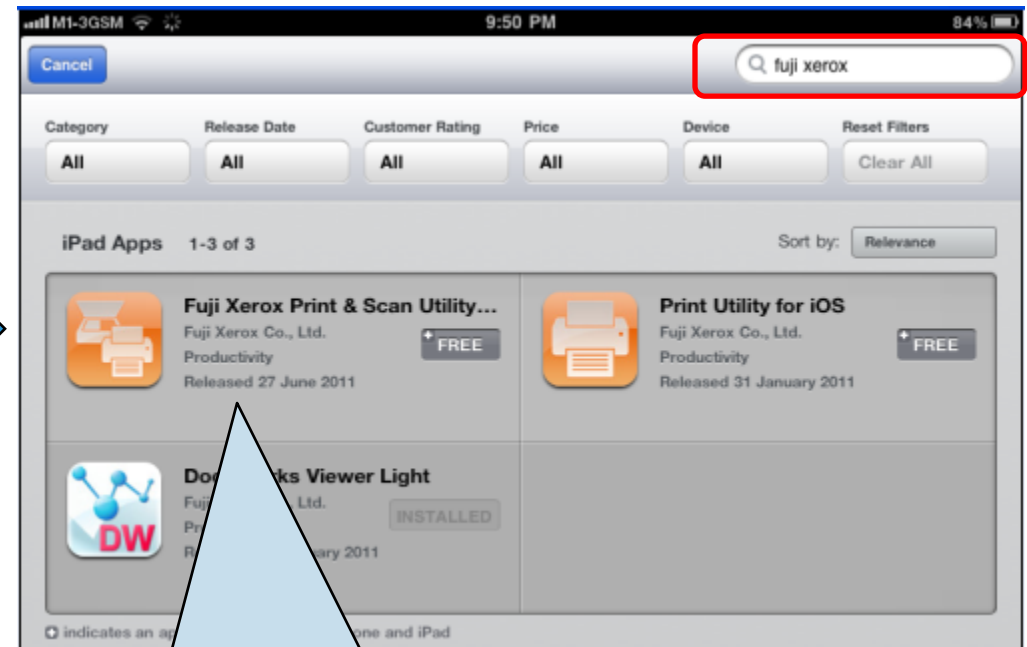
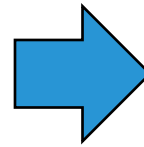
## (2) Download and Install FX Print&Scan Utility For iOS

FUJI XEROX INTERNAL USE ONLY

Disclose to : ALL  
Protect until : 20XX.XX.XX  
Handling : No Copy etc.  
Author : Service & Tang Wee Khiong  
Prepared on : 25 Aug 2011

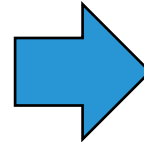


Step 4: On the iPad Home Screen, select [App Store].



Step 5: Search by "Fuji Xerox".  
Step 6: Select [Fuji Xerox Print & Scan Utility] to download.

## (2) Download and Install FX Print&Scan Utility For iOS



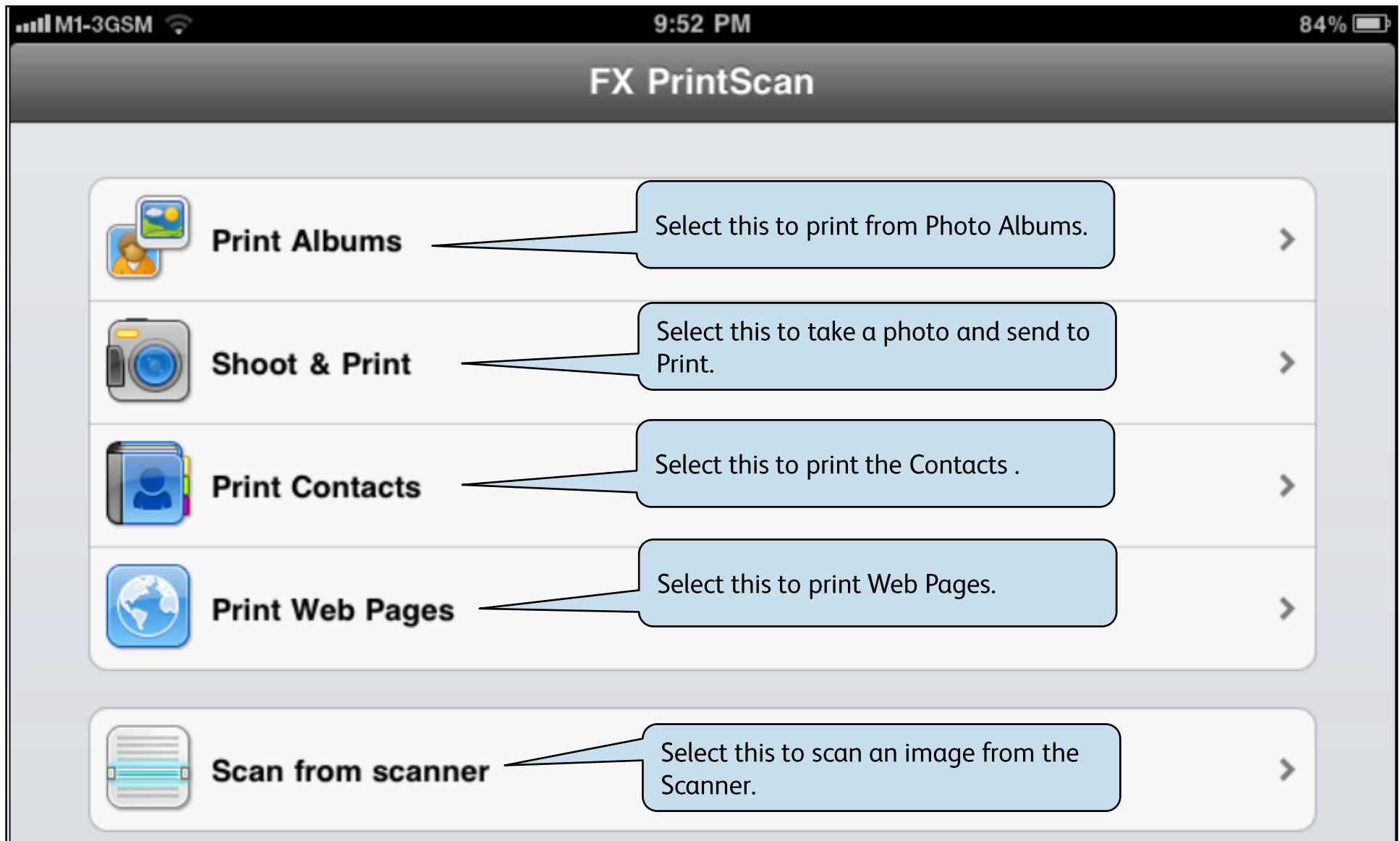
Step 7: Select [Install] and input the Apple ID Password if prompted.

Step 8: Once the installation is completed, the icon "FX PrintScan" is displayed.  
Step 9: Select [FX PrintScan] to continue.

# (3) Print & Scan With Fuji Xerox Print&Scan Utility For iOS

FUJI XEROX INTERNAL USE ONLY

Disclose to : ALL  
Protect until : 20XX.XX.XX  
Handling : No Copy etc.  
Author : Service & Tang Wee Khiong  
Prepared on : 25 Aug 2011



# (3) Print & Scan With Fuji Xerox Print&Scan Utility For iOS (PRINT)

FUJI XEROX INTERNAL USE ONLY

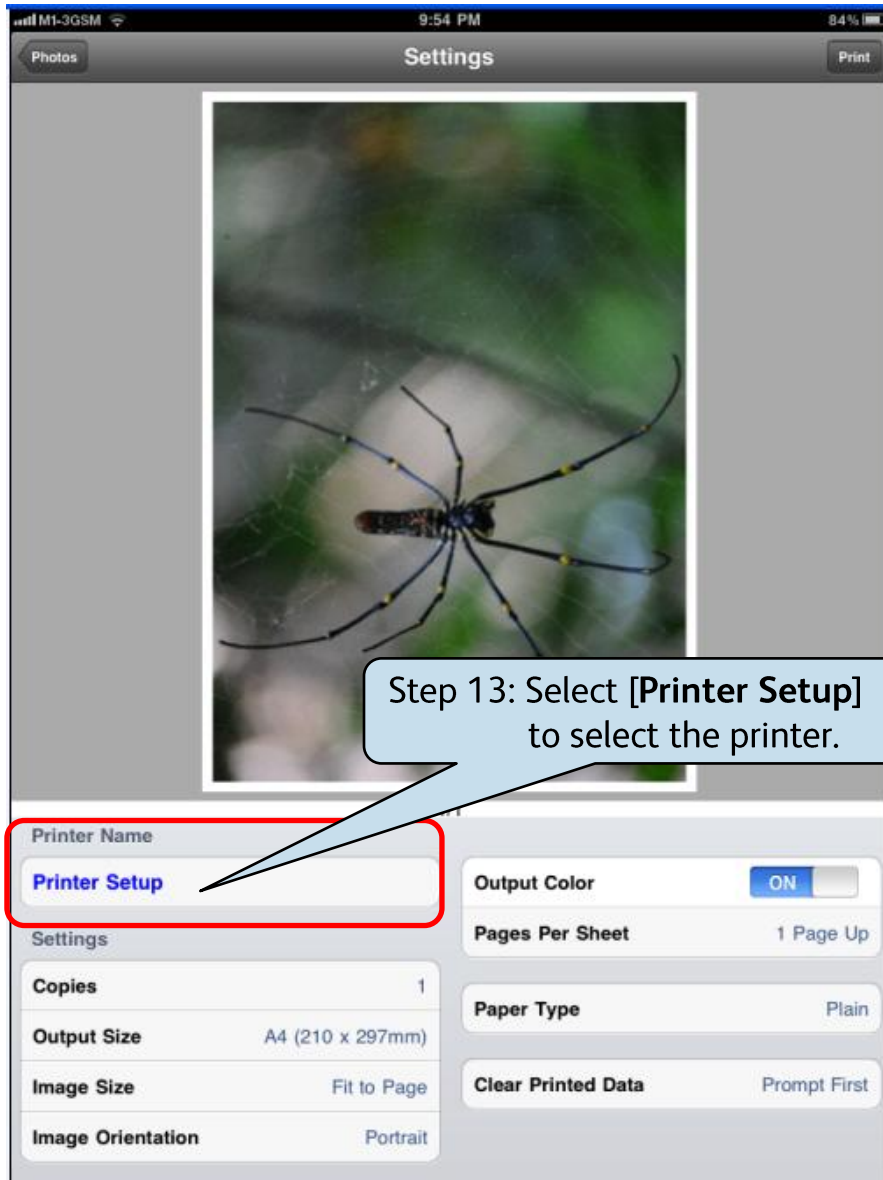
Disclose to : ALL  
Protect until : 20XX.XX.XX  
Handling : No Copy etc.  
Author : Service & Tang Wee Khiong  
Prepared on : 25 Aug 2011

The image displays two screenshots of the Fuji Xerox Print&Scan Utility app on an iPhone. The top screenshot shows the main menu with the following options: 'Print Albums', 'Shoot & Print', 'Print Contacts', and 'Print Web'. A callout box points to 'Print Albums' with the text: 'Step 10: Select [Print Albums].'. The bottom screenshot shows the 'Photos' album with a photo of a spider selected. A callout box points to the photo with the text: 'Step 11: Choose the photo(s) from the photo Albums.'. Another callout box points to the 'Settings' button in the top right corner with the text: 'Step 12: Select [Settings] to continue.'.

# (3) Print & Scan With Fuji Xerox Print&Scan Utility For iOS (PRINT)

FUJI XEROX INTERNAL USE ONLY

Disclose to : ALL  
Protect until : 20XX.XX.XX  
Handling : No Copy etc.  
Author : Service & Tang Wee Khiang  
Prepared on : 25 Aug 2011



**Copies:** 1 to 99

**Output Size:** A4 (210 x 297mm)  
Letter (8.5 x 11")  
Postcard (4 x 6")  
5 x 7"  
Postcard (100 x 148mm)

**Image Size:** Fit to Page  
3.5 x 5"  
5 x 7"  
Postcard (100 x 148mm)

**Image Orientation:** Portrait  
Landscape

**Output Color:** ON / OFF

**Pages Per Sheet:** 1, 2, 4, 8, 16, 32 Pages Up

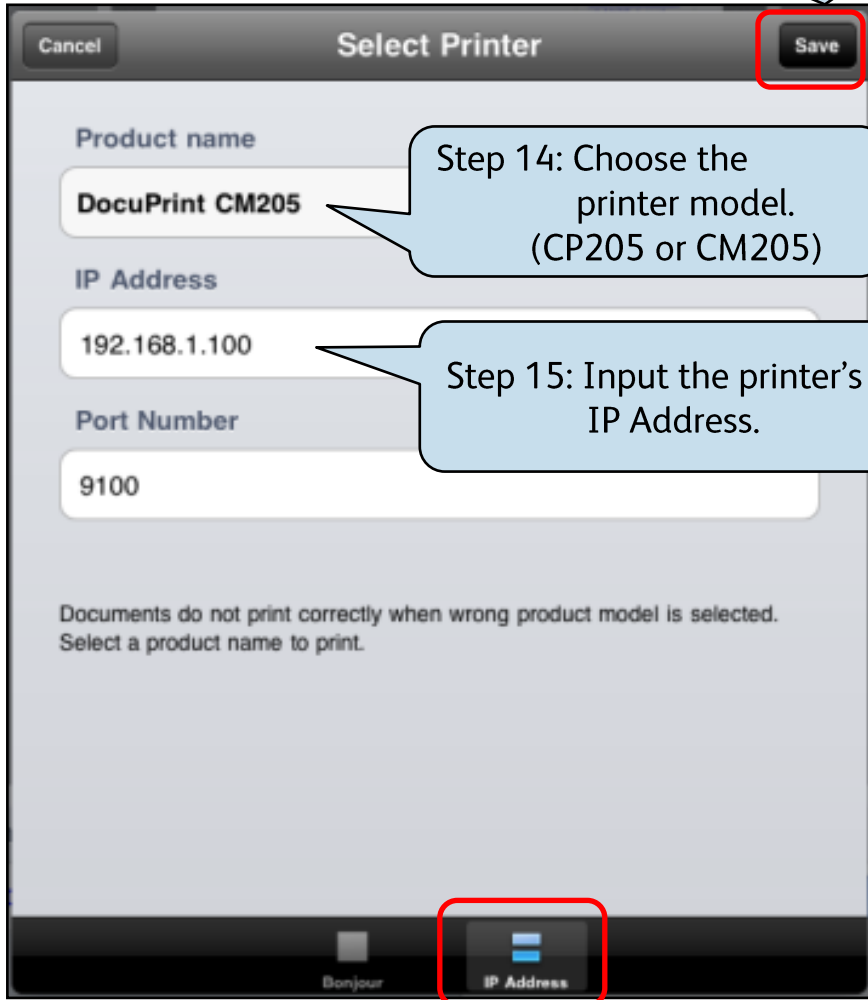
**Paper Type:** Plain  
Heavyweight  
Heavyweight Reload

**Clear Printed Data:** Prompt First  
Immediately



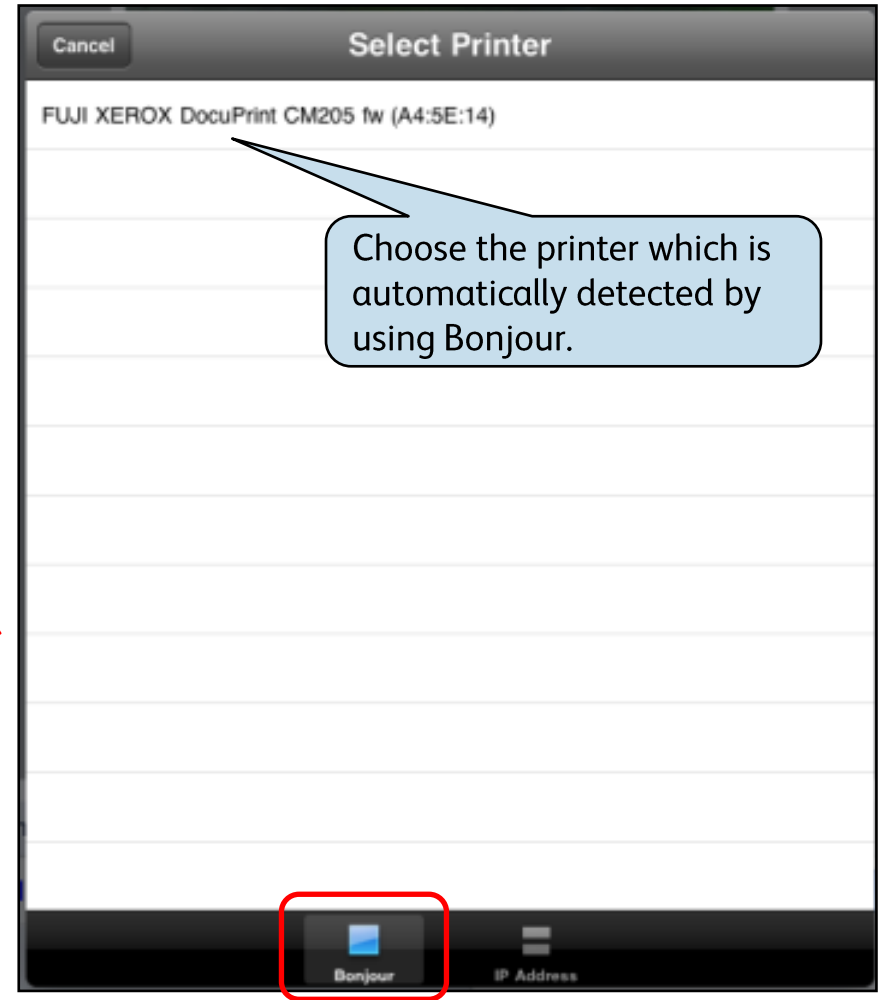
# (3) Print & Scan With Fuji Xerox Print&Scan Utility For iOS (PRINT)

Step 16: Select [Save] to continue.



**Method 1: Print by using "IP Address"**

OR



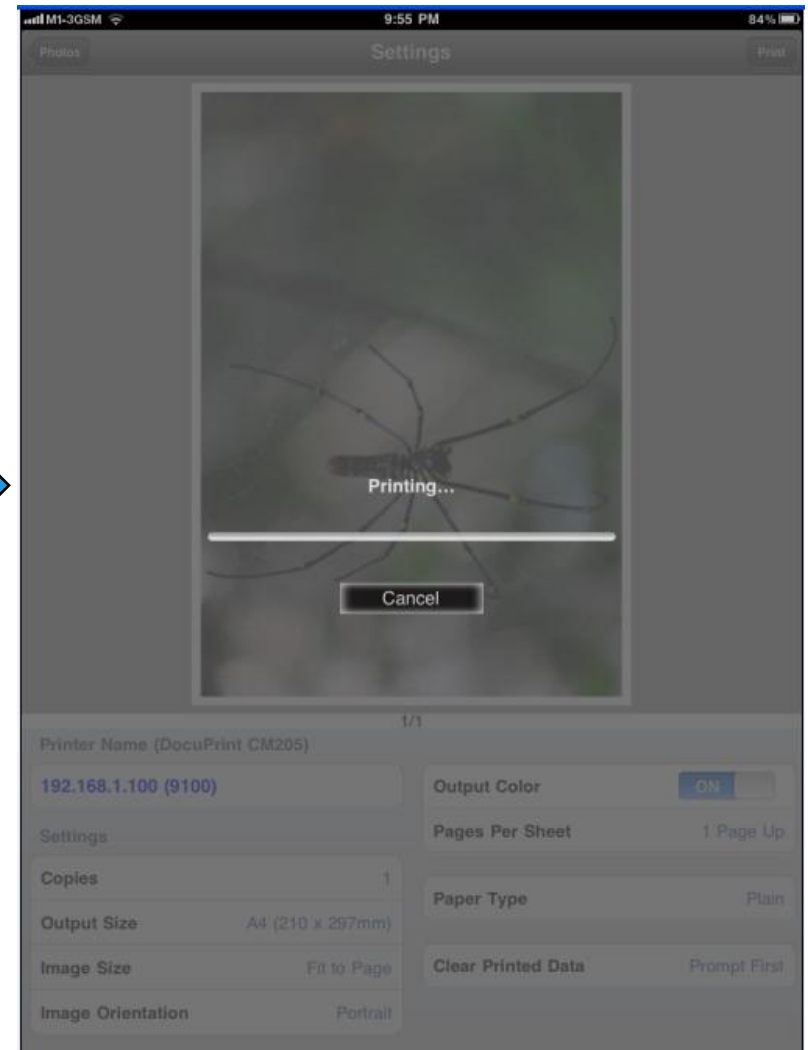
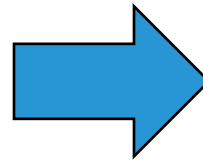
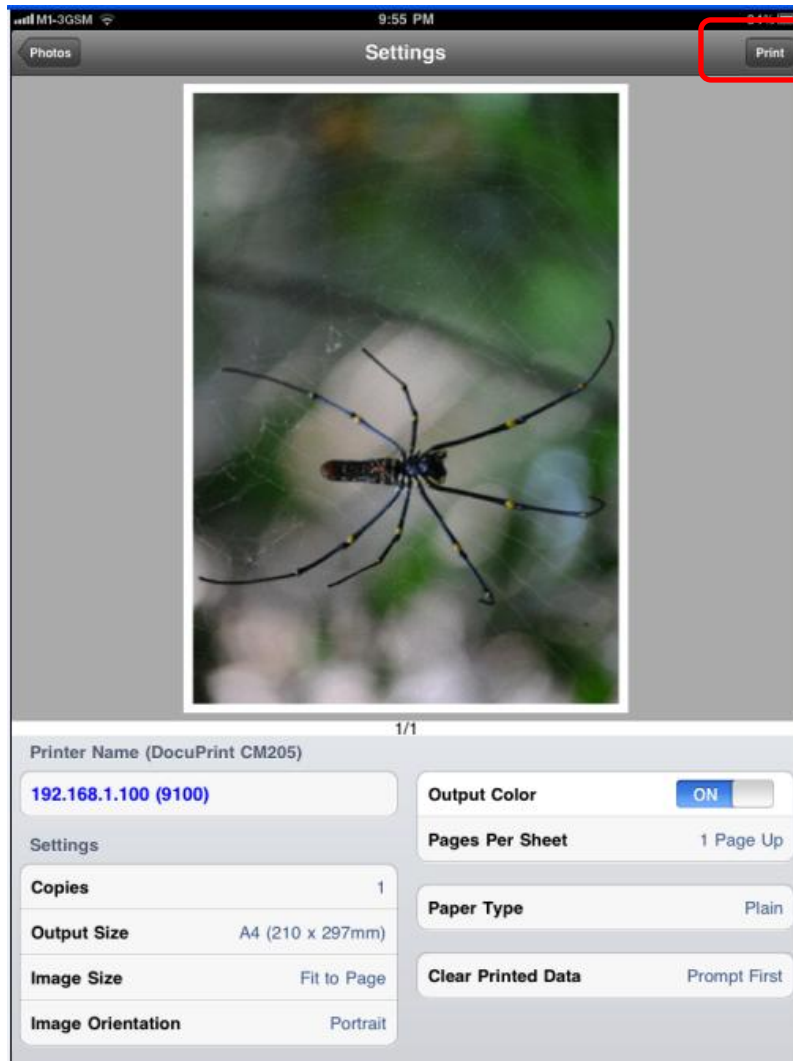
**Method 2: Print by using "Bonjour"**

# (3) Print & Scan With Fuji Xerox Print&Scan Utility For iOS (PRINT)

FUJI XEROX INTERNAL USE ONLY

Disclose to : ALL  
Protect until : 20XX.XX.XX  
Handling : No Copy etc.  
Author : Service & Tang Wee Khiong  
Prepared on : 25 Aug 2011

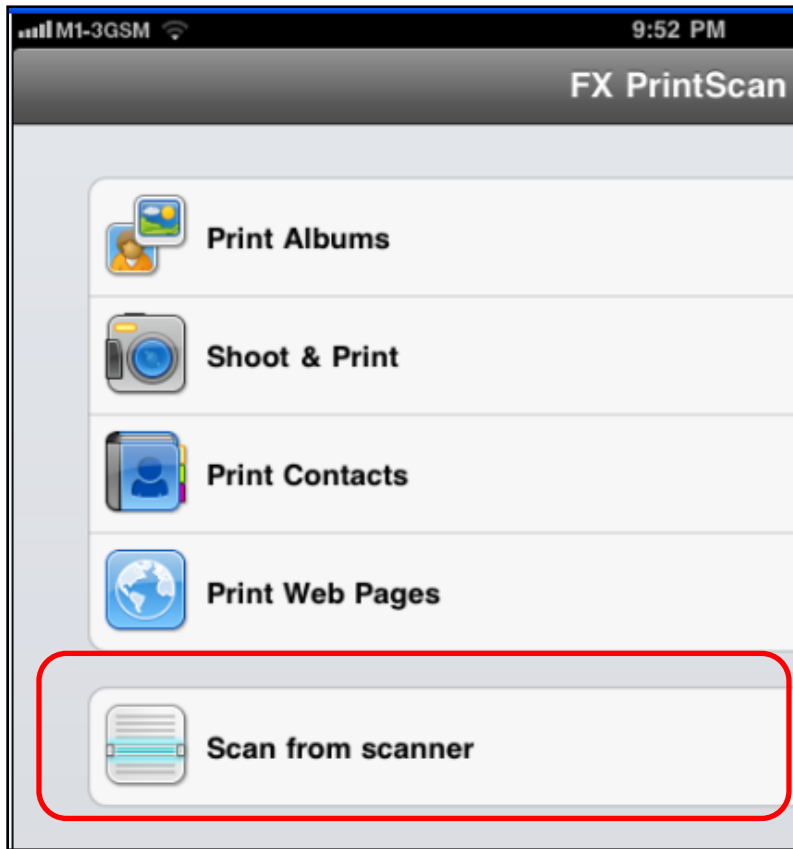
Step 17: Select [Print] to print the photo.



# (3) Print & Scan With Fuji Xerox Print&Scan Utility For iOS (SCAN)

FUJI XEROX INTERNAL USE ONLY

Disclose to : ALL  
Protect until : 20XX.XX.XX  
Handling : No Copy etc.  
Author : Service & Tang Wee Khiong  
Prepared on : 25 Aug 2011



Scan Size: A4 (210 x 297mm) / Letter (8.5 x 11")

Resolution: 200dpi / 300dpi

Image Type: 24-bit Full Color / 8-bit Grayscale

Output File Format: PEG / PDF

