

Options

Scanner Stand ES100011

Dimensions (W x D x H):
577 mm x 735 mm x 980 mm
Weight: 19 kg
(Can be used with both the DocuScan C4250 and
DocuScan C3200 A.)

CONFIGURATIONS	DocuScan C4250	DocuScan C3200 A
Performance		
Type	Flatbed/DADF scanner	Flatbed/DADF scanner
Scan Type	CCD sensor	CCD sensor
Resolution (optical)	600 dpi	600 dpi
Resolution settings	600 dpi, 400 dpi, 300 dpi, 200 dpi	600 dpi, 400 dpi, 300 dpi, 200 dpi
Operating System	Windows® 98/ME/NT/2000/ XP/Server™ 2003	Windows® 98/ME/NT/2000/ XP/Server™ 2003
Interfaces	Ethernet, USB2.0 (Type A)	Ethernet, USB2.0 (Type A)
Flatbed scan area	A3	A4
DADF	Built-in	Built-in
DADF scan area	A3	Legal
Duplex	Yes	Yes
DADF capacity	50 sheets	50 sheets
Simplex scan speed (black/colour or grey)	40 spm/23 spm*	31 spm/20 spm*
Duplex scan speed (black/colour or grey)	20 spm/14 spm*	15 spm/10 spm*
Paper size (max.)	297 mm x 432 mm	215.9 mm x 355.6 mm
Paper size (min.)	100 mm x 148 mm	140 mm x 140 mm
Paper weight (simplex)	35-120 g/m2	60-105 g/m2
Paper weight (duplex)	50-120 g/m2	60-105 g/m2
Power Consumption	120 W	100 W
Standby	40 W	35 W
Dimensions (W x D x H)	582 mm x 658 mm x 209 mm	448 mm x 502 mm x 194 mm
Weight	24 kg	15 kg
Warranty	One year on-site warranty	

*Scan speed is calculated at A4 size, 300dpi

SPECIFICATIONS

Type

Colour scanner (flat bed/sheet field)
Reduced optical CCD scanner

Scan size

DocuScan C4250

Max. : 297.0 x 432.0 mm
Min. : 15.0 x 15.0 mm

DocuScan C3200 A

Max. : 215.9 x 297.0 mm
Min. : 15.0 x 15.0 mm

Optical resolution

Main scan : 600 dpi (23.6 dot/mm)
Sub-scan : 600 dpi (23.6 dot/mm)

Output resolution

600, 400, 300, 200 dpi (23.6, 15.7, 11.8,
7.9 dot/mm)

Interface

100BASE-TX/10BASE-T, USB2.0 (Type A)
(Hi-Speed, HOST USB)

Output format

Black

TIFF (single-page/multi-page), XDW, PDF

Greyscale

TIFF, JFIF(JPEG), XDW, PDF

Full colour

TIFF, JFIF(JPEG), XDW, PDF

Note: Uncompressed formats are not supported.

Data compression format

Black

MH (photo), MMR (text, text/photo)

Greyscale

JPEG

Full colour

JPEG

Supported protocol

TCP/IP (FTP, SMB, SMTP)

Power

AC100 - 240V ± 10%, 50 Hz/60 Hz
common

Power consumption

DocuScan C4250

Operation : 120 W or less
Stand-by : 40 W or less
Power Saver mode : 9 W or less

DocuScan C3200 A

Operation : 100 W or less
Stand-by : 35 W or less
Power Saver mode : 9 W or less

The scanner does not use electricity when the power
is switched off even if the power cord is plugged in.

Dimensions

DocuScan C4250

W 582.0 x D 658.0 x H 209.0 mm

DocuScan C3200 A

W 448.0 x D 502.0 x H 194.0 mm

Weight

DocuScan C4250 : 24.0 kg

DocuScan C3200 A : 15.0 kg

Space requirements

DocuScan C4250

W 732.0 x D 1394.0 mm

DocuScan C3200 A

W 648.0 x D 1119.0 mm

Customer Support

One year on-site warranty plus web and
telephone technical support. Optional
extended warranties available.

Warranty varies by location.

For details please check with your local
Fuji Xerox Printers office (AUS: 1800 811 177,
NZ: 0800 449 177) or online at
www.fxprinters.com

A New Era in Workplace Functionality



For more information or for
your nearest authorised
Fuji Xerox Printers reseller,
visit our web site or call:

Australia 1300 793 769
New Zealand 0800 993 769

www.fxprinters.com

FXprinters.com



©2006 Fuji Xerox Printers. All rights reserved. Contents of this publication may not be reproduced without permission of Fuji Xerox Printers. Xerox, The Document Company, the stylised X, Phaser, CentreWare® and PhaserSmart® are registered trademarks/trademarks of Xerox Corporation. All other names mentioned are trademarks of their respective companies. The information in this brochure is subject to change without notice. Errors and omissions excepted. Fuji Xerox Printers practice a policy of continued product development, this means that product specifications may incorporate innovations and/or enhancements resulting from ongoing research & development (and may vary from those specified in brochures at time of printing). In keeping with normally accepted commercial practices, the purchaser is advised to both confirm product specifications, and satisfy themselves as to product performance and exact configuration (to suit each particular requirement) before purchase. Fuji Xerox Printers will not accept any liability (product related and/or resulting from product usage) where such due diligence has not been performed and the incorrect product has been purchased.



Fuji Xerox Printers

DocuScan C3200 A
A4-size scanning
20 spm colour scanning
31 spm monochrome scanning
at 300 dpi



DocuScan C4250
A3-size scanning
23 spm colour scanning
40 spm monochrome scanning
at 300 dpi



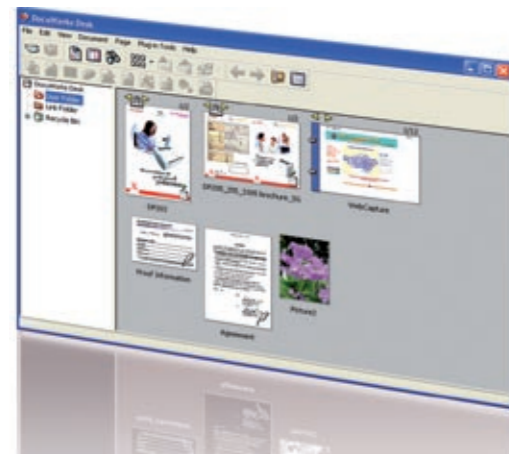
DocuScan C4250 and C3200 A

Outstanding Scanning and Copying Capabilities

New high-speed colour network scanners from Fuji Xerox add a new level of functionality to your workplace

Used independently or as an inexpensive add-on to your DocuPrint* colour laser printer, these scanners combine super-fast document processing with the versatility to meet the precise needs of your working environment. Full-featured scanning and copying capabilities and a range of highly-effective tools enable you to create PDFs from hard copy, produce email documents from hard copy and more – plus you can depend on quality that is second to none.

The DocuWorks software is an easy way to digitalise all your company's documents. Functions of Instant searching, quick browsing and unified printing will improve your company's paper work management and will help you set-up a "paperless office".



Outstanding Scanning

A high performance media processor and control technology developed jointly by Fuji Xerox and Intel gives you 10 times more processing power than Pentium 4!

- Operate your scanner from a network PC or directly
- High-quality input
- New Image Resolution Enhancement for better quality scanning from the duplex automatic document feeder (DADF) or flat-bed scanning.
- Built-in duplex scanning capability
- Large, bright 4.7-inch easy-to-use touch-screen colour LCD gives a clear view of all document information
- Preview scanned images before saving or sending
- Rotate documents
- Control all operations from the scanner – you don't need a PC
- Scan documents then send them directly to an email address or an FTP server. Store up to 350 email, SMB, and FTP addresses in the memory.
- Save scanned documents to a server or USB flash memory.
- Advanced Security Features include password authentication and administration tools
- DocuWorks 5.0 software for increased productivity



A simple plug-and-play connection to your DocuPrint* printer via a USB2.0 interface creates a cost-effective multifunction capability. The units modular design allows great flexibility in networking between multiple devices and positioning in any workplace.

DocuScan delivers powerful document processing and archiving capabilities

With DocuScan's powerful features it will quickly become the hub of productivity in your workplace

Scan to email

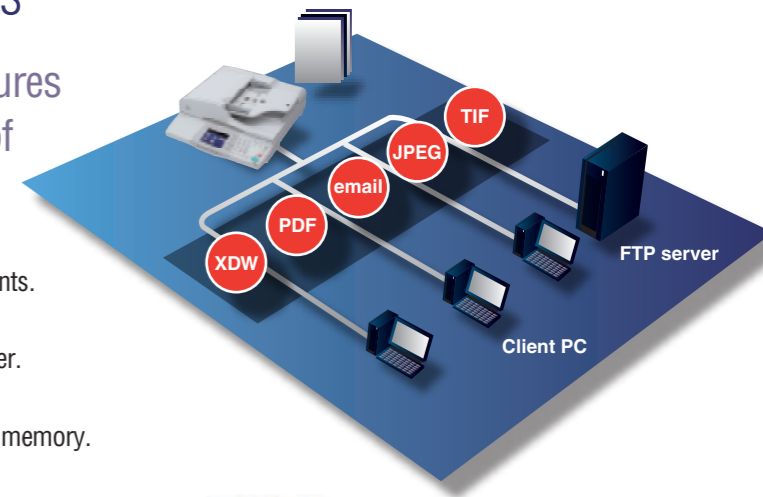
Scan documents then send directly to email accounts.

Scan to an FTP server

Scan documents then send directly to an FTP server.

Scan to media

Save scanned documents to a server or USB flash memory.



Powerful, Easy-To-Use Interface

Large 4.7-inch, bright colour LCD

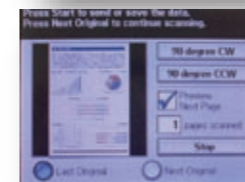
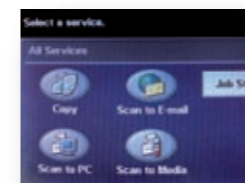
Shows all document information clearly.

Preview scanned images before saving and sending

You can inspect and modify documents before saving and sending, giving you powerful control over your documents.

Touch-screen for easy operation

The easy-to-use touch-screen control panel allows you to control all scanning operations from the scanner itself, eliminating the need of a PC.



The optional scanner stand installs over a DocuPrint* printer for easy access