

Environmentally-Friendly

The DocuPrint C2255 is manufactured using the Fuji Xerox trend-setting "Biomass-Plastic". The Biomass-Plastic contains a specified minimum quantity of organic resources like plants. And in this case, the organic resource is corn. In addition, these features and practices can be found in the DocuPrint C2255:

- Energy-saving sleep mode of 3W or less
- Lead-free and halogen-free construction
- International Energy Star certified
- Reduced CO₂ emissions of up to 35% in the manufacturing of EA-HG Toner
- Reduced CO₂ emissions of up to 16% in the manufacturing of Biomass-Plastic



4th Eco-Product Awards

DocuPrint C2250
(the Japanese version of **DocuPrint C2255**) won the **4th Eco-Products Awards in 2007**

The Minister of Economy, Trade and Industry (METI) Prize in the Eco-Products Category

Energy Conservation Prize

Fuji Xerox wins the Energy Conservation Prize for nine consecutive years in Japan



Configurations To Suit You



DocuPrint C2255 Printer Configurations

660 sheets

Standard Configuration
(560-sheet cassette and 100-sheet bypass tray*)

1,220 sheets

Standard Configuration
+
Single Tray Module
(560-sheet cassette and 100-sheet bypass tray + 560-sheet tray*)

1,220 sheets

Standard Configuration
+
Single Tray Module
+
Cabinet
(560-sheet cassette and 100-sheet bypass tray + 560-sheet tray + Cabinet*)

2,340 sheets

Standard Configuration
+
3 Tray Module
(560-sheet cassette and 100-sheet bypass tray + 560-sheet tray x 3*)

*64gsm Fuji Xerox paper

Specifications of DocuPrint C2255

Print Function

	A4 Colour and 88W	A3 Colour and 88W
Print Speed	Simplex Up to 25gpm	Up to 16gpm
Duplex	Up to 20gpm	Up to 9gpm
Print Resolution	600 × 600dpi; 1,200 × 1,200dpi; 1,200 × 2,400dpi	
First-page-out Time	Colour: ~8.3 seconds; Black & White: ~6.3 seconds	
Warm-up Time	~30 seconds	
Memory (std / max)	256MB / 1.5GB (512MB + 1GB)	
Processor	677MHz	
FDL	PCL XL, PCL5c, FX, PDF, XPS, HPGL, HPGL2, Adobe® PostScript® 3™, TIFF, ESC / P K	
HDD (optional)	40GB	
Connectivity	USB 2.0 x 2 Ports (Type B); Ethernet: 10 / 100BaseTX, EP-A; Parallel Port (optional)	
Operating System	Windows® 2000 / XP (32 / 64-bit) / Vista® (32 / 64-bit) / Server® 2003 (32 / 64-bit); Mac OS 8.6-9.2.2 / OS X (10.3.9-10.4.10); Linux® Red Hat® 8.0-9.0, NetWare® 3.X, 4.X, 5.X, 6, 6.5*, SUSE® 9.0, Citrix® Presentation Server™, SAP® R / 3®	
Input Paper Size	Standard Tray: A3, A4, B4, B5, A5, Legal 13 / 14, Letter, 140 × 182 – 297 × 432mm Bypass Tray: SRA3, A3, A4, A5, A6, B4, B5, B6, Legal 13 / 14, Letter, Postcard, C4 / C5 Envelope, 89 × 98 – 320 × 483mm, Banner Size: 320 × 1,200mm†	
Input Paper Weight	Standard Tray: Lightweight: 60gsm; Heavyweight: 256gsm Bypass Tray: Lightweight: 55gsm; Heavyweight: 256gsm	
Media Output Capacity	400 sheets (A4) / 200 sheets (A3) face down	
Monthly Duty Cycle	150,000 pages	
Dimensions (W x D x H)	640 × 665 × 399mm	
Weight	6.9kg	
Power Supply	220VAC – 240VAC, 50 / 60Hz (AP / Korea / China); 100VAC – 127VAC, 50 / 60Hz (Taiwan)	
Power Consumption	Printing: 1,450W; Standby: 100W; Sleep: 3W	
Environment	Temperature: 5°C – 32°C (when printing) Humidity: 15% – 85% (when printing) Altitude: 0 – 2,500m	
Noise Levels	Running: 54.5dB (A); Standby: 25.5dB (A)	
Warranty	Please check with your Fuji Xerox Printers reseller for more information	

* Requires optional driver with PostScript® version 5.0/7.0b, PostScript®
† Based on 64gsm Plain Paper.
* Network: It requires applying support pack 1.1 (or later provided by Novell®).
Note: Extend machine life up to 1,500,000 print volume requires periodic maintenance kits (200k and 480k yields) replacement at customer's expense.

Descriptions in this material, product specifications and/or appearances are subject to change without prior notice due to improvements. Please note that the product colour appears differently from the actual colour as a result of properties of paper or printing ink. Windows and Microsoft Office are registered trademarks of Microsoft Corporation. Novell is a registered trademark of Novell, Inc. in the United States, Australia, New Zealand and other countries. Apple Computer, Inc. (Apple) is a registered trademark of Apple Computer, Inc. in the United States and other countries. SAP is a registered trademark of SAP AG in Germany and several other countries. Hewlett-Packard Company (HP) is a trademark of the Japan Business Machine and Information System Industries Association (JBMA). Other company names or product names are registered trademarks or trademarks of each company.

Consumables

Black (up to 15,000 pages*)	CT201160
Cyan (up to 12,000 pages*)	CT201161
Magenta (up to 12,000 pages*)	CT201162
Yellow (up to 12,000 pages*)	CT201163
Drum Cartridge (up to 40,000 pages*)	CT350654
Waste Toner Bottle	CN240622
Periodic Replacement Item (Fuser Unit 220V (up to 100k pages))	EL300708

* A Drum Cartridge is required for each CMYK color.
† Yield is an approximation with 50% (A4) / 10% (A3) cover. Actual yields vary considerably based on print coverage and other factors.
* Actual yields based on an average job size of 3 pages letter / A4 size. Yield will vary based on job run length, media size, media type and orientation.
Note: DocuPrint C2255 is shipped with standard toners of 15,000 pages for Black and 12,000 pages for Cyan, Magenta & Yellow.

Accessories (Optional)

Single Tray Module (560 sheets x 1 Feeder Unit)†	A3, A4, A5, 140 × 182 – 320 × 457mm; Lightweight: 60gsm; Heavyweight: 256gsm	EL300697
3 Tray Module (560 sheets x 3 Feeder Unit)†	A3, A4, A5, 140 × 182 – 297 × 432mm; Lightweight: 60gsm; Heavyweight: 256gsm	EL300696
Duplex Unit	SRA3, A3, A4, A5, B4, B5, Legal 13 / 14, Letter, C4 / C5 Envelope, 128 × 140 – 320 × 457mm; Lightweight: 55gsm; Heavyweight: 169gsm	EL300698
Cabinet		EL300699
Costar Base		EL300700
Parallel Port (Mini Centronics, 36pin Amphenol Connector x 1)		EL300703
Hard Disk Unit (40GB or larger)		EL300704
Feature Enhance Kit†	Y / C / M Front ROM†	EL300701
	Evolve Front ROM†	EL300710
	256MB Memory	EL300705
	512MB Memory	EL300706
	1.5GB Memory	EL300707

* Based on 64gsm Plain Paper.
† Requires additional 256MB RAM or more.
* Requires optional hard disk and additional 256MB RAM or more.
† Cannot be installed automatically with "Feature Enhance Kit".



®Reproduction Prohibitions: Please note that reproduction of the following is prohibited by law: Domestic and overseas bank notes and coins, government issued securities, national bonds and local bond certificates, United Nations stamps and post marks, Certificate stamps issued by law. The reproduction of works for copyright purposes (literary works, musical works, paintings, engravings, maps, cinematographic works, photographic works, etc.) is prohibited except when they are reproduced personally at home or within limited range according to the above. This product is equipped with an anti-counterfeit feature. This feature is not intended to prevent illegal reproduction. Be extremely careful about the management of equipment used.

⚠ For Your Safe Use: Before using the product, read the Instruction Manual carefully for proper use. Use the product with an appropriate adequate power source and voltage displayed. Be sure to establish ground. In the case of a failure or short circuit, an electric shock may result.



DocuPrint C2255



DocuPrint C2255 Color Printer

Another Dimension in Color Printing



For more information or for your nearest authorised Fuji Xerox Printers reseller, visit our website or call:

Australia 1300 793 769
New Zealand 0800 993 769

www.fujixeroxprinters.com.au
www.fujixeroxprinters.co.nz

*XEROX, and the sphere of connectivity design are trademarks or registered trademarks of Xerox Corporation.

Innovative A3 Colour Printer with Cutting-Edge Self-Scanning LED Print Technology capable of 1,200 x 2,400dpi output!



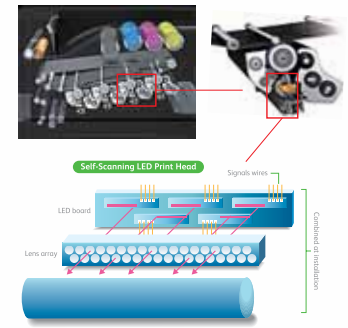
For those who demand exceptional colour reproduction and uncompromising performance, Fuji Xerox has the answer for you – the DocuPrint C2255 Colour Printer. It is a scalable colour printer with cutting-edge Self-Scanning LED Print technology able to print up to SRA3 and banner size. The DocuPrint C2255 is also networkable for various environments and comes with built-in and optional security features for top-notch confidentiality. And being environmentally responsible, the DocuPrint C2255 is safe and ecologically designed. So go beyond laser and let the DocuPrint C2255 dazzle you with its performance.



Fuji Xerox Self-Scanning LED Print Technology

Self-Scanning LED Print technology utilises a print head that creates an image on the print drum using LEDs (Light Emitting Diodes) as the light source. The light from the LEDs are directed through a lens array which forms the image document on the drum. However, the DocuPrint C2255 has five features, combining Advanced Self-Scanning LED Print Technology and Superior Imaging Technology, to ensure its high quality 1,200 x 2,400dpi output consistently:

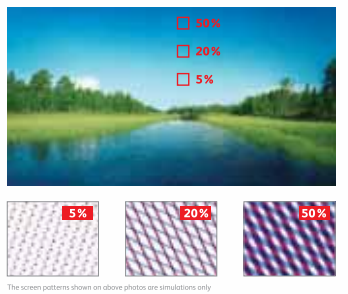
- (i) **1,200dpi Self-Scanning LED chips**
This assures high quality printing with 14,592 emitting points comprising of 256 dots x 57 chips.
- (ii) **Newly designed lens**
The optically precise lenses produce highly accurate images on the drum.
- (iii) **Full-featured ASIC Driver**
The small, intelligent ASIC driver assures precise control of the Self-Scanning LED chips.



(iv) **Image enhancement processing**
Images are scanned in two directions (rather than one) on a finer matrix than with conventional technology. This produces smoother lines, especially those at slight angles, for razor-sharp text and graphics.



(v) **MACS (Micro Accurate Control Screen) digital screening**
It uses Fuji Xerox HQ digital screen technology (normally found only in high-end printers) which controls pixel production based on image density. This results in smooth gradation and excellent highlight reproduction.



The screen patterns shown on above photos are simulations only

In addition, other benefits of the DocuPrint C2255 over conventional printers are that there are fewer moving parts for better efficiency. It is compact with shorter optical path and smaller light emitting unit. It is also silent, more reliable and offer lower power consumption.

Cutting Edge Security

The DocuPrint C2255 ensures that your confidential documents remain confidential. Its built-in and optional security features mean you can always print with total peace of mind. These include:

- IPv6+IPSec, IEEE802.1X authentication* and SNMPv3 compatible for TCP / IP
- IPP+SSL security print
- Hard disk overwrite*
- Print user control
- Control panel lock
- Hidden Universally Unique Identifier (UUID) mark to detect copied documents*
- Secure Watermark to protect hard copy*

* Require optional hard disk and additional 256MB RAM or more
* Require optional Feature Enhance Kit, hard disk and additional 256MB RAM or more

Out-of-Box Capability for Enterprise Applications

- SAP® R / 3®**
- Customisable ApeosWare device type for duplex printing and input / output trays**
 - PostScript and PCL barcode printing
 - Unicode printing**
 - Citrix printing via Print Utility for Citrix XenApp**
- Citrix® Presentation Server**
- Access all printer features (i.e. duplex printing, N-Up, tray select, etc.)

** Available via download from <http://www.fujixerox.com>
** Requires the Multi Language Font Kit (EC101145), optional hard disk and additional 256MB RAM or more

High On Speed

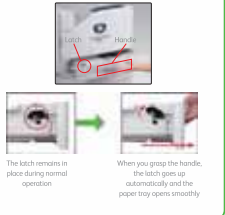
- 25ppm colour and black-&-white output
- Fast warm-up time of less than 30 seconds
- Fast colour first-page-out time <8.3 seconds
- 667MHz high-speed CPU
- 256MB RAM expandable to 1.5GB
- Shortened paper path via tandem + intermediate belt enables high-speed printing
- Optional Duplex printing to save time

High On Resolution

- 1,200 x 2,400dpi super high quality printing
- Accurate highlight coverage improves print stability in different environments
- Improved EA-HG Toner produces beautiful and vivid images

Easy-To-Use

- Bright LCD control panel can display in four languages
- Intuitive easy operation
- Front access for easy consumable replacement
- Automatically switches to black & white when colour toner runs out
- Light-weight paper tray opens easily



The latch remains in place during normal operation
When you grasp the handle, the latch opens automatically and the paper tray opens smoothly