

**DocuPrint C3055/C3055 DX  
PostScript® User Guide**

Adobe, Adobe Type Connection, Adobe Type Manager, Acrobat, PostScript 3, and the PostScript logo are either registered trademarks or trademarks of Adobe Systems Incorporated in the United States and/or other countries.

Microsoft, Windows, Windows NT, and Windows Server are either registered trademarks or trademarks of Microsoft Corporation in the United States and/or other countries.

Permission has been obtained from Microsoft Corporation for use of software screen shots.

Macintosh, Mac OS, AppleTalk, EtherTalk, Apple, and TrueType are trademarks of Apple Computer, Inc., registered in the U.S. and other countries.

The AppleTalk protocols and computer programs are licenced by Apple Computer, Inc.

UNIX is a trademark of X/Open Company Ltd.

All product/brand names are trademarks or registered trademarks of the respective holders.

#### Important

1. This manual is copyrighted with all rights reserved. Under the copyright laws, this manual may not be copied or modified in whole or part, without the written consent of the publisher.
2. Parts of this manual are subject to change without prior notice.
3. We welcome any comments on ambiguities, errors, omissions, or missing pages.
4. Never attempt any procedure on the machine that is not specifically described in this manual. Unauthorized operation can cause faults or accidents. Fuji Xerox is not liable for any problems resulting from unauthorized operation of the equipment.

Xerox, The Document Company, and the digital X are registered trademarks of Xerox Corporation.

All Xerox and Fuji Xerox product names are either registered trademarks or trademarks of Xerox Corporation and Fuji Xerox Co., Ltd.

# Contents

Preface .....	6
Types of Manuals .....	7
Conventions .....	8
Organization .....	9
<b>1 Installation and Configuration on Windows 95/98/Me .....</b>	<b>11</b>
About the Software .....	11
Included Software .....	11
Hardware/Software Requirements .....	12
Computer System .....	12
Basic Software .....	12
Installing the Print Driver .....	12
Installation Procedure .....	12
When [Disagree] is Clicked in the License Agreement .....	17
Configuring the Print Driver .....	18
[Configuration] Tab .....	18
Setting Items .....	19
[Options] Tab .....	22
Setting Items .....	22
[Color Settings] Tab .....	23
Setting Items .....	23
[Output Settings] Tab .....	25
Setting Items .....	25
Using the Online Help .....	27
<b>2 Installation and Configuration on Windows NT 4.0.....</b>	<b>29</b>
About the Software .....	29
Included Software .....	29
Hardware/Software Requirements .....	30
Computer System .....	30
Basic Software .....	30
Installing the Print Driver .....	30
Installation Procedure .....	30
When [Disagree] is Clicked in the License Agreement .....	35
Configuring the Print Driver .....	36
[Device Settings] Tab .....	37
Setting Items .....	37
[Configuration] Tab .....	38
Setting Items .....	38
[Advanced] Tab .....	40
Setting Items .....	40
[Paper/Output] Tab .....	42

---

Setting Items .....	42
[Image Options] Tab .....	44
Setting Items .....	44
[Layout] Tab .....	46
Setting Items .....	46
Using the Online Help .....	47
<b>3 Installation and Configuration on Windows 2000/XP/ Windows Server 2003.....</b>	<b>49</b>
About the Software .....	49
Included Software .....	49
Hardware/Software Requirements .....	50
Computer System .....	50
Basic Software .....	50
Installing the Print Driver .....	50
Installation Procedure .....	50
Configuring the Print Driver .....	58
[Device Settings] Tab .....	59
Setting Items .....	59
[Configuration] Tab .....	60
Setting Items .....	60
[Advanced] Tab .....	62
Setting Items .....	62
[Paper/Output] Tab .....	64
Setting Items .....	64
[Image Options] Tab .....	66
Setting Items .....	66
[Layout] Tab .....	68
Setting Items .....	68
Using the Online Help .....	69
<b>4 Installation and Configuration on Mac OS.....</b>	<b>71</b>
About the Software .....	71
Included Software .....	71
Software/Hardware Requirements .....	72
Computer System .....	72
Print Driver .....	72
PPD Install/Plug-in Install Package .....	72
Utility .....	72
Installing the Print Driver .....	73
Installation Procedure (Mac OS 9.x or Earlier) .....	73
Configuring the PPD File (Mac OS 9.x or Earlier) .....	75
When Using EtherTalk .....	75
When Using the USB Port .....	77
Installation Procedure (Mac OS X) .....	79
Adding the Printer (Mac OS X) .....	81
Procedure (Mac OS X 10.1.5 through 10.3.9) .....	82
Procedure (Mac OS X 10.4) .....	84
About the Printer Options .....	85

---

Configuring the Print Driver .....	86
Installable Options .....	86
Procedure (Mac OS 9.x or Earlier) .....	86
Procedure (Mac OS X) .....	87
Setting Items .....	87
Printer Specific Options/Printer Features .....	88
Procedure (Mac OS 9.x or Earlier) .....	88
Procedure (Mac OS X) .....	89
Setting Items .....	90
Secure Print/Sample Print (Mac OS X 10.3.9/10.4 Only) .....	93
Setting Items .....	94
Job Accounting (Mac OS X 10.3.9/10.4 Only) .....	95
Setting items .....	95
Installing the Screen Fonts .....	96
Fuji Xerox PS Utility .....	98
Installing Fuji Xerox PS Utility .....	98
Uninstalling Fuji Xerox PS Utility .....	98
Using Fuji Xerox PS Utility .....	98
Activating Fuji Xerox PS Utility .....	99
Configuring the Printer Settings .....	99
<b>5 Barcode Settings .....</b>	<b>101</b>
About Barcodes .....	101
Font Types and Character Codes .....	101
Sample Program and Output Result .....	102
Character Code Tables .....	103
JAN Character Code Table .....	103
Code 39 Character Code Table .....	104
NW7 Character Code Table .....	105
Code 128 Character Code Table .....	106
ITF (Interleaved 2 of 5) Character Code Table .....	110
Customer Barcode Character Code Table .....	112
Barcode Sizes .....	113
<b>6 Appendix .....</b>	<b>115</b>
Available Fonts .....	115
136 European Fonts and Barcode/OCR-B Fonts .....	115
Notes and Restrictions .....	119
Print Driver .....	119
Troubleshooting .....	119
<b>7 Index.....</b>	<b>121</b>

---

## Preface

---

---

Thank you for purchasing the DocuPrint C3055/C3055 DX.

This guide describes the software included on the PostScript Driver Library CD-ROM and how to install and configure a PostScript print driver on your computer.

To get the most out of this printer and to use it effectively, please read this guide before use.

This guide assumes you are familiar with your operating system (Microsoft® Windows® or Macintosh® Mac OS®), network environment, and the basic operation of the printer.

Please refer to the User Guide for the PostScript-related menus that appear on the printer's control panel.

---

## Types of Manuals

---

The following manuals are available for this printer.

Setup Guide	Provides step-by-step instructions on how to set up your printer.
Quick Reference Guide	Provides information such as how to get ready to print, basic operating instructions, and troubleshooting tips. Refer to the User Guide for more details and information not covered in this guide.
User Guide (PDF)	Describes how to get ready to print and set various print features. It also covers the control panel menus, troubleshooting tips, and maintenance information. This guide is on the CD-ROM of the driver CD kit under [Model-specific Manual (PDF Document)].
CD-ROM Documentation (HTML)	Describes how to set up the printer's operating environment and to install a print driver and various Fuji Xerox software. This guide is on the CD-ROM of the driver CD kit.
Emulation Setting Guide (PDF)	Contains information about the ESC/P and PCL emulation modes. This guide is on the CD-ROM of the driver CD kit under [Model-specific Manual (PDF Document)].
PostScript User Guide (this guide)	Describes how to set up your printer as a PostScript® printer and the features that can be configured on your print driver. This guide is on the PostScript Driver Library CD-ROM.
Installation guides for the optional accessories	Most optional accessories (sold separately) come with installation guides.

**NOTE:** To view PDF files, you must have Adobe® Acrobat® Reader® or Adobe® Reader® installed on your computer. If you do not have it installed, install it from the CD-ROM of the driver CD kit.

---

## Conventions

---

---

The following conventions are used throughout this guide:

Square brackets ([ ])	Indicate the names of windows, dialog boxes, tabs, buttons, features, menus, setting items, and options that appear on your computer screen. For example: <ul style="list-style-type: none"><li>You can also browse the folder by clicking [Browse].</li></ul>
Less-than sign (>)	Indicates the hierarchies of the menus, setting items, and options that appear on your computer screen. For example: <ul style="list-style-type: none"><li>[RGB Color Temperature] can be configured when the [Paper/Output] tab &gt; [Output Color] is set to [Color].</li></ul>
Italic typeface	Indicates references to other sections and chapters. For example: <ul style="list-style-type: none"><li>See <i>Print Driver Properties on page 10</i> to configure the print driver.</li></ul>
Note	A statement that provides additional information. For example: <b>NOTE:</b> Clicking the [Defaults] button restores the defaults.



---

## Organization

---

This guide is organized into the following chapters. The summary of each chapter is as follows:

Chapter 1 Installation and Configuration on Windows 95/98/Me	Describes how to install and configure a PostScript print driver on Windows 95, Windows 98, or Windows Me.
Chapter 2 Installation and Configuration on NT 4.0	Describes how to install and configure a PostScript print driver on Windows NT 4.0.
Chapter 3 Installation and Configuration on Windows 2000/XP/ Windows Server 2003	Describes how to install and configure a PostScript print driver on Windows 2000, Windows XP, or Windows Server 2003.
Chapter 4 Installation and Configuration on Mac OS	Describes how to install and configure a PostScript print driver on Mac OS.
Chapter 5 Barcode Settings	Contains information such as the types of barcode supported by the printer, character codes assigned to barcode characters, and print sizes of barcodes.
Chapter 6 Appendix	Provides the list of PostScript fonts available on the printer. It also describes the notes and restrictions that apply to the printer.



# 1 Installation and Configuration on Windows 95/98/Me

This chapter includes the following information:

- About the Software
  - Included Software
  - Hardware/Software Requirements
- Installing the Print Driver
  - Installation Procedure
- Configuring the Print Driver
  - [Configuration] tab
  - [Options] tab
  - [Color Settings] tab
  - [Output Settings] tab
- Using the Online Help

## About the Software

---

---

This section describes the software for Windows 95, Windows 98, and Windows Me included on the PostScript Driver Library CD-ROM.

## Included Software

---

The following items are included on the CD-ROM and are required to print PostScript documents from Windows 95, Windows 98, or Windows Me.

**AdobePS 4.5.3 and PPD files** - Adobe PostScript print driver and PPD files for Windows 95, Windows 98, and Windows Me.

**ATM (Adobe Type Manager) ver. 4.0** - Allows you to install font typefaces and activate and manage fonts.

**Adobe Screen Fonts (TrueType/PostScript)** - Contains 136 screen fonts (19 TrueType fonts and 117 PostScript fonts) that are compatible with the printer fonts. Use ATM to install the PostScript fonts. To print these fonts, install AdobePS 4.5.3.

**Adobe Acrobat Reader** - Allows you to view and print PDF files on all major computing platforms.

**Readme.txt** - Describes the precautions that must be followed when using the print driver. Be sure to read this before using the print driver.

## Hardware/Software Requirements

---

The system requirements for the print driver for Windows 95, Windows 98, or Windows Me are as follows:

### Computer System

Personal computer on which Windows 95, Windows 98, or Windows Me is installed.

### Basic Software

Windows 95, Windows 98, or Windows Me

## Installing the Print Driver

---

---

This section describes how to install AdobePS 4.5.3 on Windows 95, Windows 98, or Windows Me.

The following procedure uses Windows 98 as an example.

**NOTE:** To cancel the installation, click [Cancel] in a dialog box displayed during the installation. To cancel the settings in a dialog box and return to the previous dialog box, click [Back].

## Installation Procedure

---

1. Start Windows 98.
2. From the [Start] menu, select [Settings] and click [Printers].
3. In the [Printers] window, double-click [Add Printer].
4. Click [Next].

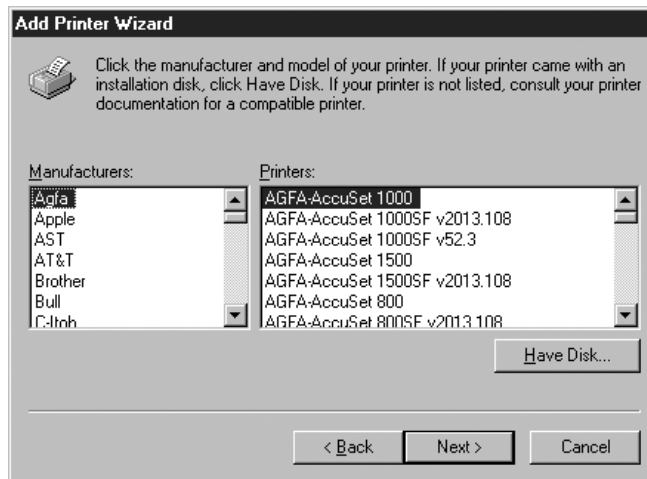


5. If the printer is directly connected to your computer, select [Local printer]. Otherwise, select [Network printer]. After selecting the connection method, select [Next]. In this example, we will select [Local printer].

**NOTE:** When [Network printer] is selected, specify the path to the printer in the network path or queue name box.

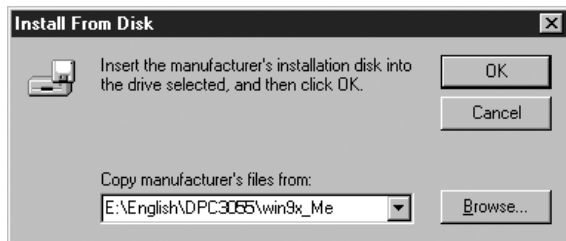


6. Insert the PostScript Driver Library CD-ROM into your CD-ROM drive.
7. Click [Have Disk].

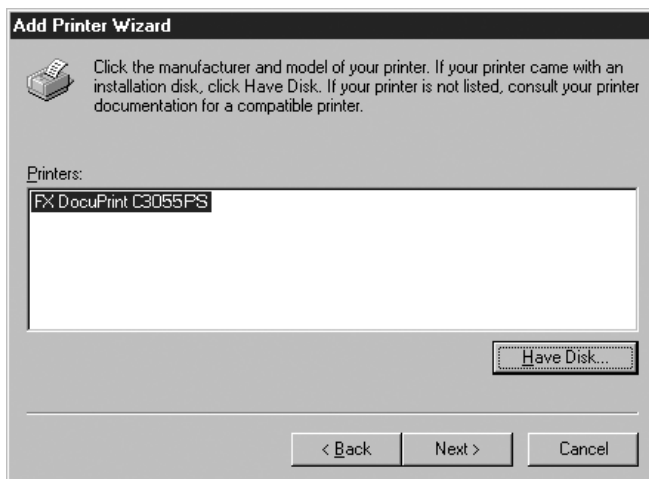


8. In the [Copy manufacturer's files from:] box, enter the drive in which the CD-ROM is located (example: "E:"). After the drive name, enter "\English\DPC3055\Win9x\_Me", and then click [OK].

**NOTE:** You can also browse the folder by clicking [Browse].



9. From [Printers], select the model of your printer, and then click [Next].



10. Select the port you want to use and click [Next].



11. Enter a name for your printer, specify whether to use the printer as the default printer, and then click [Next].



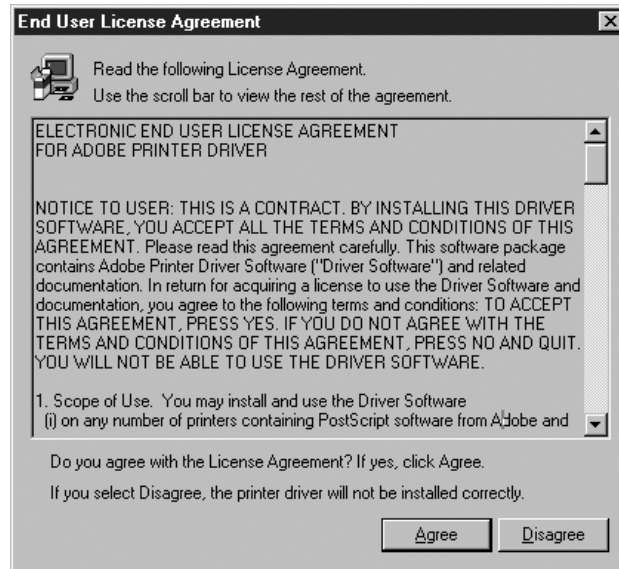
12. Specify whether to print a test page and click [Finish].



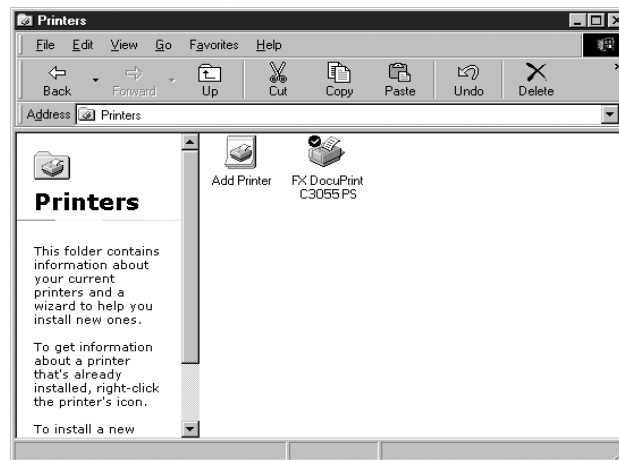
The installation begins.

13. Read [End User License Agreement]. If you accept the license agreement, click [Agree].

If you clicked [Disagree], see *When [Disagree] is Clicked in the License Agreement* on page 17.



14. Check if the test page is printed and the printer is added to the [Printers] window.



This completes the installation of the print driver. Remove the CD-ROM from the CD-ROM drive.

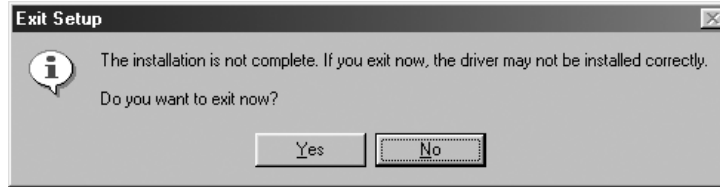
To configure the print driver, see *Configuring the Print Driver* on page 18.

Store the CD-ROM in a safe place.



## When [Disagree] is Clicked in the License Agreement

The following dialog box appears if you click [Disagree] in [End User License Agreement].



Click [No] to continue the installation.

Click [Yes] to cancel the installation. This operation adds the printer to the [Printers] window but does not correctly install the print driver.

To correctly install the print driver, right-click the printer icon added to the [Printer] window and click [Properties] in the displayed menu. The printer's properties dialog box appears. Display the [Re-installation] tab and follow the instructions on the tab.

When the re-installation is complete, go on to configure the print driver.

## Configuring the Print Driver

---

This section describes the following tabs in the print driver properties that are specific to this printer.

- [Configuration] tab
- [Options] tab
- [Color Settings] tab
- [Output Settings] tab

**NOTE:** See the online help for details about other tabs.

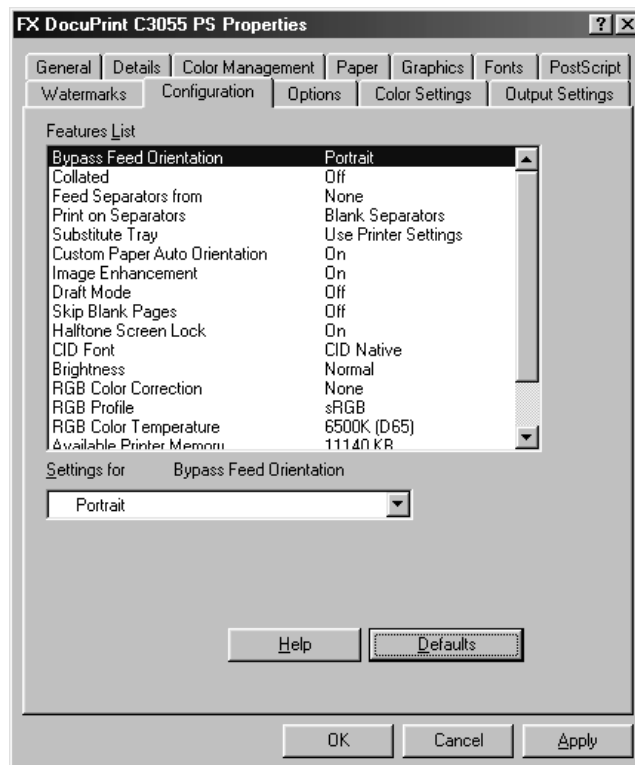
To view the print driver properties, select the printer icon in the [Printers] window, and then select [Properties] from the [File] menu.

### [Configuration] Tab

---

The following explains how to configure the [Configuration] tab.

Select an item you want to configure in [Features List] and select its option from the [Settings for] box.



**NOTE:** Clicking the [Defaults] button restores the defaults.

## Setting Items

**Bypass Feed Orientation** - Sets the orientation of the paper when printing from the bypass tray. When loading the paper with one of the short edges facing into the bypass tray, select [Portrait]. When loading the paper with one of the long edges facing into the bypass tray, select [Landscape]. If the orientation can only be one way or the other depending on the paper size, the actual orientation of the paper overrides this setting.

**Collated** - Sets whether or not to collate multiple-page documents.

**Feed Separators from** - Sets the paper tray for separators when using the Transparency Separators feature. Selecting [Auto] uses the paper tray selected on the printer.

**Print on Separators** - Sets whether or not to print on separators. Selecting [Off] inserts blank separators. Selecting [On] prints the same contents printed on transparencies to separators.

**Substitute Tray** - Sets what action to take when the [Paper] tab > [Paper source] is set to [Auto Select Tray] and the paper of the size you requested is not loaded in the printer.

**Use Printer Settings** - Uses the settings configured on the printer.

**Display Message** - Displays a message on the control panel that prompts you to load the paper. Your document will not be printed until you load the paper in the printer.

**Use Nearest Size (Adjust to Fit)** - Uses the paper of the nearest size and prints the document at 100% magnification or at a reduced magnification if necessary.

**Use Nearest Size (No Zoom)** - Uses the paper of the nearest size and prints the document at 100% magnification.

**Use Larger Size (Adjust to Fit)** - Uses the paper of a larger size and prints the document at 100% magnification or at a reduced magnification if necessary.

**Use Larger Size (No Zoom)** - Uses the paper of a larger size and prints the document at 100% magnification.

**Feed from Bypass Tray** - Feeds the paper from the bypass tray when it is not loaded in the paper trays.

**Custom Paper Auto Orientation** - If printing on user-defined paper, selecting [On] corrects the orientation of the paper. If your document was printed 90 degrees rotated on the paper, set this feature to [On].

**Image Enhancement** - Sets whether or not to use the Image Enhancement feature. Selecting [On] artificially enhances resolution by smoothing out the edges of images. Images (bitmaps) that consist of rough dots may not be reproduced with smooth gradations. In such case, set this feature to [Off]. Selecting [On] or [Off] does not affect print speed.

**Draft Mode** - Selecting [On] prints with less toner and thus the colors become lighter. Use this feature to save toner when printing documents that do not require high image quality.

**Skip Blank Pages** - Sets whether or not to skip blank pages during printing.

**Halftone Screen Lock** - Sets halftone screens. Selecting [On] prioritizes the settings on the printer over the settings on the application.

**CID Font** - Sets whether to use only CID fonts or both CID and OCF fonts. When using only CID fonts, select [CID Native]. When using both CID and OCF fonts, select [OCF Compatible].

**NOTE:** [CID Font] appears only when the Japanese font kit (optional) is installed.

**Brightness** - Sets the overall brightness of the output.

**RGB Color Correction** - Sets the color correction method for the RGB images on your document.

**Perceptual** - Optimizes the rendering of photographic images by preserving all tonal gradations.

**Saturation** - Optimizes the rendering of business graphics by preserving the saturation of colors.

**Relative Colorimetric** - Preserves in-gamut colors and represents out-of-gamut colors by the closest match.

**Absolute Colorimetric** - Does not map the white in the images to the white of the output paper. Depending on the [RGB Color Temperature] setting, the white in the images may be printed with a tint of color.

**RGB Profile** - Sets RGB profile. The [RGB Profile] setting will be applied in conjunction with the [RGB Color Correction] setting. [Adobe RGB (1998)] is the RGB profile of Adobe Systems Incorporated. [Adobe RGB (1998)] may not accurately reproduce the tones of highly saturated graphics.

**RGB Color Temperature** - Adjusts the color temperature of your monitor to match the on-screen colors to the printed output colors.

**5000K(D50)** - Colors become slightly more yellowish than [6500K (D65)].

**9300K** - Colors become slightly more bluish than [6500K (D65)].

**Available Printer Memory** - Sets the available printer memory in kilo-bytes. This setting does not need to be changed under normal circumstances. The value can be an integer between 0 and 200,000.

**Available Font Cache** - Sets the available font cache in kilo-bytes. This setting does not need to be changed under normal circumstances. The value can be an integer between 0 and 25,600.

**Account Mode** - Sets whether to allow all users or only the administrator to change the login settings.

**NOTE:** When the user who is logged onto the computer does not have access rights to the printer settings, [Account Mode] is grayed out and cannot be changed.

**Detailed User Settings** - This button appears when [Account Mode] is selected. Clicking the button displays the [Detailed User Settings] dialog box.

**Use Default User Settings** - Sets whether to use the login settings in this dialog box every time you request a print job.

- **Specify User ID** - Sets the method of specifying a user ID.

- **User ID** - Sets a user ID with up to 32 alphanumeric characters.

- **Password** - Sets the password for the user ID using 4 to 12 alphanumeric characters.

**Prompt User for Settings** - Selecting this check box displays the [Enter User Details] dialog box every time you request a print job. Your job will be printed if you enter the user ID and password in the dialog box.

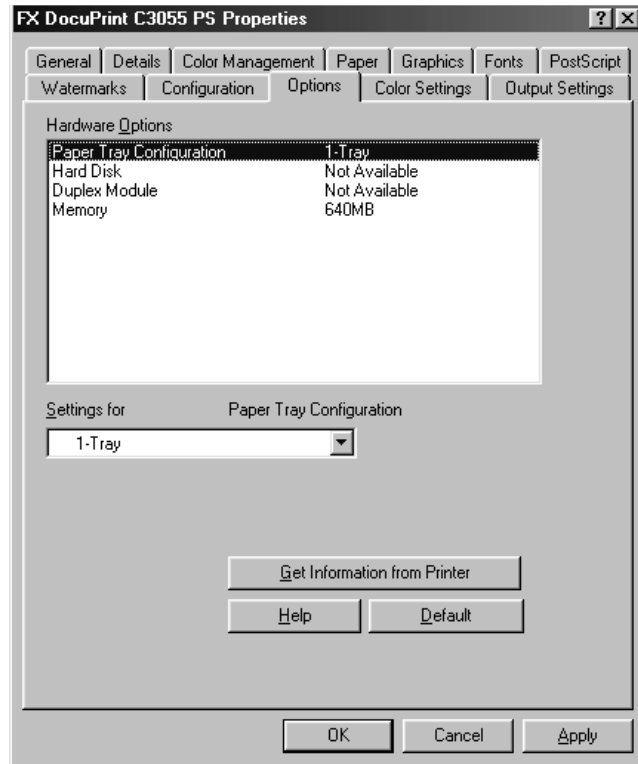
- **Display Previous User Details** - Selecting the check box saves the settings in the [Enter User Details] dialog box and displays them as the defaults the next time you display the dialog box.
- **Hide User ID(\*\*\*)** - Selecting the check box hides the user ID behind asterisks.

## [Options] Tab

---

The following explains how to configure the [Options] tab. You must correctly configure this tab to print properly.

Select an item you want to configure in [Hardware Options] and select its option from the [Settings for] box.



**NOTE:** Clicking the [Default] button restores the defaults.

### Setting Items

**Paper Tray Configuration** - Sets the paper tray configuration of the printer.

**Hard Disk** - Sets whether or not the hard disk is installed in the printer.

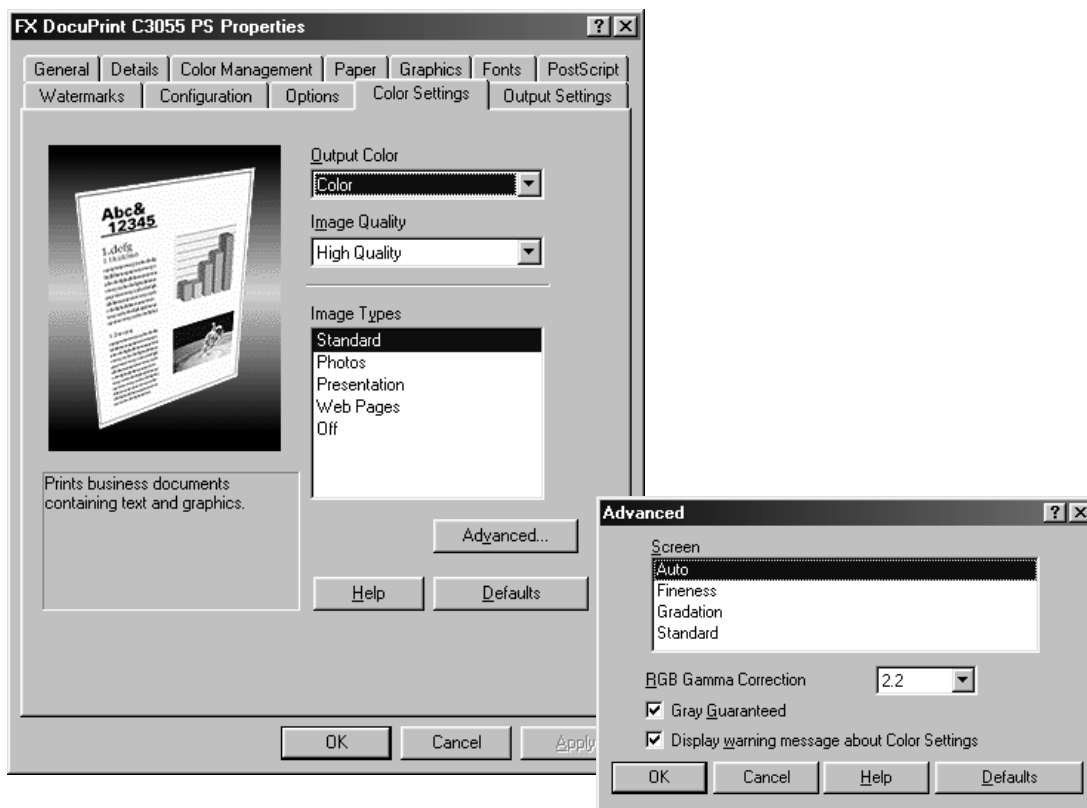
**Duplex Module** - Sets whether or not the duplex unit is installed in the printer.

**Memory** - Sets the memory capacity of the printer.

**NOTE:** The duplex unit comes standard on the DocuPrint C3055 DX. If your printer is C3055 DX, [Duplex Module] does not appear on the [Options] tab.

## [Color Settings] Tab

The following explains how to configure the [Color Settings] tab.



**NOTE:** Clicking the [Defaults] button restores the defaults.

### Setting Items

**Output Color** - Sets whether to print in color or in monochrome. [Color] uses all CMYK (cyan/magenta/yellow/black) toners when printing. [Black and White] uses only the K (black) toner.

**Image Quality** - Sets whether to print in [High Speed] or [High Quality] mode. [High Quality] may reduce print speed when compared to [High Speed].

**Image Types** - Sets the type of your document.

**Standard** - Optimizes the printing of business documents that consist of texts and graphs.

**Photos** - Suitable for printing photographic images and optimizes the reproduction of gradations. This is ideal for images represented in sRGB.

**Presentation** - Suitable for printing presentation materials that need vibrant colors.

**Web Pages** - Suitable for printing images displayed on your computer screen, such as web pages.

**Off** - Does not perform color correction.

**NOTE:** [Image Types] cannot be configured when [Output Color] is set to [Black and White].

**Advanced** - Displays the [Advanced] dialog box.

**Screen** - Adjusts the image quality of your document.

- **Auto** - Automatically adjusts the image quality based on the type of the document.
- **Fineness** - Optimizes the reproduction of texts and lines.
- **Gradation** - Optimizes the reproduction of charts and graphs.
- **Standard** - Optimizes the reproduction of photographic images.

**RGB Gamma Correction** - Adjusts the brightness of the RGB images on your document. Select a value depending on the monitor being used. The larger the value, the darker the output.

**NOTE:** [RGB Gamma Correction] cannot be configured when [Image Types] is set to [Off].

**Gray Guaranteed** - Selecting the check box prints achromatic colors in black. This setting does not apply to images.

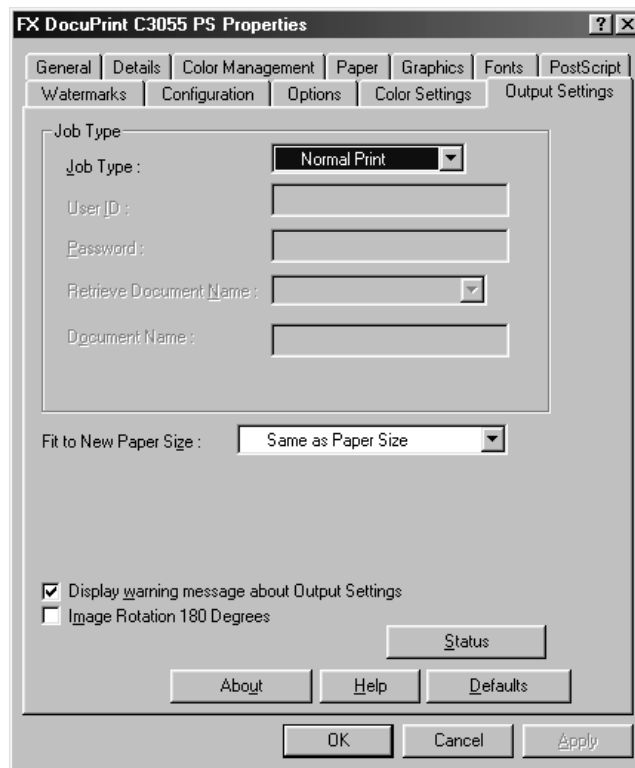
**Display warning message about Color Settings** - When the [Graphics] tab > [Image color matching] is set to [Allow image color matching] or [Always use image color matching], selecting the check box displays a dialog box that allows you to optimize the "Image Color Matching (ICM)" feature.

**NOTE:** On Windows 98/ME, [Image Color Matching] appears on the [Graphics] tab only when ICC profile is set on the [Color Settings] tab.



## [Output Settings] Tab

The following explains how to configure the [Output Settings] tab.



### Setting Items

**Job Type** - Sets the type of your print job to [Normal Print], [Secure Print], or [Sample Print].

**Normal Print** - Prints a job without using the Secure Print or Sample Print feature.

**Secure Print** - Temporarily stores a print job in the printer, rather than printing it immediately, until you manually start the printing from the control panel.

**Sample Print** - Allows you to print a proof copy of a multi-set job and prints the entire sets once the print result has been verified. If you set the print quantity to 1, this setting automatically changes to [Normal Print].

**NOTE:** To select [Secure Print], the [Options] tab > [Hard Disk] must be set to [Available]. To select [Sample Print], the [Options] tab > [Hard Disk] must be set to [Available] and the [Configuration] tab > [Collated] must be set to [On].

**User ID** - Sets the user ID for the Secure Print or Sample Print feature with up to 8 alphanumeric characters.

**Password** - Sets the password associated with the user ID for the Secure Print feature. The password can be up to 12 alphanumeric characters. Asterisks (\*\*\*) appear instead of text as you enter the password in this text box.

**Retrieve Document Name** - Sets the method of naming the document that will be stored in the printer using the Secure Print or Sample Print feature. [Auto Retrieve]

automatically retrieves the document name from the application from which the document will be printed. If the name exceeds 12 alphanumeric characters, only the first 12 characters will be valid.

**Document Name** - When [Retrieve Document Name] is set to [Enter Document Name], enter the document name with up to 12 alphanumeric characters.

**Fit to New Paper Size** - Sets the size of the output paper. The document will be automatically reduced/enlarged based on this setting and the [Paper size] setting on the [Paper] tab.

For example, the document will be enlarged if the [Paper] tab > [Paper size] is set to [B5] and the [Output Settings] tab > [Fit to New Paper Size] is set to [A4].

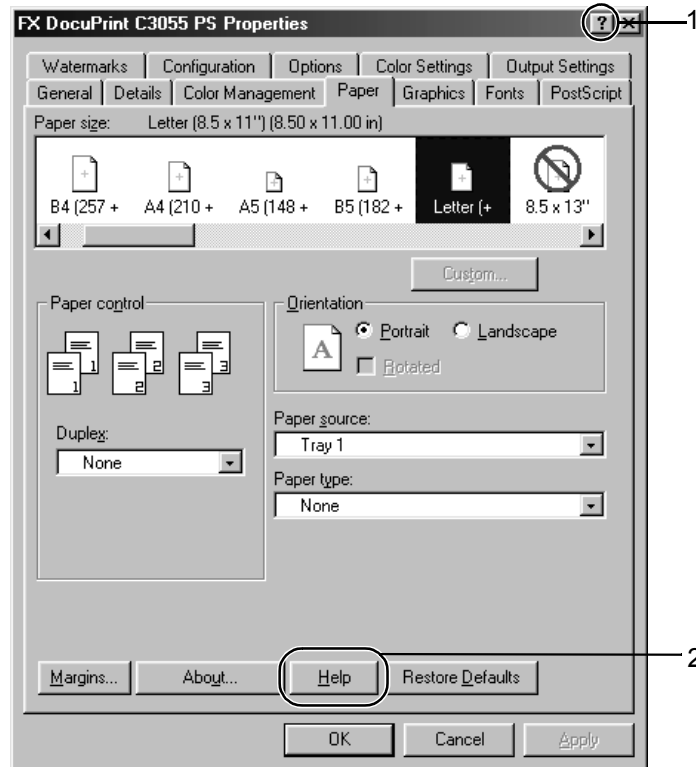
[Same as Paper Size] uses the paper size specified on the application.

**Display warning message about Output Settings** - When printing your document, the print driver checks if the [Fit to New Paper Size] setting is consistent with other settings. When there is a conflict, selecting this check box displays the [Conflicts] dialog box. Leaving the check box blank does not display the dialog box and automatically changes the [Fit to New Paper Size] setting to resolve the conflict.

**Image Rotation 180 Degrees** - Selecting the check box rotates the landscape or portrait pages in your document by 180 degrees. When the [Graphics] tab > [Layout] is set to an option other than [1-up], this rotates all pages by 180 degrees.

## Using the Online Help

This section describes how to use the online help.



1. Click the [?] button on the print driver dialog box. The [?] mark appears next to your mouse pointer. Then, click an item you need help with. The description of the item pops up. When you are finished reading the description, click anywhere on the pop-up window to close it.
2. Click the [Help] button on the print driver dialog box. The description of the tab that is currently displayed appears.



## 2 Installation and Configuration on Windows NT 4.0

This chapter contains the following information:

- About the Software
  - Included Software
  - Hardware/Software Requirements
- Installing the Print Driver
  - Installation Procedure
- Configuring the Print Driver
  - [Device Settings] tab
  - [Configuration] tab
  - [Advanced] tab
  - [Paper/Output] tab
  - [Image Options] tab
  - [Layout] tab
- Using the Online Help

### About the Software

---

This section describes the software for Windows NT 4.0 included on the PostScript Driver Library CD-ROM.

### Included Software

---

The following items are included on the CD-ROM and are required to print PostScript documents from Windows NT 4.0.

**AdobePS 5.2.2 and PPD files** - Adobe PostScript print driver and PPD files for Windows NT 4.0.

**ATM (Adobe Type Manager) ver. 4.0** - Allows you to install font typefaces and activate and manage fonts.

**Adobe Screen Fonts (TrueType/PostScript)** - Contains 136 screen fonts (19 TrueType fonts and 117 PostScript fonts) that are compatible with the printer fonts. Use ATM to install the PostScript fonts. To print these fonts, install AdobePS 5.2.2.

**Adobe Acrobat Reader** - Allows you to view and print PDF files on all major computing platforms.

**Readme.txt** - Describes the precautions that must be followed when using the print driver. Be sure to read this before using the print driver.

## **Hardware/Software Requirements**

---

The system requirements for the print driver for Windows NT 4.0 are as follows:

### **Computer System**

Personal computer on which Windows NT 4.0 is installed.

### **Basic Software**

- Windows NT Workstation 4.0
- Windows NT Server 4.0 (Service Pack 6a or later)

## **Installing the Print Driver**

---

---

This section describes how to install AdobePS 5.2.2 on Windows NT 4.0.

**NOTE:** To cancel the installation, click [Cancel] in a dialog box displayed during the installation. To cancel the settings in a dialog box and return to the previous dialog box, click [Back].

## **Installation Procedure**

---

1. Start Windows NT 4.0.

**NOTE:** When installing the print driver, make sure you are logged on as a Power User group member or as an administrator. Refer to the Windows NT 4.0 documentation for information about the Power User group.

2. From the [Start] menu, select [Settings] and click [Printers].
3. In the [Printer] window, double-click [Add Printer].

4. If the printer is directly connected to your computer or to a network in a TCP/IP (LPD) environment, select [My Computer]. Otherwise, select [Network printer server].

After selecting the connection method, select [Next].

In this example, we will select [My Computer].

**NOTE:** When [Network printer server] is selected, specify the target printer in the [Connect to Printer] dialog box.

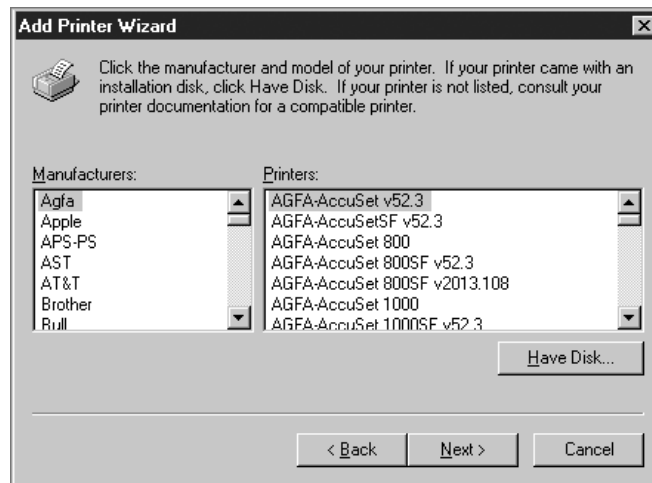


5. Select the port you want to use and click [Next].



6. Insert the PostScript Driver Library CD-ROM into your CD-ROM drive.

7. Click [Have Disk].



8. In the [Copy manufacturer's files from:] box, enter the drive in which the CD-ROM is located (example: "E:"). After the drive name, enter "\English\DPC3055\WinNT40", and then click [OK].

**NOTE:** You can also browse the folder by clicking [Browse].



9. From [Printers], select the model of your printer, and then click [Next].

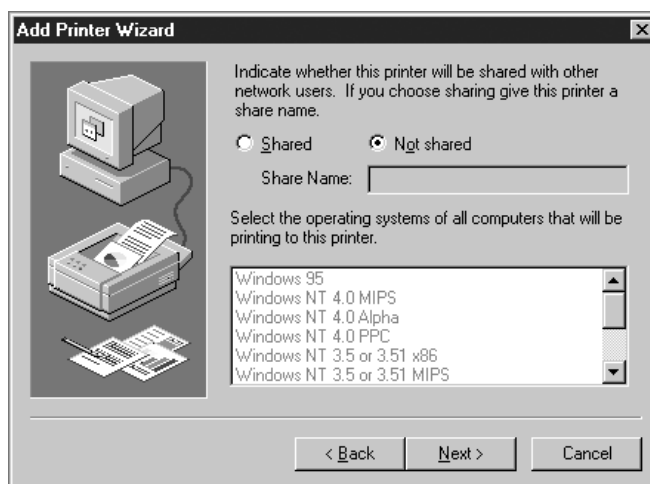




10. Enter a name for your printer, specify whether to use the printer as the default printer, and then click [Next].



11. Select [Not shared] and click [Next].



12. Specify whether to print a test page and click [Finish].



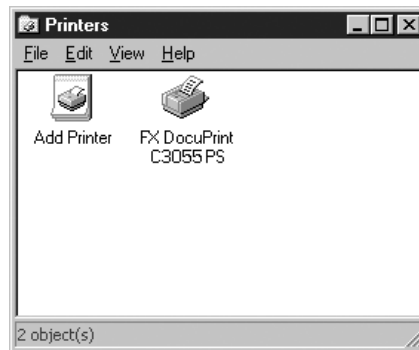
The installation begins.

13. Read [End User License Agreement]. If you accept the license agreement, click [Agree].

If you clicked [Disagree], see *When [Disagree] is Clicked in the License Agreement* on page 35.



14. Check if the test page is printed and the printer is added to the [Printers] window.



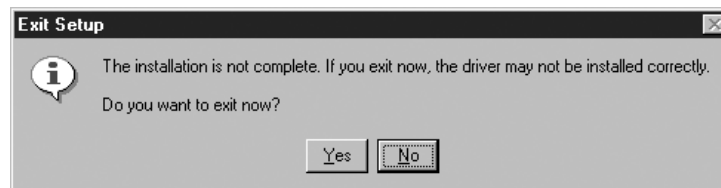
This completes the installation of the print driver. Remove the CD-ROM from the CD-ROM drive.

To configure the print driver, see *Configuring the Print Driver on page 36*.

Store the CD-ROM in a safe place.

### When [Disagree] is Clicked in the License Agreement

The following dialog box appears if you click [Disagree] in [End User License Agreement].



Click [No] to return to Step 13 and continue the installation.

Click [Yes] to cancel the installation. This operation adds the printer to the [Printers] window but does not correctly install the print driver.

To correctly install the print driver, select the printer icon added to the [Printers] window and select [Properties] from the [File] menu. The printer's properties dialog box appears. Display the [Re-installation] tab and follow the instructions on the tab.

When the re-installation is complete, go on to configure the print driver.

## **Configuring the Print Driver**

---

---

This section describes the following tabs in the print driver properties that are specific to this printer.

- [Device Settings] tab
- [Configuration] tab
- [Advanced] tab
- [Paper/Output] tab
- [Image Options] tab
- [Layout] tab

**NOTE:** See the online help for details about other tabs.

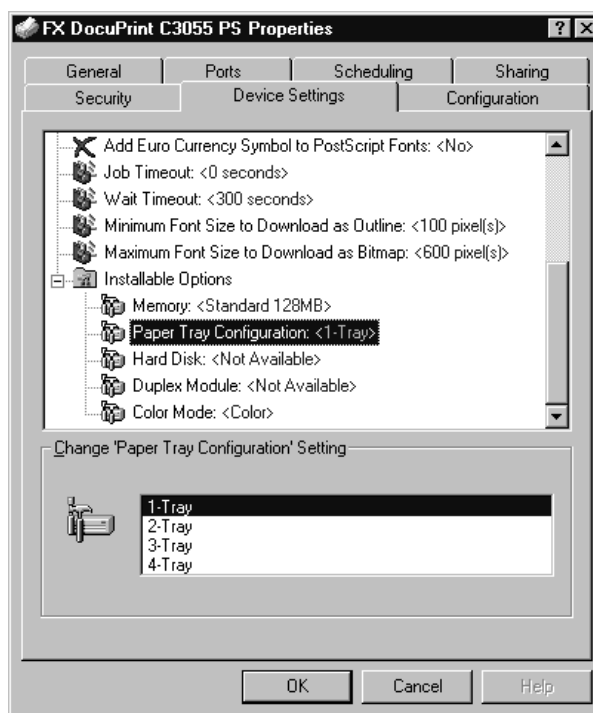
To view the [Device Settings] or [Configuration] tab, select the printer icon in the [Printers] window, and then select [Properties] from the [File] menu.

To view the [Advanced], [Paper/Output], [Image Options], or [Layout] tab, select the printer icon in the [Printers] window, and then select [Document Defaults] from the [File] menu.

## [Device Settings] Tab

The following explains [Installable Options] on the [Device Settings] tab. You must correctly configure [Installable Options] to print properly.

Select the item you want to configure in [Installable Options] and select its option from [Change 'xxx' Setting] (where xxx is the name of the selected item).



### Setting Items

**Memory** - Sets the memory capacity of the printer.

**Paper Tray Configuration** - Sets the paper tray configuration of the printer.

**Hard Disk** - Sets whether or not the hard disk is installed in the printer.

**Duplex Module** - Sets whether or not the duplex unit is installed in the printer.

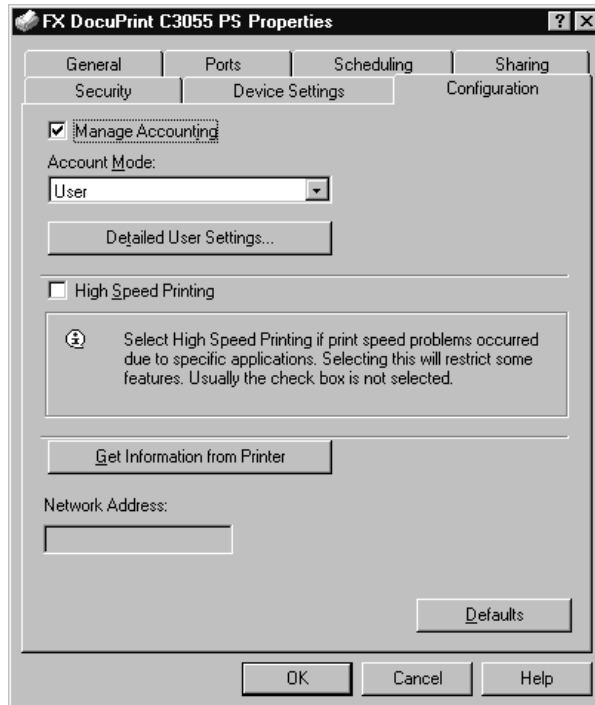
**Color Mode** - Selecting [Black] fixes the [Image Options] tab > [Output Color] to [Black and White] and disables [Color].

**NOTE:** The duplex unit comes standard on the DocuPrint C3055 DX. If your printer is C3055 DX, [Duplex Module] does not appear under [Installable Options].

## [Configuration] Tab

---

The following explains how to configure the [Configuration] tab.



**NOTE:** Clicking the [Defaults] button restores the defaults.

### Setting Items

**Manage Accounting** - Selecting the check box uses the user authentication (login) feature.

**Account Mode** - Sets whether to allow all users or only the administrator to change the login settings.

**NOTE:** If the user who is logged onto the computer does not have access rights to the printer settings, [Account Mode] is grayed out and cannot be changed. When the [High Speed Printing] check box is selected, [Account Mode] is set to [Administrator] and is grayed out. Clearing the check box allows you to change the setting.

**Detailed User Settings** - Displays the [Detailed User Settings] dialog box.

**Use Default User Settings** - Sets whether or not to use the login settings in this dialog box every time you request a print job.

- **Specify User ID** - Sets the method of specifying a user ID.
- **User ID** - Sets a user ID with up to 32 alphanumeric characters.
- **Password** - Sets the password for the user ID using 4 to 12 alphanumeric characters.

**Prompt User for Settings** - Selecting this check box displays the [Enter User Details] dialog box every time you request a print job. Your job will be printed if you enter the user ID and password in the dialog box.

**NOTE:** When the [High Print Speed] check box is selected, [Prompt User for Settings] is grayed out and cannot be changed.

- **Display Previous User Details** - Selecting the check box saves the settings in the [Enter User Details] dialog box and displays them as the defaults the next time you display the dialog box.
- **Hide User ID(\*\*\*)** - Selecting the check box hides the user ID behind asterisks.

**High Speed Printing** - Increases the print speed of applications that directly create PostScript files. This feature should not be used in normal circumstances.

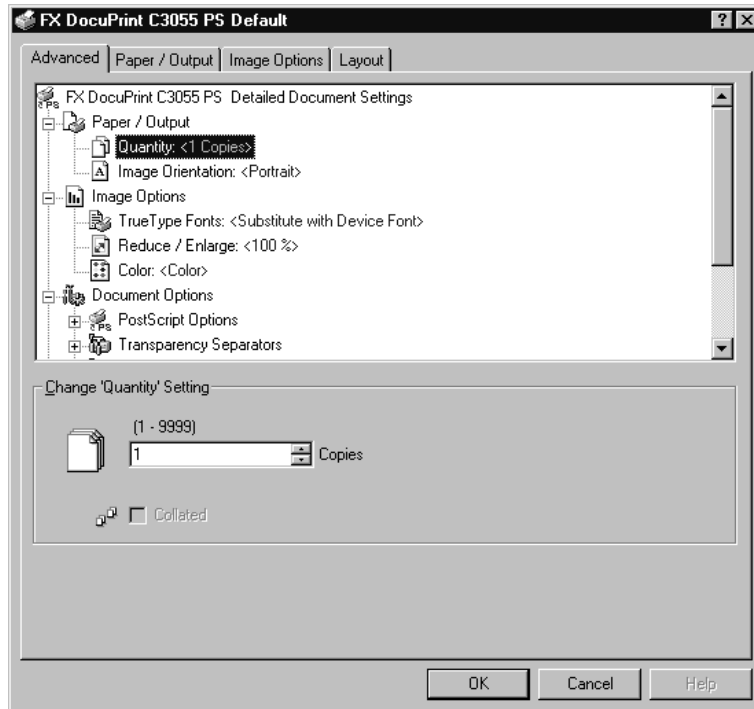
**Get Information from Printer** - If the printer is networked using TCP/IP or IPX, clicking [Get Information from Printer] checks the options installed on the printer and automatically updates [Installable Options] on the [Device Settings] tab. Clicking the button also obtains the printer's address and displays it in [Network Address].

When your printer is a local printer, [Get Information from Printer] cannot be used, and you must manually set the information on the print driver.  
To use this feature, you must enable the printer's SNMP port.

## [Advanced] Tab

---

The following explains how to configure the [Advanced] tab in the Default dialog box. Select an item you want to configure and select its option from [Change 'xxx' Setting] (where xxx is the name of the selected item).



## Setting Items

### Transparency Separators

**Feed Separators from** - Sets the paper tray for separators when using the Transparency Separators feature. Selecting [Auto] uses the paper tray selected on the printer.

**Print on Separators** - Sets whether or not to print on separators. Selecting [Off] inserts blank separators. Selecting [On] prints the same contents printed on transparencies to separators.

### Images

**Image Enhancement** - Sets whether or not to use the Image Enhancement feature. Selecting [On] artificially enhances resolution by smoothing out the edges of images. Images (bitmaps) that consist of rough dots may not be reproduced with smooth gradations. In such case, set this feature to [Off]. Selecting [On] or [Off] does not affect print speed.

**Gray Guaranteed** - Selecting the check box prints achromatic colors in black. This setting does not apply to images.

**Halftone Screen Lock** - Sets halftone screens. Selecting [On] prioritizes the settings on the printer over the settings on the application.



## Details

**Image Rotation 180 Degrees** - Selecting the check box rotates the landscape or portrait pages in your document by 180 degrees. When the [Layout] tab > [Multiple-Up] is set to an option other than [1 Page Up], this rotates all pages by 180 degrees.

**Skip Blank Pages** - Sets whether or not to skip blank pages during printing.

**Draft Mode** - Selecting [On] uses less toner and thus the colors become lighter. Use this feature to save toner when printing documents that do not require high image quality.

**Substitute Tray** - Sets what action to take when the paper of the size you requested is not loaded in the printer.

- **Use Printer Settings** - Uses the settings configured on the printer.
- **Display Message** - Displays a message on the control panel that prompts you to load the paper. Your document will not be printed until you load the paper in the printer.
- **Use Nearest Size (Adjust to Fit)** - Uses the paper of the nearest size and prints the document at 100% magnification or at a reduced magnification if necessary.
- **Use Nearest Size (No Zoom)** - Uses the paper of the nearest size and prints the document at 100% magnification.
- **Use Larger Size (Adjust to Fit)** - Uses the paper of a larger size and prints the document at 100% magnification or at a reduced magnification if necessary.
- **Use Larger Size (No Zoom)** - Uses the paper of a larger size and prints the document at 100% magnification.
- **Feed from Bypass Tray** - Feeds the paper from the bypass tray when it is not loaded in the paper trays.

**Custom Paper Auto Orientation** - If printing on user-defined paper, selecting [On] corrects the orientation of the paper. If your document was printed 90 degrees rotated on the paper, set this feature to [On].

**CID Font** - Sets whether to use only CID fonts or both CID and OCF fonts. When using only CID fonts, select [CID Native]. When using both CID and OCF fonts, select [OCF Compatible].

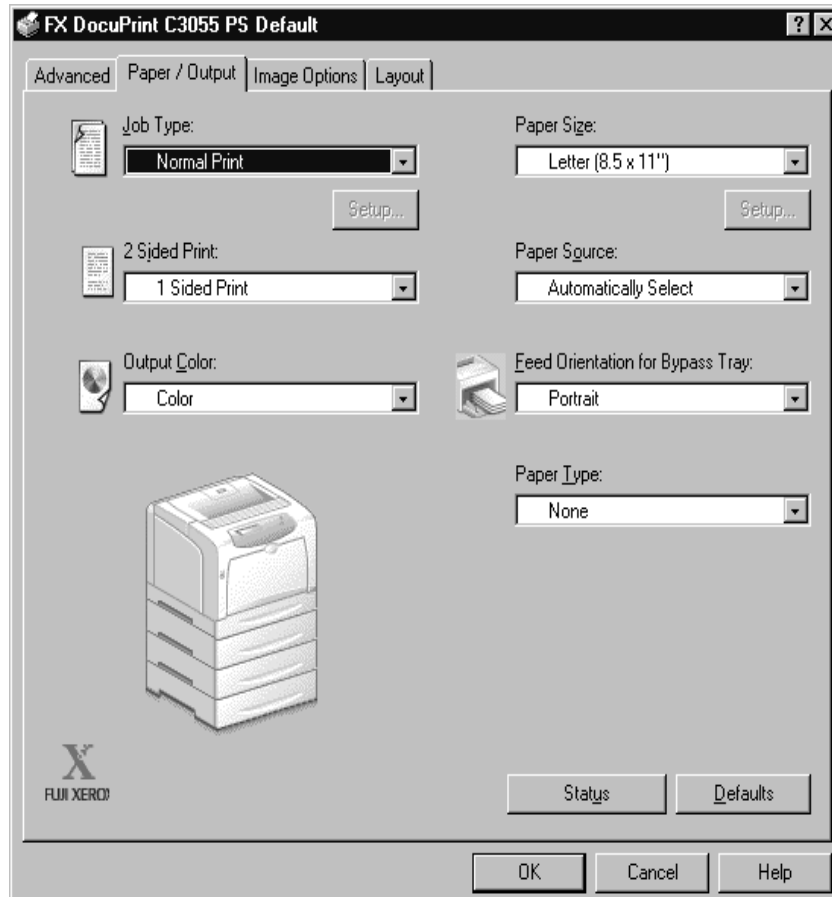
**NOTE:** [CID Font] appears only when the Japanese font kit (optional) is installed.

**About** - Displays the version information of the print driver.

**Help** - Displays the online help for the print driver.

## [Paper/Output] Tab

The following explains how to configure the [Paper/Output] tab in the Default dialog box.



### Setting Items

**Job Type** -Sets the type of your print job to [Normal Print], [Secure Print], or [Sample Print].

**Normal Print** - Prints a job without using the Secure Print or Sample Print feature.

**Secure Print** - Temporarily stores a print job in the printer, rather than printing it immediately, until you manually start the printing from the control panel.

**Sample Print** - Allows you to print a proof copy of a multi-set job and prints the entire sets once the print result has been verified. If you set the print quantity to 1, this setting automatically changes to [Normal Print].

**NOTE:** To select [Secure Print] and [Sample Print], the [Device Settings] tab > [Hard Disk] must be set to [Available].

**Setup** - This button becomes active when [Job Type] is set to [Secure Print] or [Sample Print]. Clicking the button displays the [Secure Print] or [Sample Print] dialog box.

**User ID** - Sets the user ID for the Secure Print or Sample Print feature with up to 8 alphanumeric characters.

**Password** - Sets the password associated with the user ID for the Secure Print feature. The password can be up to 12 alphanumeric characters. Asterisks (\*\*\*) appear instead of text as you enter the password in this text box.

**NOTE:** [Password] appears only on the [Secure Print] dialog box.

**Retrieve Document Name** - Sets the method of naming the document that will be stored in the printer using the Secure Print or Sample Print feature. [Auto Retrieve] automatically retrieves the document name from the application from which the document will be printed. If the name exceeds 12 alphanumeric characters, only the first 12 characters will be valid.

**Document Name** - When [Retrieve Document Name] is set to [Enter Document Name], enter the document name with up to 12 alphanumeric characters.

**2 Sided Print** - Sets whether to print your job 1-sided or 2-sided. When printing 2-sided, select [Flip on long edge] or [Flip on short edge].

**Output Color** - Sets whether to print in color or in monochrome. [Color] uses all CMYK (cyan/magenta/yellow/black) toners when printing. [Black and White] uses only the K (black) toner.

**Paper Size** - Sets the paper size of your document.

**Paper Source** - Sets the paper tray to be used for printing the document.

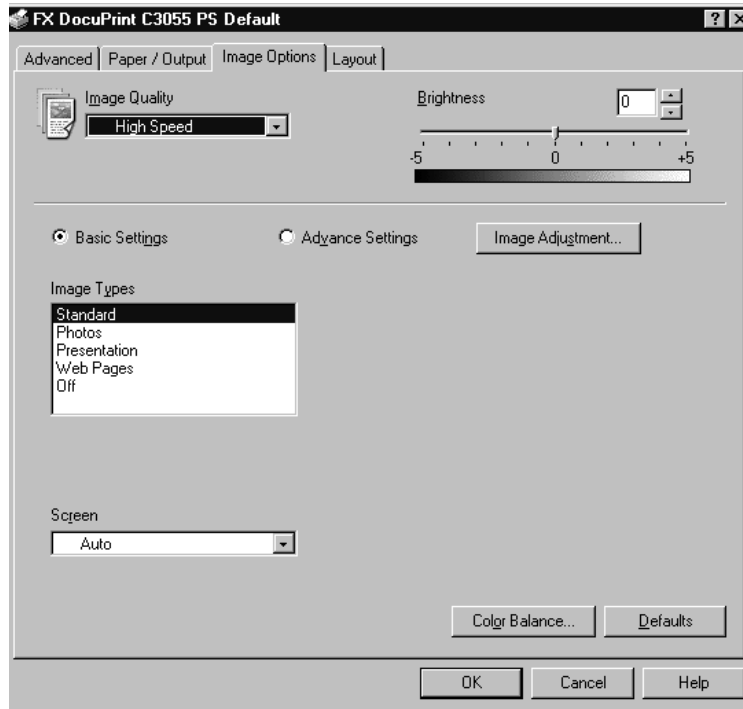
**Feed Orientation for Bypass Tray** - Sets the orientation of the paper when printing from the bypass tray. When loading the paper with one of the short edges facing into the bypass tray, select [Portrait]. When loading the paper with one of the long edges facing into the bypass tray, select [Landscape]. If the orientation can only be one way or the other depending on the paper size, the actual orientation of the paper overrides this setting.

**Paper Type** - Sets the type of paper to be used for printing the document. Selecting [None] uses the paper type selected on the printer.

## [Image Options] Tab

---

The following explains how to configure the [Image Options] tab in the Default dialog box.



### Setting Items

**Image Quality** - Sets whether to print in [High Speed] or [High Quality] mode.

**NOTE:** [High Quality] may reduce print speed when compared to [High Speed].

**Brightness** - Sets the overall brightness of the output.

**Basic Settings** - Allows you to configure the basic RGB color correction settings.

**Advanced Settings** - Allows you to configure the advanced RGB color correction settings.

**Image Adjustment** - Displays the [Image Adjustment] dialog box.

**RGB Color Correction** - Sets the color correction method for the RGB images on your document. You can configure this when [Advanced Settings] is selected.

- **Perceptual** - Optimizes the rendering of photographic images by preserving all tonal gradations.
- **Saturation** - Optimizes the rendering of business graphics by preserving the saturation of colors.
- **Relative Colorimetric** - Preserves in-gamut colors and represents out-of-gamut colors by the closest match.

- **Absolute Colorimetric** - Does not map the white in the images to the white of the output paper. Depending on the [RGB Color Temperature] setting, the white in the images may be printed with a tint of color.

**NOTE:** [RGB Color Correction] cannot be configured when the [Paper/Output] tab > [Output Color] is set to [Black and White].

**Enter RGB profile** - Sets RGB profile. The [Enter RGB profile] setting will be applied in conjunction with the [RGB Color Correction] setting. [Adobe RGB (1998)] is the RGB profile of Adobe Systems Incorporated. [Adobe RGB (1998)] may not accurately reproduce the tones of highly saturated graphics.

**NOTE:** [Enter RGB profile] can be configured only when the [Paper/Output] tab > [Output Color] is set to [Color] and the [Image Options] tab > [Advanced Settings] is selected.

**RGB Gamma Correction** - Adjusts the brightness of the RGB images on your document. Select a value depending on the monitor being used. The larger the value, the darker the output.

**NOTE:** [RGB Gamma Correction] can be configured only when the [Paper/Output] tab > [Output Color] is set to [Color].

**RGB Color Temperature** - Adjusts the color temperature of your monitor to match the on-screen colors to the printed output colors.

- **5000K(D50)** - Colors become slightly more yellowish than [6500K (D65)].
- **9300K** - Colors become slightly more bluish than [6500K (D65)].

**NOTE:** [RGB Color Temperature] can be configured only when the [Paper/Output] tab > [Output Color] is set to [Color] and the [Image Options] tab > [Advanced Settings] is selected.

**Screen** - Adjusts the image quality of your document.

**Auto** - Automatically adjusts the image quality based on the type of the document.

**Fineness** - Optimizes the reproduction of texts and lines.

**Standard** - Optimizes the reproduction of photographic images.

**Gradation** - Optimizes the reproduction of charts and graphs.

**Color Balance** - Displays the [Color Balance] dialog box.

**Adjust Color Balance** - Selecting the check box allows you to adjust the density of the CMYK (cyan/magenta/yellow/black) toners.

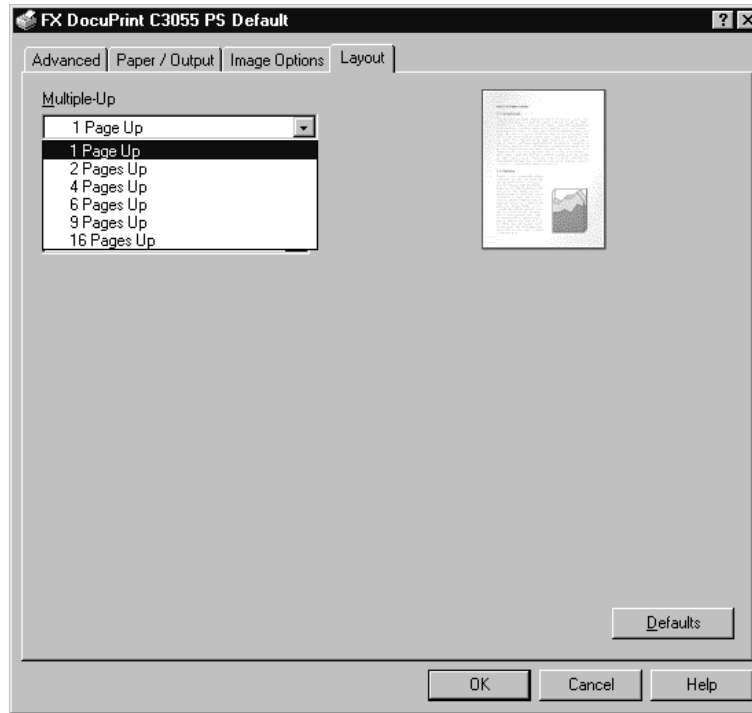
To adjust the density of a color, select the color from [Target Color] and specify its density for [Highlights], [Midtones], and [Shadows].

**NOTE:** Only [Black] can be adjusted when the [Paper/Output] tab > [Output Color] is set to [Black and White].

## [Layout] Tab

---

The following explains how to configure the [Layout] tab in the Default dialog box.



### Setting Items

**Multiple-Up** - Prints multiple pages onto one sheet of paper.

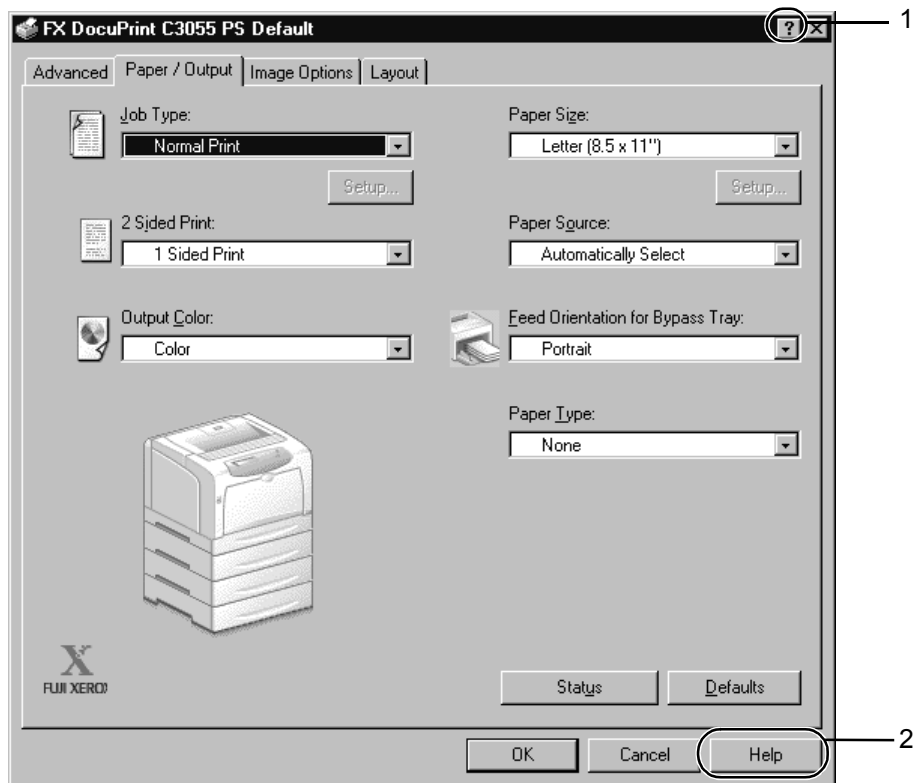
**NOTE:** [Multiple-Up] is displayed only when the [Device Settings] tab > [Duplex Module] is set to [Available] and the [Advanced] tab > [Enable advanced printing feature] is selected.

**Draw Outlines** - Prints each page with a frame when [Multiple-Up] is enabled.

**Fit to New Paper Size** - Sets the size of the output paper. When this setting is different from [Paper Size] on the [Paper/Output] tab, the document will be reduced /enlarged to fit to the paper size selected here.

## Using the Online Help

This section describes how to use the online help.



1. Click the [?] button on the print driver dialog box. The [?] mark appears next to your mouse pointer. Then, click an item you need help with. The description of the item pops up. When you are finished reading the description, click anywhere on the pop-up window to close it.
2. Click the [Help] button on the print driver dialog box. The description of the tab that is currently displayed appears.





# 3 Installation and Configuration on Windows 2000/XP/Windows Server 2003

This chapter contains the following information:

- About the Software
  - Included Software
  - Hardware/Software Requirements
- Installing the Print Driver
  - Installation Procedure
- Configuring the Print Driver
  - [Device Settings] tab
  - [Configuration] tab
  - [Advanced] tab
  - [Paper/Output] tab
  - [Image Options] tab
  - [Layout] tab
- Using the Online Help

## About the Software

---

This section describes the software for Windows 2000, Windows XP, and Windows Server 2003 included on the PostScript Driver Library CD-ROM.

## Included Software

---

The following items are included on the CD-ROM and are required to print PostScript documents from Windows 2000, Windows XP, or Windows Server 2003.

**Microsoft PScript 5 and PPD files** - Microsoft PScript print driver and PPD files for Windows 2000, Windows XP, and Windows Server 2003.

**Adobe Acrobat Reader** - Allows you to view and print PDF files on all major computing platforms.

**Readme.txt** - Describes the precautions that must be followed when using the print driver. Be sure to read this before using the print driver.

## **Hardware/Software Requirements**

---

The system requirements for the print driver for Windows 2000, Windows XP, or Windows Server 2003 are as follows:

### **Computer System**

Personal computer on which the Windows 2000, Windows XP, or Windows Server 2003 is installed.

### **Basic Software**

- Windows 2000 Professional
- Windows 2000 Server
- Windows 2000 Advanced Server
- Windows XP Professional Edition
- Windows XP Home Edition
- Windows Server 2003

## **Installing the Print Driver**

---

---

This section describes how to install MS PScript 5 on Windows 2000, Windows XP, or Windows Server 2003.

The following procedure uses Windows XP as an example.

**NOTE:** To cancel the installation, click [Cancel] in a dialog box displayed during the installation. To cancel the settings in a dialog box and return to the previous dialog box, click [Back].

## **Installation Procedure**

---

1. Start Windows XP.

**NOTE:** When installing the print driver, make sure you are logged on as a Power User group member or as an administrator. Refer to the Windows XP documentation for information about the Power User group.

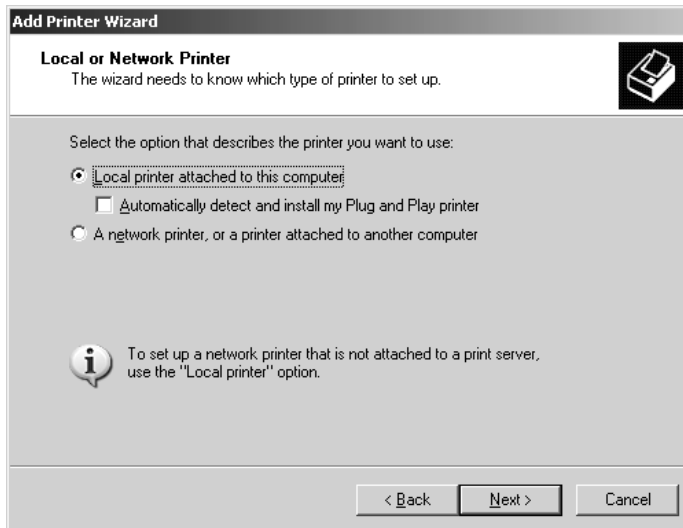
2. From the [Start] menu, select [Settings] and click [Printers and Faxes].
3. In the [Printers and Faxes] window, double-click [Add Printer].

4. Click [Next].

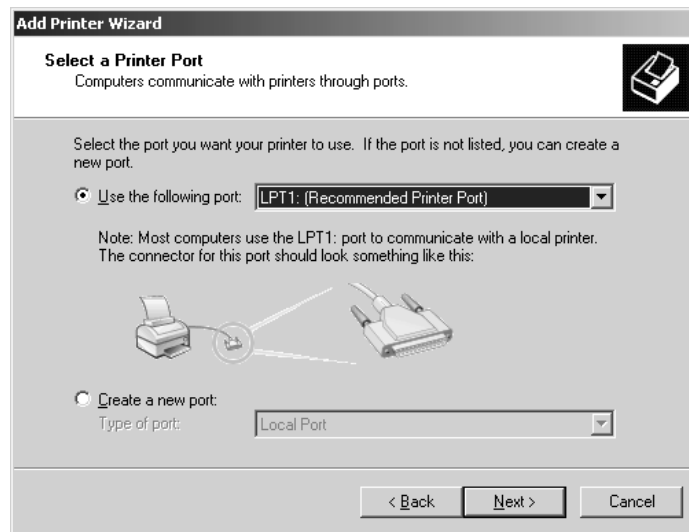


5. If the printer is directly connected to your computer or over a network in a TCP/IP (LPD) environment, select [Local printer attached to this computer]. Otherwise, select [A network printer, or a printer attached to another computer]. After selecting the connection method, click [Next]. In this example, we will select [Local printer attached to this computer].

**NOTE:** When [Local printer attached to this computer] is selected, clear the [Automatically detect and install my Plug and Play printer] check box. When [A network printer, or a printer attached to another computer] is selected, specify the printer in the [Connect to printer] dialog box.



6. Select the port you want to use and click [Next].

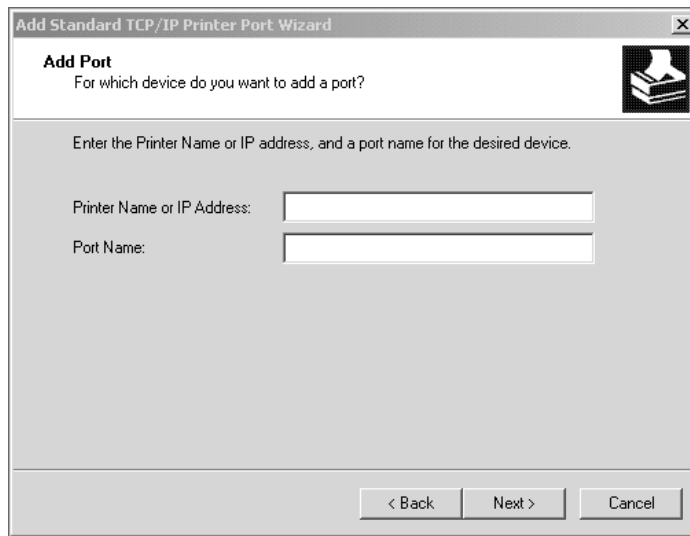


When the printer is installed in a TCP/IP(LPD) environment:

- 1) Click [Create a new port].
- 2) Select [Standard TCP/IP Port] from the [Type of port] list and click [Next].
- 3) Click [Next].

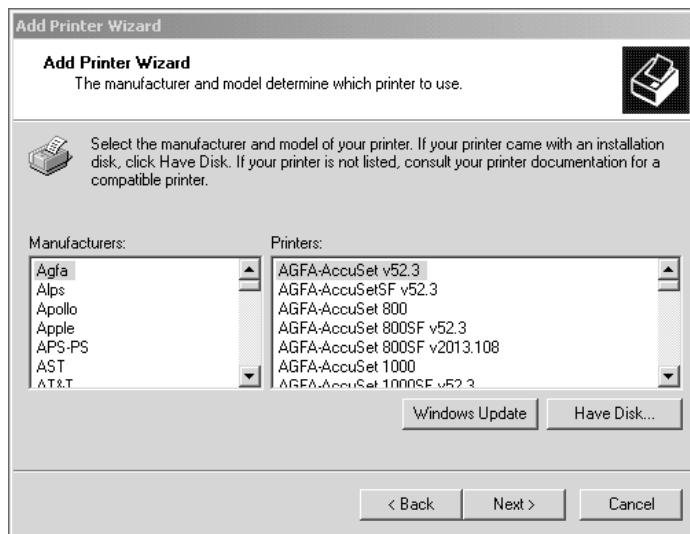


- 4) Enter the IP address of the printer in [Printer Name or IP Address] and click [Next].



Click [Finish] in the displayed dialog box.

7. Insert the PostScript Driver Library CD-ROM into your CD-ROM drive.
8. Click [Have Disk].

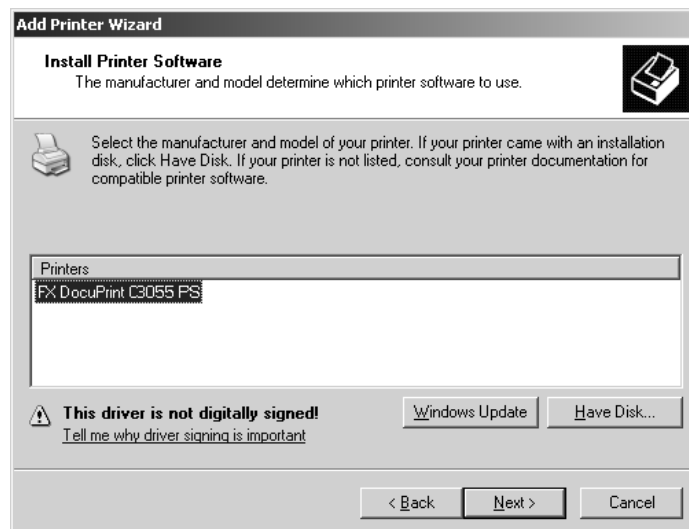


9. In the [Copy manufacturer's files from:] box, enter the drive in which the CD-ROM is located (example: "E:"). After the drive name, enter "\English\DPC3055\Win2K\_XP", and then click [OK].

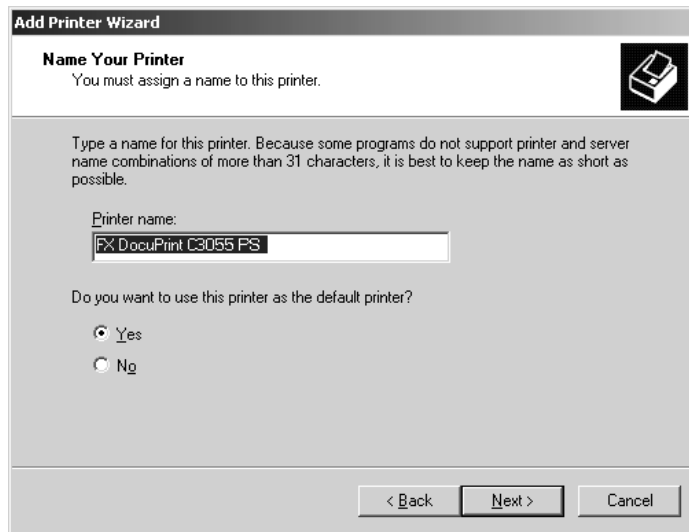
**NOTE:** You can also browse the folder by clicking [Browse].



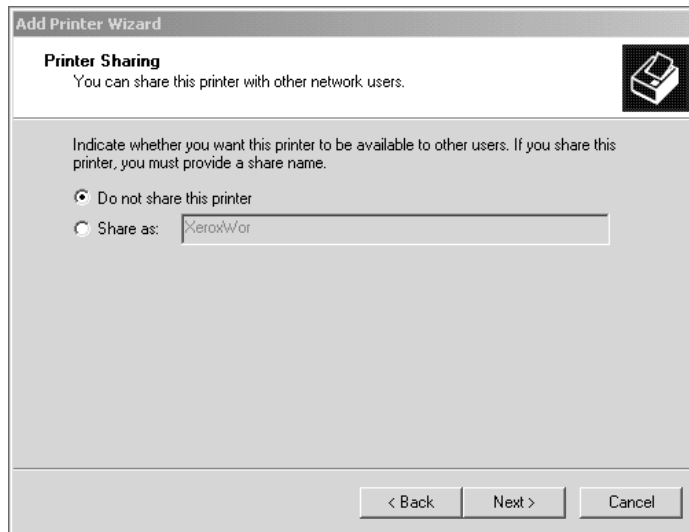
10. From [Printers], select the model of your printer, and then click [Next].



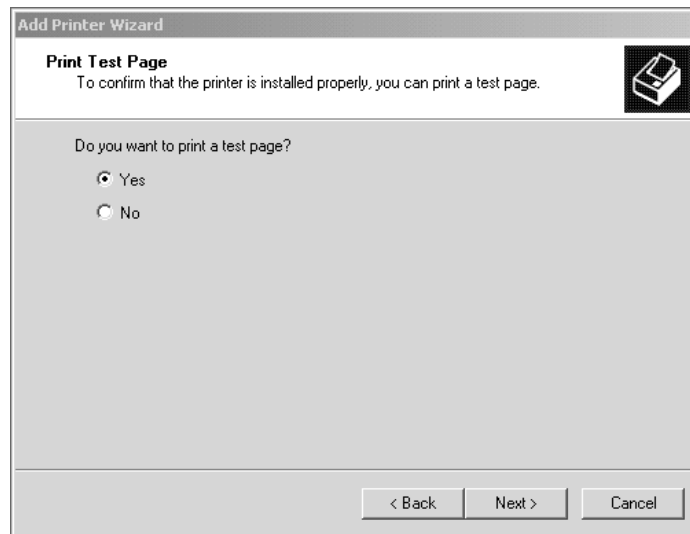
11. Enter a name for your printer, specify whether to use the printer as the default printer, and then click [Next].



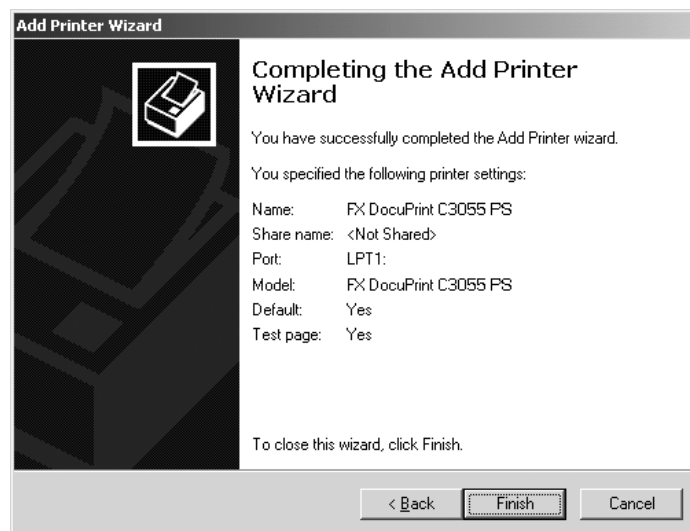
12. Select [Do not share this printer] and click [Next].



13. Specify whether to print a test page and click [Next].



14. Click [Finish].



**NOTE:** If the message "The software you are installing has not passed Windows Logo testing to verify its compatibility with Windows XP" appears, click [Continue Anyway] to continue the installation.

The installation begins.



**15.** Check if the printer is added to the [Printers] window.



This completes the installation of the print driver. Remove the CD-ROM from the CD-ROM drive.

To configure the print driver, see "*Configuring the Print Driver*" (P. 58).

Store the CD-ROM in a safe place.

## Configuring the Print Driver

---

---

This section describes the following tabs in the print driver properties that are specific to this printer.

- [Device Settings] tab
- [Configuration] tab
- [Advanced] tab
- [Paper/Output] tab
- [Image Options] tab
- [Layout] tab

**NOTE:** See the online help for details about other tabs.

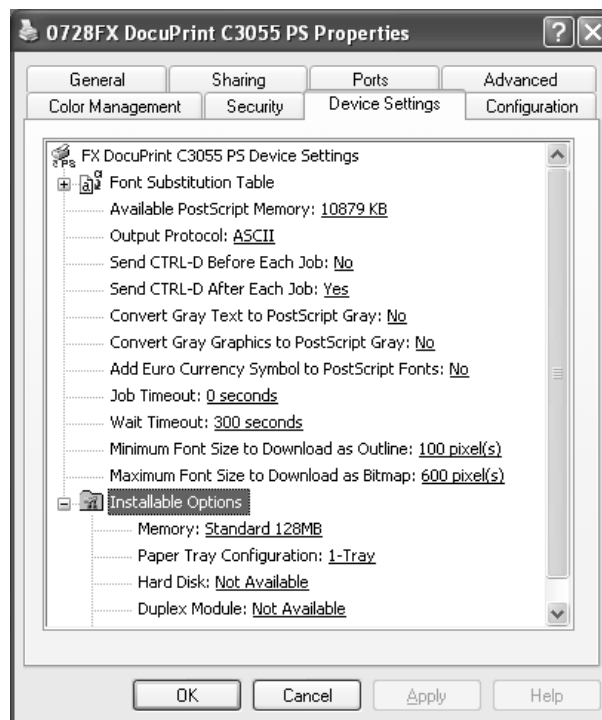
To view the [Device Settings] or [Configuration] tab, select the printer icon in the [Printers] window, and then click [Properties] from the [File] menu.

To view the [Advanced], [Paper/Output], [Image Options], or [Layout] tab, select the printer icon in the [Printers] window, and then click [Printing Preferences] from the [File] menu.

## [Device Settings] Tab

The following explains [Installable Options] on the [Device Settings] tab. You must correctly configure [Installable Options] to print properly.

Select an item you want to configure in [Installable Options] and select its option from the menu that appears on the right.



### Setting Items

**Memory** - Sets the memory capacity of the printer.

**Paper Tray Configuration** - Sets the paper tray configuration of the printer.

**Hard Disk** - Sets whether or not the hard disk is installed in the printer.

**Duplex Module** - Sets whether or not the duplex unit is installed in the printer.

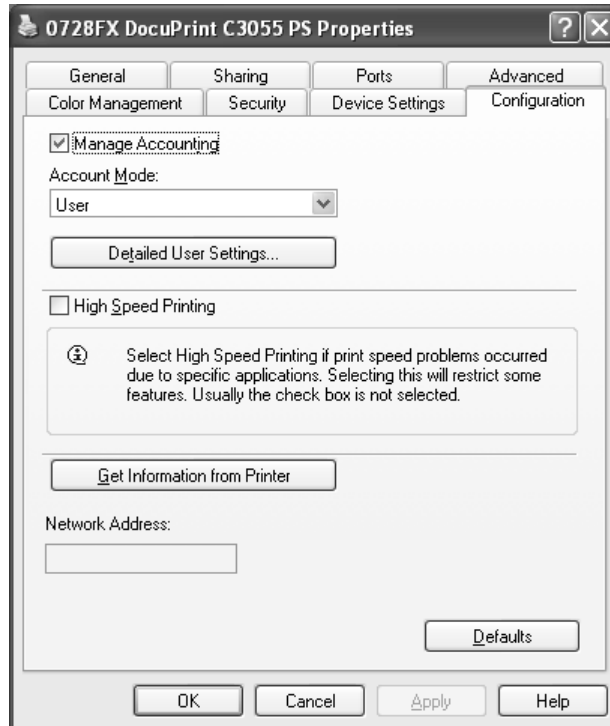
**Color Mode** - Selecting [Black] fixes the [Image Options] tab > [Output Color] to [Black and White] and disables [Color].

**NOTE:** The duplex unit comes standard on the DocuPrint C3055 DX. If your printer is C3055 DX, [Duplex Module] does not appear under [Installable Options].

## [Configuration] Tab

---

The following explains how to configure the [Configuration] tab.



**NOTE:** Clicking the [Defaults] button restores the defaults.

### Setting Items

**Manage Accounting** - Selecting the check box uses the user authentication (login) feature.

**Account Mode** - Sets whether to allow all users or only the administrator to change the login settings.

**NOTE:** If the user who is logged onto the computer does not have access rights to the printer settings, [Account Mode] is grayed out and cannot be changed. When the [High Speed Printing] check box is selected, [Account Mode] is set to [Administrator] and is grayed out. Clearing the check box allows you to change the setting.

**Detailed User Settings** - Displays the [Detailed User Settings] dialog box.

**Use Default User Settings** - Sets whether or not to use the login settings in this dialog box every time you request a print job.

- **Specify User ID** - Sets the method of specifying a user ID.
- **User ID** - Sets a user ID with up to 32 alphanumeric characters.
- **Password** - Sets the password for the user ID using 4 to 12 alphanumeric characters.

**Prompt User for Settings** - Selecting this check box displays the [Enter User Details] dialog box every time you request a print job. Your job will be printed if you enter the user ID and password in the dialog box.

**NOTE:** When the [High Print Speed] check box is selected, [Prompt User for Settings] is grayed out and cannot be changed.

- **Display Previous User Details** - Selecting the check box saves the settings in the [Enter User Details] dialog box and displays them as the defaults the next time you display the dialog box.
- **Hide User ID(\*\*\*)** - Selecting the check box hides the user ID behind asterisks.

**High Speed Printing** - Increases the print speed of applications that directly create PostScript files. This feature should not be used in normal circumstances.

**Get Information from Printer** - If the printer is networked using TCP/IP or IPX, clicking [Get Information from Printer] checks the options installed on the printer and automatically updates [Installable Options] on the [Device Settings] tab. Clicking the button also obtains the printer's address and displays it in [Network Address].

When your printer is a local printer, [Get Information from Printer] cannot be used, and you must manually set the information on the print driver.

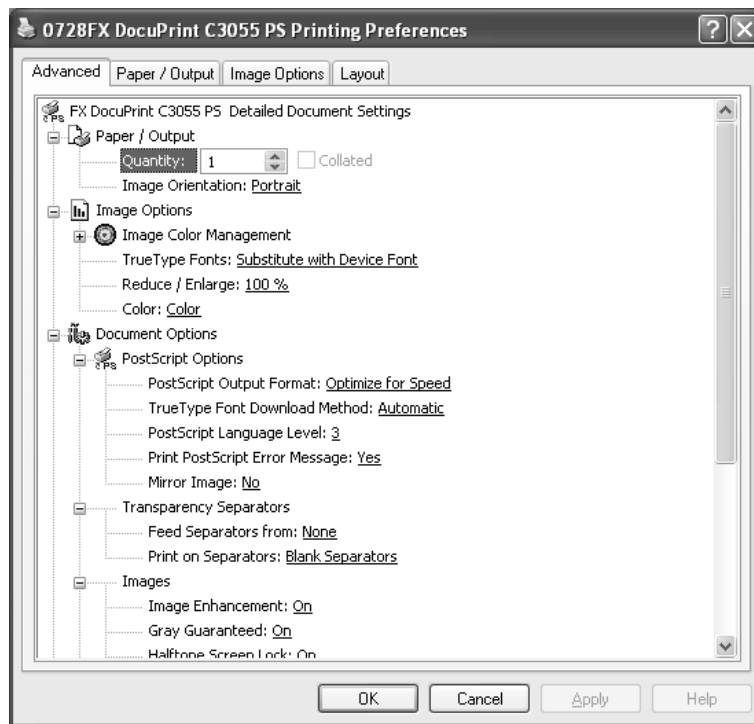
To use this feature, you must enable the printer's SNMP port.

## [Advanced] Tab

---

The following explains how to configure the [Advanced] tab in the Printing Preferences dialog box.

Select an item you want to configure and select its option from the menu that appears on the right.



## Setting Items

### Transparency Separators

**Feed Separators from** - Sets the paper tray for separators when using the Transparency Separators feature. Selecting [Auto] uses the paper tray selected on the printer.

**Print on Separators** - Sets whether or not to print on separators. Selecting [Off] inserts blank separators. Selecting [On] prints the same contents printed on transparencies to separators.

### Images

**Image Enhancement** - Sets whether or not to use the Image Enhancement feature. Selecting [On] artificially enhances resolution by smoothing out the edges of images. Images (bitmaps) that consist of rough dots may not be reproduced with smooth gradations. In such case, set this feature to [Off]. Selecting [On] or [Off] does not affect print speed.

**Gray Guaranteed** - Selecting the check box prints achromatic colors in black. This setting does not apply to images.

**Halftone Screen Lock** - Sets halftone screens. Selecting [On] prioritizes the settings on the printer over the settings on the application.

#### Details

**Image Rotation 180 Degrees** - Selecting the check box rotates the landscape or portrait pages in your document by 180 degrees. When the [Layout] tab > [Multiple-Up] is set to an option other than [1 Page Up], this rotates all pages by 180 degrees.

**Skip Blank Pages** - Sets whether or not to skip blank pages during printing.

**Draft Mode** - Selecting [On] uses less toner and thus the colors become lighter. Use this feature to save toner when printing documents that do not require high image quality.

**Substitute Tray** - Sets what action to take when the paper of the size you requested is not loaded in the printer.

- **Use Printer Settings** - Uses the settings configured on the printer.
- **Display Message** - Displays a message on the control panel that prompts you to load the paper. Your document will not be printed until you load the paper in the printer.
- **Use Nearest Size (Adjust to Fit)** - Uses the paper of the nearest size and prints the document at 100% magnification or at a reduced magnification if necessary.
- **Use Nearest Size (No Zoom)** - Uses the paper of the nearest size and prints the document at 100% magnification.
- **Use Larger Size (Adjust to Fit)** - Uses the paper of a larger size and prints the document at 100% magnification or at a reduced magnification if necessary.
- **Use Larger Size (No Zoom)** - Uses the paper of a larger size and prints the document at 100% magnification.
- **Feed from Bypass Tray** - Feeds the paper from the bypass tray when it is not loaded in the paper trays.

**Custom Paper Auto Orientation** - If printing on user-defined paper, selecting [On] corrects the orientation of the paper. If your document was printed 90 degrees rotated on the paper, set this feature to [On].

**CID Font** - Sets whether to use only CID fonts or both CID and OCF fonts. When using only CID fonts, select [CID Native]. When using both CID and OCF fonts, select [OCF Compatible].

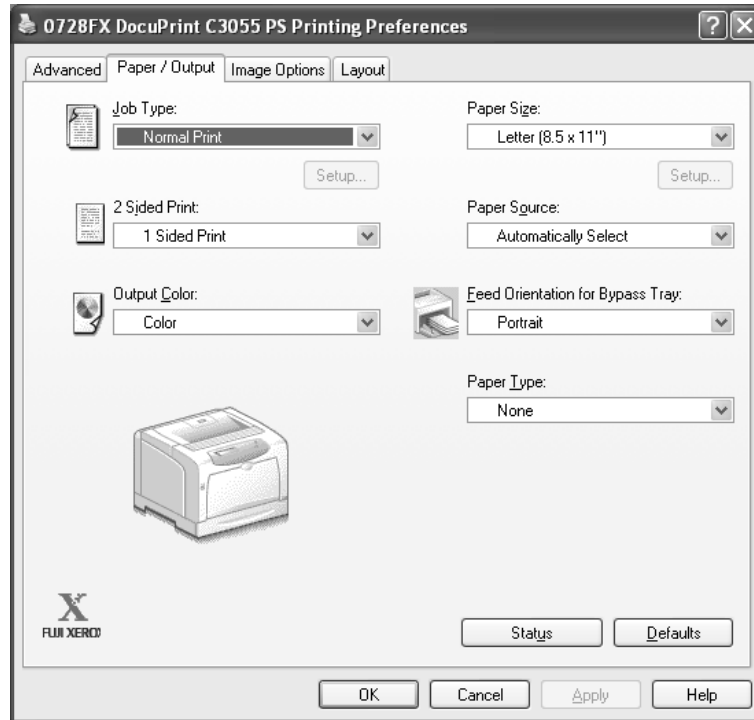
**NOTE:** [CID Font] appears only when the Japanese font kit (optional) is installed.

**About** - Displays the version information of the print driver.

**Help** - Displays the online help for the print driver.

## [Paper/Output] Tab

The following explains how to configure the [Paper/Output] tab in the Printing Preferences dialog box.



### Setting Items

**Job Type** - Sets the type of your print job to [Normal Print], [Secure Print], or [Sample Print].

**Normal Print** - Prints a job without using the Secure Print or Sample Print feature.

**Secure Print** - Temporarily stores a print job in the printer, rather than printing it immediately, until you manually start the printing from the control panel.

**Sample Print** - Allows you to print a proof copy of a multi-set job and prints the entire sets once the print result has been verified. If you set the print quantity to 1, this setting automatically changes to [Normal Print].

**NOTE:** To select [Secure Print] and [Sample Print], the [Device Settings] tab > [Hard Disk] must be set to [Available].

**Setup** - This button becomes active when [Job Type] is set to [Secure Print] or [Sample Print]. Clicking the button displays the [Secure Print] or [Sample Print] dialog box.

**User ID** - Sets the user ID for the Secure Print or Sample Print feature with up to 8 alphanumeric characters.

**Password** - Sets the password associated with the user ID for the Secure Print feature. The password can be up to 12 alphanumeric characters. Asterisks (\*\*\*) appear instead of text as you enter the password in this text box.

**NOTE:** [Password] appears only on the [Secure Print] dialog box.



**Retrieve Document Name** - Sets the method of naming the document that will be stored in the printer using the Secure Print or Sample Print feature. [Auto Retrieve] automatically retrieves the document name from the application from which the document will be printed. If the name exceeds 12 alphanumeric characters, only the first 12 characters will be valid.

**Document Name** - When [Retrieve Document Name] is set to [Enter Document Name], enter the document name with up to 12 alphanumeric characters.

**2 Sided Print** - Sets whether to print your job 1-sided or 2-sided. When printing 2-sided, select [Flip on long edge] or [Flip on short edge].

**Output Color** - Sets whether to print in color or in monochrome. [Color] uses all CMYK (cyan/magenta/yellow/black) toners when printing. [Black and White] uses only the K (black) toner.

**Paper Size** - Sets the paper size of your document.

**Paper Source** - Sets the paper tray to be used for printing the document.

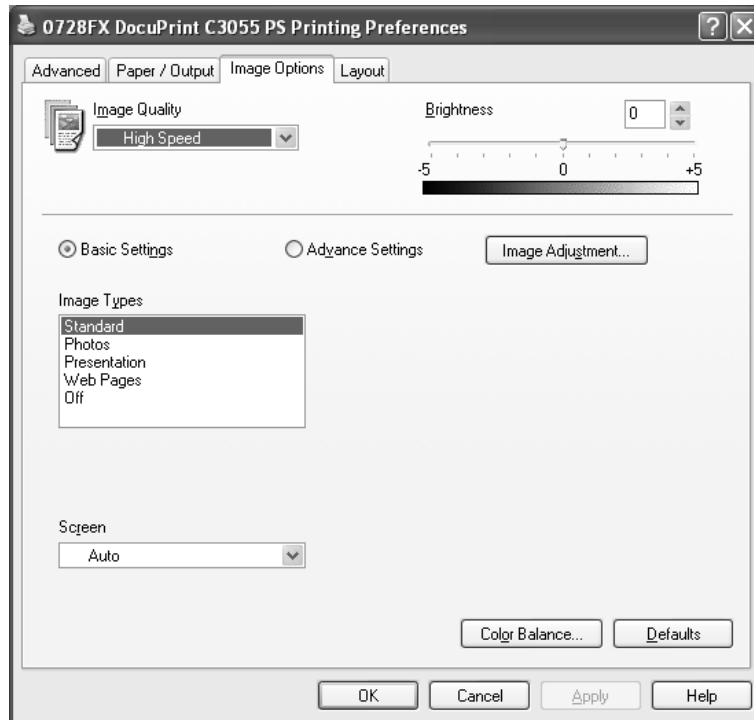
**Feed Orientation for Bypass Tray** - Sets the orientation of the paper when printing from the bypass tray. When loading the paper with one of the short edges facing into the bypass tray, select [Portrait]. When loading the paper with one of the long edges facing into the bypass tray, select [Landscape]. If the orientation can only be one way or the other depending on the paper size, the actual orientation of the paper overrides this setting.

**Paper Type** - Sets the type of paper to be used for printing your document. Selecting [None] uses the paper type selected on the printer.

## [Image Options] Tab

---

The following explains how to configure the [Image Options] tab in the Printing Preferences dialog box.



### Setting Items

**Image Quality** - Sets whether to print in [High Speed] or [High Quality] mode.

**NOTE:** [High Quality] may reduce print speed when compared to [High Speed].

**Brightness** - Sets the overall brightness of the output.

**Basic Settings** - Allows you to configure the basic RGB color correction settings.

**Advanced Settings** - Allows you to configure the advanced RGB color correction settings.

**Image Adjustment** - Displays the [Image Adjustment] dialog box.

**RGB Color Correction** - Sets the color correction method for the RGB images on your document. You can configure this when [Advanced Settings] is selected.

- **Perceptual** - Optimizes the rendering of photographic images by preserving all tonal gradations.
- **Saturation** - Optimizes the rendering of business graphics by preserving the saturation of colors.
- **Relative Colorimetric** - Preserves in-gamut colors and represents out-of-gamut colors by the closest match.

- **Absolute Colorimetric** - Does not map the white in the images to the white of the output paper. Depending on the [RGB Color Temperature] setting, the white in the images may be printed with a tint of color.

**NOTE:** [RGB Color Correction] cannot be configured when the [Paper/Output] tab > [Output Color] is set to [Black and White].

**Enter RGB profile** - Sets RGB profile. The [Enter RGB profile] setting will be applied in conjunction with the [RGB Color Correction] setting. [Adobe RGB (1998)] is the RGB profile of Adobe Systems Incorporated. [Adobe RGB (1998)] may not accurately reproduce the tones of highly saturated graphics.

**NOTE:** [Enter RGB profile] can be configured only when the [Paper/Output] tab > [Output Color] is set to [Color] and the [Image Options] tab > [Advanced Settings] is selected.

**RGB Gamma Correction** - Adjusts the brightness of the RGB images on your document. Select a value depending on the monitor being used. The larger the value, the darker the output.

**NOTE:** [RGB Gamma Correction] can be configured only when the [Paper/Output] tab > [Output Color] is set to [Color].

**RGB Color Temperature** - Adjusts the color temperature of your monitor to match the on-screen colors to the printed output colors.

- **5000K(D50)** - Colors become slightly more yellowish than [6500K (D65)].
- **9300K** - Colors become slightly more bluish than [6500K (D65)].

**NOTE:** [RGB Color Temperature] can be configured only when the [Paper/Output] tab > [Output Color] is set to [Color] and the [Image Options] tab > [Advanced Settings] is selected.

**Screen** - Adjusts the image quality of your document.

**Auto** - Automatically adjusts the image quality based on the type of the document.

**Fineness** - Optimizes the reproduction of texts and lines.

**Standard** - Optimizes the reproduction of photographic images.

**Gradation** - Optimizes the reproduction of charts and graphs.

**Color Balance** - Displays the [Color Balance] dialog box.

**Adjust Color Balance** - Selecting the check box allows you to adjust the density of the CMYK (cyan/magenta/yellow/black) toners.

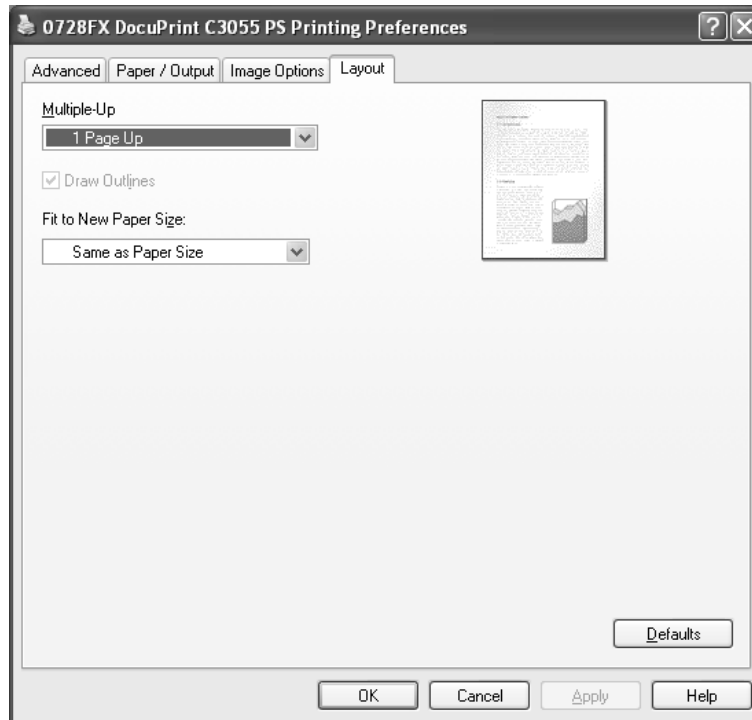
To adjust the density of a color, select the color from [Target Color] and specify its density for [Highlights], [Midtones], and [Shadows].

**NOTE:** Only [Black] can be adjusted when the [Paper/Output] tab > [Output Color] is set to [Black and White].

## [Layout] Tab

---

The following explains how to configure the [Layout] tab in the Printing Preferences dialog box.



### Setting Items

**Multiple-Up** - Prints multiple pages onto one sheet of paper.

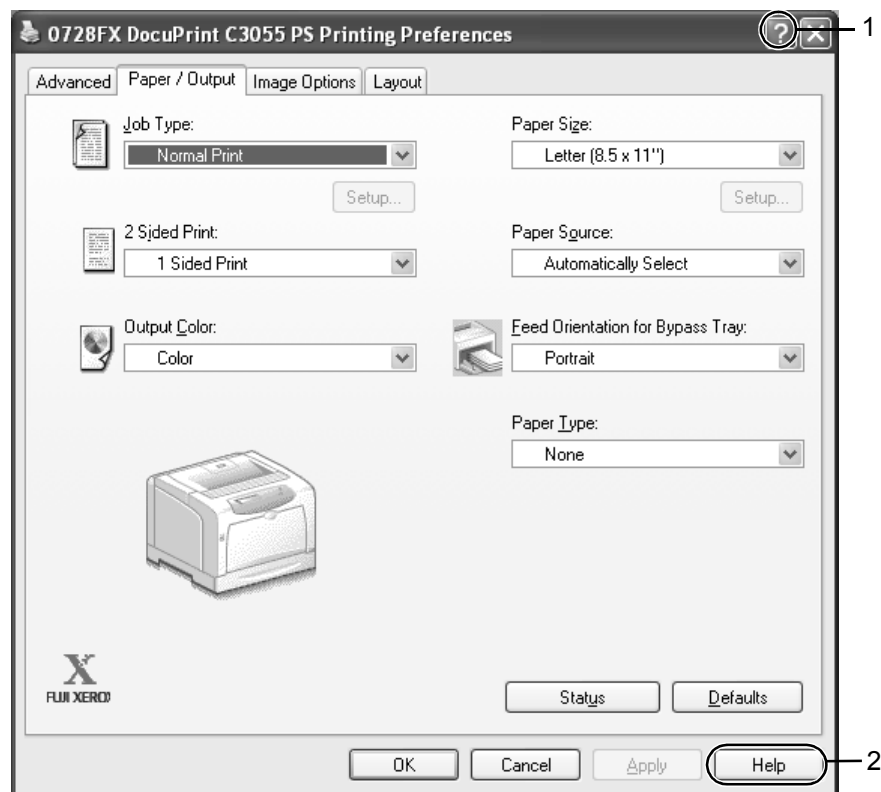
**NOTE:** [Multiple-Up] is displayed only when the [Device Settings] tab > [Duplex Module] is set to [Available] and the [Advanced] tab > [Enable advanced printing feature] is selected.

**Draw Outlines** - Prints each page with a frame when [Multiple-Up] is enabled.

**Fit to New Paper Size** - Sets the size of the output paper. When this setting is different from [Paper Size] on the [Paper/Output] tab, your document will be reduced /enlarged to fit to the paper size selected here.

## Using the Online Help

The following explains how to use the online help.



1. Click the [?] button on the print driver dialog box. The [?] mark appears next to your mouse pointer. Then, click an item you need help with. The description of the item pops up. When you are finished reading the description, click anywhere on the pop-up window to close it.
2. Click the [Help] button on the print driver dialog box. The description of the tab that is currently displayed appears.



# 4 Installation and Configuration on Mac OS

This chapter contains the following information:

- About the Software
  - Included Software
  - Hardware/Software Requirements
- Installing the Print Driver
  - Installation Procedure (Mac OS 9.x or earlier)
  - Configuring the PPD File (Mac OS 9.x or earlier)
  - Installation Procedure (Mac OS X)
  - Adding the Printer (Mac OS X)
- Configuring the Print Driver
  - Installable Options
  - Printer Specific Options/Printer Features
  - Job Type (Mac OS X only)
  - Job Accounting (Mac OS X only)
- Installing the Screen Fonts
- Fuji Xerox PS Utility
  - Installing Fuji Xerox PS Utility
  - Uninstalling Fuji Xerox PS Utility
  - Using Fuji Xerox PS Utility

## About the Software

---

This section describes the software for Mac OS included on the PostScript Driver Library CD-ROM.

## Included Software

---

The following items are included on the CD-ROM and are required to print PostScript documents from Mac OS.

**AdobePS 8.5.1, 8.7.0, and 8.8 and PPD files** - The Adobe PostScript print drivers and PPD files for Mac OS.

**Fuji Xerox PPD Installer** - The PPD install package for Mac OS X 10.1.5 and 10.2.8.

**Fuji Xerox Plugin Installer** - The plug-in install package for Mac OS X 10.3.9 and 10.4.

**Fuji Xerox PS Utility** - Enables remote configuration of the printer from your Mac OS computer.

**Adobe Screen Fonts** - Contains screen fonts (17 TrueType fonts and 117 PostScript fonts) that are standard for PostScript 3 printers. It also contains 37 PostScript fonts for the Central European (CE) character codes.

**ATM (Adobe Type Manager) ver. 4.5.2** - Allows you to install font typefaces and activate and manage fonts.

**Adobe Acrobat Reader** - Allows you to view and print PDF files on all major computing platforms.

**Readme.txt** - Describes the precautions that must be followed when using the print drivers. Be sure to read this before using the print drivers.

## **Software/Hardware Requirements**

---

The system requirements for the print drivers and utility for Mac OS are as follows:

### **Computer System**

- Macintosh
- Power Macintosh

### **Print Driver**

- **AdobePS 8.5.2** - Mac OS 7.6.1 through 8.1
- **AdobePS 8.7** - Mac OS 8.5 and 8.5.1
- **AdobePS 8.8** - Mac OS 8.6 through 9.2.2

### **PPD Install/Plug-in Install Package**

- **Fuji Xerox PPD Installer** - Mac OS X 10.1.5 and 10.2.8
- **Fuji Xerox Plugin Installer** - Mac OS X 10.3.9 and 10.4

### **Utility**

- **Fuji Xerox PS Utility** - Mac OS 7.6.1 or later

**NOTE:** Fuji Xerox PS Utility runs in the Classic environment on Mac OS X.



---

## Installing the Print Driver

---

This section describes how to install a AdobePS print driver on Mac OS 7.6.1 through 9.x and how to add the printer on Mac OS X 10.1.5, 10.2.8, 10.3.9, or 10.4.

**NOTE:** You do not need to install a PostScript print driver on Mac OS X. A PostScript print driver is already installed as a part of Mac OS X.

### Installation Procedure (Mac OS 9.x or Earlier)

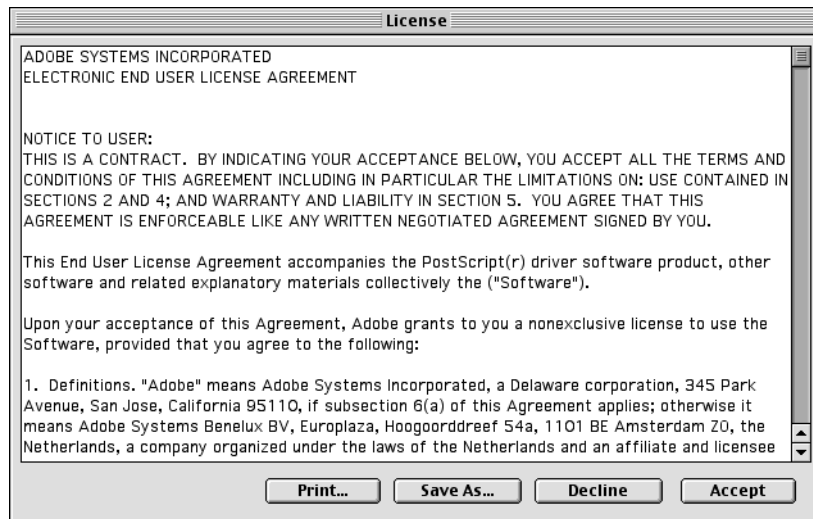
---

The following explains how to install a AdobePS print driver on Mac OS 9.x or earlier. The following procedure uses AdobePS 8.8 as an example.

1. Start Mac OS 9.x or earlier.
2. Insert the PostScript Driver Library CD-ROM into your CD-ROM drive.  
The [FXOPS-PS] icon appears on your desktop.
3. Double-click the [FXOPS-PS] icon.  
The [FXOP-PS] window appears.
4. Double-click the folder for your printer model and then the “AdobePS880” folder.
5. Double-click [AdobePS Installer 8.8].  
The installer launches.
6. Click [Continue].

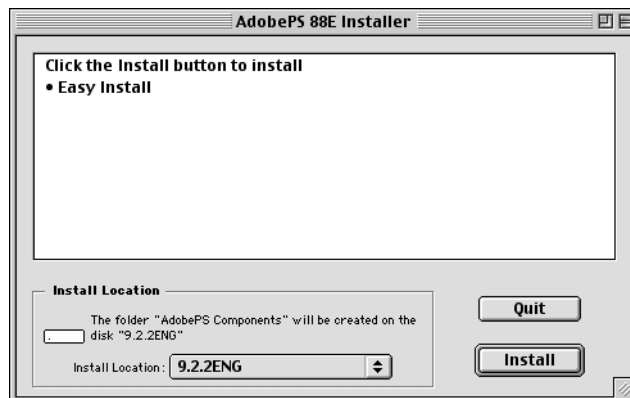


7. Read the license agreement. If you agree, click [Accept].



Read "Read Me" and click [Continue].

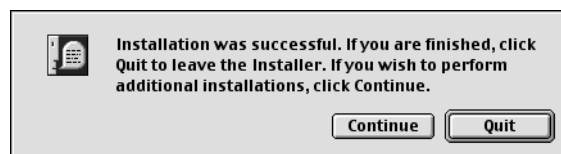
8. Verify the installation location, change it if necessary, and click [Install].



The installation begins.

When the installation is complete, the following dialog box appears.

9. Click [Continue] or [Quit].



This completes the installation of the print driver.

Proceed to *Configuring the PPD File (Mac OS 9.x or Earlier)* on page 75 to configure the PPD file on the print driver.

## Configuring the PPD File (Mac OS 9.x or Earlier)

When you are finished installing the AdobePS print driver, configure the PostScript Printer Description (PPD) file onto the print driver.

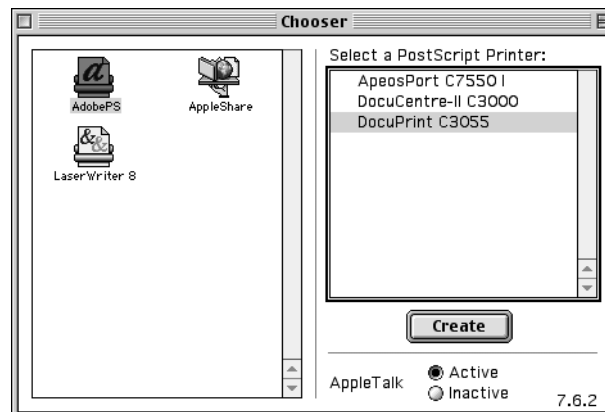
The print driver controls the printer's features based on the information stored in the PPD file.

### When Using EtherTalk

1. Make sure that the printer is switched on.
2. Make sure that the printer's EtherTalk port is set to [Enable].  
**NOTE:** See the User Guide on how to enable the EtherTalk port.
3. From the [Apple] menu, select [Chooser], and then click [AdobePS].
4. In Chooser, select the printer from the [Select a PostScript Printer] list box, and then click [Create].

**NOTE:** The displayed window may vary depending on the connection environment of the printer and a host device.

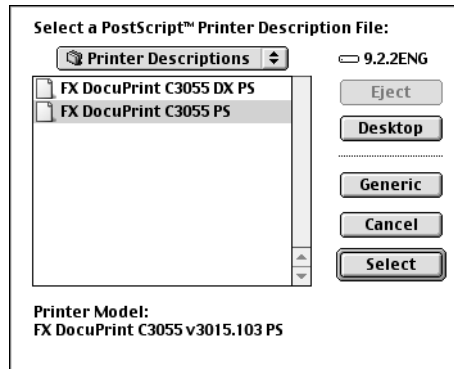
**NOTE:** The default printer name for the DocuPrint C3055/C3055 DX is "FXnnnnnn" (where nnnnnn is the last six digits of the printer's MAC address).



The printer is searched automatically and the PPD file is configured.

**If the PPD File was Not Found Automatically:**

- (1) The [Select a PostScript™ Printer Description File] dialog box appears.
- (2) Select the PPD file for your printer model and click [Select].



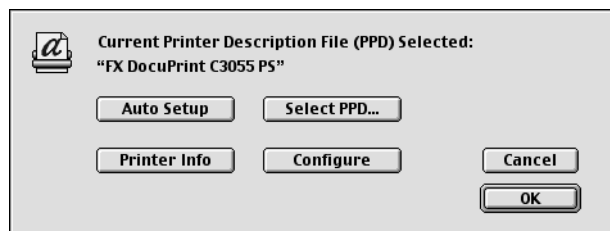
The PPD file is configured.

5. In Chooser, select [Create] to set the options installed on the printer.

**NOTE:** You can change the option settings even after the installation of the print driver.

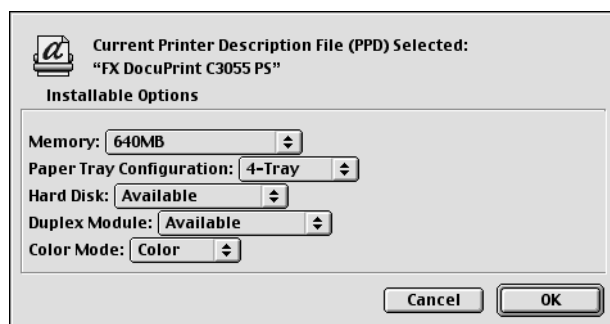
To use the features of the options, you must set [Installable Options]. Normally, [Installable Options] is set automatically via bi-directional communication with the printer and you do not need to change the settings.

6. Click [Configure].



7. Set the options installed on the printer.

For information on how to set the options, see *Configuring the Print Driver* on page 86.



8. Click [OK].  
Click [OK] again in the next window.
9. Close Chooser.

## When Using the USB Port

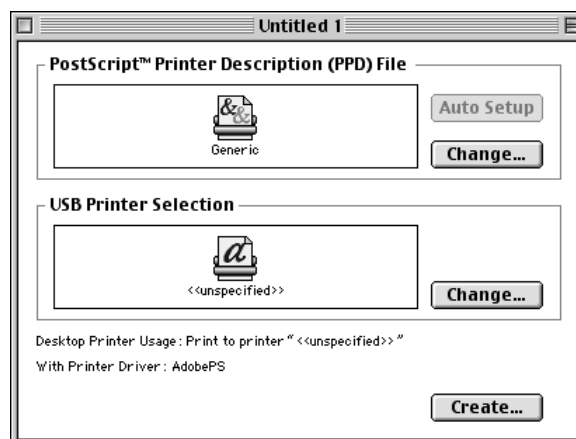
1. When a USB cable is connected to your printer, disconnect it.
2. Make sure that your computer is switched on and switch the printer off.
3. Connect your computer and the printer with a USB cable.
4. Switch the printer on.
5. Double-click [Desktop Printer Utility].  
[Desktop Printer Utility] launches and the [New Desktop Printer] dialog box appears.

**NOTE:** [Desktop Printer Utility] is stored in the "AdobePS Components" folder in your Macintosh hard disk.

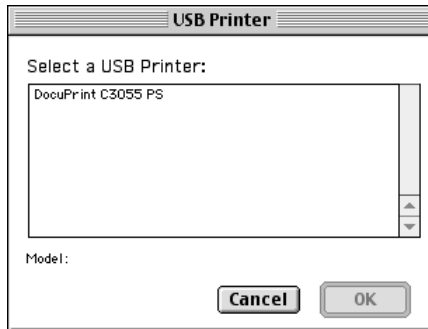
6. From [With], select [AdobePS].  
From [Create Desktop...], select [Printer (USB)].  
Click [OK].



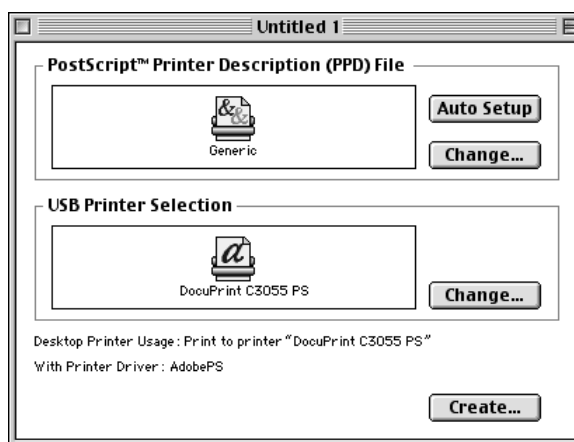
7. In [USB Printer Selection], click [Change...].  
The [USB Printer] dialog box appears.



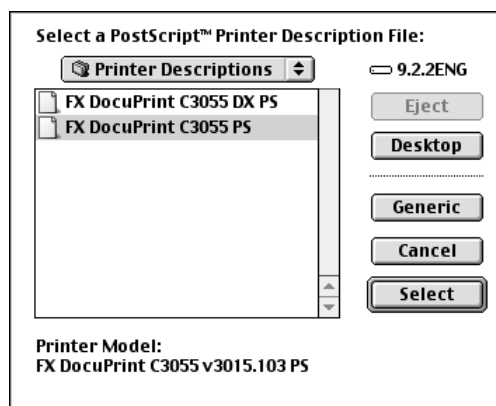
8. Select your printer from [Select a USB Printer] and click [OK].



9. In [Post Script™ Printer Description (PPD) File], click [Auto Setup].  
The [Select a Post Script™ Printer Description File] dialog box appears.

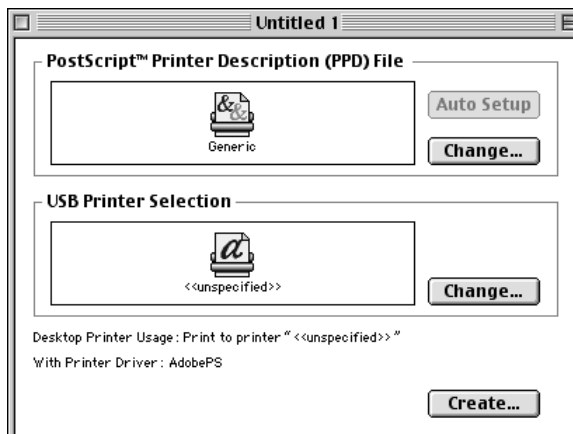


10. Select the PPD file for your printer model and click [Select].



The PPD file is configured.

11. Click [Create...].



12. A dialog box asking if you want to save the changes appears. Click [Save] in the dialog box.
13. In the displayed dialog box, specify the printer's name and installation location and click [Save].  
Your settings are saved and the printer is created.
14. Set the options installed on the printer.

**NOTE:** You can change the option settings even after the installation of the print driver.

To use the features of the options, you must set [Installable Options]. Normally, [Installable Options] is set automatically via bi-directional communication with the printer and you do not need to change the settings.

## Installation Procedure (Mac OS X)

The following describes how to install the PostScript Printer Description (PPD) file on Mac OS X 10.1.5, 10.2.8, 10.3.9, or 10.4.

To install the PPD file on Mac OS X 10.1.5 or 10.2.8, use Fuji Xerox PPD Installer. On Mac OS X 10.3.9 and 10.4, use Fuji Xerox Plugin Installer.

The following procedure uses Mac OS X 10.3.9 as an example.

**NOTE:** You do not need to install a PostScript print driver on Mac OS X. A PostScript print driver is already installed as a part of Mac OS X.

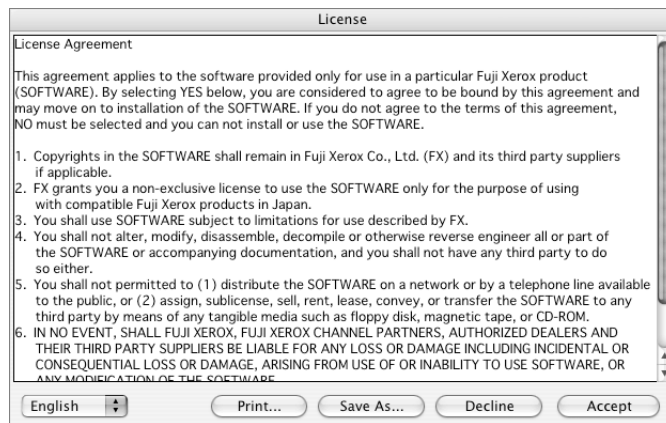
1. Insert the PostScript Driver Library CD-ROM into your CD-ROM drive.  
The [FXOPS-PS] icon appears on your desktop.
2. Double-click the [FXOPS-PS] icon.  
The [FXOPS-PS] window appears.
3. Double-click the [Mac OS X] folder.  
The [Mac OS X] window appears.
4. Open the folder for the version of your Mac OS X.

5. Double-click the [Fuji Xerox Plugin Installer] program icon.  
The installer launches and the [Authenticate] window appears.
6. Enter the administrator's user name and password, and then click [OK].



The license agreement appears.

7. Read the license agreement. If you agree, click [Accept].



8. Verify the installation location, change it if necessary, and click [Install].



9. A dialog box that informs you that the installation is complete appears. Click [Quit] in the dialog box.

This completes the installation of the PPD file.

Proceed to *Adding the Printer (Mac OS X)* on page 81 to configure the PPD file on the print driver.



## Adding the Printer (Mac OS X)

When you are finished installing the PPD file, configure the PPD file on the print driver and add the printer.

The print driver controls the printer's features based on the information stored in the PPD file.

1. If using the USB port, perform the following.  
If you are not using the USB port, proceed to Step 2.
  - 1) If a USB cable is connected to your printer, disconnect it.
  - 2) Make sure that your computer is switched on and switch the printer off.
  - 3) Connect your computer and the printer with a USB cable.
  - 4) Switch the printer on.
2. Check the port status of the printer.
  - When using AppleTalk, set the EtherTalk port to [Enable].
  - When using IP Printing, set the LPD port to [Enable].
  - When using USB, set the USB port to [Enable].

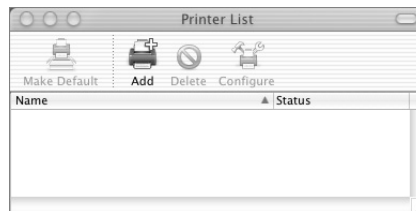
**NOTE:** See the User Guide on how to enable each port.

3. Start [Print Setup Utility].

**NOTE:** On Mac OS X 10.1.5 through 10.2.8, start [Printer Center]. [Print Center] or [Printer Setup Utility] is in the "Utilities" folder under the "Applications" folder.

The [Printer List] window appears.

4. Click [Add].



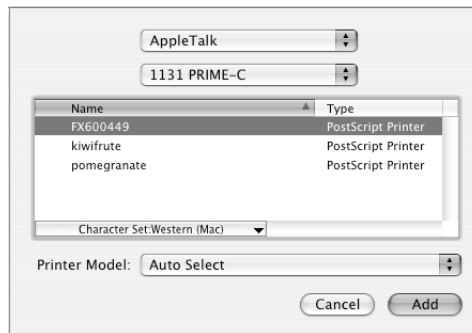
5. Select the protocol to be used to connect to the printer.

## Procedure (Mac OS X 10.1.5 through 10.3.9)

The following procedure uses Mac OS X 10.3.9 as an example.

### When Using AppleTalk

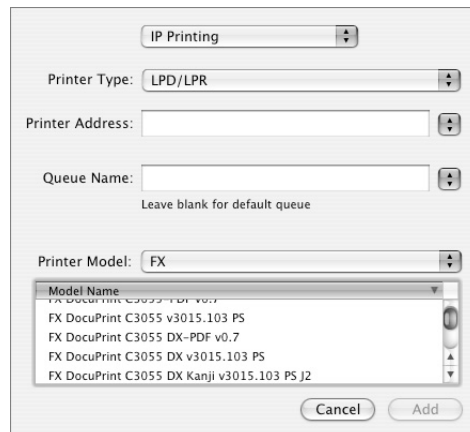
1. Select [AppleTalk] from the menu, and specify the zone where the printer is located.



2. Select the printer from the list.  
**NOTE:** The default printer name for the DocuPrint C3055/C3055 DX is "FXnnnnnn" (where nnnnnn is the last six digits of the printer's MAC address).
3. From [Printer Model], select [Auto Select] and proceed to Step 6.  
If the PPD file for your printer was not found automatically, select [Other...] and proceed to Step 4.  
The [Choose a File] dialog box appears.
4. Display "/Library/printers/PPDs/Contents/Resources/en.lpoj"
5. Select the PPD file for your printer model and click [Choose].
6. Click [Add].

### When Using IP Printing

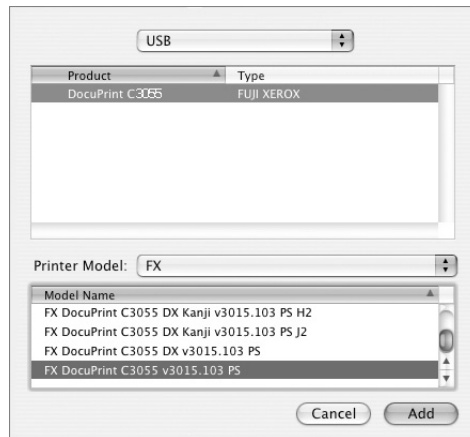
1. Select [IP Printing] from the menu, and enter the printer's IP address in [Printer Address].  
**NOTE:** On Mac OS X 10.3.3 through 10.3.9, select [LPD/LPR] from [Printer Type].



2. From [Printer Model], select [FX].  
From [Model Name], select the PPD file for your printer model.
3. Click [Add].

### When Using USB

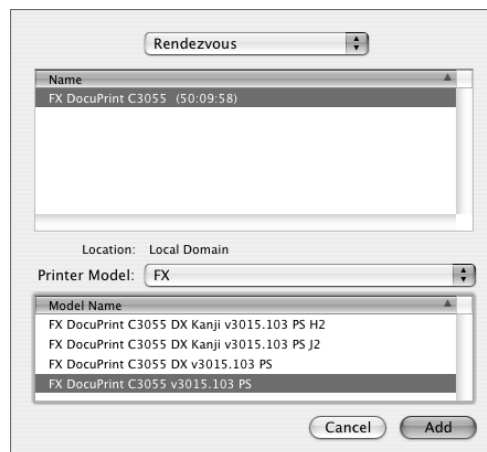
1. Select [USB] from the menu, and select the printer you want to use from the list.



2. From [Printer Model], select [FX].  
From [Model Name], select the PPD file for your printer model.
3. Click [Add].

### When Using Rendezvous (Mac OS X 10.2 and 10.3 Only)

1. Select [Rendezvous] from the menu, and select the printer you want to use from [Name].



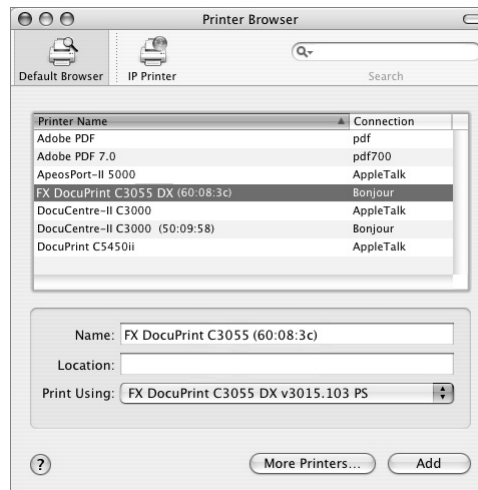
2. From [Printer Model], select [FX].  
From [Model Name], select the PPD file for your printer model.
3. Click [Add].

## Procedure (Mac OS X 10.4)

### When Using AppleTalk, USB, or Bonjour

**NOTE:** If you switch the printer on after connecting a USB cable, the printer will be added automatically to the list. In such case, manually delete the printer from the list, and add it using the following procedure.

1. In the [Printer Browser] window, select [Default Browser].  
The printers available on the AppleTalk, USB, and Bonjour ports are displayed.



2. Select the printer you want to use from the list.
3. Make sure that the printer is selected in [Print Using].  
When the printer is not selected, select [FX] in [Print Using]. From the list of model names, select the PPD file for your printer model.

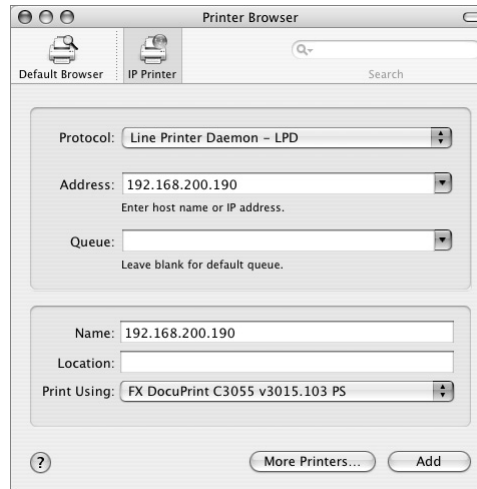
**NOTE:** The default printer name for the DocuPrint C3055/C3055 DX when using AppleTalk is "FXnnnnnn" (where nnnnnn is the last six digits of the printer's MAC address).

4. Click [Add].
5. In the displayed window, set the options installed on the printer and click [Continue].

**NOTE:** The option settings can be configured also after adding the printer.

## When Using IP

1. In the [Printer Browser] window, select [IP Printer].



2. From the [Protocol] menu, select [Line Printer Deamon - LPD] and enter the IP address of the printer in [Address].
3. Verify that the printer is selected in [Print Using]. When the printer is not selected, select [FX] in [Print Using]. From the list of model names, select the PPD file for your printer model.
4. Click [Add].
5. In the displayed window, set the options installed on the printer and click [Continue].

**NOTE:** The option settings can be configured also after adding the printer.

This completes the addition of the printer.

## About the Printer Options

On Mac OS X 10.2.x, click [Printers] on the [Print Center] menu bar, and select [Show Info].

On Mac OS X 10.3.3 through 10.3.9, click [Printers] on the [Printer Setup Utility] menu bar, and select [Show Info].

Next, select [Installable Options] and select the options installed on the printer. See *Configuring the Print Driver on page 86* for how to set the options.

On Mac OS X 10.1.5, the printer's options cannot be set on the print driver. The driver assumes all options are installed and thus the features for all options are selectable. Make sure to set the features only for the options that are actually installed on the printer.

## Configuring the Print Driver

---

---

This section describes how to configure [Installable Options], [Printer Specific Options] (Mac OS 9.x or earlier)/[Printer Features] (Mac OS X), [Secure Print/Sample Print] (Mac OS X 10.3.9/10.4 only), and [Job Accounting] (Mac OS X 10.3.9/10.4 only).

### Installable Options

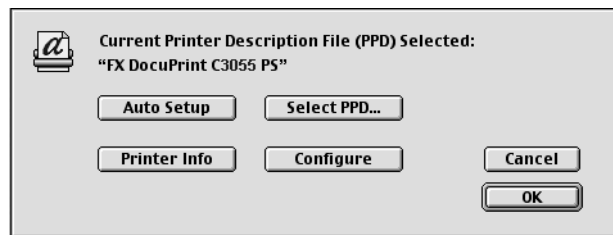
---

#### Procedure (Mac OS 9.x or Earlier)

The following explains how to configure [Installable Options] on Mac OS 9.x or earlier.

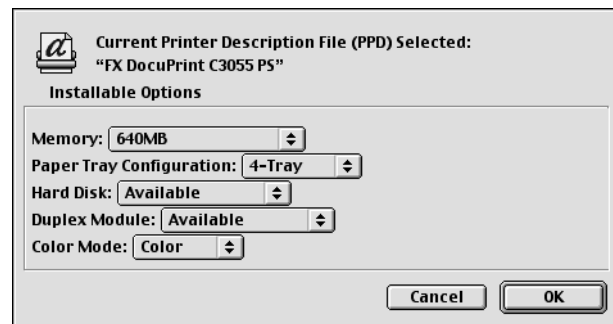
**NOTE:** Normally, [Installable Options] is set automatically via bi-directional communication with the printer and you do not need to change the settings.

1. Select the printer in Chooser and click [Setup].  
The [Current Printer Description File (PPD) Selected] dialog box appears.
2. Click [Configure].



The [Installable Options] list appears.

3. Configure [Installable Options] and click [OK].



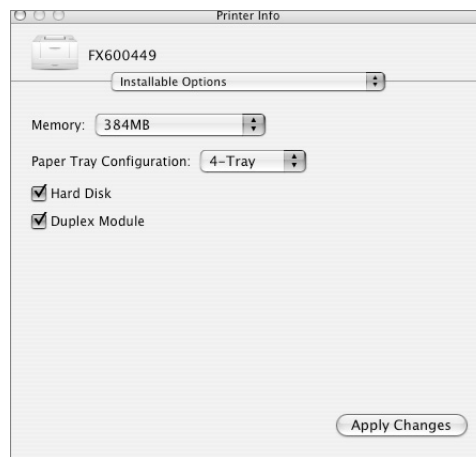
## Procedure (Mac OS X)

The following explains how to configure [Installable Options] on Mac OS X.

1. On Mac OS X 10.2.8, click [Printers] on the [Print Center] menu bar, and select [Show Info].  
On Mac OS X 10.3.3 through 10.3.9, click [Printers] on the [Printer Setup Utility] menu bar, and select [Show Info].

**NOTE:** On Mac OS X 10.1.5, the printer's options cannot be set on the print driver. The driver assumes all options are installed and thus the features for all options are selectable. Make sure to set the features only for the options that are actually installed on the printer.

2. Select [Installable Options] and set the options installed on the printer.



## Setting Items

**Memory** - Sets the memory capacity of the printer.

**Paper Tray Configuration** - Sets the paper tray configuration of the printer.

**Hard Disk** - Sets whether or not the hard disk is installed in the printer.

**Duplex Module** - Sets whether or not the duplex unit is installed in the printer.

**NOTE:** The duplex unit comes standard on the DocuPrint C3055 DX. If your printer is C3055 DX, [Duplex Module] does not appear under [Installable Options].

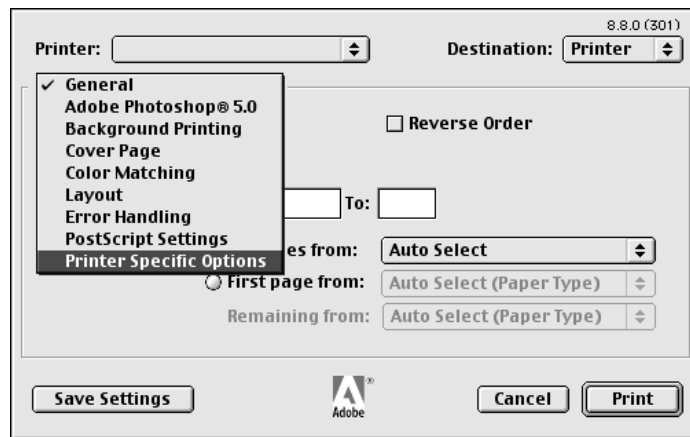
## Printer Specific Options/Printer Features

---

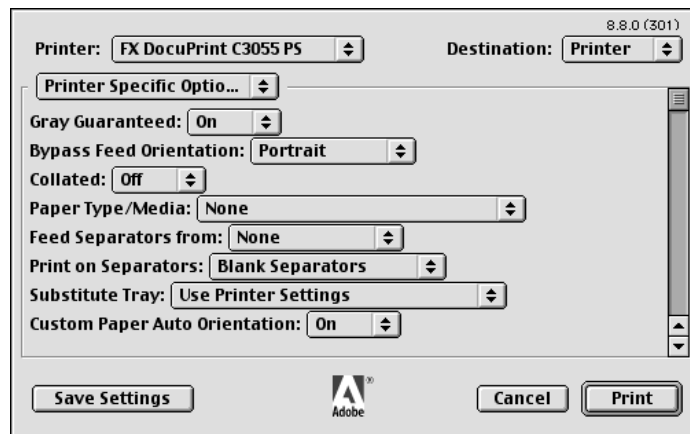
### Procedure (Mac OS 9.x or Earlier)

The following explains how to configure [Printer Specific Options] on Mac OS 9.x or earlier.

1. On an application, click [Print] from the [File] menu.  
The [Print] dialog box appears.
2. Select [Printer Specific Options].



3. Set the desired features.





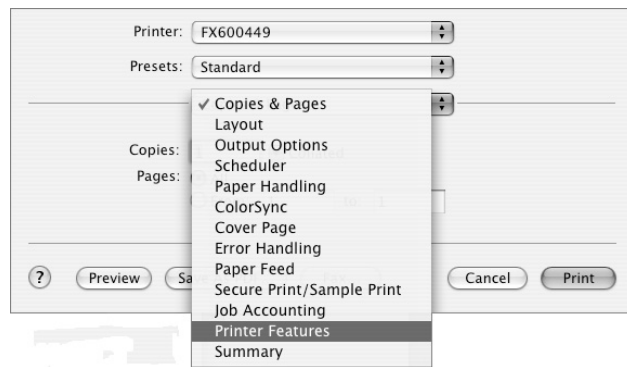
## Procedure (Mac OS X)

The following explains how to configure [Printer Features] on Mac OS X.

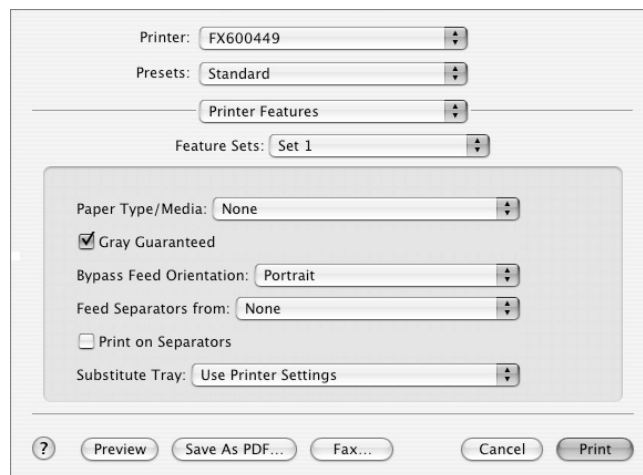
1. On an application, click [Print] from the [File] menu.

The [Print] dialog box appears.

2. Select [Printer Features].



3. Set the desired features.



## Setting Items

The following explains the items in [Printer Specific Options] and [Printer Features].

The displayed items vary depending on the options installed on the printer. Make sure to set these items after configuring [Installable Options]. For details on [Installable Options], see *Installable Options on page 86*.

**Paper Type/Media** - Sets the type of paper to be used when printing your document. Selecting [None] uses the paper type selected on the printer.

**NOTE:** On Mac OS X, [Paper Type/Media] appears when [Feature Sets] is set to [Set 1].

**Gray Guaranteed** - Selecting the check box prints achromatic colors in black. This does not apply to images.

**NOTE:** On Mac OS X, [Gray Guaranteed] appears when [Feature Sets] is set to [Set 1].

**Bypass Feed Orientation** - Sets the orientation of the paper when printing from the bypass tray. When loading the paper with one of the short edges facing into the bypass tray, select [Portrait]. When loading the paper with one of the long edges facing into the bypass tray, select [Landscape]. If the orientation can only be one way or the other depending on the paper size, the actual orientation of the paper overrides this setting.

**NOTE:** On Mac OS X, [Bypass Feed Orientation] appears when [Feature Sets] is set to [Set 1].

**Feed Separators from** - Sets the paper tray for separators when using the Transparency Separators feature. Selecting [Auto] uses the paper tray selected on the printer.

**NOTE:** On Mac OS X, [Feed Separators from] appears when [Feature Sets] is set to [Set 1].

**Print on Separators** - Sets whether or not to print on separators. Selecting [Off] inserts blank separators. Selecting [On] prints the same contents printed on transparencies to separators.

**NOTE:** On Mac OS X, [Print on Separators] appears when [Feature Sets] is set to [Set 1].

**Substitute Tray** - Sets what action to take when the paper of the size you requested is not loaded in the printer.

**Use Printer Settings** - Uses the settings configured on the printer.

**Display Message** - Displays a message on the control panel that prompts you to load the paper. Your document will not be printed until you load the paper in the printer.

**Use Nearest Size (Adjust to Fit)** - Uses the paper of the nearest size and prints the document at 100% magnification or at a reduced magnification if necessary.

**Use Nearest Size (No Zoom)** - Uses the paper of the nearest size and prints the document at 100% magnification.

**Use Larger Size (Adjust to Fit)** - Uses the paper of a larger size and prints the document at 100% magnification or at a reduced magnification if necessary.

**Use Larger Size (No Zoom)** - Uses the paper of a larger size and prints the document at 100% magnification.

**Feed from Bypass Tray** - Feeds the paper from the bypass tray when it is not loaded in the paper trays.

**NOTE:** On Mac OS X, [Substitute Tray] appears when [Feature Sets] is set to [Set 1].

**Custom Paper Auto Orientation** - If printing on user-defined paper, selecting [On] corrects the orientation of the paper. If your document was printed 90 degrees rotated on the paper, set this feature to [On].

**NOTE:** On Mac OS X, [Custom Paper Auto Orientation] appears when [Feature Sets] is set to [Set 2].

**Draft Mode** - Selecting [On] prints with less toner and thus the colors become lighter. Use this feature to save toner when printing documents that do not require high image quality.

**NOTE:** On Mac OS X, [Draft Mode] appears when [Feature Sets] is set to [Set 2].

**Skip Blank Pages** - Sets whether or not to skip blank pages during printing.

**NOTE:** On Mac OS X, [Skip Blank Pages] appears when [Feature Sets] is set to [Set 2].

**Halftone Screen Lock** - Sets halftone screens. Selecting [On] prioritizes the settings on the printer over the settings on the application.

**NOTE:** On Mac OS X, [Halftone Screen Lock] appears when [Feature Sets] is set to [Set 2].

**Output Color** - Sets whether to print in color or in monochrome. [Color] uses all CMYK (cyan/magenta/yellow/black) toners when printing. [Black and White] uses only the K (black) toner.

**NOTE:** On Mac OS X, [Output Color] appears when [Feature Sets] is set to [Set 2].

**CID Font** - Sets whether to use only CID fonts or both CID and OCF fonts. When using only CID fonts, select [CID Native]. When using both CID and OCF fonts, select [OCF Compatible].

**NOTE:** [CID Font] appears only when the Japanese font kit (optional) is installed.

**NOTE:** On Mac OS X, [CID Font] appears when [Feature Sets] is set to [Set 2].

**Print Mode** - Sets whether to print in [High Speed] or [High Quality] mode.

**NOTE:** On Mac OS X, [Print Mode] appears when [Feature Sets] is set to [1. Graphics].

**Brightness** - Sets the overall brightness of the output.

**NOTE:** On Mac OS X, [Brightness] appears when [Feature Sets] is set to [1. Graphics].

**Image Type** - Sets the type of your document.

**Standard** - Optimizes the printing of business documents that consist of texts and graphs.

**Photos** - Suitable for printing photographic images and optimizes the reproduction of gradations. This is ideal for images represented in sRGB.

**Presentation** - Suitable for printing presentation materials that need vibrant colors.

**Web Pages** - Suitable for printing the contents displayed on your computer screen, such as web pages.

**Off** - Does not perform color correction.

**NOTE:** On Mac OS X, [Image Type] appears when [Feature Sets] is set to [1. Graphics].

**Screen** - Adjusts the image quality of your document.

**Auto** - Automatically adjusts the image quality based on the type of the document.

**Fineness** - Optimizes the reproduction of texts and lines.

**Standard** - Optimizes the reproduction of photographic images.

**Gradation** - Optimizes the reproduction of charts and graphs.

**NOTE:** On Mac OS X, [Screen] appears when [Feature Sets] is set to [1. Graphics].

**Adjust Color Balance** - Selecting the check box adjusts the density of the CMYK (cyan/magenta/yellow/black) toners. The density of each toner can be adjusted in [Low Density], [High Density], and [High Density] under [3. Color Balance C], [4. Color Balance M], [5. Color Balance Y], and [6. Color Balance K].

**NOTE:** On Mac OS X, [Adjust Color Balance] appears when [Feature Sets] is set to [1. Graphics].

**RGB Color Correction** - Sets the color correction method for the RGB images on your document.

**Perceptual** - Optimizes the rendering of photographic images by preserving all tonal gradations.

**Saturation** - Optimizes the rendering of business graphics by preserving the saturation of colors.

**Relative Colorimetric** - Preserves in-gamut colors and represents out-of gamut colors by the closest match.

**Absolute Colorimetric** - Does not map the white in the images to the white of the output paper. Depending on the [RGB Color Temperature] setting, the white in the images may be printed with a tint of color.

**NOTE:** On Mac OS X, [RGB Color Correction] appears when [Feature Sets] is set to [2. Color Adjustment]. This feature is not supported on Mac OS X 10.1.5.

**RGB Profile** - Sets RGB profile. The [RGB profile] setting will be applied in conjunction with the [RGB Color Correction] setting. [Adobe RGB (1998)] is the RGB profile of Adobe Systems Incorporated. [Adobe RGB (1998)] may not accurately reproduce the tones of highly saturated graphics.

**NOTE:** On Mac OS X, [RGB Profile] appears when [Feature Sets] is set to [2. Color Adjustment]. This feature is not supported on Mac OS X 10.1.5.

**RGB Gamma Correction** - Adjusts the brightness of the RGB images on your document. Select a value depending on the monitor being used. The larger the value, the darker the output.

**NOTE:** On Mac OS X, [RGB Gamma Correction] appears when [Feature Sets] is set to [2. Color Adjustment]. This feature is not supported on Mac OS X 10.1.5.

**RGB Color Temperature** - Adjusts the color temperature of your monitor to match the on-screen colors to the printed output colors.

**5000K(D50)** - Colors become slightly more yellowish than [6500K (D65)].

**9300K** - Colors become slightly more bluish than [6500K (D65)].

**NOTE:** On Mac OS X, [RGB Color Temperature] appears when [Feature Sets] is set to [2. Color Adjustment]. This feature is not supported on Mac OS X 10.1.5.

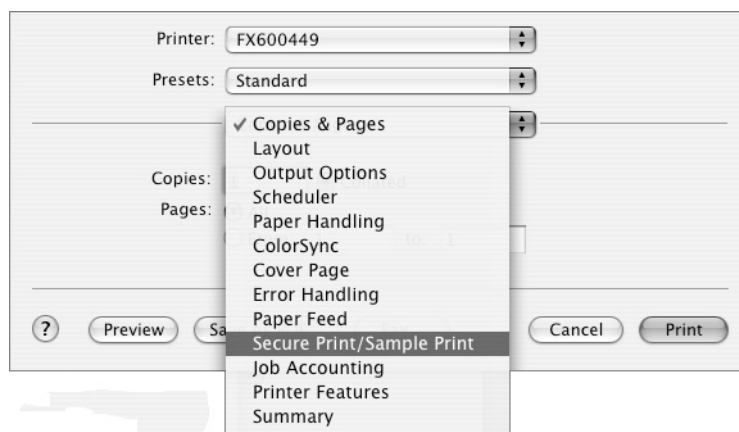
**Low Density, Medium Density, High Density** - Fine-tunes the density of the CMYK (cyan/magenta/yellow/black) toners.

**NOTE:** On Mac OS X, [Low Density], [Medium Density], and [High Density] appear when [Feature Sets] is set to [3. Color Balance C], [4. Color Balance], or [5. Color Balance]. This feature is not supported on Mac OS X 10.1.5.

## Secure Print/Sample Print (Mac OS X 10.3.9/10.4 Only)

The following explains how to configure [Secure Print/Sample Print] on Mac OS X 10.3.9 or 10.4.

1. On an application, click [Print] from the [File] menu.  
The [Print] dialog box appears.
2. Select [Secure Print/Sample Print].



3. Set the desired features.

Printer: FX600449  
Presets: Standard  
Secure Print/Sample Print  
Job Type: Normal Print  
User ID:  
Password:  
Retrieve Document Name: Enter Document Name  
Document Name:  
Restore Defaults  
Preview Save As PDF... Fax... Cancel Print

### Setting Items

The following explains the items that appear on the [Secure Print/Sample Print] tab on Mac OS X 10.3.9 or 10.4.

**NOTE:** Clicking the [Restore Defaults] button restores the defaults.

**Job Type** - Sets the type of your print job to [Normal Print], [Secure Print], or [Sample Print].

**Normal Print** - Prints a job without using the Secure Print or Sample Print feature.

**Secure Print** - Temporarily stores a print job in the printer, rather than printing it immediately, until you manually start the printing from the control panel.

**Sample Print** - Allows you to print a proof copy of a multi-set job and prints the entire sets once the print result has been verified. If you set the print quantity to 1, this setting automatically changes to [Normal Print].

**User ID** - Sets the user ID for the Secure Print or Sample Print feature with up to 8 alphanumeric characters.

**Password** - Sets the password for the user ID with up to 12 alphanumeric characters. Asterisks (\*\*\*) appear instead of text as you enter the password in this text box.

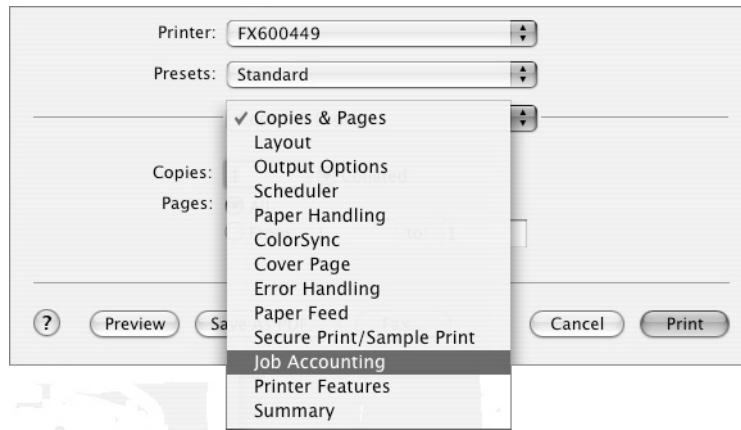
**Retrieve Document Name** - Sets the method of specifying the name of the document that will be stored in the printer using the Secure Print or Sample Print feature. [Auto Retrieve] automatically retrieves the document name from the application from which the document will be printed. If the name exceeds 12 alphanumeric characters, only the first 12 characters will be valid.

**Document Name** - [Retrieve Document Name] is set to [Enter Document Name], enter the document name with up to 12 alphanumeric characters.

## Job Accounting (Mac OS X 10.3.9/10.4 Only)

The following explains how to configure [Job Accounting] on Mac OS X 10.3.9 or 10.4.

1. On an application, click [Print] from the [File] menu.  
The [Print] dialog box appears.
2. Select [Job Accounting].



3. Set the desired features.



### Setting items

The following explains the items that appear on the [Job Accounting] tab on Mac OS X 10.3.9 or 10.4.

**Account Mode** - Sets whether to allow all users or only the administrator to change the login settings.

**Detailed User Settings** - Displays the [Detailed User Settings] dialog box.

**Use Login Settings** - Uses your Macintosh login ID as the job owner name. Clicking the button enters the Macintosh login ID in [Job Owner Name] and makes it unable to change. If the ID exceeds 32 characters, only the first 32 characters will be valid.

**Job Owner Name** - Sets the job owner name with up to 32 alphanumeric characters.

**Password** - Sets the password for the job owner name using 4 to 12 alphanumeric characters.

## Installing the Screen Fonts

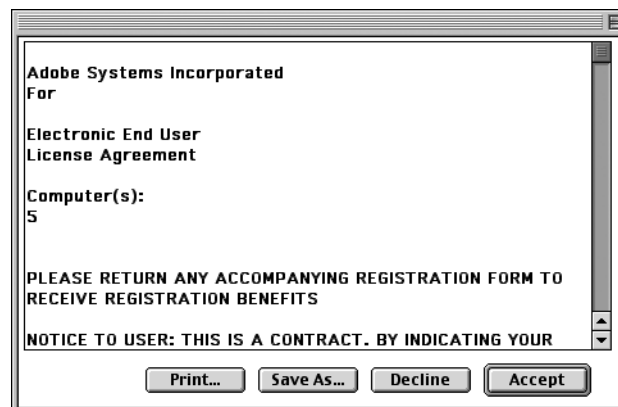
---

This section describes how to install the fonts included in the "Screen Font" folder. Close all other applications before starting the installation. Otherwise, a warning message appears between Steps 5 and 6.

1. Start your Macintosh computer and insert the PostScript Driver Library CD-ROM into the CD-ROM drive.
2. Double-click the [FXOPS-PS] icon followed by the "Screen Font" folder and then [PS3 Fonts Installer]. The following window appears.



3. Click [Continue].  
The license agreement appears.
4. Read the license agreement. If you agree, click [Accept].

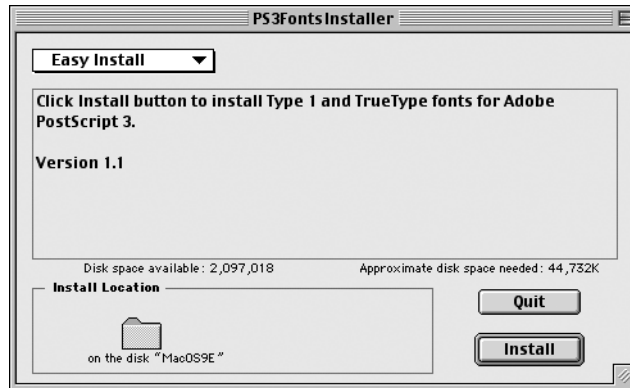


The [PS3FontsInstaller] dialog box appears.

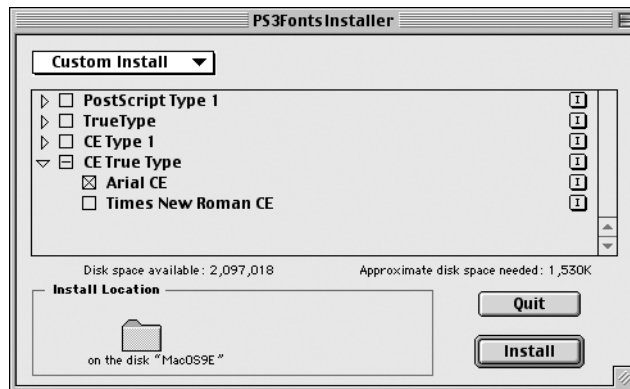


5. Select [Easy Install] or [Custom Install].

**Easy Install** - Installs all fonts in the "Screen Font" folder.



**Custom Install** - Installs the selected fonts only. Click the triangle next to each font category to display the fonts within the category, and select the fonts you want to install. In this example, we will select [Arial CE] under [CE TrueType].



A warning message appears if you did not close other applications before starting the installation.

6. Click [Install].

The installation begins.

When the installation is complete, reboot your computer.

Store the CD-ROM in a safe place.

## Fuji Xerox PS Utility

---

---

Fuji Xerox PS Utility enables remote configuration of the printer from your Macintosh computer. This section describes how to install, uninstall, and use Fuji Xerox PS Utility.

**NOTE:** To use Fuji Xerox PS Utility, make sure to set the printer's EtherTalk port to [Enable] and set the printer correctly in Chooser. See the User Guide on how to enable the EtherTalk port.

### Installing Fuji Xerox PS Utility

---

1. Insert the PostScript Driver Library CD-ROM into your CD-ROM drive.  
The [FXOPS-PS] icon appears on your desktop.
2. Double-click the [FXOPS-PS] icon.  
The [FXOPS-PS] window opens.
3. Copy the "Fuji Xerox PS Utility" folder to your Macintosh hard disk.  
The Fuji Xerox PS Utility is installed.

For information on how to use Fuji Xerox PS Utility, see *Using Fuji Xerox PS Utility on page 98*.

Store the CD-ROM in a safe place.

### Uninstalling Fuji Xerox PS Utility

---

1. Move the "Fuji Xerox PS Utility" folder from your Macintosh hard disk to the [Trash] icon.  
The Fuji Xerox PS Utility is uninstalled.

### Using Fuji Xerox PS Utility

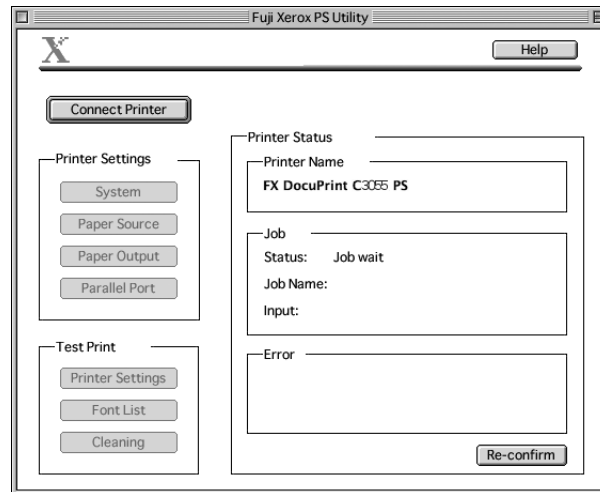
---

The following explains how to activate and configure Fuji Xerox PS Utility.

Fuji Xerox Print Utility allows you to configure the printer's system, paper feeding, and paper delivery settings. It also allows you to download PS files to the printer and set the printer's name and EtherTalk zone.

## Activating Fuji Xerox PS Utility

1. Double-click [Fuji Xerox PS Utility] in the "Fuji Xerox PS Utility" folder. The [Fuji Xerox PS Utility] main window appears. Operate the window using the menu bar and buttons.



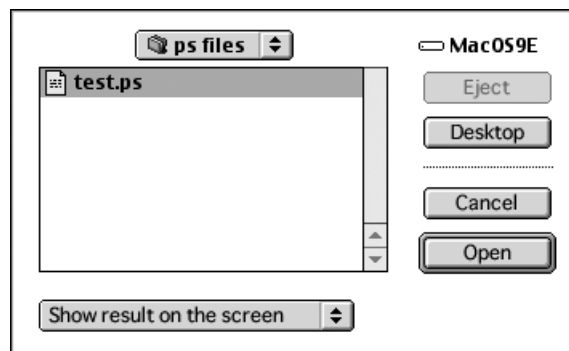
To exit Fuji Xerox PS Utility, click [Quit] on the [File] menu.

## Configuring the Printer Settings

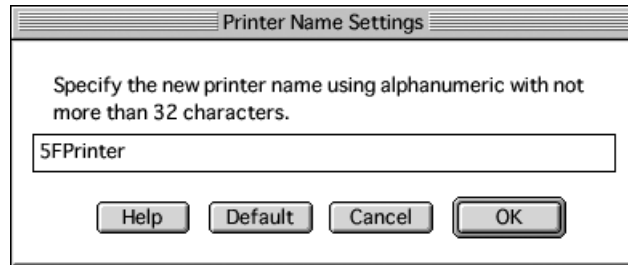
1. Configure the printer settings.  
**NOTE:** For details on each setting item, click [Help].

**Download PS File** - Select [Download PS file] from the [File] menu.

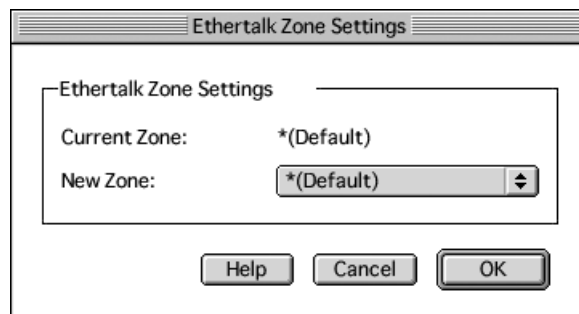
This feature allows you to download PostScript files to the printer. Select the file you want to download and click [Open].



**Printer Name** - Select [Printer Name] from the [Settings] menu. The [Printer Name Settings] dialog box appears. In the dialog box, set a name for the printer.



**EtherTalk** - Select [EtherTalk] from the [Settings] menu. The [EtherTalk Zone Settings] dialog box appears. In the dialog box, verify the current zone or change the zone.



2. When you are finished setting each item, click [OK].  
The printer settings are updated and you will return to the main menu.

# 5 Barcode Settings

This chapter includes the following information:

- About Barcodes
  - Font Types and Character Codes
  - Sample Program and Output Result
- Character Code Tables
  - JAN Character Code Table
  - Code 39 Character Code Table
  - NW7 Character Code Table
  - Code 128 Character Code Table
  - ITF (Interleaved 2 of 5) Character Code Table
  - Customer Barcode Character Code Table
- Barcode Sizes

## About Barcodes

---

This section describes the supported types of barcodes, the character codes assigned to each barcode character, and the size of barcodes that can be printed. The barcode feature comes standard on the DocuPrint C3055 DX and is available on the DocuPrint C3055 if the PostScript software kit is installed.

**NOTE:** This chapter assumes you have basic knowledge of barcodes.

## Font Types and Character Codes

---

The following table lists the supported types of barcodes.

For information about the character codes used to specify each barcode character, see *Character Code Tables on page 103*.

For information about the sizes of barcodes that can be printed, see *Barcode Sizes on page 113*.

Barcode Type	PostScript Font Name	Character Code
JAN	HitachiI THINJANH8-RG	"JAN Character Code Table" (P. 103)
Code 39	HitachiIT-C39H8	"Code 39 Character Code Table" (P. 104)

Barcode Type	PostScript Font Name	Character Code
NW7	HitachiI THINNW7H8-RG	"NW7 Character Code Table" (P. 105)
Code 128	HitachiI THINC128H8-RG	"Code 128 Character Code Table" (P. 106)
ITF (without bearer bars)	HitachiI THINITFH8-RG	"ITF (Interleaved 2 of 5) Character Code Table" (P. 110)
ITF (with bearer bars)	HitachiI THINITFB-RG	
Customer Barcode	HitachiI THINPOSTBC-RG	"Customer Barcode Character Code Table"(P. 112)

Font Type	PostScript Font Name
OCR B LetterPress M	OCRBLetM

**NOTE:** The readability of barcodes is affected largely by the quality of the output paper and the performance of barcode readers. Before using this feature, we recommend you to test it thoroughly in the environment it will be used.

## Sample Program and Output Result

---

The Barcode feature provides a sample program that prints a typical barcode and a PDF file of its output result. Use this sample as a reference when printing barcodes.

➤ **Directory of the Sample Program/Output Result (PDF)**

"manual" folder > "sample" folder on the PostScript Driver Library CD-ROM

➤ **Name of the Sample Program**

Sample.ps

➤ **PDF File Name of the Output Result**

Sample.pdf

## Character Code Tables

This section describes the character codes used when specifying each barcode character.

### JAN Character Code Table

The table below lists the characters codes used when printing JAN barcode characters.

Character	Character Code					
	Left-side Odd Parity		Left-side Even Parity		Right-side Even Parity	
	HEX Notation	ASCII Notation	HEX Notation	ASCII Notation	HEX Notation	ASCII Notation
0	30	0	41	A	4B	K
1	31	1	42	B	4C	L
2	32	2	43	C	4D	M
3	33	3	44	D	4E	N
4	34	4	45	E	4F	O
5	35	5	46	F	50	P
6	36	6	47	G	51	Q
7	37	7	48	H	52	R
8	38	8	49	I	53	S
9	39	9	4A	J	54	T
Left-side guard bar	22	"				
Right-side guard bar	23	#				
Center bar	21	!				

## Code 39 Character Code Table

The table below lists the characters codes used when printing Code 39 barcode characters.

Character	Character Code		Character	Character Code		Character	Character Code	
	HEX Notation	ASCII Notation		HEX Notation	ASCII Notation		HEX Notation	ASCII Notation
\$	24	\$	8	38	8	M	4D	M
%	25	%	9	39	9	N	4E	N
*	2A	*	(SP)	20	SP	O	4F	O
+	2B	+	A	41	A	P	50	P
-	2D	-	B	42	B	Q	51	Q
.	2E	.	C	43	C	R	52	R
/	2F	/	D	44	D	S	53	S
0	30	0	E	45	E	T	54	T
1	31	1	F	46	F	U	55	U
2	32	2	G	47	G	V	56	V
3	33	3	H	48	H	W	57	W
4	34	4	I	49	I	X	58	X
5	35	5	J	4A	J	Y	59	Y
6	36	6	K	4B	K	Z	5A	Z
7	37	7	L	4C	L	(SP)	40	@



## NW7 Character Code Table

The table below lists the characters codes used when printing NW7 barcode characters.

Character	Character Code		Character	Character Code		Character	Character Code	
	HEX Notation	ASCII Notation		HEX Notation	ASCII Notation		HEX Notation	ASCII Notation
\$	24	\$	0	30	0	A	41	A
+	2B	+	1	31	1	B	42	B
-	2D	-	2	32	2	C	43	C
.	2E	.	3	33	3	D	44	D
/	2F	/	4	34	4	A	61	a
			5	35	5	B	62	b
			6	36	6	C	63	c
			7	37	7	D	64	d
			8	38	8			
			9	39	9			
			:	3A	:			

## Code 128 Character Code Table

The table below lists the characters codes used when printing Code 128 barcode characters.

Value	Character Code			Character Code	
	CODE A	CODE B	CODE C	HEX Notation	ASCII Notation
0	SP	SP	00	20	SP
1	!	!	01	21	!
2	"	"	02	22	"
3	#	#	03	23	#
4	\$	\$	04	24	\$
5	%	%	05	25	%
6	&	&	06	26	&
7	'	'	07	27	'
8	(	(	08	28	(
9	)	)	09	29	)
10	*	*	10	2A	*
11	+	+	11	2B	+
12	,	,	12	2C	,
13	-	-	13	2D	-
14	.	.	14	2E	.
15	/	/	15	2F	/
16	0	0	16	30	0
17	1	1	17	31	1
18	2	2	18	32	2
19	3	3	19	33	3
20	4	4	20	34	4
21	5	5	21	35	5
22	6	6	22	36	6
23	7	7	23	37	7
24	8	8	24	38	8
25	9	9	25	39	9
26	:	:	26	3A	:
27	;	;	27	3B	;
28	<	<	28	3C	<
29	=	=	29	3D	=

Value	Character Code			Character Code	
	CODE A	CODE B	CODE C	HEX Notation	ASCII Notation
30	>	>	30	3E	>
31	?	?	31	3F	?
32	@	@	32	40	@
33	A	A	33	41	A
34	B	B	34	42	B
35	C	C	35	43	C
36	D	D	36	44	D
37	E	E	37	45	E
38	F	F	38	46	F
39	G	G	39	47	G
40	H	H	40	48	H
41	I	I	41	49	I
42	J	J	42	4A	J
43	K	K	43	4B	K
44	L	L	44	4C	L
45	M	M	45	4D	M
46	N	N	46	4E	N
47	O	O	47	4F	O
48	P	P	48	50	P
49	Q	Q	49	51	Q
50	R	R	50	52	R
51	S	S	51	53	S
52	T	T	52	54	T
53	U	U	53	55	U
54	V	V	54	56	V
55	W	W	55	57	W
56	X	X	56	58	X
57	Y	Y	57	59	Y
58	Z	Z	58	5A	Z
59	[	[	59	5B	[
60	\	\	60	5C	\
61	]	]	61	5D	]
62	^	^	62	5E	^
63	_	_	63	5F	_
64	NUL	`	64	60	`

Value	Character Code			Character Code	
	CODE A	CODE B	CODE C	HEX Notation	ASCII Notation
65	SOH	a	65	61	a
66	STX	b	66	62	b
67	ETX	c	67	63	c
68	EOT	d	68	64	d
69	ENQ	e	69	65	e
70	ACK	f	70	66	f
71	BEL	g	71	67	g
72	BS	h	72	68	h
73	HT	l	73	69	l
74	LF	j	74	6A	j
75	VT	k	75	6B	k
76	FF	l	76	6C	l
77	CR	m	77	6D	m
78	SO	n	78	6E	n
79	SI	o	79	6F	o
80	DLE	p	80	70	p
81	DC1	q	81	71	q
82	DC2	r	82	72	r
83	DC3	s	83	73	s
84	DC4	t	84	74	t
85	NAK	u	85	75	u
86	SYN	v	86	76	v
87	ETB	w	87	77	w
88	CAN	x	88	78	x
89	EM	y	89	79	y
90	SUB	z	90	7A	z
91	ESC	{	91	7B	{
92	FS		92	7C	
93	GS	}	93	7D	}
94	RS	~	94	7E	~
95	US	DEL	95	7F	DEL
96	FNC 3	FNC 3	96	A1	
97	FNC 2	FNC 2	97	A2	
98	SHIFT	SHIFT	98	A3	
99	CODE C	CODE C	99	A4	

---

Value	Character Code			Character Code	
	CODE A	CODE B	CODE C	HEX Notation	ASCII Notation
100	CODE B	FNC 4	CODE B	A5	
101	FNC 4	CODE A	CODE A	A6	
102	FNC 1	FNC 1	FNC 1	A7	
103	START(CODE A)			A8	
104	START(CODE B)			A9	
105	START(CODE C)			AA	
106	STOP			AB	

## ITF (Interleaved 2 of 5) Character Code Table

The table below lists the characters codes used when printing ITF barcode characters.

Character	Character Code		Character	Character Code		Character	Character Code	
	HEX Notation	ASCII Notation		HEX Notation	ASCII Notation		HEX Notation	ASCII Notation
00	21	!	30	3F	?	60	5D	]
01	22	"	31	40	@	61	5E	^
02	23	#	32	41	A	62	5F	_
03	24	\$	33	42	B	63	60	`
04	25	%	34	43	C	64	61	a
05	26	&	35	44	D	65	62	b
06	27	'	36	45	E	66	63	c
07	28	(	37	46	F	67	64	d
08	29	)	38	47	G	68	65	E
09	2A	*	39	48	H	69	66	F
10	2B	+	40	49	I	70	67	G
11	2C	,	41	4A	J	71	68	H
12	2D	-	42	4B	K	72	69	I
13	2E	.	43	4C	L	73	6A	J
14	2F	/	44	4D	M	74	6B	K
15	30	0	45	4E	N	75	6C	L
16	31	1	46	4F	O	76	6D	M
17	32	2	47	50	P	77	6E	N
18	33	3	48	51	Q	78	6F	O
19	34	4	49	52	R	79	70	P
20	35	5	50	53	S	80	71	Q
21	36	6	51	54	T	81	72	R
22	37	7	52	55	U	82	73	S
23	38	8	53	56	V	83	74	T
24	39	9	54	57	W	84	75	U
25	3A	:	55	58	X	85	76	V
26	3B	;	56	59	Y	86	77	W
27	3C	<	57	5A	Z	87	78	X
28	3D	=	58	5B	[	88	79	Y
29	3E	>	59	5C	\	89	7A	Z
90	7B	{	94	A1	DEL	98	A5	

Character	Character Code		Character	Character Code		Character	Character Code	
	HEX Notation	ASCII Notation		HEX Notation	ASCII Notation		HEX Notation	ASCII Notation
91	7C		95	A2		99	A6	
92	7D	}	96	A3		START	A7	
93	7E	~	97	A4		STOP	A8	

ITF barcodes represent a pair of a BAR character (character denoted with a bar) and a SPACE character (character denoted with a space) with one character code.

A single START character or STOP character is represented with one character code.

Example:

To print a pair of a BAR character representing "3" and a SPACE character representing "7", specify "46" (HEX notation).

To print a pair of a BAR character representing "7" and a SPACE character representing "3", specify "6A" (HEX notation).

## Customer Barcode Character Code Table

---

The table below lists the characters codes used when printing customer barcode characters.

Character	Character Code		Character	Character Code	
	HEX Notation	ASCII Notation		HEX Notation	ASCII Notation
START	3C	<	CC1	61	a
STOP	3E	>	CC2	62	b
-	2D	-	CC3	63	c
0	30	0	CC4	64	d
1	31	1	CC5	65	e
2	32	2	CC6	65	f
3	33	3	CC7	67	g
4	34	4	CC8	68	h
5	35	5			
6	36	6			
7	37	7			
8	38	8			
9	39	9			



## Barcode Sizes

The formulas for determining the approximate print sizes of barcodes are in the following table.

The print sizes of barcodes vary depending on the characteristics of the printer, print resolution, output paper, and other factors even when the same program is used. The sizes derived from the following formulas do not guarantee the actual sizes of barcodes. Use them only as reference.

Barcodes type	Formula	
	Width	Height
JAN (standard)	$P \times 0.502$	$P \times 0.352$
	Side margins not included.	Indicates the height of the guard bar.
JAN (short version)	$P \times 0.354$	$P \times 0.352$
	Side margins not included.	Indicates the height of the guard bar.
Code 39	$P \times (C + 2) \times 0.106$	$P \times 0.352$
	Intercharacter gap of the left and right sides not included. "C" includes the checkdigit.	
NW7	$P \times (C1 \times 0.132 + C2 \times 0.148 - 0.026)$	$P \times 0.352$
	Intercharacter gap of the left and right sides not included. "C1" and "C2" include the checkdigit.	
Code 128	$P \times (C \times 0.081 + 0.096)$	$P \times 0.352$
	Formula for CODE C.	
ITF (without bearer bar)	$P \times ((C/2 \times 0.175) + 0.093)$	$P \times 0.352$
	Quiet zone not included. "C" includes the checkdigit.	
ITF (with bearer bar)	$P \times ((C/2 \times 0.137) + 0.323)$	$P \times 0.352$
	Bearer bar and quiet zone included. "C" includes the checkdigit.	Bearer bar included.
Customer Barcode	$P \times 7.297$	$P \times 0.342$
	Spaces before the black bar of START code and after the black bar of the STOP code are not included.	Indicates the height of the long bar.

P: Font size (point)

C: Number of characters

C1: Number of characters (0,1,2,3,4,5,6,7,8,9,-,\$)

C2: Number of characters (:/,.,+,A,B,C,D)



# 6 Appendix

## Available Fonts

---

The PostScript fonts available on the printer are as follows.

**NOTE:** Installing the Japanese font kit to the printer allows you to use Japanese PostScript fonts (two MORISAWA fonts and two HEISEI fonts).

### 136 European Fonts and Barcode/OCR-B Fonts

- Albertus
- Albertus Italic
- Albertus Light
- Antique Olive Bold
- Antique Olive Compact
- Antique Olive Italic
- Antique Olive Roman
- Apple Chancery
- Arial
- Arial Bold
- Arial Bold Italic
- Arial Italic
- Bodoni Bold
- Bodoni Bold Italic
- Bodoni Italic
- Bodoni Poster
- Bodoni Poster Compressed
- Bodoni Roman
- Carta
- Chicago
- Clarendon Bold
- Clarendon Light
- Clarendon Roman
- Cooper Black
- Cooper Black Italic

- Copperplate Gothic 32BC
- Copperplate Gothic 33BC
- Coronet
- Courier
- Courier Bold
- Courier Bold Oblique
- Courier Oblique
- Eurostile Bold
- Eurostile Bold Extended No. 2
- Eurostile Extended No. 2
- Eurostile Medium
- Geneva
- Gill Sans
- Gill Sans Bold
- Gill Sans Bold Italic
- Gill Sans Condensed
- Gill Sans Condensed Bold
- Gill Sans Extra Bold
- Gill Sans Italic
- Gill Sans Light
- Gill Sans Light Italic
- Goudy Bold
- Goudy Bold Italic
- Goudy Extra Bold
- Goudy Oldstyle
- Goudy Oldstyle Italic
- Helvetica
- Helvetica Bold
- Helvetica Bold Oblique
- Helvetica Condensed
- Helvetica Condensed Bold
- Helvetica Condensed Bold Oblique
- Helvetica Condensed Oblique
- Helvetica Narrow
- Helvetica Narrow Bold
- Helvetica Narrow Bold Oblique

- Helvetica Narrow Oblique
- Helvetica Oblique
- Hoefler Ornaments
- Hoefler Text
- Hoefler Text Black
- Hoefler Text Black Italic
- Hoefler Text Italic
- ITC Avant Garde Gothic Book
- ITC Avant Garde Gothic Book Oblique
- ITC Avant Garde Gothic Demi
- ITC Avant Garde Gothic Demi Oblique
- ITC Bookman Demi
- ITC Bookman Demi Italic
- ITC Bookman Light
- ITC Bookman Light Italic
- ITC Lubalin Graph Book
- ITC Lubalin Graph Book Oblique
- ITC Lubalin Graph Demi
- ITC Lubalin Graph Demi Oblique
- ITC Mona Lisa Recut
- ITC Zapf Chancery Medium Italic
- ITC Zapf Dingbats
- Joanna
- Joanna Bold
- Joanna Bold Italic
- Joanna Italic
- Letter Gothic
- Letter Gothic Bold
- Letter Gothic Bold Slanted
- Letter Gothic Slanted
- Marigold
- Monaco
- New Century Schoolbook Bold
- New Century Schoolbook Bold Italic
- New Century Schoolbook Italic
- New Century Schoolbook Roman

- New York
- Optima Bold
- Optima Bold Italic
- Optima Italic
- Optima Roman
- Oxford
- Palatino Bold
- Palatino Bold Italic
- Palatino Italic
- Palatino Roman
- Stempel Garamond Bold
- Stempel Garamond Bold Italic
- Stempel Garamond Italic
- Stempel Garamond Roman
- SymbolTekton Regular
- Times BoldTimes Bold Italic
- Times ItalicTimes Roman
- Times New Roman
- Times New Roman Bold
- Times New Roman Bold Italic
- Times New Roman Italic
- Univers 45 Light
- Univers 45 Light Oblique
- Univers 53 Extended
- Univers 53 Extended Oblique
- Univers 55Univers 55 Oblique
- Univers 57 Condensed
- Univers 57 Condensed Oblique
- Univers 63 Extended Bold
- Univers 63 Extended Bold Oblique
- Univers 65 Bold
- Univers 65 Bold Oblique
- Univers 67 Condensed Bold
- Univers 67 Condensed Bold Oblique
- Wingdings
- OCR-B Letterpress M

- Hitachi-IT Barcode Code39 H8
- Hitachi-IT Barcode Code128 H8
- Hitachi-IT Barcode ITFB
- Hitachi-IT Barcode ITF H8
- Hitachi-IT Barcode JAN H8
- Hitachi-IT Barcode NW-7 H8
- Hitachi-IT Barcode POSTBC

## **Notes and Restrictions**

---

---

### **Print Driver**

The notes and restrictions that apply to each Post Script print driver is described in "Readme.txt" in the PostScript Driver Library CD-ROM. Make sure to read the file before installing the print driver to your computer.

### **Troubleshooting**

Refer to the User Guide for the error codes and error messages that appear on the control panel and for instructions on how to clear paper jams.





# 7 Index

## A

Adobe Acrobat Reader ..11, 30, 49, 72  
 Adobe Type Manager (ATM)  
 ..... 11, 29, 72  
 AdobePS print driver (ver. 5.2.2) ...29  
 AdobePS print driver (ver. 8.5.1,  
 8.7.0, and 8.8) .....71  
 AdobePS print driver (ver.4.5.3) .....11  
 Advanced tab ..... 40, 62

## B

barcode .....101  
 barcode sizes .....113

## C

Code 128 character code table ....106  
 Code 39 character code table .....104  
 Color Settings tab .....23  
 Configuration tab ..... 18, 38, 60  
 Customer Barcode character code  
 table .....112

## D

Device Settings tab ..... 37, 59  
 Download PS File .....99

## E

error codes .....119  
 error messages .....119  
 EtherTalk .....100

## F

fonts, supported .....115  
 Fuji Xerox PPD Installer .....72  
 Fuji Xerox PS Utility ..... 72, 99

## I

Image Options tab .....66  
 Installable Options .....86

## J

JAN character code table ..... 103

## L

Layout tab .....68

## M

Mac OS 9.x or earlier .....86  
 Mac OS X .....87, 89

## N

notes and restrictions .....119  
 NW7 character code table ..... 105

## O

online help .....69  
 Options tab .....22  
 Output Settings tab .....25

## P

Paper/Output tab .....64  
 PPD ..... 11, 29, 49, 71  
 Printer Features .....88  
 Printer Name .....100  
 Printer Specific Options .....88

## R

Readme.txt ..... 11, 30, 49, 72

**S**

screen fonts .....72, 96  
supported fonts ..... 115

**W**

Windows 2000 ..... 49  
Windows 95 ..... 12  
Windows 98 ..... 12  
Windows Me ..... 12  
Windows NT 4.0 ..... 29  
Windows Server 2003 ..... 49  
Windows XP ..... 49

**DocuPrint C3055/C3055 DX PostScript® User Guide**

Fuji Xerox Printing Systems Co., Ltd.

ME3680E2-1 (Edition 1)

November 2006

Copyright© 2006 by Fuji Xerox Co., Ltd.