

DocuPrint C3055/C3055 DX

PCL Emulation Setting Guide

Adobe, the Adobe logo, Acrobat, Acrobat Reader, and PostScript are either registered trademarks or trademarks of Adobe Systems Incorporated in the United States and/or other countries.
NetWare is a registered trademark of Novell, Inc in the United States and other countries.
All product /brand names are trademarks or registered trademarks of the respective holders.

Important

1. This manual is copyrighted with all rights reserved. Under the copyright laws, this manual may not be copied or modified in whole or part, without the written consent of the publisher.
2. Parts of this manual are subject to change without prior notice.
3. We welcome any comments on ambiguities, errors, omissions, or missing pages.
4. Never attempt any procedure on the machine that is not specifically described in this manual. Unauthorized operation can cause faults or accidents. Fuji Xerox is not liable for any problems resulting from unauthorized operation of the equipment.

XEROX, The Document Company, and the digital X are registered trademarks of Xerox Corporation.
All Xerox and Fuji Xerox product names are either registered trademarks or trademarks of
Xerox Corporation and Fuji Xerox Co., Ltd.

Preface

Thank you for purchasing the DocuPrint C3055/C3055 DX.

This guide provides information about the PCL5c and PCL6 emulation of the printer.

To get the most out of this printer and to use it effectively, please read this guide as necessary.

This guide assumes you are familiar with the basic operation of the printer and your operating environment.

Contents

Preface.....	3
Types of Manuals.....	5
Using This Guide	6
1 Using Emulation	7
1.1 About Emulation	7
Emulation Mode	7
Host Interfaces and Emulation	7
Switching Print Languages	8
Mode Menu Screen	8
1.2 About Fonts	9
Supported Fonts	9
1.3 Paper Eject Function	11
Forcibly Ejecting the Remaining Data	11
2 Setting the PCL Mode	12
2.1 Control Panel Menus	12
Common Menu Item Related to the PCL Mode	12
PCL Mode Menu	13
2.2 Setting the PCL Mode Menu	14
PCL Mode Menu Items	14
Setting the PCL Mode Menu	16
2.3 PCL Mode Reports/Lists.....	17
Printer Settings	17
PCL Font List	17
PCL Macro List	17
Index	18
Mode Menu (PCL)	

Types of Manuals

Setup Guide	Provides step-by-step instructions on how to set up your printer.
Quick Reference Guide	Provides information such as how to get ready to print, basic operating instructions, and troubleshooting tips. Refer to the 'User Guide' for more details and information not covered in this guide.
User Guide (PDF)	Describes how to get ready to print and set various print features. It also covers the control panel menus, troubleshooting tips, and maintenance information. <ul style="list-style-type: none">• This guide is on the CD-ROM of the Driver CD Kit under [Model-specific Manual (PDF Document)].
CD-ROM Documentation (HTML)	Describes how to set up the printer's operating environment and to install a print driver and various Fuji Xerox software. <ul style="list-style-type: none">• This guide is on the CD-ROM of the Driver CD Kit.
Emulation Setting Guide (PDF) (this guide)	Contains information about the ESC/P and PCL emulation modes. <ul style="list-style-type: none">• This guide is on the CD-ROM of the Driver CD Kit under [Model-specific Manual (PDF Document)].
PostScript User Guide	Describes how to set up your printer as a PostScript® printer and the features that can be configured on your print driver. <ul style="list-style-type: none">• This guide is on the PostScript Driver Library CD-ROM.
Installation guides for the optional accessories	Most optional accessories (sold separately) come with installation guides.

Note

- To view PDF files, you must have Adobe® Acrobat® Reader® or Adobe® Reader® installed on your computer. If you do not have it installed, install it from the CD-ROM of the Driver CD Kit.

Using This Guide

Organization

This guide is organized into the following chapters. The summary of each chapter is as follows:

1. Using Emulation

Describes the fonts and interfaces supported and the printer emulated in the PCL emulation mode.

2. Setting the PCL Mode

Describes how to configure the PCL emulation mode.

Conventions

1. In this guide, personal computers and workstations are collectively called "computers".

2. The following terms are used throughout this guide:

Important : Important information that must be read and followed.

Note : Additional information that merits emphasis.

Refer to " " : References within this guide.

Refer to ' ' : References to other publications.

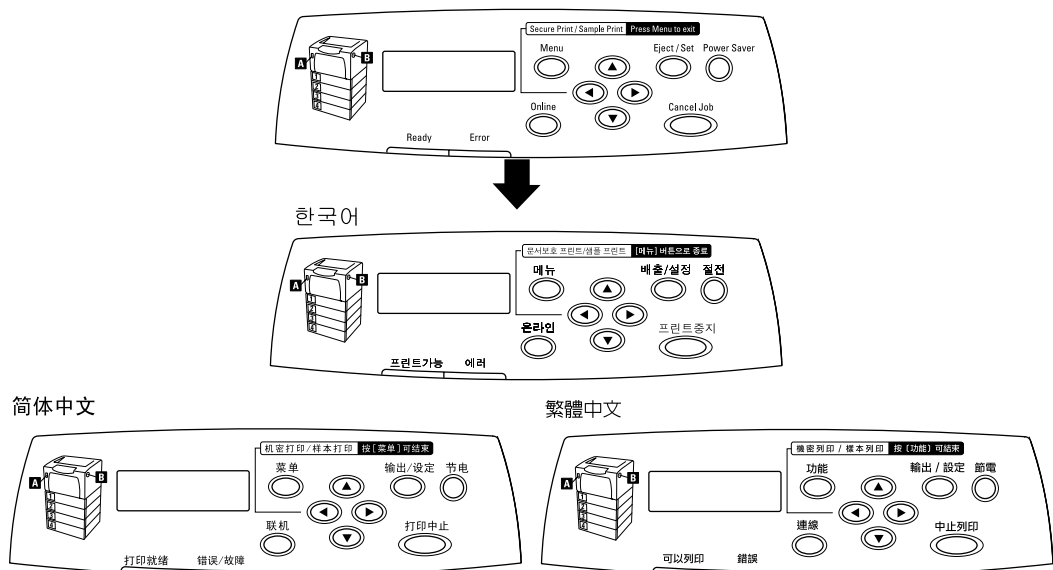
3. The following symbols are used throughout this guide:

[] : The names of the menu items on your computer or the printer's control panel display, or the names of the reports/lists that can be printed from the printer.

< > : The names of the keys on your computer keyboard or the hardware buttons or lamps on the printer's control panel.

> : The hierarchies of the menus on the control panel display, print driver, or CentreWare Internet Services.

4. In this guide, the control panel buttons/lamps are presented in English. If you placed the control panel labels (included with the printer) on your control panel, use the following figure to identify the names of the buttons/lamps in your language.



5. In this manual, PCL5c and PCL6 are both referred to as "PCL".

1 Using Emulation

1.1 About Emulation

This chapter explains the PCL emulation of the printer.

Print data is data written based on certain rules (grammars). These rules (grammars) are called "print languages".

The printer supports two types of print languages: page description language and emulation. Page description language is a language that describes images on a page basis. Emulation is the ability of this printer to imitate print results of other printers.

Emulation Mode

When printing data written in a language other than the page description languages supported by the printer, switch the printer to an emulation mode. The printer has multiple emulation modes and PCL is one of them. In the PCL emulation mode, the printer emulates the following printer.

Emulation Mode	Emulated Printer
PCL emulation mode (PCL mode)	HP-CLJ4600

Host Interfaces and Emulation

Each host interface supports different print languages. The following host interfaces support PCL emulation:

- Parallel port
- LPD port
- NetWare port
- SMB port
- IPP port
- USB port
- Port9100 port

Note

- To use NetWare, SMB, or IPP port, the network expansion card (optional) must be installed.

Switching Print Languages

The machine supports multiple emulation modes and can switch between multiple print languages.

There are three methods of switching print languages.

Switching Languages by Commands

If the printer receives a command that explicitly tells which language to use, the printer switches to that language.

Switching Languages Automatically

The printer examines data received by its host interface and automatically determines and switches to the appropriate language.

Switching Languages by Interface

The printer can be programmed to switch to a particular language for a particular host interface. This can be done by setting a language for each interface on the control panel.

Mode Menu Screen

The menu items for the emulation modes can be accessed from the mode menus. To access the mode menu for the PCL emulation mode, press the <Menu> button and select [Print Language] > [PCL]. The following is the first screen of the PCL mode menu.



Refer to

- For more information about items for the PCL mode menu, refer to “2 Setting the PCL Mode” (P. 12).

1.2 About Fonts

This section explains the fonts that can be used in the PCL emulation mode.

Supported Fonts

The following fonts can be used in the PCL emulation mode.

Note

- PCL 5 can be used also by downloading it on the hard disk (optional).
- The supported fonts and their print samples can be viewed on the [PCL Font List]. For information about the [PCL Font List], refer to “2.3 PCL Mode Reports/Lists” (P. 17).

Outline Fonts

- CG Times
- CG Times Italic
- CG Times Bold
- CG Times Bold Italic
- Univers Medium
- Univers Medium Italic
- Univers Bold
- Univers Bold Italic
- Univers Medium Condensed
- Univers Medium Condensed Italic
- Univers Condensed Bold
- Univers Condensed Bold Italic
- Antiq Olive
- Antiq Olive Italic
- Antiq Olive Bold
- CG Omega
- CG Omega Italic
- CG Omega Bold
- CG Omega Bold Italic
- Garamond Antiqua
- Garamond Kursiv
- Garamond Halbfett
- Garamond Kursiv Halbfett
- Courier
- Courier Italic
- Courier Bold
- Courier Bold Italic
- Letter Gothic
- Leter Gothic Italic
- Letter Gothic Bold
- Albertus Medium
- Albertus Extra Bold
- Clarendon Condensed Bold
- Coronet
- Marigold
- Arial
- Arial Italic
- Arial Bold
- Arial Bold Italic
- Times New Roman
- Times New Roman Italic
- Times New Roman Bold
- Times New Roman Bold Italic
- Symbol
- Wingdings
- Times Roman
- Times Italic
- Times Bold
- Times Bold Italic
- Helvetica
- Helvetica Oblique
- Helvetica Bold
- Helvetica Bold Oblique
- CourierPS

- CourierPS Oblique
- CourierPS Bold
- CourierPS Bold Oblique
- SymbolPS
- Palatino Roman
- Palatino Italic
- Palatino Bold
- Palatino Bold Italic
- ITC Bookman Light
- ITC Bookman Light Italic
- ITC Bookman DemiBold
- ITC Bookman DemiBold Italic
- Helvetica Narrow
- Helvetica Narrow Oblique
- Helvetica Narrow Bold
- Helvetica Narrow Bold Oblique
- New Century Schoolbook Roman
- New Century Schoolbook Italic
- New Century Schoolbook Bold
- New Century Schoolbook Bold Italic
- ITC Avant Garde Book
- ITC Avant Garde Book Oblique
- ITC Avant Garde DemiBold
- ITC Avant Garde DemiBold Oblique
- ZapfChancery Medium Italic
- ZapfDingbats

Bitmap Font

- LinePrinter

1.3 Paper Eject Function

The section explains the paper eject function of the printer.

Forcibly Ejecting the Remaining Data

In the PCL emulation mode, the printer does not eject a job unless it receives a full page worth of data. When the host interface is Parallel or USB, and if only a portion of a page is received, the printer does not eject the page. The printer waits for the data and shows [Data Wait] on the display until the time set under [Time-out] elapses.

In such situation, you can forcibly print the page without waiting for the time-out period to elapse.

Use the following steps when forcibly ejecting the data remained in the printer.

Note

- If you send a job to the printer while the display says [Data Wait], the job may not be printed successfully. Send a job to the printer after forcibly ejecting the current job or after the time-out period has elapsed.

Refer to

- For information about the [Time-out] feature, refer to the 'User Guide'.

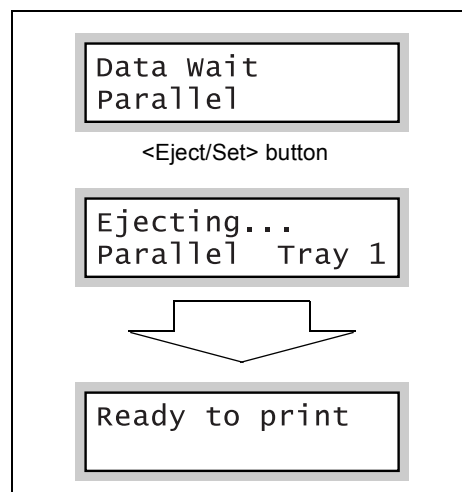
1. Press the <Eject/Set> button when the display is in the state shown on the right.

The printing starts.

When the printing is finished, the display reads [Ready to print].

Important

- When [Print Mode] (common menu) is set to [Auto], you cannot force-eject a job since the display does not show [Data Wait].



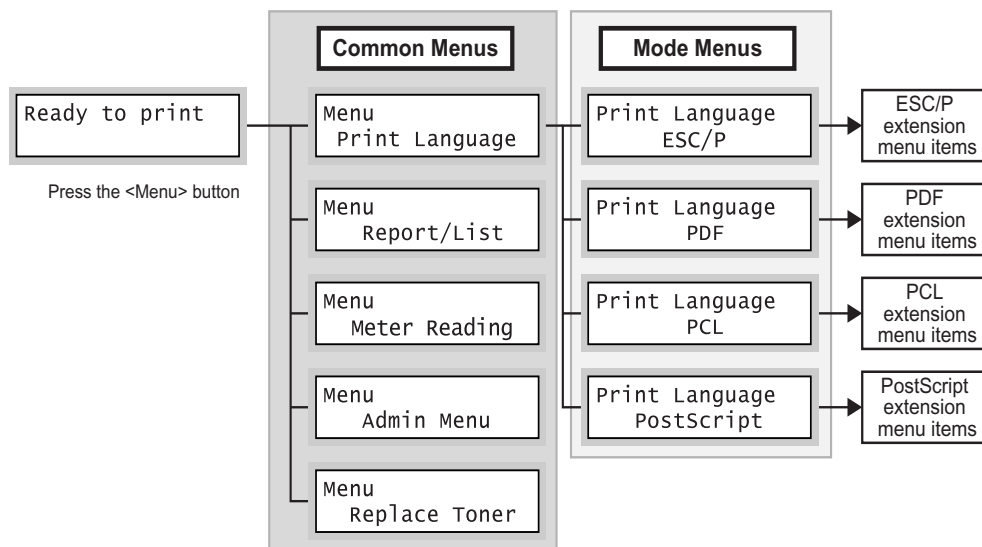
2 Setting the PCL Mode

2.1 Control Panel Menus

There are two types of control panel menus: the mode menus and common menus. The mode menus are the menus that relate to the emulation modes. The common menu are the menus for all the other features of the printer.

Note

- On the DocuPrint C3055, [PostScript] (mode menu) is displayed only if the PostScript software kit (optional) is installed.



Common Menu Item Related to the PCL Mode

The common menu item that relates to the PCL emulation mode is as follows:

Refer to

- For more information about the common menu items, refer to the 'User Guide'.

■ **Network / Port**

To display this item, select [Admin Menu] > [Network / Port].

This item allows you to set the ports to be used in the PCL emulation mode.

- Port Status (Parallel/LPD/NetWare/SMB/IPP/USB/Port9100)
Enables the ports to be used in the PCL emulation mode. By default, all ports are set to [Enable].
- Print Mode (Parallel/LPD/NetWare/SMB/IPP/USB/Port9100)
Sets the print mode of each port to [PCL] or [Auto]. By default, all ports are set to [Auto].

Note

- [Print Mode] allows you to set the method of processing data received from host interfaces. If you set this to [PCL], the printer will not auto-switch languages as described in "Switching Languages Automatically" (P. 8).

PCL Mode Menu

The PCL mode menu allows you to configure the PCL emulation mode.

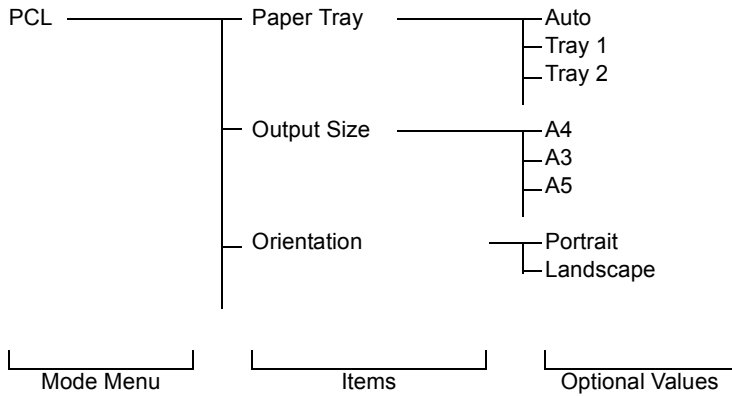
You can change the settings of the PCL mode menu even when the printer is printing. The changes, however, will be applied not to the job being printed, but from a job after it.

The mode menu is organized into the following structure.

- mode menu > items > optional values

Note

- Some "items" may be divided into item 1, item 2, item 3....
(They will be simply referred to as "items" unless otherwise noted.)



The above is a portion of the hierarchical structure of the PCL mode menu.

Refer to

- For information about the items in the PCL mode menu, refer to "2.2 Setting the PCL Mode Menu" (P. 14).

2.2 Setting the PCL Mode Menu

This section explains the items in the PCL mode menu and how to configure them.

PCL Mode Menu Items

The items that can be set in the PCL mode menu are as follows:

Paper Tray

Sets the paper tray to be used when printing.

The following options are available:

[Auto] (default)

When [Auto] is selected, the printer searches for the paper tray that contains the paper that matches the [Output Size] setting and automatically feeds paper from that paper tray.

[Tray 1]

[Tray 2]

[Tray 3]

[Tray 4]

[Bypass Tray]

Note

- When [Auto] is selected, and if the paper of the same size is loaded in more than one paper tray, the printer selects a tray based on the tray priority setting of a common menu.
- [Tray 2] - [Tray 4] are displayed only if the 500 sheet feeders (optional) are installed.

Output Size

Sets the size of the paper to be used when printing.

The following options are available:

[A4] (default)

[A3], [A5], [B4], [B5]

[8.5 x 11], [8.5 x 13], [8.5 x 14], [11 x 17], [7.25 x 10.5]

[Env 4.1 x 9.5], [Env 3.9 x 7.5], [Env 110 x 220mm], [Env 162 x 229mm]

[100 x 148mm]

[Custom]

When [Custom] is selected, set the print orientation to [Portrait (Y)] or [Landscape (X)].

Orientation

Sets the print orientation to [Portrait] (default) or [Landscape].

2 Sided

Sets whether or not to print 2 sided by selecting [On] or [Off] (default).

When [On] is selected, set the binding orientation to [Flip Long Edge] or [Flip Short Edge].

Note

- On the DocuPrint C3055, this item is displayed only if the duplex unit (optional) is installed.

Font

Sets the font to be used when printing. The default is [Courier].

Symbol Set

Sets the font for symbols. The default is [ROMAN-8].

Font Size

Sets the font size within the range of 4.00 to 50.00 pt in increments of 0.25 pt. The default is [12.00].

Font Pitch

Sets the font pitch (number of characters per inch) within the range of 6.00 to 24.00 cpi in increments of 0.01 cpi. The default is [10.00].

Form Line

Sets the form line (number of lines within one form) within the range of 5 to 128 lines in increments of 1. The default is [64].

Quantity

Sets the number of copies to be printed within the range of 1 to 999. The default is [1 Set(s)].

Image Enhance

Image Enhance is a feature that artificially increases resolution by smoothing out transitions between black and white and reducing jagged appearance. Set whether or not to enable Image Enhance by selecting [On] (default) or [Off].

HexDump

HexDump is a feature that prints the contents of data in ASCII codes (hexadecimal format). Set whether or not to enable HexDump by selecting [Enable] or [Disable] (default).

Draft Mode

Enabling Draft Mode uses less toner when printing. This mode increases print speed but decreases print quality. Set whether or not to enable Draft Mode by selecting [Enable] or [Disable] (optional).

Output Color

Sets the output color to [Color] (default) or [Black].

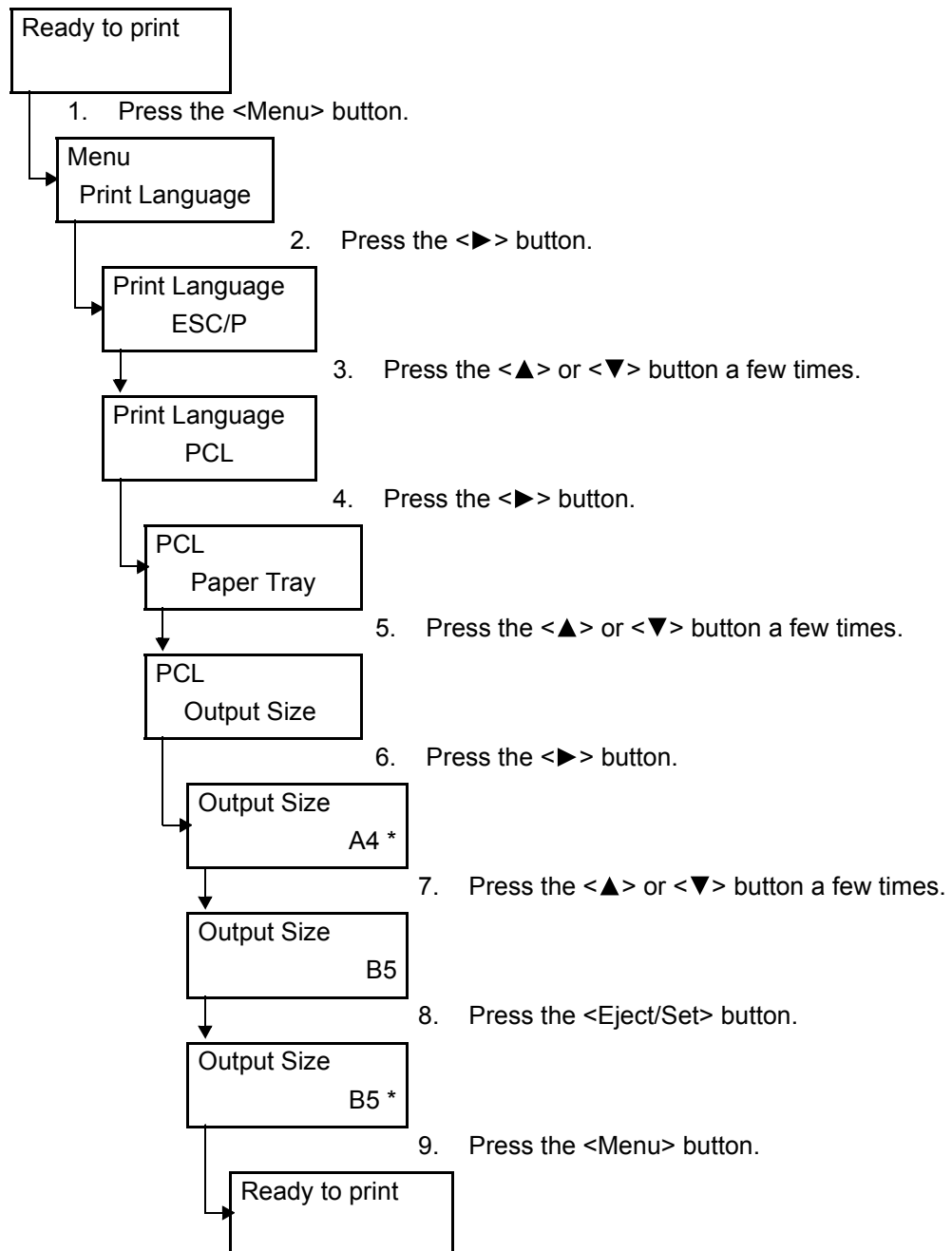
Line Termination

Sets the line termination control codes. Set how you want the printer to interpret CR, LF and FF control codes. The optional values and their interpretations are as follows:

Optional Values	CR Interpretation	LF Interpretation	FF Interpretation
Off (default)	CR	LF	FF
Add-LF	CR + LF	LF	FF
Add-CR	CR	CR + LF	CR + FF
CR-XX	CR + LF	CR + LF	CR + FF

Setting the PCL Mode Menu

The following example shows how to set the paper size of the PCL emulation mode to [B5].



2.3 PCL Mode Reports/Lists

This section explains the reports/lists that relate to the PCL emulation mode.

Note

- For information about other reports/lists that can be printed from the printer, refer to the 'User Guide'.

Printer Settings

Lists the settings configured on the control panel, including the PCL settings.

To print this report/list, select [Report/List] > [Printer Settings] on the control panel.

PCL Font List

Lists the fonts that can be used in the PCL emulation mode and their print samples.

To print this report/list, select [Report/List] > [PCL Font List] on the control panel.

PCL Macro List

Lists the PCL macros downloaded on the printer's hard disk (optional). It shows the macro name, macro ID, and the number of bytes of each macro.

To print this report/list, select [Report/List] > [PCL Macro List] on the control panel.

Index

E

emulation mode 7

F

force-eject function 11

H

host interface 7

M

mode menu 12, 16

O

outline font 9

P

PCL Font List 17

PCL Macro List 17

Printer Settings (list) 17

Mode Menu (PCL)

Ready to print

<Menu> button

Print Language

- ESC/P
- PDF
- PCL**
- PostScript

Paper Tray

- Auto
- Tray 1
- Tray 2
- Tray 3
- Tray 4
- Bypass Tray

Output Size

- A4
- A3
- A5
- B4
- B5
- 8.5x11
- 8.5x13
- 8.5x14
- 11x17
- 7.25 x 10.5
- Env 4.1 x 9.5
- Env 3.9 x 7.5
- Env 110 x 220mm
- Env 162 x 229mm
- 100 x 148mm
- Custom

- <Eject/Set>
- Portrait (Y)
 - Landscape (X)

0mm

0mm

Orientation

- Portrait
- Landscape

2 Sided

- Off
- On

- <Eject/Set>
- Flip Long Edge
 - Flip Short Edge

Font

- Courier
- ...
- GaramondKrsvH1b

Symbol set

- ROMAN-8
- ...
- DNGBTSMS

Font Size

12.00

4.00 - 50.00 Unit: 0.25

Font Pitch

10.00

6.00 - 24.00 Unit: 0.01

Form Line

64

5-128 Unit: 1

Quantity

1 Set(s)

1-999 sets Unit: 1 set

Image Enhance

- On
- Off

HexDump

- Enable
- Disable

Draft Mode

- Enable
- Disable

Output Color

- Color
- Black

Line Termination

- Off
- Add-LF
- Add-CR
- CR-XX

Optional
(May be standard depending on the printer model)

Default (bold frame)

DocuPrint C3055/C3055 DX PCL Emulation Setting Guide

Fuji Xerox Printing Systems Co., Ltd.

ME3679E2-1 (Edition 1)

November 2006

Copyright© 2006 Fuji Xerox Co., Ltd.