

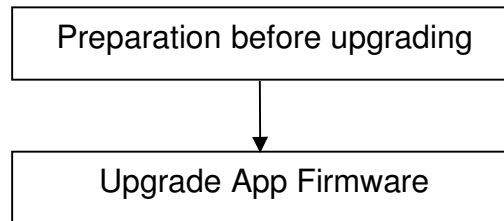
Upgrade Guidance for FI9821W V2

Note:

This firmware is for camera FI9821W V2.

Updating with the wrong firmware could severely damage and/or break your camera. Please make sure the firmware is correct.

Upgrading procedure:s

**Preparation before upgrading.**

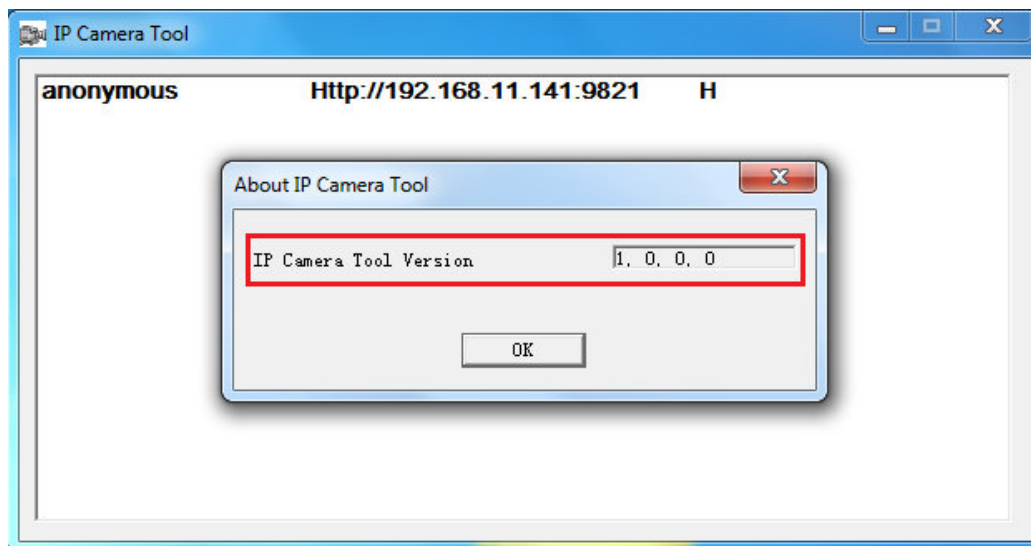
1. Connect camera to router with an Ethernet cable to upgrade firmware;
2. DO NOT upgrade firmware via wireless;
3. Keep power on during the upgrading;
4. Unplug the SD card, and reboot your camera first.

There are 2 methods to upgrade the firmware. You can either do the updating on IP Camera Tool (**Page 1**), or logging the camera as administrator, then upgrade the system firmware (**Page 4**).

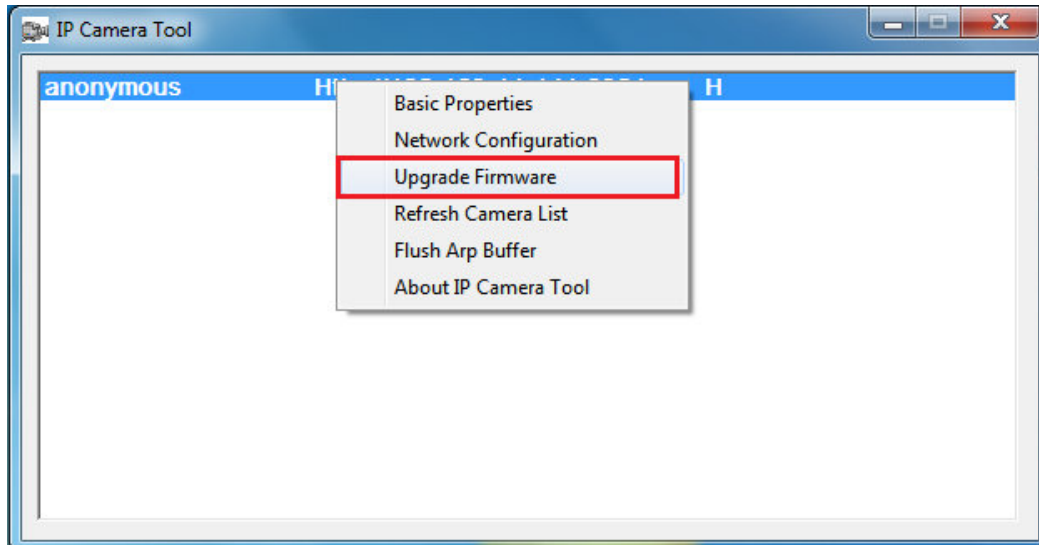
Method 1: Upgrade firmware on IP Camera Tool.

Note: Your IP Camera Tool version should be 1.0.0.0 (Windows user) or 0.0.0.1(Mac user)

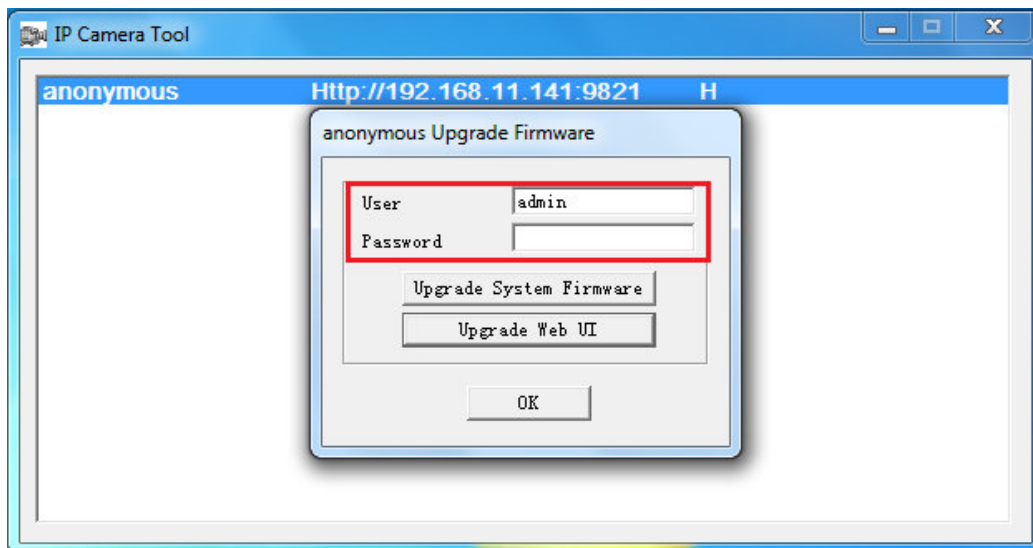
This IP Camera Tool can find in the CD coming with the camera.



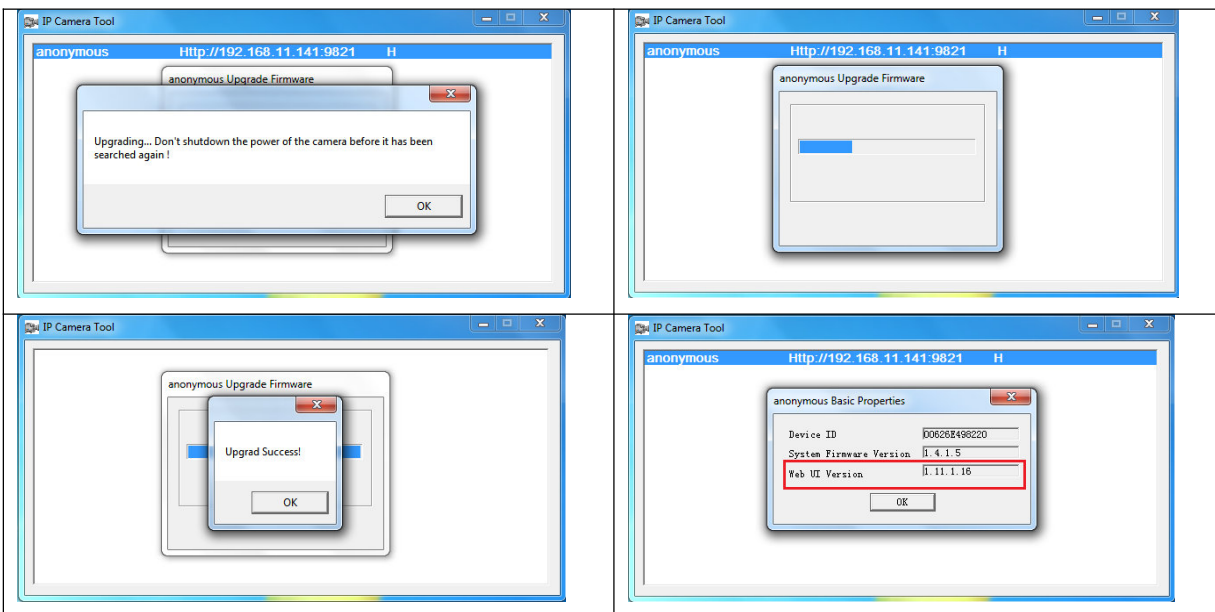
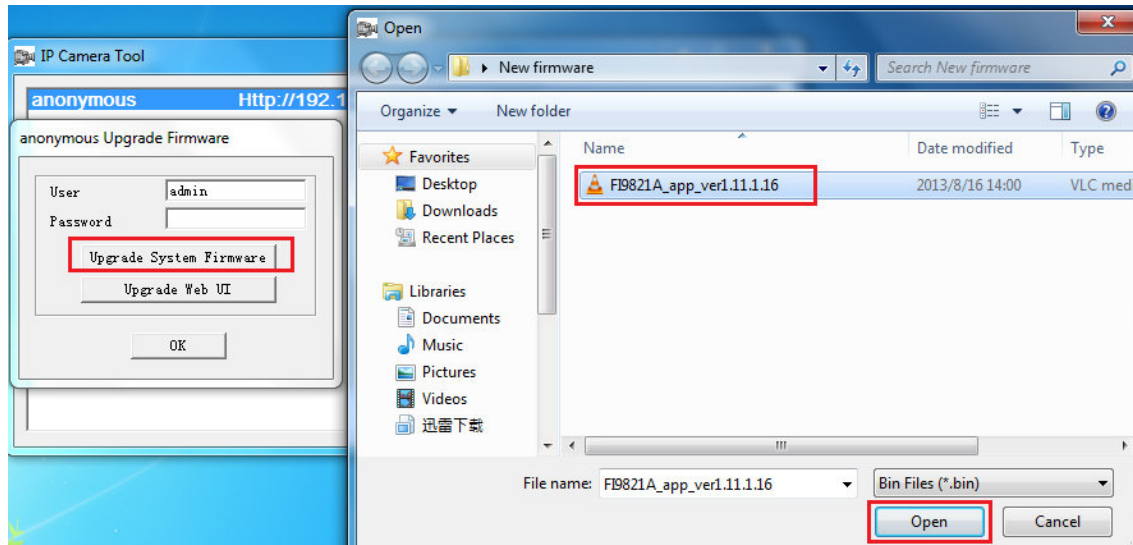
Step 1: Highlight and right click the camera and then go to **Upgrade Firmware**.



Step 2: Enter the user and password of camera. The default user is 'admin' and password is blank.



Step 3: Update System Firmware. Click Upgrade System Firmware → select App Firmware → click **Open**.



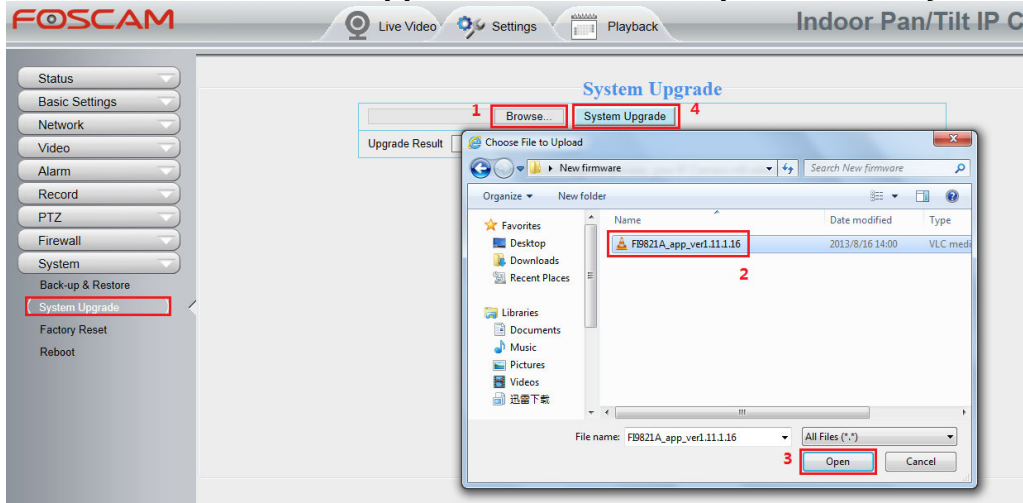
Step 4: Login your camera, go to **Settings-->Status-->Device Information** menu. Check the **System Firmware Version**, **Application Firmware Version** and **Plug-In Version**.

System Firmware Version	1.4.1.5
Application Firmware Version	1.11.1.16
Plug-In Version	2.0.1.4

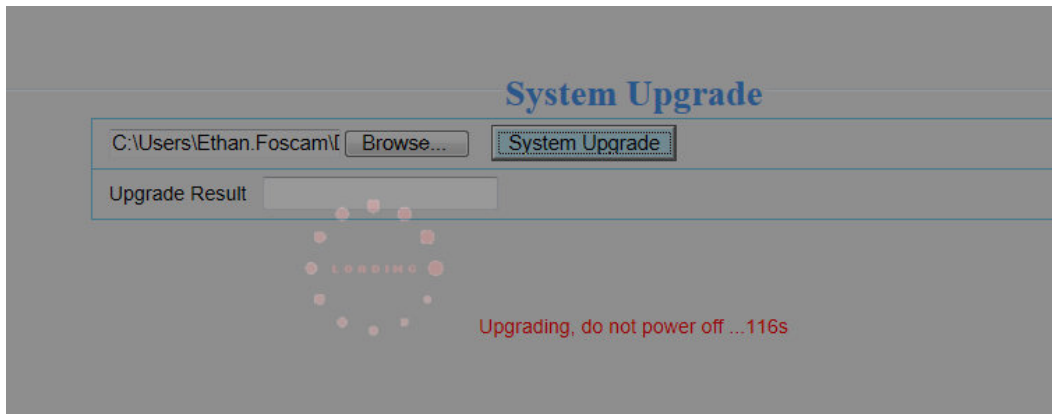
Method 2: Logging your camera as administrator first, upgrade firmware on web page.

Step 1: Click **Settings** → **System** → **System Upgrade**.

Click **Browse** → choose **App Firmware** → click **Open** → Click **System Upgrade**.



Step 3: “Upgrading, do not power off ... Xs” pop up. Please wait till the camera back to login page.



Username

Password

Stream

Language

Step 4: Check the **System Firmware Version, Application Firmware Version** and **Plug-In Version**.

Device Information	
<input type="button" value="Refresh"/>	
Camera Model	FI9821W V2
Camera Name	anonymous
Camera ID	00626E498220
Camera Time	2013/08/21 22:54:52
System Firmware Version	1.4.1.5
Application Firmware Version	1.11.1.16
Plug-In Version	2.0.1.4

Congratulations, your camera successfully upgraded to the latest firmware!

Note:

1. Remove the old plug-in if it has not upgraded, camera will prompt you to re-load the new one when login next time.
2. Please restore to factory settings after upgrade successfully, in order to change some default factory settings.
3. The correct firmware version after upgrade:

System Firmware Version	1.4.1.5
Application Firmware Version	1.11.1.16
Plug-In Version	2.0.1.4