



Mounting Accessory Guide

Apr. 12 2010



Table of Contents

1 Overview 5

Introduction.....	5
Types of Mounting Methods	5
Surface.....	5
Wall	5
L-Type Wall Mount (PMAX-0308)	6
Heavy Duty Wall Mounts (PMAX-0305 / 0309*)	6
Gooseneck Mounts (PMAX-0302 / 0303 / 0306 / 0307)	6
Junction Box (PMAX-0700)	6
Pole/Corner.....	7
Pole Mount Kit (PMAX-0502)	7
Corner Mount Kit (PMAX-0402)	7
Ceiling.....	7
Straight tubes / Pendant Mounts (PMAX-0102 / 0103 / 0108 / 0109)	7
Flush Mount Kits (PMAX 1001 / 1002 / 1003 / 1006)	8
Others	8
Mount Kit (PMAX-0101)	8
Adaptor Ring for CAM series Speed Dome (not sold separately)	8
Indoor Mount Kit (PMAX-0107)	8
Brackets	9
Gang Box Converter Plate (PMAX-0801)	9
Extension Tube (PMAX-0104)	9

2 How to select your Accessories 10

Configuration Tree	10
Configuration Table.....	12
Outdoor Rugged Dome	12
Speed Dome	12
Indoor Dome	13
PTZ Camera	13
Migration Table	14

3 Installation Instructions 15

Connecting Cameras to Mount Kits	15
Connecting Indoor Domes to Mount Plates.....	16
Connecting Outdoor Rugged Domes to Mount Plates	18
Connecting PTZ Cameras to Mount Plates.....	22
Connecting Mount Kits to Mounting Accessories	26
Connecting Mounting Accessories to Structures	27
L type wall mount	27
Heavy Duty Wall Mount.....	28
Pole Mount Kit.....	29
Corner Mount Kit.....	31
Flush Mount Kit (In-Ceiling).....	32
Indoor Dome (PMAx-1006).....	33
Outdoor Rugged Dome (PMAx-1003).....	36
PTZ Cameras (PMAx-1001/1002).....	39
T-Bar Ceiling Mount (PMAx-1007)	41
Junction Box.....	45
Used horizontally on the wall.....	46
Used horizontally with Pole / Corner Mount kits.....	47
Used Vertically with Straight Tube (Pendant Mounts).....	48
Installing Speed Domes	50

4 Sample Installations: 56

Outdoor Rugged Dome	56
Wall	56
Corner.....	59
Pole.....	61
Ceiling.....	63
Speed Dome	65
Wall	65
Corner.....	67
Pole.....	69
Ceiling.....	71
Indoor Dome	73
Wall	73
Corner.....	76

Mounting Accessory Guide

Pole	78
Ceiling	80
PTZ Cameras	82
Wall	82
Corner	85
Pole	87
Ceiling	89

Overview

Introduction

Comprehensive surveillance system design requires camera placements in all kinds of locations. Cameras are secured to attachment surfaces via a wide variety of mounting accessories. These are generally divided into outdoor (weatherproof) and indoor (non-weatherproof) constructions.

ACTi is introducing a new range of Mounting Accessories in Apr. 2010 to augment and replace existing mounting accessories, especially for the Dome / PTZ Camera series. The new series of are entirely constructed in high strength aluminum alloys and stainless steel.

They are now drastically lighter in weight, surprisingly robust in construction and comfortably impervious to the weather. In many cases the new version weighs less than half of its predecessor. Due to the higher costs required to provide such quality, the prices for this new series of mounting accessories will be increased accordingly.

Accessories for the CAM-series speed domes will be discontinued after Apr.30 2010.

In this document we detail the many choices available through ACTi's range of mounting accessories.

Types of Mounting Methods

Surface

Surface mounts are the default mounting methods for many dome / PTZ cameras. Installer would secure the device onto the target surface with screws.

Wall

Accessories that attach to the wall can be divided into the following types:

Mounting Accessory Guide

L-Type Wall Mount (PMAx-0308)

This is the most commonly used accessory to attach cameras to the wall. The mount comes with a removable multi-function connector plate that links to ACTi Dome cameras and PTZ cameras. 2" mini domes and speed domes cannot connect to this mount. There are two pre-cut tabs that can be removed with pliers when required by cabling needs.



Heavy Duty Wall Mounts (PMAx-0305 / 0309*)

For Dome / PTZ: PMAx-0305

For Speed Dome: PMAx-0309*

This cast-aluminum mount is surprisingly strong yet light. It can be attached to the wall directly, to a junction box or to Pole / Corner mounts. The connector tube in front connects to cameras via mount kits. This mount comes with a sealable conduit hole for waterproof half-inch cable glands. There also an attachment point to attach steel safety wire to camera.



Gooseneck Mounts (PMAx-0302 / 0303 / 0306 / 0307)

For Dome / PTZ: PMAx-0303(without Bracket) or PMAx-0302(with Bracket)

For Speed Dome: PMAx-0306(without Bracket) or PMAx-0307(with Bracket)

Gooseneck Mount is named for its characteristic arc shape. It functions similar to the Heavy Duty Wall Mount by providing a location to suspend cameras. Gooseneck mount comes with a safety-wire attachment point, but requires a junction box to connect to conduits.



Junction Box (PMAx-0700)

This full-aluminum IP-66 junction box is a waterproof container where installers can protect wiring connections. Adaptors or other devices can also be stored within this spacious box, while multiple conduit connectors allow for wiring in different angles. Conduit holes are paired on each exit surface, so that when power line and data cable are required by local regulation to take separate paths, they can be managed easily within this junction box.



Removable face plate / wall attachment plate means that the box can be rotated to link with either the wall or the ceiling, allowing for more flexible use and simplified stock management.

Pole/Corner

Mounting kits for these two types of locations essentially create a piece of wall-like surface for accessories to attach to. Thus they are often used in conjunction with wall-based connections.

Pole Mount Kit (PMAx-0502)

This mounting kit secures itself by hugging to poles with two adjustable tension steel bands. The bands are adjustable with normal flat screwdrivers without needing specialized tools. It creates a platform to which other wall-based mounting accessories may attach to. Brackets for box / bullet type cameras (PMAx-1101 / 1103) can also attach to the pole mount kit plate.



Corner Mount Kit (PMAx-0402)

This kit attaches to both sides of a 90-degree wall corner by multiple screws and create a vertical surface for devices to attach to. Like the Pole Mount Kit, both wall mount based accessories and brackets (PMAx 1101 / 1103) can attach to the Corner Mount Kit.



Ceiling

To attach devices to the ceiling, there are generally two types of mounts, Straight Tube (Pendant Mount) and Flush Mount.

Straight tubes / Pendant Mounts (PMAx-0102 / 0103 / 0108 / 0109)

For Dome / PTZ: PMAx-0102(without Bracket) or PMAx-0103(with Bracket)

For Speed Dome: PMAx-0108(without Bracket) or PMAx-0109(with Bracket)

Straight Tubes are secured to the ceiling either directly or via brackets. They are sometimes called Pendant Mounts. They may be extended by extension tubes to hang from very high overhanging ceilings. If wiring space is required, a junction box can be inserted between the straight tube and the ceiling.



Mounting Accessory Guide

Flush Mount Kits (PMAx 1001 / 1002 / 1003 / 1006)

Flush mounts are also called in-ceiling or ceiling mounts. They are used to hide the body of domes and PTZ devices into the ceiling, to reduce the profile and expose only the dome cover. For each type of camera there is a corresponding specialized Flush Mount. Please see details for explanation.



Others

These accessories are an important part of the configurations, but are generally not identified as a mounting type.

Mount Kit (PMAx-0101)

This mount kit is the universal link that gives the ACTi mounting accessory system its flexibility. The ring adaptor above connects to both gooseneck mount and Heavy Duty Wall mount, while the adaptor plate below connects to all 3 inch domes, 4 inch domes and PTZ cameras.



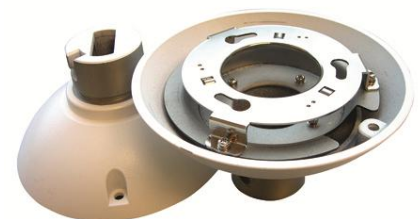
Adaptor Ring for CAM series Speed Dome (not sold separately)

Our CAM-6xxx series speed domes used a different set of mounting accessories prior to 2010 Q1. The adaptor ring makes the existing models compatible with our new mounting accessory systems introduced in Apr. 2010. Just fix this to the top of an existing speed dome mounting kit, and it will be able to connect to the tubes in ACTi mounting accessories. This ring is not sold separately. Please purchase the versions of tube base mounts that come with the adaptor ring. (PMAx- 0108 / 0109 / 0306 / 0307 / 0309)



Indoor Mount Kit (PMAx-0107)

This is the mount kit for CAM-6510 indoor speed domes. Use this in conjunction with mounts that came with adaptor rings. (See above). Mount kits of CAM outdoor speed domes are included in the camera package and not sold separately.



Mounting Accessory Guide

Brackets

Box/ Bullet Cameras are often mounted via brackets that extend from support structures. Brackets PMAX-1101 /1103 may be attached to Corner Mount Kit (PMAX-0402) and Pole Mount Kit (PMAX0502).



Gang Box Converter Plate (PMAX-0801)

Two gang boxes and 4" square boxes are common wiring connections. They may be used both on the wall and the ceiling. This adaptor plate allows Heavy Duty Wall mount, Gooseneck mount and pendant mounts to connect to them. One side is screwed to the box while the mounting accessories are screwed in on the other side. (Gang Box in images not included)



Extension Tube (PMAX-0104)


This tube is used when the camera needs to be suspended much lower than the mount itself, for instance when halfway-down from the ceiling. This tube can be used with gooseneck mount / Heavy Duty Wall mount and straight tube pendant mount.



How to select your Accessories

Where and how to attach your camera is complex stuff, and we know it. To make your life easier, we have organized a few tables and charts in this section.

The Configuration Tree is the grand overview to make sense of everything. It shows all the connection possibilities, so that you have a good conceptual grasp of which accessory goes where.

The Configuration Table provides a list of all possible combinations. Each horizontal row is one possible connection scenario. Most rows have a direct link to the sample installation photo. You may click the Return button  at any time to go back to the configuration table. Except configurations using Gang Box Converters and surface mounts, there is a sample photo for every configuration. As extension tubes can be connected to many possibilities, we show only one example for each camera type by using the straight tube pendant mount.

The Migration Table details the relationship between past and present ACTi Mounting Accessories. It will show you the newer incarnations of the previous versions, especially the CAM-series Speed Dome related mounting accessories.

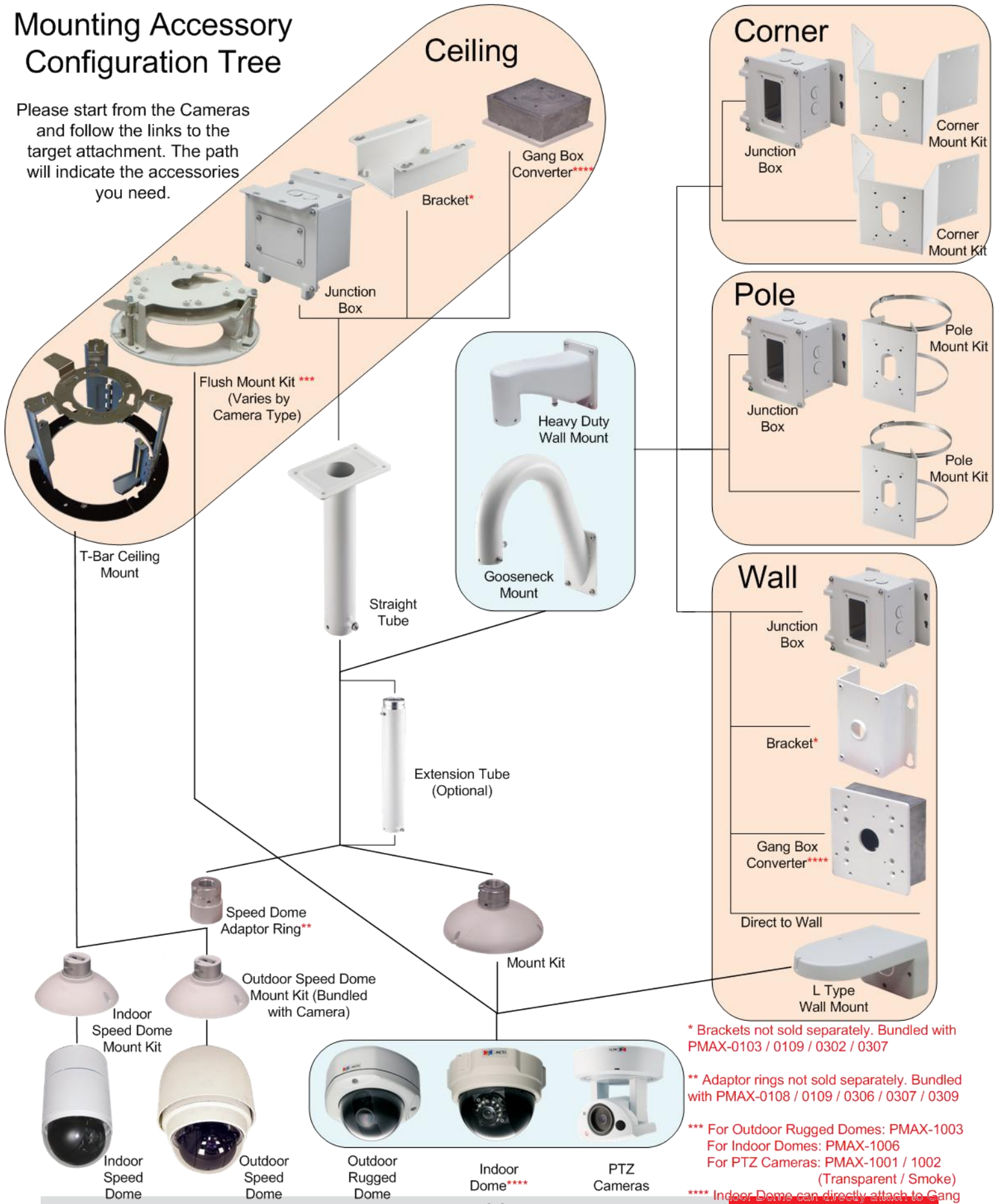
Configuration Tree

The diagram on the next page maps out the connection relationships between each type of mounting accessories. Parts that may connect directly with each other are linked by lines. Branches indicate multiple possibilities.

When choosing the parts required, just start from the camera, and follow the lines to the intended attachment location. For instance, if you have an Outdoor Rugged Dome that needs to be mounted on a wall, you can start from the colored section in the bottom. You may follow the link directly to the right and use an L-type wall mount, or go through the mount kit / Heavy Duty Wall Mount / Junction Box and arrive at the wall.

Mounting Accessory Configuration Tree

Please start from the Cameras and follow the links to the target attachment. The path will indicate the accessories you need.



* Brackets not sold separately. Bundled with PMAx-0103 / 0109 / 0302 / 0307

** Adaptor rings not sold separately. Bundled with PMAx-0108 / 0109 / 0306 / 0307 / 0309

*** For Outdoor Rugged Domes: PMAx-1003
 For Indoor Domes: PMAx-1006
 For PTZ Cameras: PMAx-1001 / 1002 (Transparent / Smoke)

**** Indoor Dome can directly attach to Gang Box Converter with bundled attachment plate

Configuration Table

Here we have listed all the possible configurations for the dome / PTZ cameras. Each horizontal line is one possible configuration. The part numbers are listed in light blue. We have provided sample images of many actual assemblies in the [Sample Installations](#) section.

Outdoor Rugged Dome

Surface	Mount Type	Bracket / Junction Box / Gang Box Converter	Mount Kit	Extension Tube	
Wall	L-Type PMA-0308	--	Mount Kit PMA-0101	Extension Tube (Optional) PMA-0104	
	Heavy Duty PMA-0305	--			
		Junction Box PMA-0700			
		Gang Box Converter PMA-0801			
	Gooseneck w/Bracket PMA-0302				
	Gooseneck PMA-0303	Junction Box PMA-0700			
Gang Box Converter PMA-0801					
Corner PMA-0402	Heavy Duty PMA-0305	--			
	Junction Box PMA-0700				
Gooseneck PMA-0303	--				
	Junction Box PMA-0700				
Pole PMA-0502	Heavy Duty PMA-0305	--			
	Junction Box PMA-0700				
Gooseneck PMA-0303	--				
	Junction Box PMA-0700				
Ceiling	Straight Tube w/Bracket PMA-0103				
	Straight Tube PMA-0102	Junction Box PMA-0700			
		Gang Box Converter PMA-0801			
	Flush PMA-1003	--			
Surface (default)	--				

Speed Dome

Surface	Mount Type	Bracket / Junction Box / Gang Box Converter	Mount Kit	Extension Tube	
Wall	Heavy Duty PMA-0309	--	Outdoor Speed Dome Mount Kit Bundled Indoor Speed Dome Indoor Mount Kit PMA-0107	Extension Tube (Optional) PMA-0104	
		Junction Box PMA-0700			
		Gang Box Converter PMA-0801			
	Gooseneck w/Bracket PMA-0307				
	Gooseneck PMA-0306	Junction Box PMA-0700			
		Gang Box Converter PMA-0801			
Corner PMA-0402	Heavy Duty PMA-0309	--			
	Junction Box PMA-0700				
Gooseneck PMA-0306	--				
	Junction Box PMA-0700				
Pole PMA-0502	Heavy Duty PMA-0309	--			
	Junction Box PMA-0700				
Gooseneck PMA-0306	--				
	Junction Box PMA-0700				
Ceiling	Straight Tube w/Bracket PMA-0109				
	Straight Tube PMA-0108	Junction Box PMA-0700			
		Gang Box Converter PMA-0801			
T-bar Ceiling Mount PMA-1007	--				

Mounting Accessory Guide

Indoor Dome

Surface	Mount Type	Bracket / Junction Box / Gang Box Converter	Mount Kit	Extension Tube	
Wall	L-Type PMAx-0308		--		
		Gang Box Converter PMAx-0801	--		
	Heavy Duty PMAx-0305	--	Junction Box PMAx-0700	Mount Kit PMAx-0101	Extension Tube (Optional) PMAx-0104
			Gang Box Converter PMAx-0801		
			Gooseneck w/Bracket PMAx-0302		
	Gooseneck PMAx-0303	Junction Box PMAx-0700			
Gang Box Converter PMAx-0801					
Corner PMAx-0402	Heavy Duty PMAx-0305	--			
	Gooseneck PMAx-0303	Junction Box PMAx-0700			
Pole PMAx-0502	Heavy Duty PMAx-0305	--			
	Gooseneck PMAx-0303	Junction Box PMAx-0700			
Ceiling		Straight Tube w/Bracket PMAx-0103			
	Straight Tube PMAx-0102	Junction Box PMAx-0700			
		Gang Box Converter PMAx-0801			
		Gang Box Converter PMAx-0801	--		
	Flush PMAx-1006		--		
	Surface (default)		--		

PTZ Camera

Surface	Mount Type	Bracket / Junction Box / Gang Box Converter	Mount Kit	Extension Tube
Wall	L-Type PMAx-0308		--	
	Heavy Duty PMAx-0305	--	Mount Kit PMAx-0101	Extension Tube (Optional) PMAx-0104
		Junction Box PMAx-0700		
		Gang Box Converter PMAx-0801		
		Gooseneck w/Bracket PMAx-0302		
	Gooseneck PMAx-0303	Junction Box PMAx-0700		
Gang Box Converter PMAx-0801				
Corner PMAx-0402	Heavy Duty PMAx-0305	--		
	Gooseneck PMAx-0303	Junction Box PMAx-0700		
Pole PMAx-0502	Heavy Duty PMAx-0305	--		
	Gooseneck PMAx-0303	Junction Box PMAx-0700		
Ceiling		Straight Tube w/Bracket PMAx-0103		
	Straight Tube PMAx-0102	Junction Box PMAx-0700		
		Gang Box Converter PMAx-0801		
	Flush PMAx-1001/1002		--	
	Surface (default)		--	

Migration Table

The table below shows the suggested replacement model for previous accessories starting from Apr. 1, 2010. Most of the new models are of higher quality and performance. We hope you enjoy our new offerings. The previous accessories will be discontinued by Apr. 30, 2010.

Previous Accessory	Replace with	Old Item Number	Description
	Since 4/1/2010	Prior to 09/30/2009	
PMAX-0105-000R0	PMAX-0109	D77H03-WST1-R0	Speed Dome Mounting/ Straight Tube
PMAX-0106-000R0	PMAX-0109 + PMAX-0104	D77H03-WST2-R0	Speed Dome Mounting/ Straight Tube
PMAX-0107-000R0	No change	D77H05-WIMK-R0	Speed Dome Mounting/ Indoor Mount Kit
PMAX-0300-000R0	PMAX-0308	MTB-201-R0	Fixed Dome Mount Kit / Indoor Wall Mount Kit
PMAX-0301-000R0	PMAX-0308	R695-00019-001	Fixed Dome Mount Kit / Outdoor Wall Mount Kit
PMAX-0304-000R0	PMAX-0306 or 0307	D77H03-WGT-R0	Speed Dome Mounting/ Gooseneck Tube
PMAX-0400-000R0	PMAX-0402	D77H05-WCST-R0	Speed Dome Mounting/ Corner Plate Mounting
PMAX-0401-000R0	PMAX-0402 + PMAX-0700	D77H05-WCTB-R0	Speed Dome Mounting/ Corner Thin Box Mounting
PMAX-0500-000R0	PMAX-0502 + PMAX-0700	D77H05-WPTB-R0	Speed Dome Mounting/ Pole Thin Box Mounting
PMAX-0501-000R0	PMAX-0502	D77H05-WPTD-R1	Speed Dome Mounting/ Pole Thin Direct Mounting
PMAX-0701-000R1	PMAX-0700	D77H05-WWBM-R0	Speed Dome Mounting/ Wall Box Mounting
PMAX-1001-000R0	No change	R695-00022-100	PTZ Camera Mount Kit / Flush Mount Kit
PMAX-1003-000R0	No change	R695-00020-000	Fixed Dome Mount Kit / Outdoor Flush Mount Kit
PMAX-1007-000R0	No change	D77H06-TB-R0	Speed Dome Mounting/ T-Bar Ceiling Mount
PPBX-0000-000R0	PMAX-0700	D77H07-EPB13-R0	Speed Dome Mounting/ Power Box (IP66)
PPBX-0001-000R0	PMAX-0700	D77H07-EPB23-R0	Speed Dome Mounting/ Power Box (IP66)

Installation Instructions

As you can see on the configuration tree, there are several basic types of connections that are reused across different mounts. Here we will show detail steps for each connection, but not repeat them unnecessarily.

Connecting Cameras to Mount Kits

PTZ, indoor domes and outdoor rugged domes can all connect to the mount kit via the mount plate. The L-type Mount uses a similar U-shaped mount plate is extended on one side. The cameras are attached in the same way to both types of mount plates.

The mount plate has multiple connection holes, which are shown in the image below.

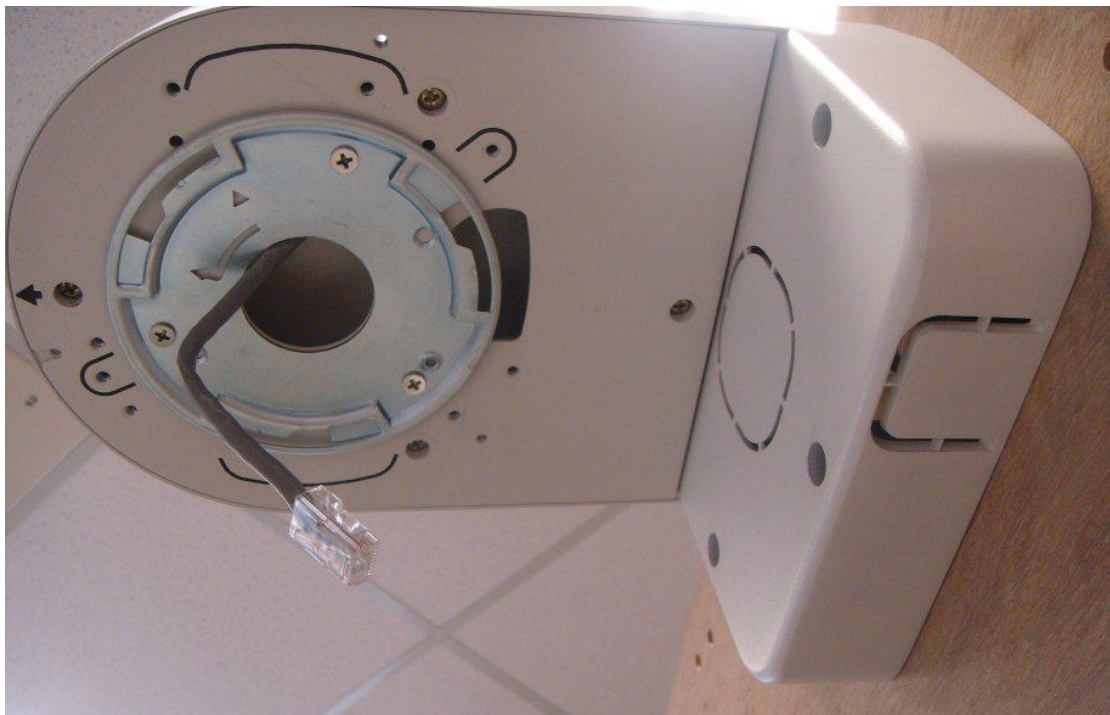


Connecting Indoor Domes to Mount Plates

Step 1: The indoor dome camera comes with its own connection plate and screws.



Step 2: Screw the connection plate onto the mount plate. Thread the network cable out from the center hole.



Mounting Accessory Guide

Step 3: Connect the camera to the network cable. Latch the three hooks onto the connection plate



Step 4: Rotate clockwise until the camera clicks into position. The camera is secured now.



Mounting Accessory Guide

The connection points to screw on the connector plate are marked below by the red circles.



Indoor Dome

Connecting Outdoor Rugged Domes to Mount Plates

Step 1: Insert the three screws through the three holes from the inside of the dome camera. The screws will be held in place by the rubber sheet at the back.



Mounting Accessory Guide

Here we show the backside of the rugged dome with the screw temporarily held in place by the rubber sheet. The waterproof plug may be placed either at the side or the bottom, as the wires may go through either opening.



Step 2: Thread the cable through the side hole in the mount plate. For wall mounted Rugged Domes, you may choose to cut open the metal tab in the vertical face of L-type wall mount, and connect the wires through the side of Rugged dome instead.



Mounting Accessory Guide

Step 3: secure the screws onto the mount plate with screwdriver. The ACTi sticker will face the front and align with the arrow. The corresponding holes are marked below in both types of Mount plates. The dome cover is suspended by safety spring during the operation.



Outdoor Rugged Dome



Mounting Accessory Guide

Step 4: Bend the network cable and connect it to the camera network port.

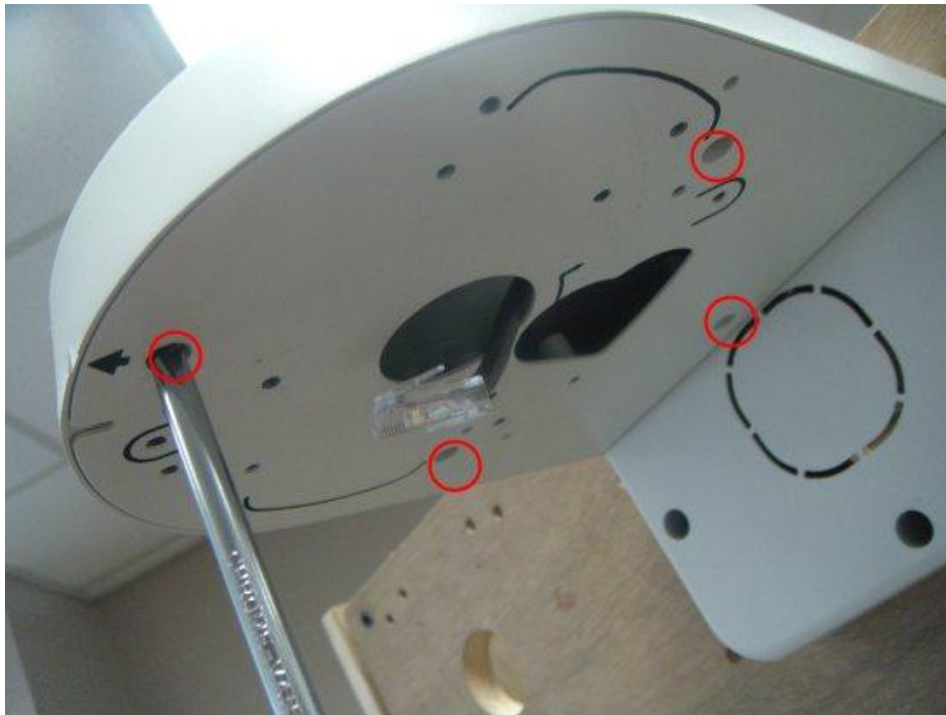


Step 5: Secure the dome cover to the camera body.

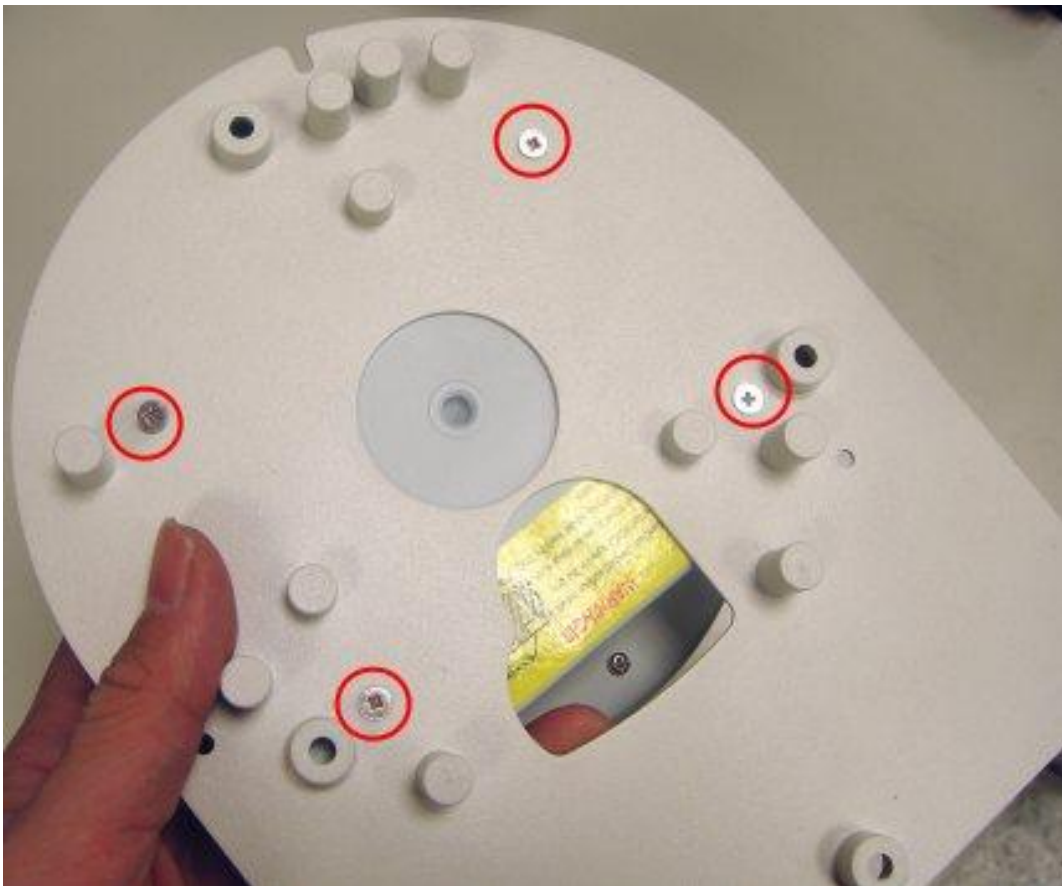


Connecting PTZ Cameras to Mount Plates

Step 1: Remove the Mount plate from the Mount Kit / L type mount.



Step 2: screw the camera to the mount plate from above the mount plate.



Mounting Accessory Guide

Step 3: Connect the cable to the camera through the hole.



Step 4: Attach the Mount plate to the mount kit / L type wall mount by screwing in 3 new locations. For L type wall mount, one of the four original connections can be reused.



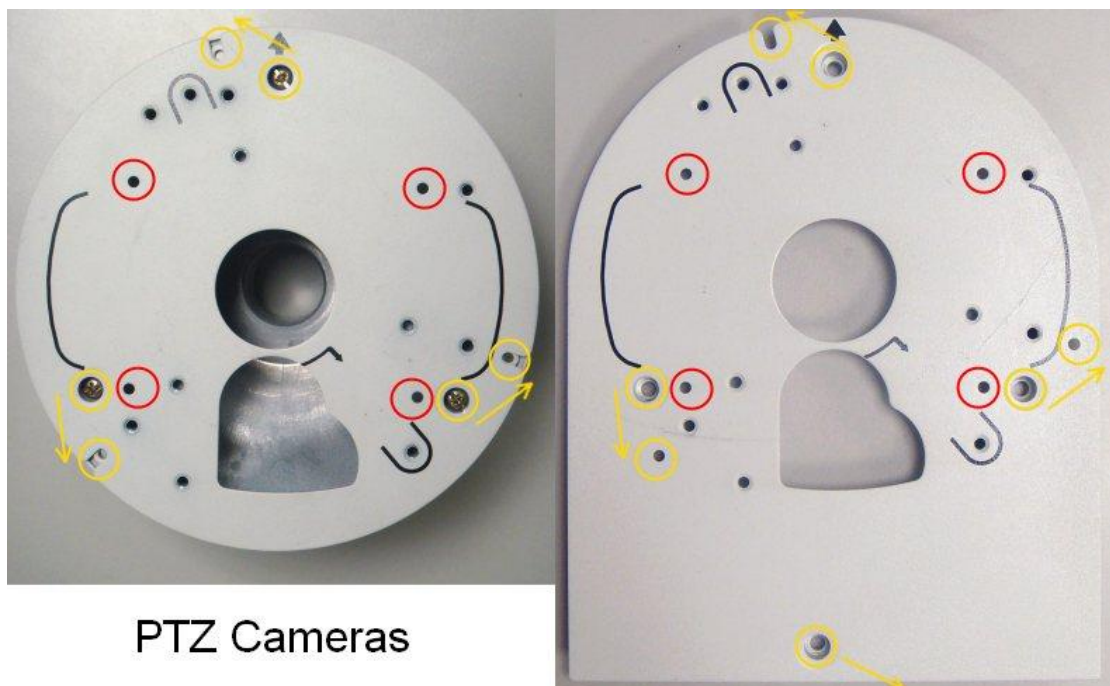


Mounting Accessory Guide

The photo here shows the camera and the two types of screws used. The ones on the left are the original ones used to link the mount plate with the mount kit / L type wall mount. The three screws to the right are the ones used to secure the mount plate to the mount kit by using the alternative linking positions.



The second image shows the connections to the mount plate. PTZ camera is secured to the mount plate via the four red circled holes, while the yellow circles mark the places where the mount plate attaches to the mount kit. The initial attachment points from the mount plate to the mount kit cannot be used, and must be changed to the new locations with the new screws.



Connecting Mount Kits to Mounting Accessories

Step 1: On the top of Mount kit, there is a L-shaped slot. In the inside of ACTi mounting accessory tubes, there is a corresponding hidden plug. You may slide the mount kit upward then rotate it clockwise until it arrives at its location. Secure it with two screws afterwards.



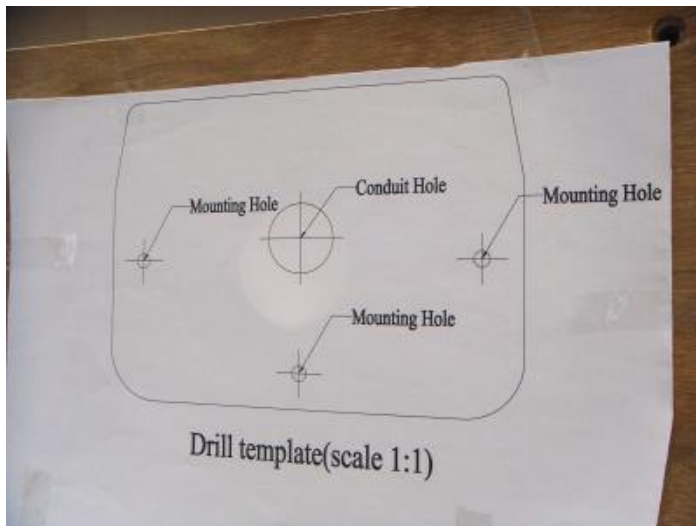
Connecting Mounting Accessories to Structures

Many connections to the wall / other surfaces require bolts or drilled holes to be secured to the wall. As the required fixtures are different based upon the type of surface, this part is not included in the mounting accessories.

For many models, the package includes a pre-printed drill template. They indicate the positions between required holes on the wall, and are helpful in installations.

L type wall mount

Step 1: Stick the drill template to the wall. Drill proper openings based upon the template.



Step 2: Thread the wire through the opening on the wall. The wire should be about 30 cm (one foot) long



Mounting Accessory Guide

Step 3: Secure the L-type wall mount to the wall with the three included screws.

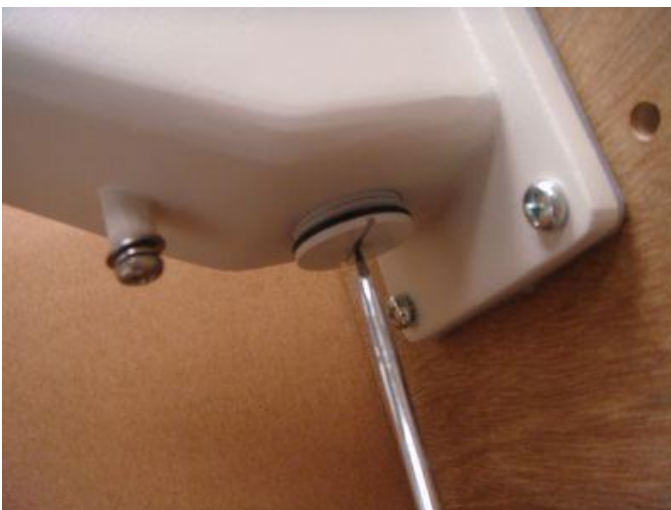


Heavy Duty Wall Mount

Step 1: Attach the Heavy Duty Wall mount to the wall via the four holes on the corners. Thread the wire through the Heavy Duty Wall mount.



Step 2: If you require a conduit connection, remove the conduit opening plug with a flat head screw driver, and attach the half-inch waterproof cable glade there.



Mounting Accessory Guide

Step 3: If your device has a connection point for safety wire, you can attach the safety wire to the attachment point provided, right besides the conduit opening.



Pole Mount Kit

The pole mount kit comes with two steel bands that can be tightened via flathead screw drivers.



Mounting Accessory Guide

Step 1: insert the bands through the openings at the back of Pole mount kit. There are three sets of openings to choose from. You would need to use only two of them. Loop the band around the pole, and insert the free end into the tightening screw.



Step 2: Tighten the bands with a flathead screwdriver. The overlapping bands may be inserted inside the slots in the back of Pole Mount Kit.



Step 3: Finished



Corner Mount Kit

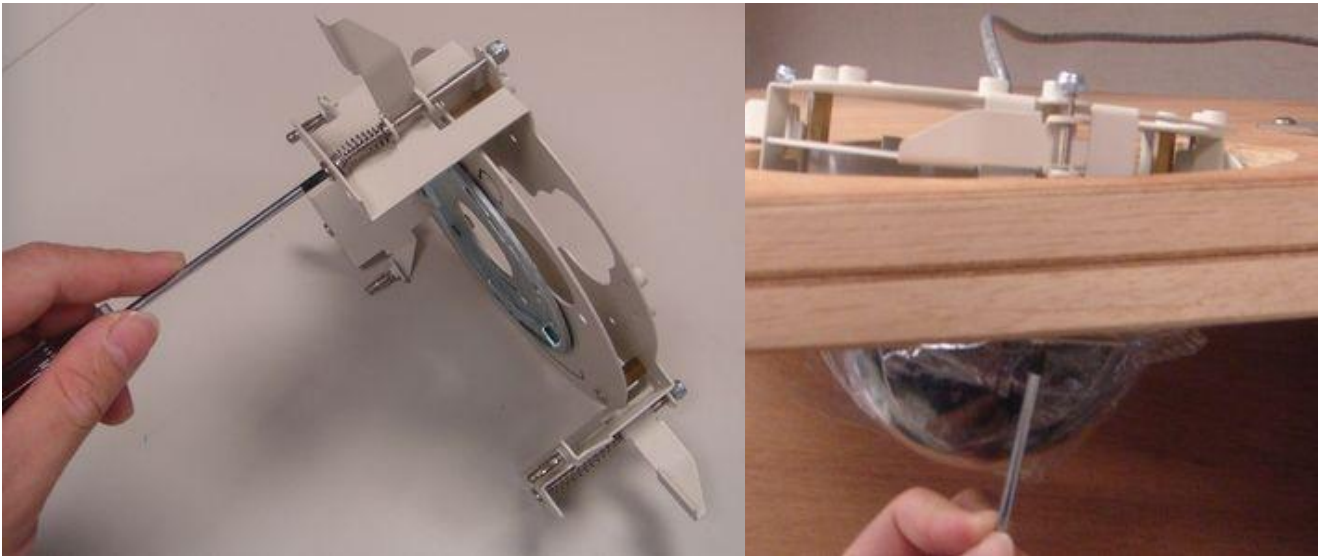
To attach corner mount kit to the structure, use the drill template to position the holes on the wall, then secure the corner mount to the corner (4 bolts each side).



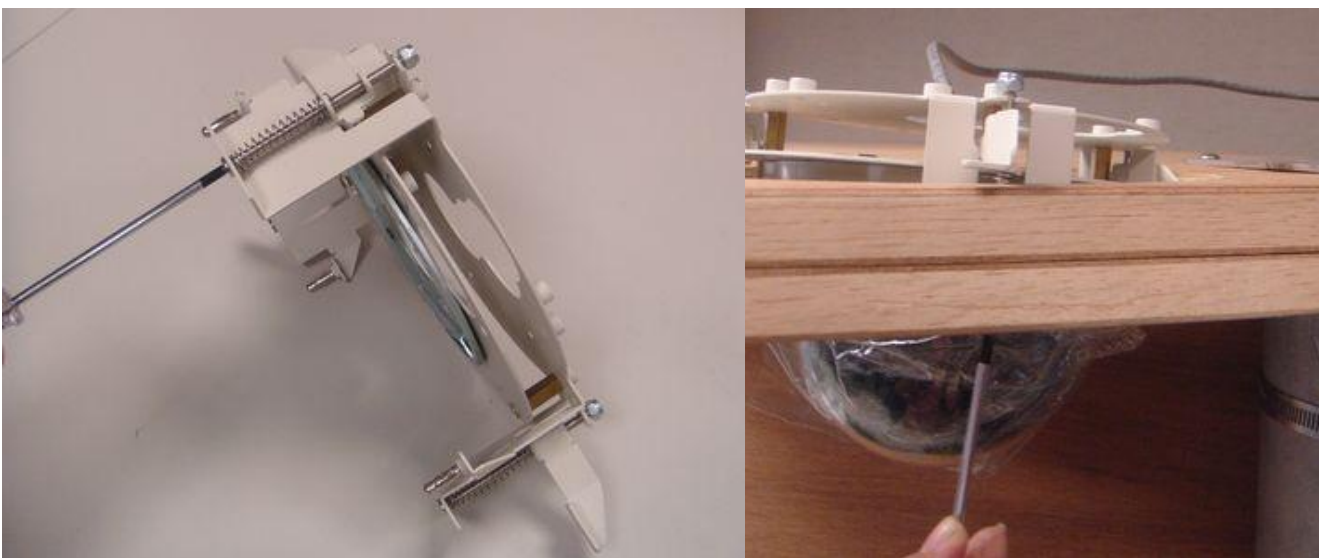
Flush Mount Kit (In-Ceiling)

Flush Mount Kit has a special mechanism that allows it to slip inside the pre-cut opening then expand the wing-like tabs to secure it from behind. The flush mount kits PMAX-1003 and PMAX-1006 are identical, except for an additional mezzanine plate for PMAX-1006 so that smaller indoor domes can be mounted. PMAX-1001 is the PTZ version that has a dome cover. The donut shaped front ring cover can be removed by simply pulling it away from the kit.

Step 1: Tabs retracted



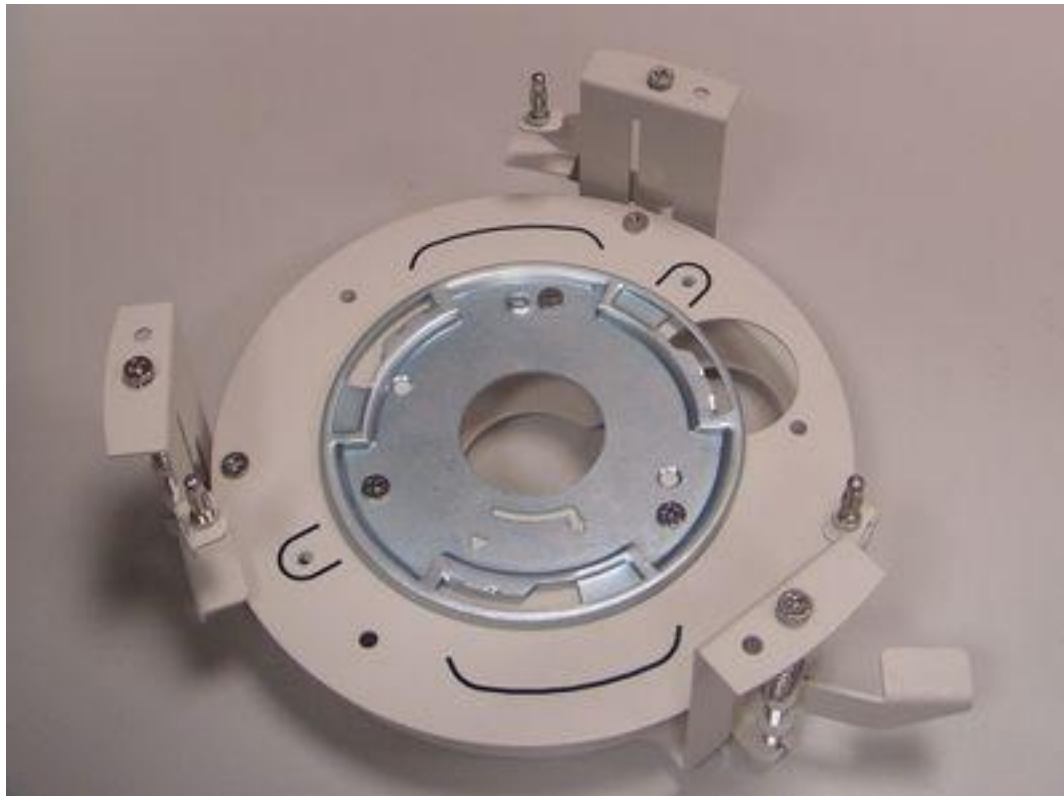
Step 2: Tab extended when a screwdriver turns the mechanism clockwise. Turning the screw further clockwise will lower the tab and reduce the distance between the wing tab and the undersurface tab. This will secure the flush mount on the ceiling. Note that the starting position of the tab should be right above the slot.



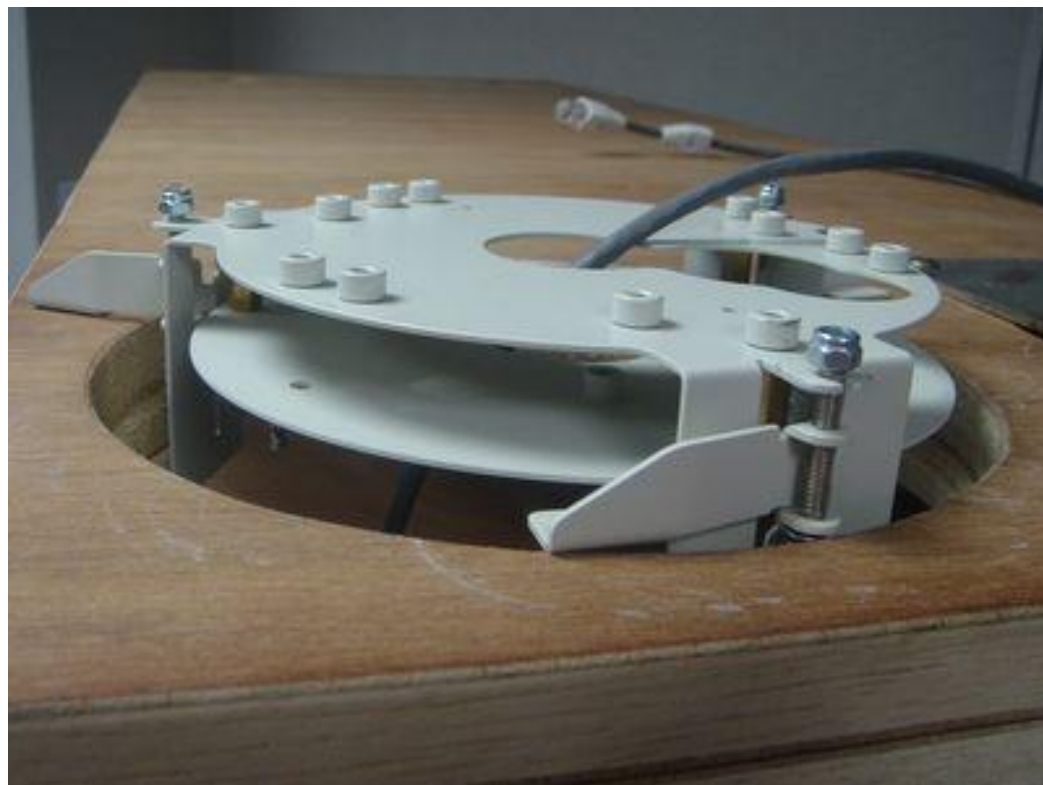
Mounting Accessory Guide

Indoor Dome (PMAx-1006)

Step 1: Attach the connection plate to the mount plate of the Flush Mount Kit



Step 2: Attach the Flush Mount Kit to the ceiling. Thread the cable through the center.



Mounting Accessory Guide

Step 3: Connect the cable to the indoor dome camera. Keep the wrapping plastic sheet on the dome cover to protect it from damage.



Step 4: Press the camera to the connection plate, with the three small tabs in the slots. Rotate until it clicked into position.



Mounting Accessory Guide

Step 5: Slip the front cover up onto the flush mount kit. Align the small hole on the back of front ring cover to the metal spring-rod. Push up to click into position.



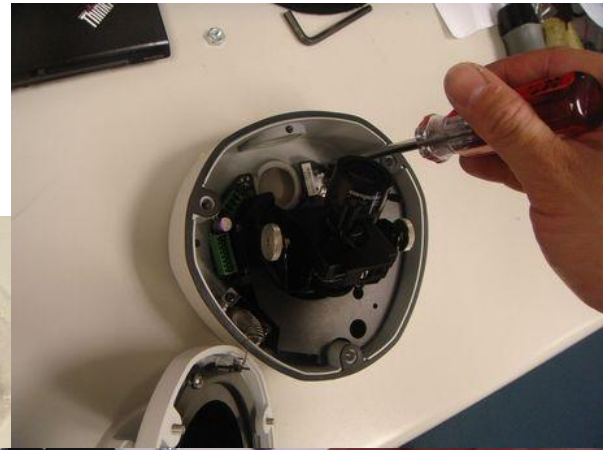
Step 6: Remove the plastic wrap. Finish



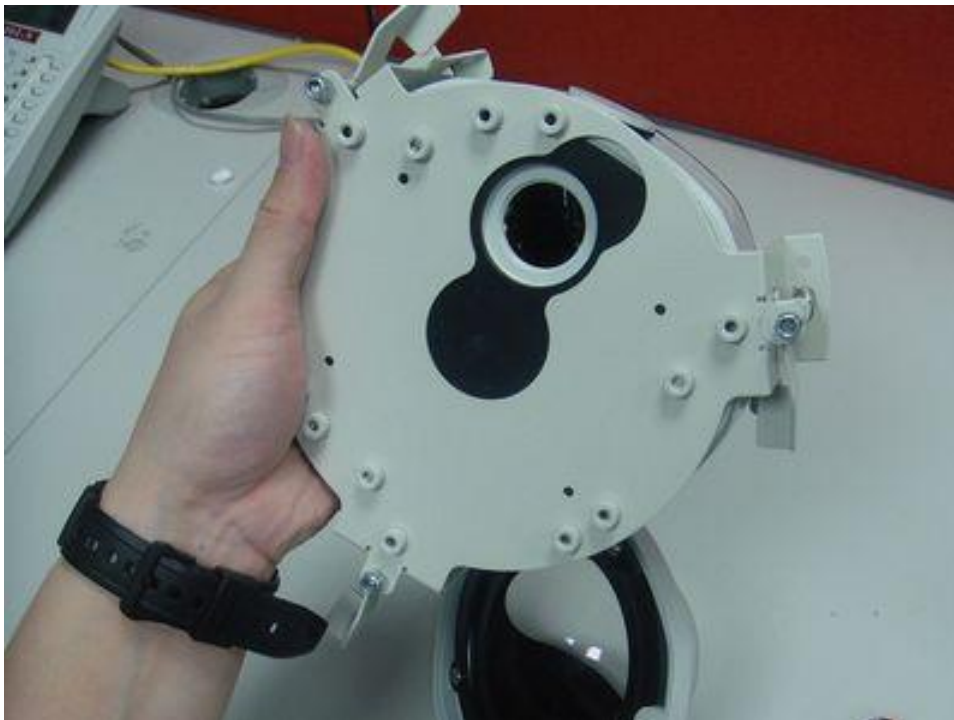
Mounting Accessory Guide

Outdoor Rugged Dome (PMAx-1003)

Step 1: insert the screws through the three holes from inside the dome. The three screws should be held in place by the rubber sheet.



Step 2: Align the conduit hole to the opening on the flush mount kit. Secure the screws into the slots on the flush mount kit. The dome base should be firmly attached to the flush mount kit by now.

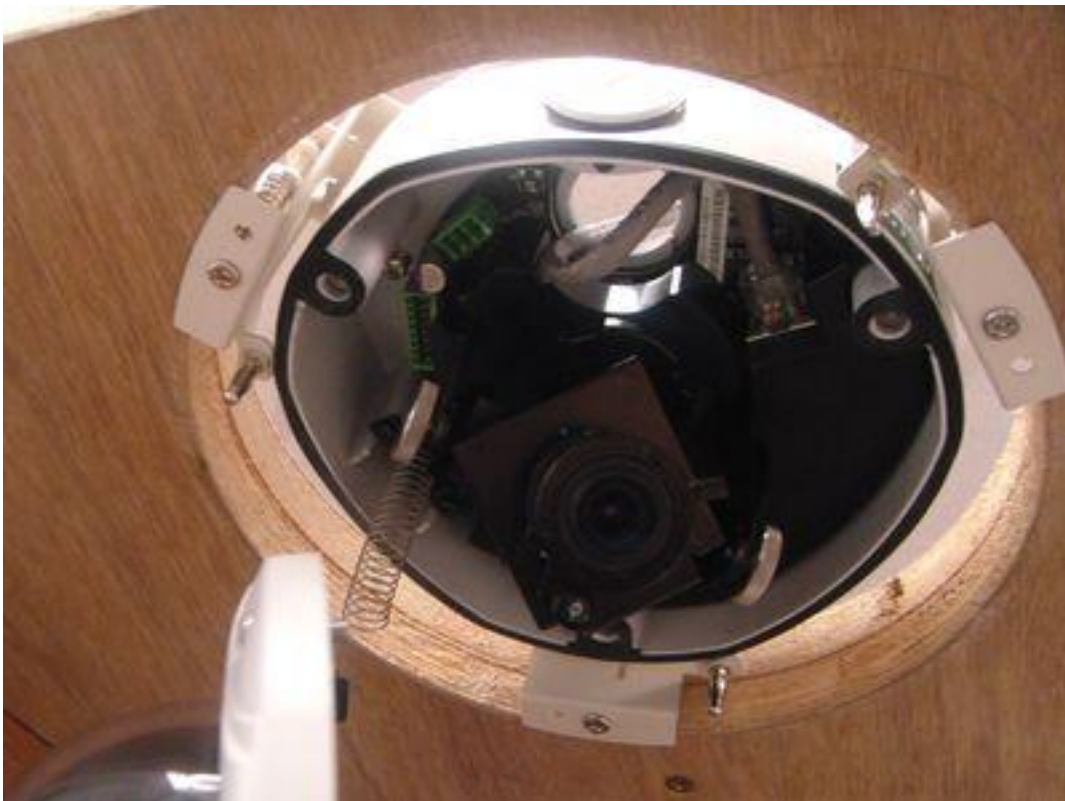


Mounting Accessory Guide

Step 3: insert the Flush mount kit and the dome into the ceiling opening. Thread the network cable through the hole on top.



Step 4: Bend the cable and connect to the camera. The dome cover should still be suspended in place by the spring.



Mounting Accessory Guide

Step 5: Secure the dome cover to the dome body.



Step 6: Push the front ring cover to finish the installation.

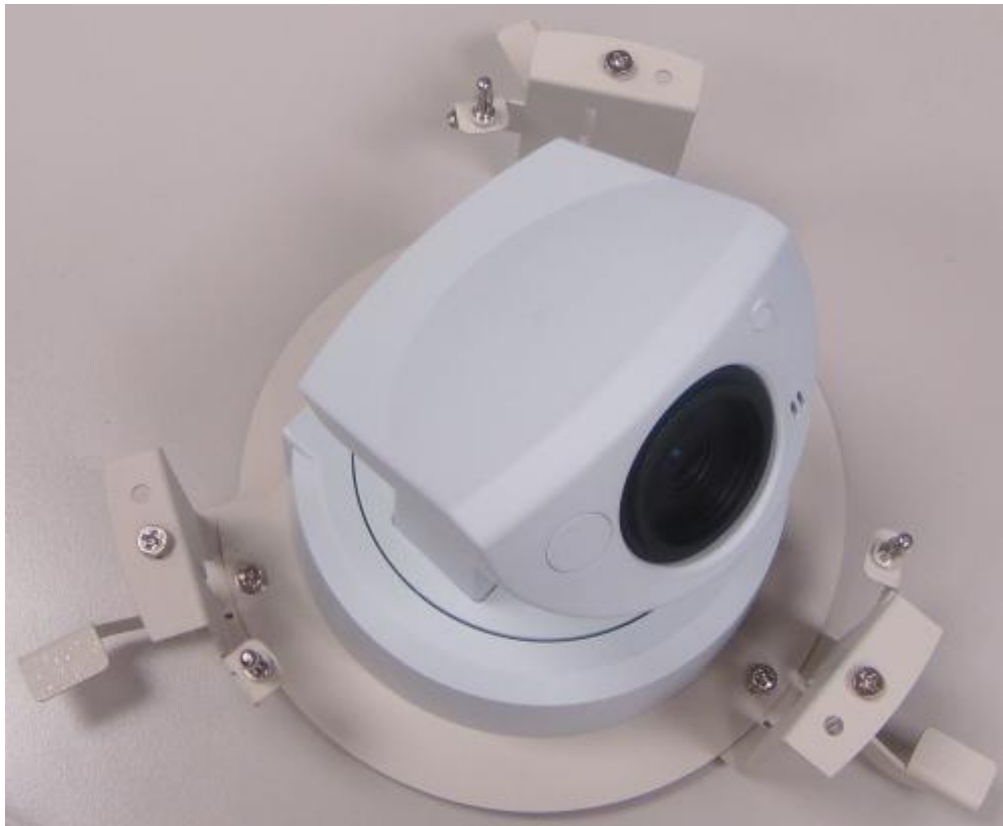


PTZ Cameras (PMAx-1001/1002)

Step 1: Attach the PTZ camera to the “cat face” shaped connection plate



Step 2: Attach the cat-face/PTZ camera assembly to the Flush Mount Kit



Mounting Accessory Guide

Step 3: Secure the flush mount kit body to the ceiling



Step 4: Thread the wire through the opening and connect to camera.

Step 5: Insert the dome-shaped front cover to complete installation.



PMAX-1001 Flush Mount Kit (Clear)

PMAX-1002 Flush Mount Kit (Smoke)



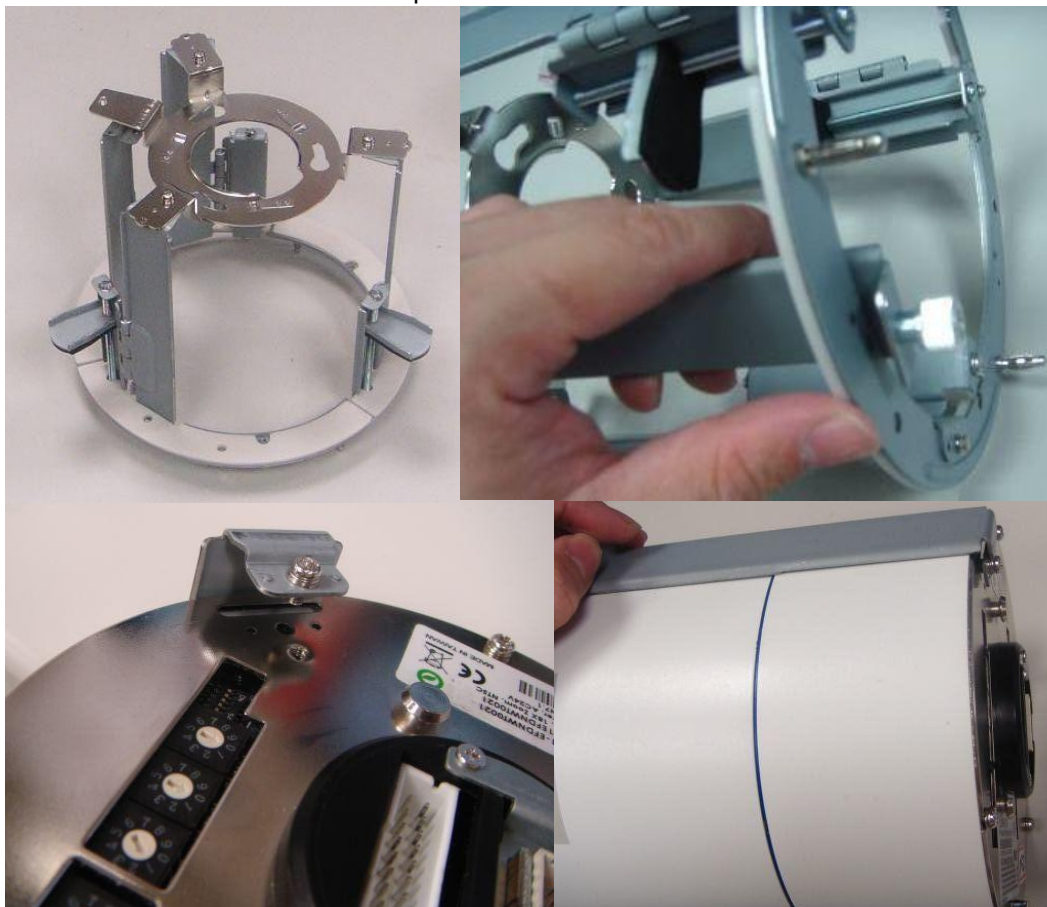
T-Bar Ceiling Mount (PMA-1007)

Here is the detailed instruction for installing CAM-6510 Indoor Speed Dome with T-bar Ceiling Mount.

Step 1: There are two clear dome covers available for Indoor Speed Domes. Use the one without winged edges.

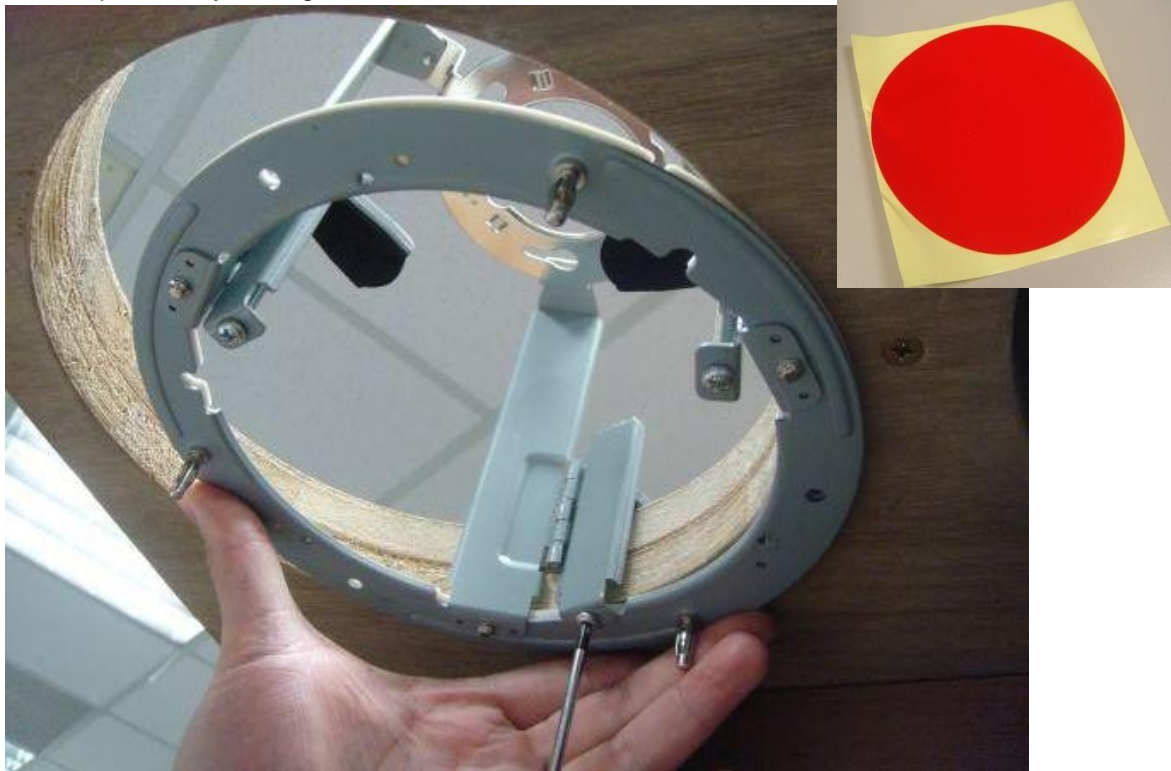


Step 2: Remove the side tab from the T-bar Mount and attach it to the side of the indoor Speed Dome



Mounting Accessory Guide

Step 3: Open a hole in the ceiling with the red drill template sticker. Insert the T-bar body into the hole and rotate the holders out to secure it on the ceiling. Adjust the side holder height and fix the position by turning the screw below.



Step 4: Connect the wiring for Indoor Speed Dome



Mounting Accessory Guide

Step 5: Insert the Speed dome upwards, place the three mushroom-shaped lockers against the slots in the Ceiling Mount and rotate clockwise into place.



Step 6: Secure the side tab by turning the screw head with your hand.



Mounting Accessory Guide

Step 7: Insert the face plate upwards to complete installation.



Junction Box

Junction Box is a versatile IP 66 waterproof space for wiring and storing key components that should be kept out of the elements. This Junction Box is constructed of Aluminum and is light weight while being very durable. There are two openings for side plate / mount attachment, as well as three groups of two conduit holes. The wall attachment plate can be shifted between two faces, or removed if the junction box is attached to Corner / Pole mount kits. The junction box can be used sideways to connect to the wall, or used as a suspension point from the ceiling.

The door of the Junction Box can be removed easily. When the door is opened at 90 degrees to the front, the door can be lifted up from its slot and removed.



Mounting Accessory Guide

Used horizontally on the wall

Step 1: Position the Junction box so that the door opens to the right. Insert the bolts to the wall, but not completely tightened.



Step 2: Slide the circle section of the slots over the bolt. Lower the junction box so that the smaller section is securely placed upon the bolts. Tighten the bolts.

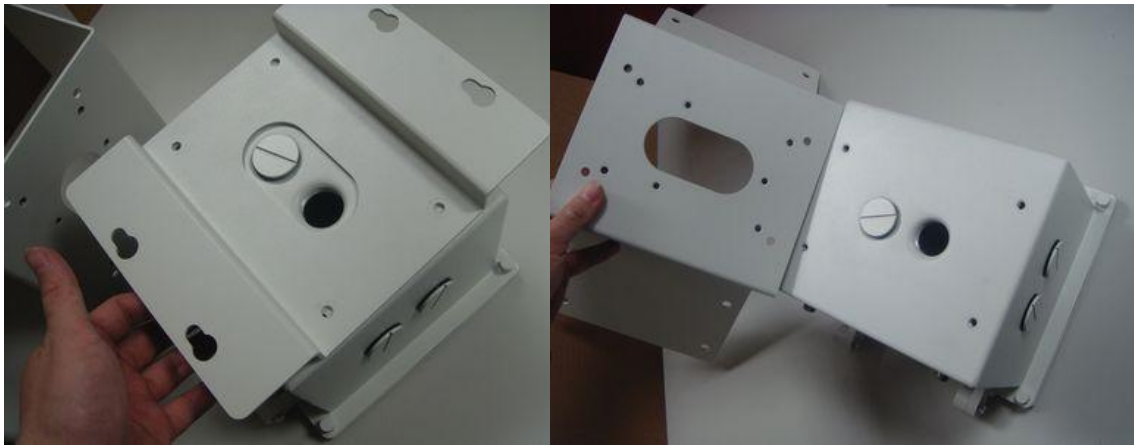


Step 3: Attach Heavy Duty Wall mount / Gooseneck to the front.



Used horizontally with Pole / Corner Mount kits

Step 1: Remove the wall attachment plate from the junction box.



Step 2: Screw the Pole / Corner mount kit to the back of the junction box



Step 3: Install the combined accessory as usual like the original Pole / Corner mount kit.



Used Vertically with Straight Tube (Pendant Mounts)

Using the Junction box in this way requires changing its default configuration. You need to remove the wall attachment plate and reattach it to the side, while the side plate will be moved to cover the opening on the door, so that the side opening that points downwards when installed will be able to connect to straight tubes. After you have reconfigured the junction box, follow these steps:

Step 1: Locate the holes on the ceiling with the drill template. Place the bolts onto the ceiling, but not fully tightened.



Step 2: Slide the circle section of the slots over the bolt. Shift the junction box so that the smaller section is securely placed upon the bolts. Tighten the bolts.



Step 3: Finish installation on the ceiling



Installing Speed Domes

CAM series Speed domes come with a different set of mount kits. The outdoor version is included in the CAM-66xx series. The indoor mount kit is sold separately. Here we show you how to connect your speed dome cameras with the new ACTi mounting accessories.

Previous Speed Dome Mounting Accessories will be discontinued at the end of Apr. 2010.

To connect Speed dome mount kits to ACTi mounting accessories, an adaptor ring is required. This ring is sold bundled with ACTi mounting accessories. It is secured to the ACTi standard size tube via two screws, and connects to CAM speed dome mount kits with one single screw.



Mounting Accessory Guide

Step 1: Install the mount onto the attached structure. Thread the cables through the mounting accessory. Here we use a Heavy Duty Wall mount attached directly to the wall as an example.



Step 2: Connect the adaptor ring onto the mounting accessory.



Mounting Accessory Guide

Step 3: Attach the mount kit onto the adaptor ring. Secure it with the single bit screw provide.

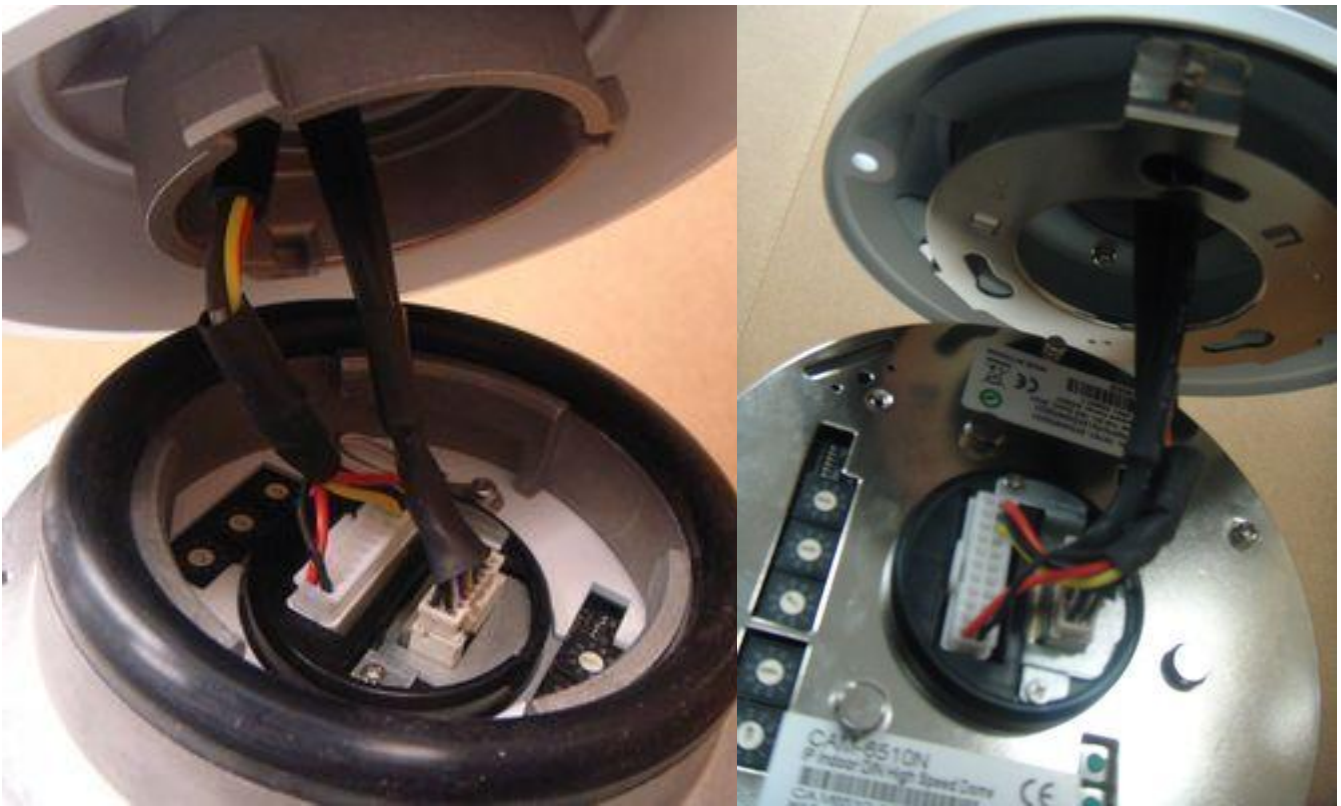


Step 4: Connect the cables to the Speed dome. Hold the speed dome in place carefully during this and the next procedure.



Mounting Accessory Guide

Step 5: The mount kit has three slots that will link with three connection points on the speed dome. Indoor and Outdoor versions have different linking mechanisms.



Step 6: Slide the speed dome upward through the slot, and rotate until it is securely fastened. Fix its position with the screw from the top of the mount kit.



Mounting Accessory Guide

Step 7: If your device requires waterproof conduits, then open the conduit hole and attach the cable gland to the mounting accessory to seal off the water.



Mounting Accessory Guide

Step 8: If you are using a junction box, you may connect the cables inside the junction box, and store them safely away from the elements. There is enough room for the power adaptor and more inside the junction box.



Sample Installations:

Outdoor Rugged Dome

Wall

L-Type Wall Mount

PMAX-0308



Mount Kit + Heavy Duty Wall Mount

PMAX-0101 + PMAX-0305



Mount Kit + Heavy Duty Wall Mount + Junction Box



PMAX-0101 + PMAX-0305 + PMAX-0700



Mount Kit + Gooseneck w/Bracket



PMAX-0101 + PMAX-0302



Mount Kit + Gooseneck w/o Bracket + Junction Box

PMAX-0101 + PMAX-0303 + PMAX-0700



Corner

Mount Kit + Heavy Duty Wall Mount + Corner Mount Kit



PMAX-0101 + PMAX-0305 + PMAX-0402



Mount Kit + Heavy Duty Wall Mount + Junction Box + Corner Mount Kit



PMAX-0101 + PMAX-0305 + PMAX-0700 + PMAX-0402



Mount Kit + Gooseneck w/o Bracket + Corner Mount Kit



PMAX-0101 + PMAX-0303 + PMAX-0402



Mount Kit + Gooseneck w/o Bracket + Junction Box + Corner Mount Kit



PMAX-0101 + PMAX-0303 + PMAX-0700 + PMAX-0402



Pole

Mount Kit + Heavy Duty Wall Mount+ Pole Mount Kit



PMAX-0101 + PMAX-0305 + PMAX-0502



Mount Kit + Heavy Duty Wall Mount+ Junction Box + Pole Mount Kit



PMAX-0101 + PMAX-0305 + PMAX-700 + PMAX-0502



Mount Kit + Gooseneck w/o Bracket + Pole Mount Kit



PMAX-0101 + PMAX-0303 + PMAX-0502



Mount Kit + Gooseneck w/o Bracket + Junction Box + Pole Mount Kit



PMAX-0101 + PMAX-0303 + PMAX-0700 + PMAX-0502



Ceiling

Mount Kit + Straight Tube w/Bracket

PMAX-0101 + PMAX-0103



Mount Kit + Straight Tube w/ Bracket + Extension Tube

PMAX-0101 + PMAX-0103 +
PMAX-0104



Mount Kit + Straight Tube w/o Bracket + Junction Box

PMAX-0101 + PMAX-0102 + PMAX-0700



Flush Mount Kit

PMAX-1003



Speed Dome

Wall

Speed Dome Mount Kit + Heavy Duty Wall Mount



Indoor Speed Dome: PMAX-0107 + PMAX-0309

Outdoor Speed Dome: PMAX-0309



Speed Dome Mount Kit + Heavy Duty Wall Mount + Junction Box



Indoor Speed Dome: PMAX-0107 + PMAX-0309 + PMAX-0700

Outdoor Speed Dome: PMAX-0309 + PMAX-0700



Speed Dome Mount Kit + Gooseneck w/Bracket



Indoor Speed Dome: PMAX-0107 + PMAX-0307

Outdoor Speed Dome: PMAX-0307



Speed Dome Mount Kit + Gooseneck w/o Bracket + Junction Box



Indoor Speed Dome: PMAX-0107 + PMAX-0306 + PMAX-0700

Outdoor Speed Dome: PMAX-0306 + PMAX-0700



Corner

Speed Dome Mount Kit + Heavy Duty Wall Mount + Corner Mount Kit



Indoor Speed Dome: PMAX-0107 + PMAX-0309 + PMAX-0402

Outdoor Speed Dome: PMAX-0309 + PMAX-0402



Speed Dome Mount Kit + Heavy Duty Wall Mount + Junction Box + Corner Mount Kit



Indoor Speed Dome: PMAX-0107 + PMAX-0309 + PMAX-0700 + PMAX-0402

Outdoor Speed Dome: PMAX-0309 + PMAX-0700 + PMAX-0402



Speed Dome Mount Kit + Gooseneck w/o Bracket + Corner Mount Kit

Indoor Speed Dome: PMAX-0107 + PMAX-0306 + PMAX-0402

Outdoor Speed Dome: PMAX-0306 + PMAX-0402



Speed Dome Mount Kit + Gooseneck w/o Bracket + Junction Box + Corner Mount Kit

Indoor Speed Dome: PMAX-0107 + PMAX-0306 + PMAX-0700 + PMAX-0402

Outdoor Speed Dome: PMAX-0306 + PMAX-0700 + PMAX-0402



Pole

Speed Dome Mount Kit + Heavy Duty Wall Mount+ Pole Mount Kit

Indoor Speed Dome: PMAX-0107 + PMAX-0309 + PMAX-0502

Outdoor Speed Dome: PMAX-0309 + PMAX-0502



Speed Dome Mount Kit + Heavy Duty Wall Mount+ Junction Box + Pole Mount Kit

Indoor Speed Dome: PMAX-0107 + PMAX-0309 + PMAX-0700 + PMAX-0502

Outdoor Speed Dome: PMAX-0309 + PMAX-0700 + PMAX-0502



Mounting Accessory Guide

Speed Dome Mount Kit + Gooseneck w/o Bracket + Pole Mount Kit

Indoor Speed Dome: PMAX-0107 + PMAX-0306 + PMAX-0502

Outdoor Speed Dome: PMAX-0306 + PMAX-0502



Speed Dome Mount Kit + Gooseneck w/o Bracket + Junction Box + Pole Mount Kit

Indoor Speed Dome: PMAX-0107 + PMAX-0306 + PMAX-0700 + PMAX-0502

Outdoor Speed Dome: PMAX-0306 + PMAX-0700 + PMAX-0502



Ceiling

Speed Dome Mount Kit + Straight Tube w/Bracket



Indoor Speed Dome: PMAX-0107 + PMAX-0109

Outdoor Speed Dome: PMAX-0109



Mount Kit + Straight Tube w/ Bracket + Extension Tube

Indoor Speed Dome:

PMAX-0107 + PMAX-0109+
PMAX-0104

Outdoor Speed Dome:

PMAX-0109+ PMAX-0104



Speed Dome Mount Kit + Straight Tube w/o Bracket + Junction Box

Indoor Speed Dome: PMAX-0107 + PMAX-0108 + PMAX-0700



Outdoor Speed Dome: PMAX-0108 + PMAX-0700



T-Bar In-Ceiling Mount

PMAX-1007



Indoor Dome

Wall

L-Type Wall Mount



PMAX-0308



Mount Kit + Heavy Duty Wall Mount



PMAX-0101 + PMA-0305



Mount Kit + Heavy Duty Wall Mount + Junction Box



PMAX-0101 + PMAX-0305 + PMAX-0700



Mount Kit + Gooseneck w/Bracket



PMAX-0101 + PMAX-0302



Mount Kit + Gooseneck w/o Bracket + Junction Box



PMAX-0101 + PMAX-0303 + PMAX-0700



Corner

Mount Kit + Heavy Duty Wall Mount + Corner Mount Kit



PMAX-0101 + PMAX-0305 + PMAX-0402



Mount Kit + Heavy Duty Wall Mount + Junction Box + Corner Mount Kit



PMAX-0101 + PMAX-0305 + PMAX-0700 + PMAX-0402



Mount Kit + Gooseneck w/o Bracket + Corner Mount Kit



PMAX-0101 + PMAX-0303 + PMAX-0402



Mount Kit + Gooseneck w/o Bracket + Junction Box + Corner Mount Kit



PMAX-0101 + PMAX-0303 + PMAX-0700 + PMAX-0402



Pole

Mount Kit + Heavy Duty Wall Mount+ Pole Mount Kit



PMAX-0101 + PMAX-0305 + PMAX-0502



Mount Kit + Heavy Duty Wall Mount+ Junction Box + Pole Mount Kit



PMAX-0101 + PMAX-0305 + PMAX-700 + PMAX-0502



Mount Kit + Gooseneck w/o Bracket + Pole Mount Kit



PMAX-0101 + PMAX-0303 + PMAX-0502



Mount Kit + Gooseneck w/o Bracket + Junction Box + Pole Mount Kit



PMAX-0101 + PMAX-0303 + PMAX-0700 + PMAX-0502



Ceiling

Mount Kit + Straight Tube w/Bracket



PMAX-0101 + PMAX-0103



Mount Kit + Straight Tube w/ Bracket + Extension Tube

PMAX-0101 + PMAX-0103 +
PMAX-0104



Mount Kit + Straight Tube w/o Bracket + Junction Box



PMAX-0101 + PMAX-0102 + PMAX-0700



Flush Mount Kit

PMAX-1006



Gang Box Converter

PMAX-0801



PTZ Cameras

Wall

L-Type Wall Mount



PMAX-0308



Mount Kit + Heavy Duty Wall Mount



PMAX-0101 + PMAX-0305



Mount Kit + Heavy Duty Wall Mount + Junction Box



PMAX-0101 + PMAX-0305 + PMAX-0700



Mount Kit + Gooseneck w/Bracket



PMAX-0101 + PMAX-0302



Mount Kit + Gooseneck w/o Bracket + Junction Box



PMAX-0101 + PMAX-0303 + PMAX-0700



Corner

Mount Kit + Heavy Duty Wall Mount + Corner Mount Kit



PMAX-0101 + PMAX-0305 + PMAX-0402



Mount Kit + Heavy Duty Wall Mount + Junction Box + Corner Mount Kit



PMAX-0101 + PMAX-0305 + PMAX-0700 + PMAX-0402



Mount Kit + Gooseneck w/o Bracket + Corner Mount Kit

PMAX-0101 + PMAX-0303 + PMAX-0402



Mount Kit + Gooseneck w/o Bracket + Junction Box + Corner Mount Kit

PMAX-0101 + PMAX-0303 + PMAX-0700 + PMAX-0402



Pole

Mount Kit + Heavy Duty Wall Mount+ Pole Mount Kit



PMAX-0101 + PMAX-0305 + PMAX-0502



Mount Kit + Heavy Duty Wall Mount+ Junction Box + Pole Mount Kit



PMAX-0101 + PMAX-0305 + PMAX-700 + PMAX-0502



Mount Kit + Gooseneck w/o Bracket + Pole Mount Kit



PMAX-0101 + PMAX-0303 + PMAX-0502



Mount Kit + Gooseneck w/o Bracket + Junction Box + Pole Mount Kit



PMAX-0101 + PMAX-0303 + PMAX-0700 + PMAX-0502



Ceiling

Mount Kit + Straight Tube w/Bracket

PMAX-0101 + PMA-0103



Mount Kit + Straight Tube w/ Bracket + Extension Tube

PMAX-0101 + PMA-0103 +
PMA-0104



Mount Kit + Straight Tube w/o Bracket + Junction Box

PMAX-0101 + PMA-0102 + PMA-0700



Flush Mount Kit Transparent / Smoke

PMAX-1001 / 1002

