

ACTi NVR v3.0

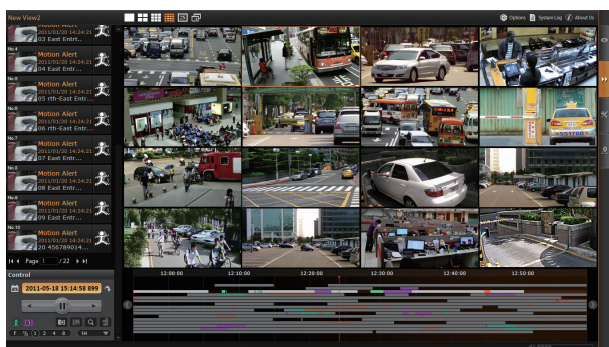
ACTi Network Video Recorder



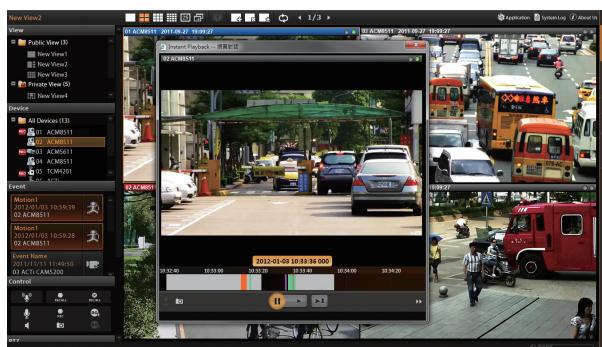
- Manage up to 100 cameras or video encoders
- Recording up to 100 Channels
- Live view local up to 64 Channels, remote up to 64 Channels
- Synchronized playback local up to 64 Channels
- Export video with RAW and AVI formats
- Event trigger, response and notification
- Mobile Client, Web Client, Workstation
- Location-based management with eMap
- 16-channel free license included
- Non-ACTi camera support via licensed camera Device Pack

SPECIAL FEATURES

Up to 64 channels synchronized playback

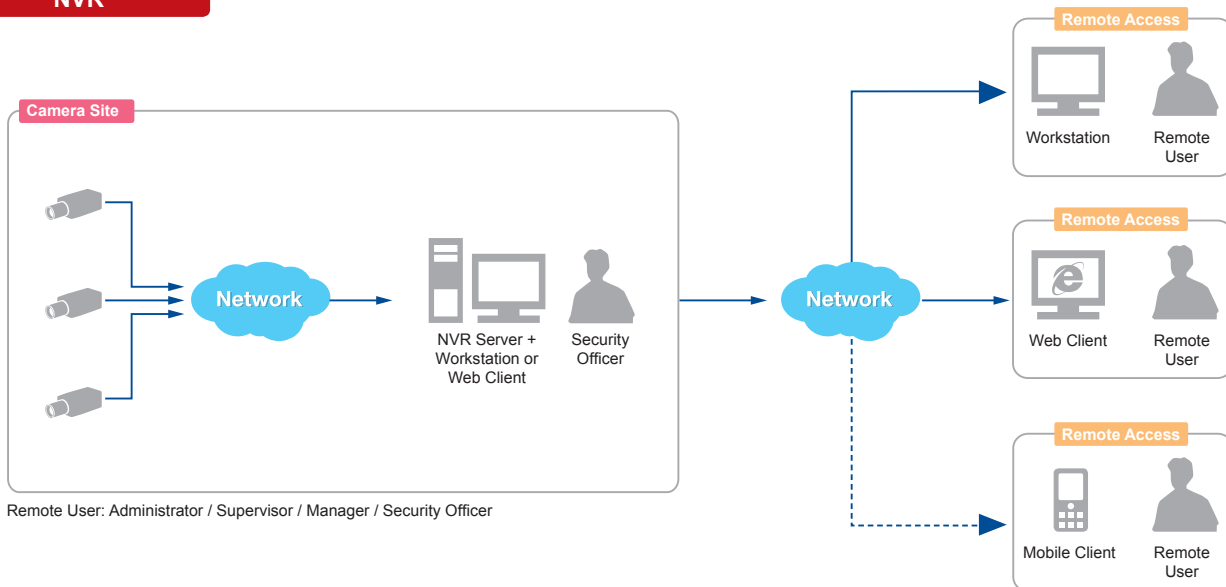


Instant playback in live view window



SOLUTION ARCHITECTURE

NVR



ACTi NVR v3.0

PRODUCT SPECIFICATION

NVR 3.0

• General

Full Name	ACTi Network Video Recorder v3.0
Maximum Number of Clients	1 local, 5 remote (concurrent)
Maximum Number of Cameras	100
Free License	16 channels
Compression	H.264, MPEG-4, MJPEG

• Live View

Display Layout Mode	1, 4, 5, 6, 8, 9, 10, 12, 16, 18, 24, 25, 35, 36, 48, 49, 64
View Manager	An interface to define display layouts and the pre-set cameras within layout in the public or private view
View Patrol	Automatic switch between different views or devices
View Panel	Contains the list of pre-defined views for quick launch
Device Panel	Drag and drop video source from device panel into display layout; display camera status
Digital Zoom	Zoom in/out digitally by mouse scroll wheel or by zoom control buttons
Manual Recording / Snapshot	Instant recording upon mouse click / Instant snapshot upon mouse click or hot key
Event Panel	Display event status upon alarm or upon connection loss or recovery between server and client or when the allocated disk space is full
Two-way Audio	Audio sound from and to all the audio supported devices; audio broadcast to multiple devices at the same time
Dual Stream Management	Live view of stream 1 or stream 2 of dual stream devices
Instant Playback	Instant playback in live view window

• e-Map

Layout	Area maps with camera icons, small live view windows; hyperlinked
Setup	e-Map image upload; camera positioning; vision angle and pointed direction of camera; view positioning; source positioning
PTZ Mode	Mouse PTZ mode to control e-Map video streams

• PTZ

Control	Pan, tilt and zoom controls; speed control; both buttons and overlay controls
Preset Points and Tours	Create preset points; create auto tours between preset points
Number of Preset Points	32
Joystick	USB based joystick supported
Support Protocol	Auto-detect camera's PTZ protocol. Available protocols: ACTi, Pelco-P, Pelco-D, Dynacolor, Visca

• Recording

Scheduled Recording	Record video with user defined schedule
Event Recording	Record video when the alarm event is triggered, including the pre-event buffered video clip
Speed Up	Different recording frame rate settings for non-event and triggered event
Manual Recording	Instant recording upon mouse click
Pre-Event Recording	User-defined time period to record before event occurs. The maximum buffer is 5 seconds
Post-Event Recording	User-defined time period to record after event occurs. The maximum buffer is 300 seconds
Dual Stream Management	Recording of stream 1 or stream 2 of dual stream devices

• Search & Playback

Recording Search	Search video recordings by time, event, channel and listed as clickable thumbnails for full-size view and snapshot download
Playback Control	Continuous forward and backward playback with speeds 1x/2x/4x/8x or frame-by-frame; pause; stop
Synchronized Playback	64 channels
Manual Snapshot	Instant snapshot from playback upon mouse click
Digital Zoom	Zoom in/out digitally by PIP (Picture-in-Picture)
Video Export	Export video clips in AVI or RAW format; text overlay supported

• Event Management

Event Trigger	Video motion detection; Passive IR sensor; External device through digital input; Video loss and recovery; Network loss and recovery; Server loss and recovery; Disk full; Disk not found
Event Response	Record video; Pop-up window with live video; Switch to hotspot window; Play beep sound; Activate external device through digital output; Upload snapshot to FTP server; Execute system command to activate other programs; E-mail notification with snapshots; Command a PTZ device to go to a preset point
Manual Event	Manually activate external devices through digital output via live view monitor
Event Handling	Define the schedule of event manager

• System

Permission Control	Unlimited number of users, Active Directory, Customizable permissions for user groups
Language	Multi-language support
Language Import/Export	Possibility to import or export language packs for convenient local language management
Customizable User Interface	Define the layout of user interface for live view and playback
Quick Setup	Configure basic settings of NVR

• Remote Access

PC Client Program	User interface program (Workstation) with live view, PTZ, playback, e-Map, event management, setup
PC Web Browser	Microsoft Internet Explorer with live view, PTZ, playback, e-Map, event management, setup
Mobile Client Program	Mobile device application (Active Mobile Client) supports live view, PTZ control, event or time based search and playback Supported devices: iPhone, iPad, iTouch and Android device

• System Requirements*

Display Mode	Live Layout	Minimum	Recommended
Server PC with Local Client	1-16	Intel Core 2 Quad 2.4 GHz, 4GB RAM	Intel i5 2.4 GHz, 4GB RAM
	17-64	Intel i5 2.4 GHz, 4GB RAM	Intel i7-920 2.67 GHz, 4GB RAM
Server PC without Local Client	0	Intel Core 2 Quad 2.4 GHz, 4GB RAM	Intel i5 2.4 GHz, 4GB RAM
	1-16	Intel Core 2 Quad 2.4 GHz, 4GB RAM	Intel i5 2.4 GHz, 4GB RAM
Remote Client PC	17-64	Intel i5 2.4 GHz, 4GB RAM	Intel i7-920 2.67 GHz, 4GB RAM

PC Operating System	Windows 7, Windows 8, Windows Server 2012
PC Web Browser	Internet Explorer 8, Internet Explorer 9, Internet Explorer 10

• Integration

Unified Solution	Fully compatible with ACTi cameras, encoders and CMS 2.0
Open Platform Solution	Support ONVIF compliant devices
ISV CMS Integration	Software Development Kit (SDK) available

* These specifications are based on following camera settings:

Single stream mode: 1280x1024, 3Mbps, 18fps, MPEG-4
Dual stream mode: Stream 1 - 1280x1024, 3Mbps, 18fps, H.264 / Stream 2 - 640x480, High Quality, 18fps, MJPEG
For more details about system requirements, please refer to Project Planner on www.acti.com

* All specifications are subject to change without notice.

* All brand names and registered trademarks are the property of their respective owners.

www.acti.com

