

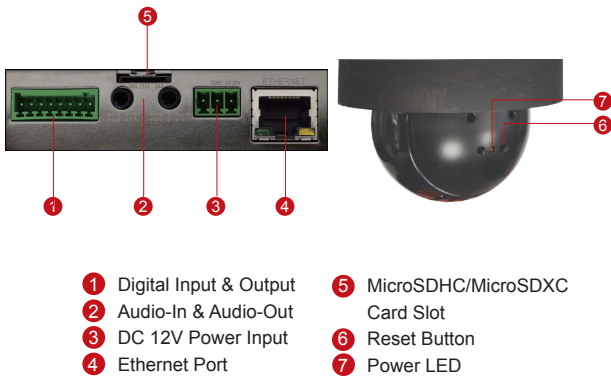
I91

1MP Indoor PTZ with D/N, Extreme WDR, SLLS, 30x Zoom Lens

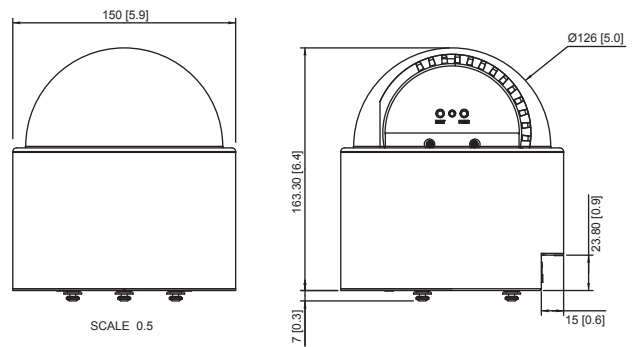


- 1 Megapixel with 720p
- Day & Night with Superior Low Light Sensitivity
- 30x Zoom Lens with f4.3-129mm/ F1.6-5.0, DC Iris, Auto Focus
- Extreme WDR (107 dB)
- 30 fps at 1280 x 720
- Pan & Tilt
- Vandal Resistant (IK09)

PHOTO INDICATION



DIMENSION DIAGRAM



Unit: mm [inch]

ACCESSORY OPTIONS

Dome Cover

PDCX-1105



5.28-inch, smoke, non-vandal proof

High PoE Injector

PPOE-0100



High PoE Injector, IEEE 802.3at Power over Ethernet
3 different connectors included

Popular Mounting Solutions

Surface

Bundled surface mount



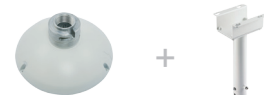
Wall

PMAX-0311



Pendant

PMAX-0110
PMAX-0103



Flush

PMAX-1010



* For more mounting solutions, please refer to Project Planner on www.acti.com

PRODUCT SPECIFICATION

I91

• Device

| | |
|--------------------------------|--|
| Product Type | Indoor PTZ Camera |
| Image Sensor | Progressive Scan CMOS |
| Sensor Size | 1/2.8" |
| Day / Night | Yes |
| Superior Low Light Sensitivity | Yes |
| Minimum Illumination | Color: 0.1 lux at F1.6 (30 IRE, 2400°K); B/W: 0.05 lux at F1.6 (30 IRE, 2400°K) |
| Color to B/W switch | ISP based switch, configurable |
| Mechanical IR Cut Filter | Yes |
| IR Sensitivity Range | 700 -1100nm |
| IR LED | No |
| Electronic Shutter | 1/13 ~ 1/2,000 sec (50Hz); 1/15 ~ 1/2,000 sec (60Hz) (manual mode); 1/13 ~ 1/10,000 sec (50Hz); 1/15 ~ 1/10,000 sec (60Hz) (auto model) |

• Lens

| | |
|--------------------------|----------------------------------|
| Focal Length | Zoom, f4.3 - 129 mm / F1.6 - 5.0 |
| Zoom Ratio | 30x optical |
| Zoom Speed | 2.87 sec (1x to 30x) |
| Iris | DC iris |
| Focus | Auto focus |
| Horizontal Viewing Angle | 66.4° - 2.68° |

• PTZ

| | |
|-------------------------|--|
| Manual Panning Speed | 0.5° - 90°/s |
| Manual Tilting Speed | 0.5° - 90°/s |
| Preset Panning Speed | 0.5° - 450°/s |
| Preset Tilting Speed | 0.5° - 450°/s |
| Panning Range | 0° - 360° (with Auto-flip) |
| Tilting Range | 0° - 180° |
| Control | Remote manual control; 256 preset points; 10 preset tours; Auto scan |
| Preset Panning Accuracy | 0.265° |
| Preset Tilting Accuracy | 0.265° |
| Absolute Position | Yes |
| Protocol | ACTi URL command, Sony VISCA, Pelco D, Pelco P |

• Video

| | |
|--------------------------------|--|
| Compression | H.264, MJPEG |
| Max. Frame Rate vs. Resolution | 30 fps at 1280 x 720; 30 fps at 640 x 480; 15 fps at 320 x 240 |
| Multi-Streaming | Simultaneous dual streams based on two configurations |
| Bit Rate | 28 Kbps - 6 Mbps (per stream) |
| Bit Rate Mode | Constant, Variable |
| Image Enhancement | Extreme WDR (107 dB); White balance: automatic, hold and manual; Brightness; Contrast; Sharpness; Automatic gain control; 2D+3D digital noise reduction; Flickerless; Defogging; Advanced image stabilizer |
| Privacy Mask | 4 configurable regions |
| Text Overlay | User defined text on video |
| Image Orientation | Image flip and mirror |

• Audio

| | |
|-------------|--|
| Compression | 8 kHz, Mono, PCM, 16 bit encoding; G.711 |
| Audio-In | 3.5mm Phone jack |
| Audio-Out | 3.5mm Phone jack |

• Network

| | |
|--------------------|--|
| Protocol & Service | TCP, UDP, HTTP, HTTPS, DHCP, PPPoE, RTP, RTSP, IPv6, DNS, DDNS, NTP, ICMP, ARP, IGMP, SMTP, FTP, UPnP, SNMP, Bonjour, Sony VISCA, Pelco D, Pelco P |
| Ethernet Port | 1, Ethernet (10/100Base-T), RJ-45 connector |
| Security | IP address filtering; HTTPS encryption; Password protected user levels; Anonymous login; IEEE 802.1X network access control |

• Alarm

| | |
|----------------|---|
| Alarm Trigger | Video motion detection (3 regions); External device through digital input |
| Alarm Response | Notify control center; Go to PTZ preset point or preset tour; Change camera settings; Command other devices; E-mail notification with snapshots; Save video or snapshot to local storage; Upload video, Snapshot to FTP server; Activate external device through digital output |

• Interface

| | |
|----------------|--|
| Digital Input | 2, Terminal block |
| Digital Output | 2, Terminal block |
| Local Storage | MicroSDHC/MicroSDXC memory card slot (card not included) |

• General

| | |
|----------------------------|--|
| Power Source / Consumption | High PoE (IEEE802.3at) / 12.94 W DC 12V / 11.22 W |
| Weight | 1546 g (3.41 lb) |
| Dimensions (Φ x H) | 150mm x 163.3 mm (5.9" x 6.4") |
| Bundled Accessories | Surface mount , Power adapter |
| Environmental Casing | Vandal resistant (IK09); Transparent dome cover |
| Mount Type | Surface, Flush, Pendant, Wall, Corner, Pole |
| Starting Temperature | -10°C ~ 50°C (14°F ~ 122°F) |
| Operating Temperature | -10°C ~ 50°C (14°F ~ 122°F) |
| Operating Humidity | 10% ~ 85% RH |
| Approvals | Camera: CE (EN 55022 Class B, EN 55024), FCC (Part15 Subpart B Class B), IK09 Adapter: CE, FCC, UL, PSE, Efficiency Level V |

• Integration

| | |
|-------------------------|--|
| Unified Solution | Fully compatible with ACTi software |
| ISV Integration | Software Development Kit (SDK) available; ONVIF Compliant |
| Firmware Access Browser | Microsoft Internet Explorer 8.0 or newer (full functionality); Other browsers with QuickTime installed (partial functionality) |

* All specifications are subject to change without notice.

* All brand names and registered trademarks are the property of their respective owners.

www.acti.com

