



1-channel MPEG-4 Video Decoder

ACD-3100

Ver. 090330

Quick Installation Guide



www.acti.com

1

Getting Started

1.1 PACKAGE CONTENTS

ACD-3100



Warranty Card



Product CD



Terminal Blocks & Screws

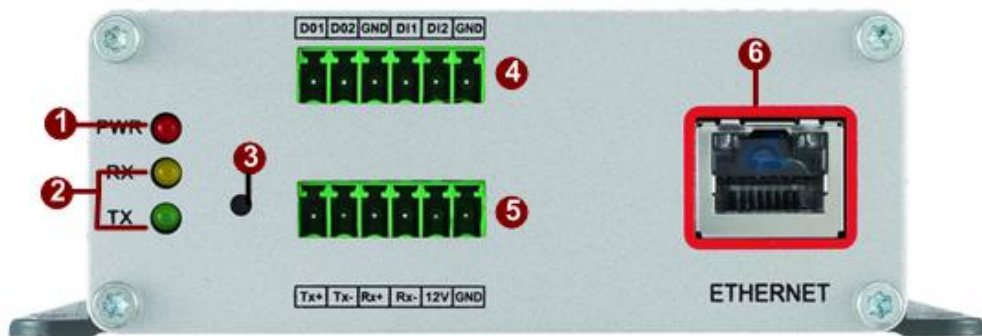


Power Adaptor (Option)



1.2 PHYSICAL DESCRIPTION

Read the following information to familiarize yourself with the video Decoder, and make particular notes of where the connectors and LEDs are located.



1. Action LED Indicator

The LED will light up after IP device has successfully completed the boot process.

2. Serial Port LED Indicator

LEDs indicating when serial port is active.

3. Reset Button

Step 1: Switch off IP device by disconnecting the power cable

Step 2: Using a suitable pointed object, press and continue to hold the Reset Button depressed. While continuing to hold the reset button depressed, reconnect the power cable.

Step 3: Keep holding the reset button depressed around 6 seconds, release the reset button. The unit will start up with factory default settings.

4. Terminal Blocks Pin 1~6

The IP device supports two alarm input and two alarm output. DI: Logic Level 0: 0~0.4V; Logic Level 1: 3.3~30V DO: Logic Level 0: 0.1~0.6V; Logic Level1: 2.4~5V

Please find Support package” TS-00045” for details.



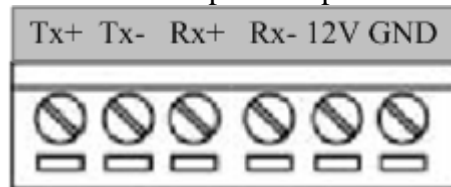
PIN	NAME	DESCRIPTION
1	DO1	Digital Output 1
2	DO2	Digital Output 2

3	GND	Ground Pin
4	DI1	Digital Input 1
5	DI2	Digital Input 2
6	GND	Ground Pin

5. Terminal Blocks Pin 7~12

Pin 7~10: RS232/422/485. Default mode is RS-485

Pin 11~12: DC 12V power input



PIN	NAME	DESCRIPTION		
		RS-485	RS-422	RS-232
7	Tx+	D+	Tx+	Tx
8	Tx-	D-	Tx-	
9	Rx+		Rx+	Rx
10	Rx-		Rx-	
11	12V	Power Input (DC +12V)		
12	GND	Ground Pin of Power Input & RS-232		

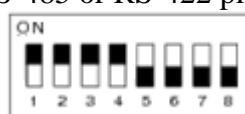
6. Ethernet Port

The IP device connects to the Ethernet via a standard RJ45 connector. Supporting NWAY, this IP device can auto detect the speed of local network segment (10Base-T/100Base-TX Ethernet).



7. Dip Switch for Serial Port

RS-485 or RS-422 pin define (default is RS-485)



RS-232 pin define



8. **Audio Input / Output**

The IP device supports one audio input and output with earphone jack

9. **Y/C Output**

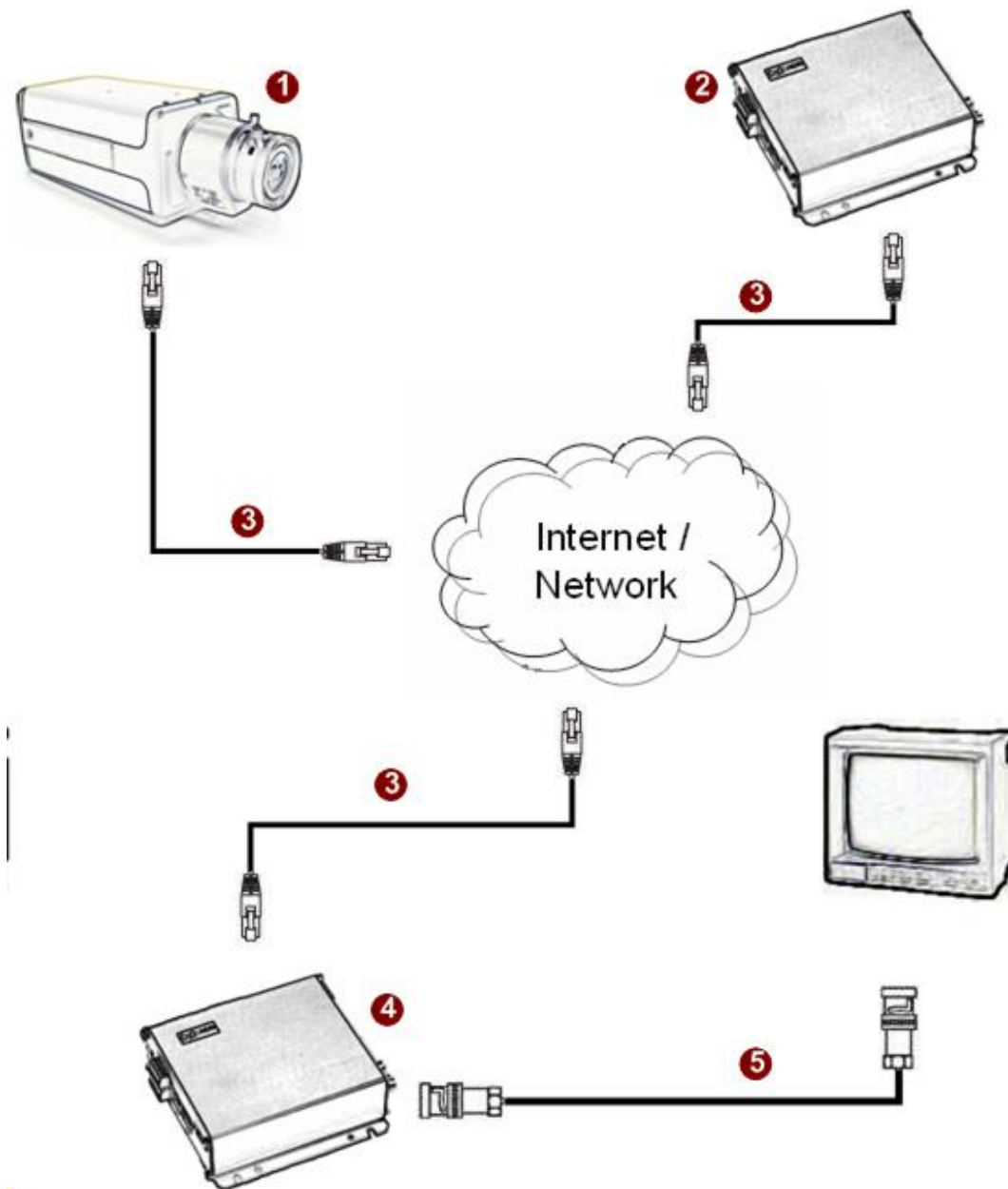
Analog Video Output of Y/C Signal with S-Video Connector

10. **Composite Output**

Analog Video Output of Composite Signal with BNC Connector

1.3 CONNECT NECESSARY CABLES

Follow the procedures below to connect the video Decoder to the respective apparatuses.



1. The IP camera or other encoding devices as a video source
2. The video server or other encoding devices as a video source
3. Connect video server / IP camera and video Decoder to an Ethernet hub (RJ45 connectors)
4. Video Decoder is the receiver side
5. Connect a coaxial cable to TV monitor and display the video which encoded and transferred from video server / IP camera

2

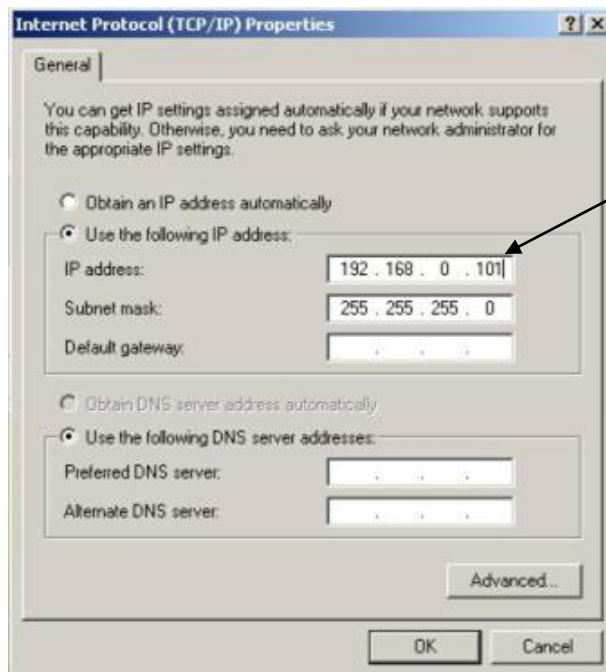
Quick Tour

This section guides you with a quick tour on our video Decoder.

2.1 Configure the video Decoder

2.1.1 Make sure network environment

Default IP of video Decoder is 192.168.0.200. Please make sure the video Decoder and your PC are on the same network segment before running the installation.



Please set the settings as below.

IP address: 192.168. 0.xxx
Subnet mask: 255.255.255. 0

(NOTE: xxx should be a number from 1 to 254, but 200 is excepted.)

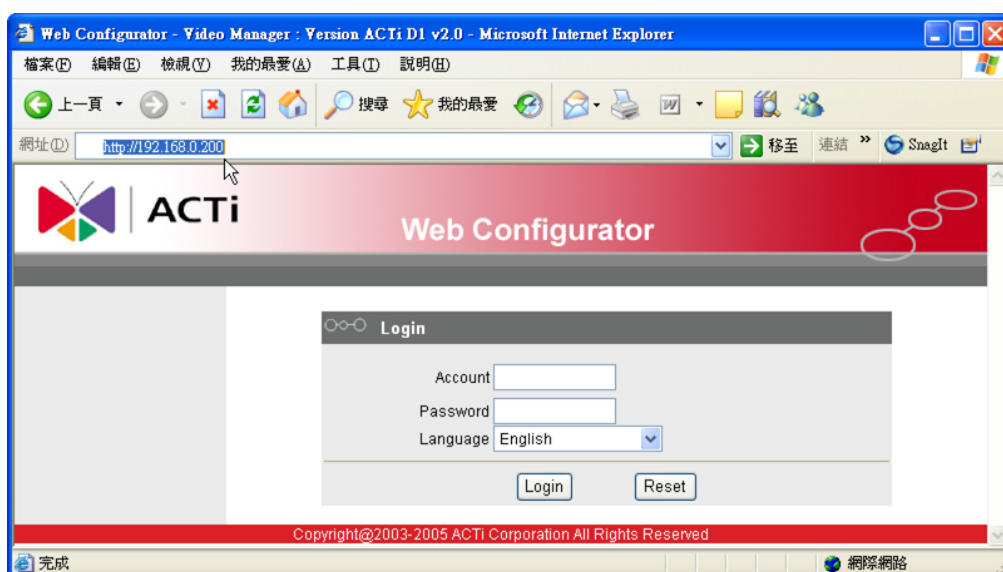
2.1.2 Open Internet Explorer with IP address

This section describes how to configure the video Decoder. The product administrator has unlimited access to all setup windows and normal users can only watch the live images. The video Decoder is configured under a standard browser (Microsoft Internet Explorer 6.0 or above).

Follow the procedures below to configure the video Decoder.

- **STEP1:** Open a browser
- **STEP2:** Enter the IP address of the video Decoder.

The default IP address is “192.168.0.200”



- **STEP3:** Enter the Account name (factory default: Admin) and the Password (factory default: 123456).
- **STEP4:** Select the language of the video Decoder user interface. You can select from English, Traditional Chinese, Simplified Chinese, Japanese and Spanish.
- **STEP5:** Click the **Login** button to login or click the **Reset** button to re-enter again.

2.1.3 Set a new IP address

The screenshot displays the ACTi Web Configurator interface. On the left is a navigation menu with options: >> Host Setting, >> WAN Setting, >> Connection Setting, >> User Account, >> Port Setting, >> System Info, >> Firmware, >> Factory Default, >> Save Reboot, and >> Logout. The main content area is titled 'Web Configurator' and contains three configuration sections:

- WAN Setting ***: Includes radio buttons for 'Dynamic IP Address' and 'Static IP Address'. The 'Static IP Address' section has input fields for IP Address (192.168.0.200), Subnet Mask (255.255.255.0), and ISP Gateway (192.168.0.254). Below this is the 'PPPoE' section with 'User Name' (86455537@hinet.net) and 'Password' (masked with dots). 'Apply' and 'Reset' buttons are at the bottom.
- DNS Server Setting**: Includes input fields for 'Primary DNS Server' (168.95.1.1) and 'Secondary DNS Server' (168.95.192.1). 'Apply' and 'Reset' buttons are at the bottom.
- DDNS Server Setting**: Includes a 'DDNS Type' dropdown (Enable), a 'Service ISP' dropdown (members.dyndns.org), 'Host Name' (actise.dyndns.org), 'User Name' (acti-se), and 'Password' (masked with dots). 'Apply' and 'Reset' buttons are at the bottom.

Copyright@2003-2007 ACTi Corporation All Right Reserved

***IP Address** : The IP address of the LAN interface. The default IP address is 192.168.0.200.

***Subnet Mask** : The subnet mask of the LAN interface. The default subnet mask is 255.255.255.0

***Click**  button

2.1.4 Select a video server / IP camera

This section tells you how to setup video server or IP camera's video and streaming settings.

The screenshot shows the ACTi Web Configurator interface. The top header is red with the ACTi logo and the text 'Web Configurator'. On the left, there is a navigation menu with the following items: >> Host Setting, >> WAN Setting, >> Connection Setting (highlighted), >> User Account, >> Port Setting, >> System Info, >> Firmware, >> Factory Default, >> Save Reboot, and >> Logout. The main content area is titled 'Connection Setting' and contains the following fields and options:

- Source Type: Video Server (dropdown)
- Connect Type: Unicast (dropdown)
- Variable FPS: Use Server's Setting (dropdown)
- TCP Connect IP: 192.168.0.100 (text input)
- Multicast Connect IP: 228.5.6.1 (text input) with a range note (224.3.1.0 ~ 239.255.255.255)
- Connect User Name: Admin (text input)
- Connect Password: 123456 (text input)
- Enable Audio In: Off (dropdown)
- Enable Control Data: Off (dropdown)
- Stream Port: 6002 (text input)
- Control Port: 6001 (text input)
- Multicast Port: 5000 (text input)
- RTP Port: 7070 (text input)
- HTTP Port: 80 (text input)

At the bottom of the configuration area, there are two buttons: 'Apply' and 'Reset'. Below the configuration area, a red footer bar contains the text: Copyright@2003-2007 ACTi Corporation All Right Reserved.

***Source Type** : Select your video source is Video Server or Quad Server.

***Connect Type** : Select Multicast or TCP mode for connecting to a video server/IP camera.

***Variable FPS** : Select variable FPS.

***TCP Connect IP** : Set IP address of a video server / IP camera while Connect Type is TCP Streaming.

***Multicast Connect IP**: Set IP address of video server / IP camera while Connect Type is Multicast streaming.

***Connect User Name** : Set Login Name of video server / IP camera.

***Connect Password** : Set Password of video server / IP camera.

***Click**  button



NOTE: Check with your MIS department, if video Decoder and video server/IP camera are setting in different VLANs, please connect to WAN

port.

2.1.5 Click **Save Reboot** to restore all settings and please wait about 30 seconds for system reboot.